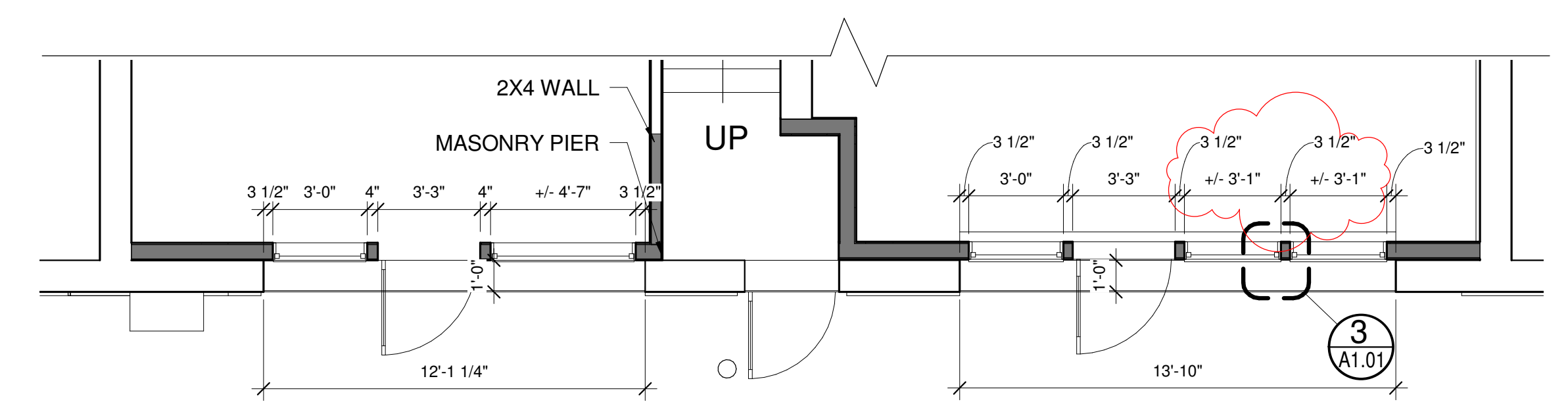
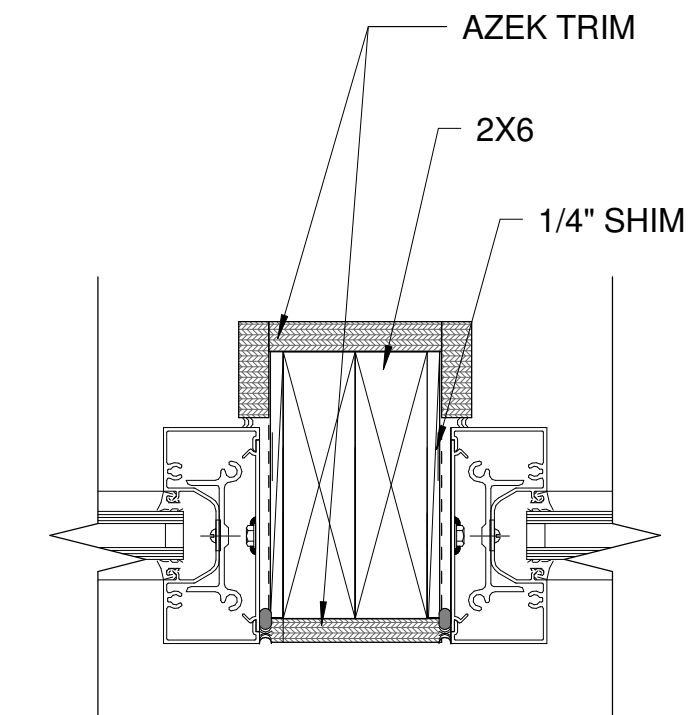


NOTES:  
 -WINDOWS TO BE REPLACED ON ALL UPPER FLOORS W/ UNIVERSAL SERIES 400 HISTORIC ALUMINUM WINDOWS. BLACK FRAME AND MULLIONS. MUNTINS TO BE 5/8" AND HAVE SIMULATED DIVIDED LIGHT (INT, EXT & SPACER)  
 -REPAIR ENTRANCE PADS

**2 | WHARF STREET - ELEVATION**  
 1/4" = 1'-0"



**1 | WHARF STREET - PLAN**  
 1/4" = 1'-0"



**3 | STOREFRONT JAMB**  
 3" = 1'-0"

Prepared For:	Owner
Consultant:	ARCHETYPE Architects 48 Union Wharf Portland, Maine 04101 (207) 772-6022 Fax (207) 772-4056
Project:	10 Exchange Street Portland, Maine
Revisions:	1   2015-06-30 Revision 1
Date:	2-2-2015
Scale:	As indicated
<b>WHARF STREET PLAN &amp; ELEVATION</b>	
<b>A1.01</b>	