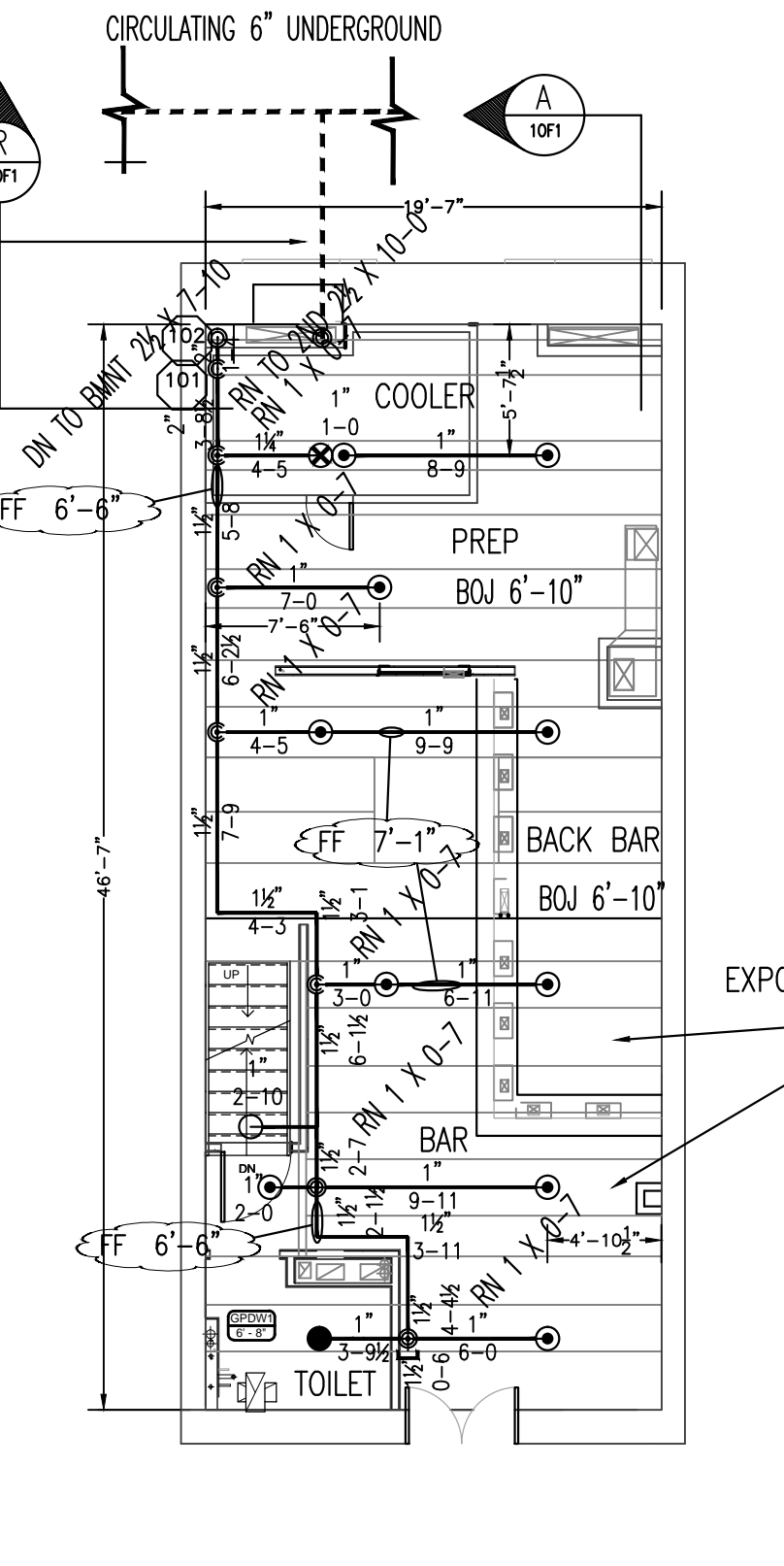


FIRE SPRINKLER PLAN - BASEMENT

SCALE: 1/8"=1'
 AREA PROTECTED: 814 SQ.FT.
 FINISH FLOOR ELEVATION: 92'-4"
 COLOR CODE:

Sprinkler Head Schedule				
Symbol	Count	Thread	K-Factor	Description
○	11	1/2"	5.6	TYCO TYRIB BRASS UPRIGHT 200 OR TY333
11 = Total Number of Heads this floor				

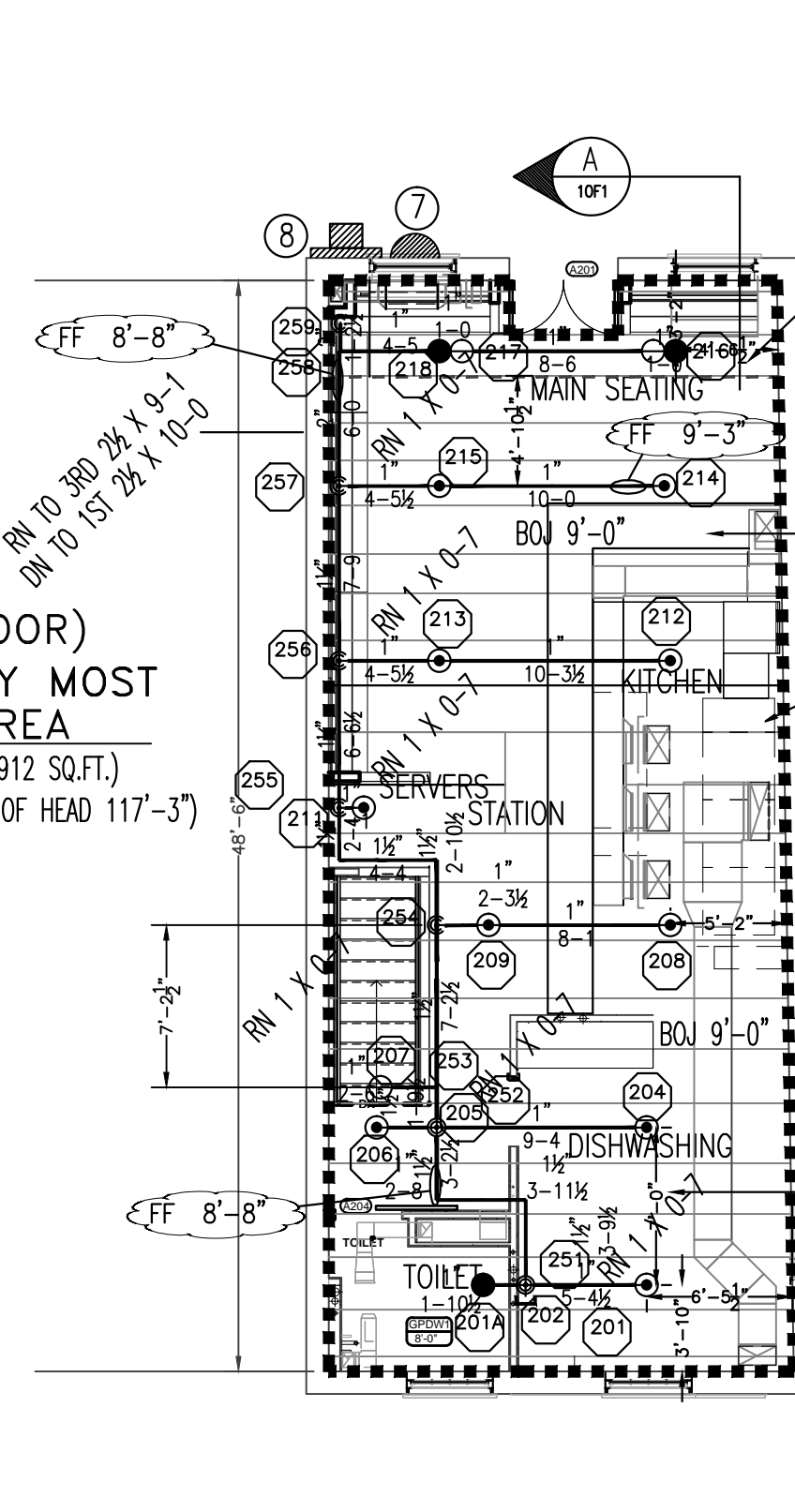


FIRE SPRINKLER PLAN - FIRST FLOOR

SCALE: 1/8"=1'
 AREA PROTECTED: 912 SQ.FT.
 FINISH FLOOR ELEVATION: 100'-0"
 COLOR CODE:

Sprinkler Head Schedule				
Symbol	Count	Thread	K-Factor	Description
○	10	1/2"	5.6	TYCO TYRIB 200 OR BRASS PENDENT TY333
●	1	1/2"	5.6	TYCO DG-1 TY3235 200 OR CHROME DRY PENDENT on Drop
○	1	1/2"	5.6	TYRIB BRASS UPRIGHT 200 OR TY333 on Line
●	1	1/2"	5.6	TYCO RFI 200 OR WHI CONCEALER TY3331 on Drop
13 = Total Number of Heads this floor				

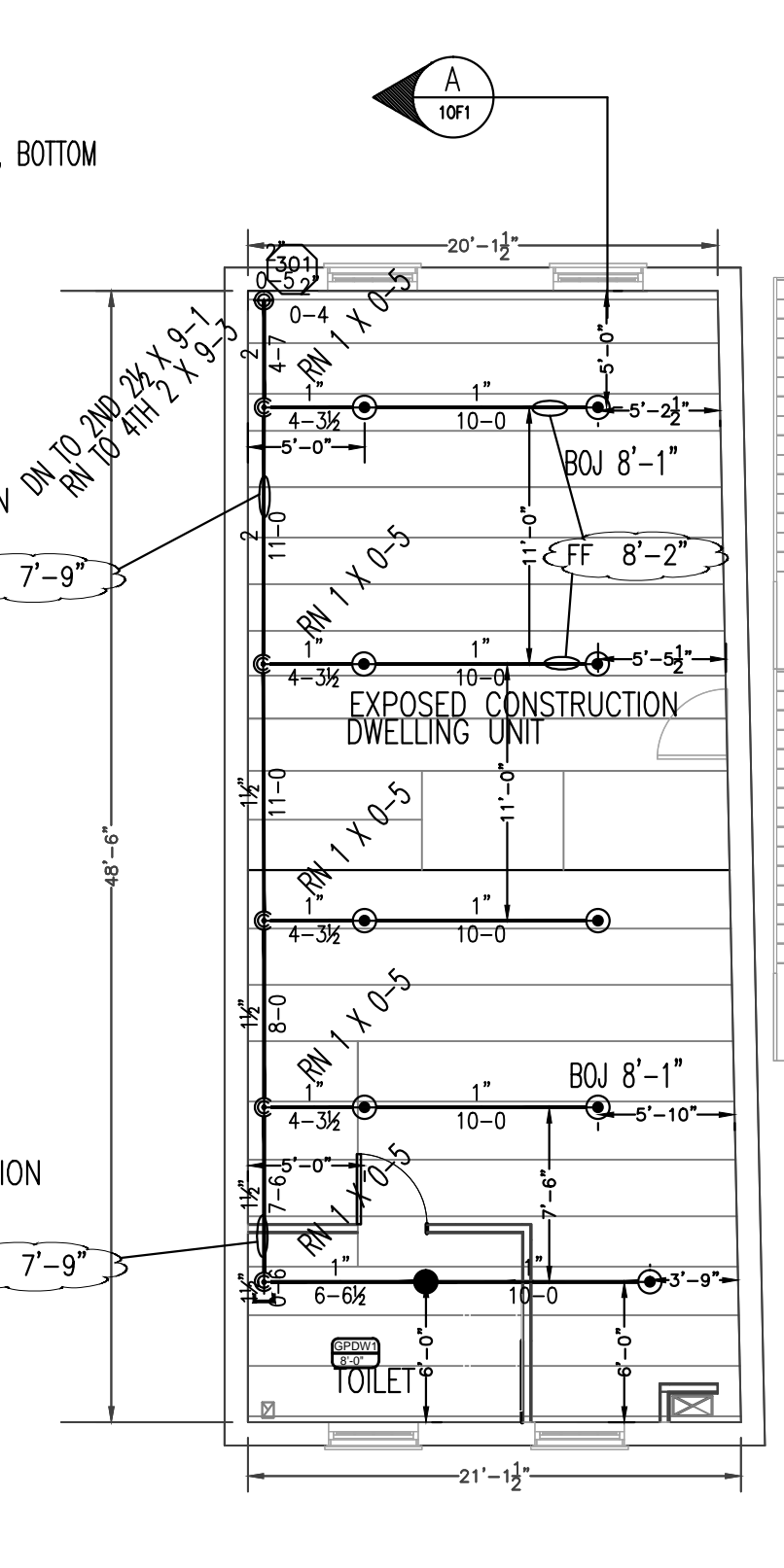
(SECOND FLOOR) HYDRAULICALLY MOST REMOTE AREA
 (1.15 GPM/SQ.FT./ 912 SQ.FT.)
 (ELEVATION @ HEIGHT OF HEAD 117'-3")



FIRE SPRINKLER PLAN - SECOND FLOOR

SCALE: 1/8"=1'
 AREA PROTECTED: 971 SQ.FT.
 FINISH FLOOR ELEVATION: 108'-0"
 COLOR CODE:

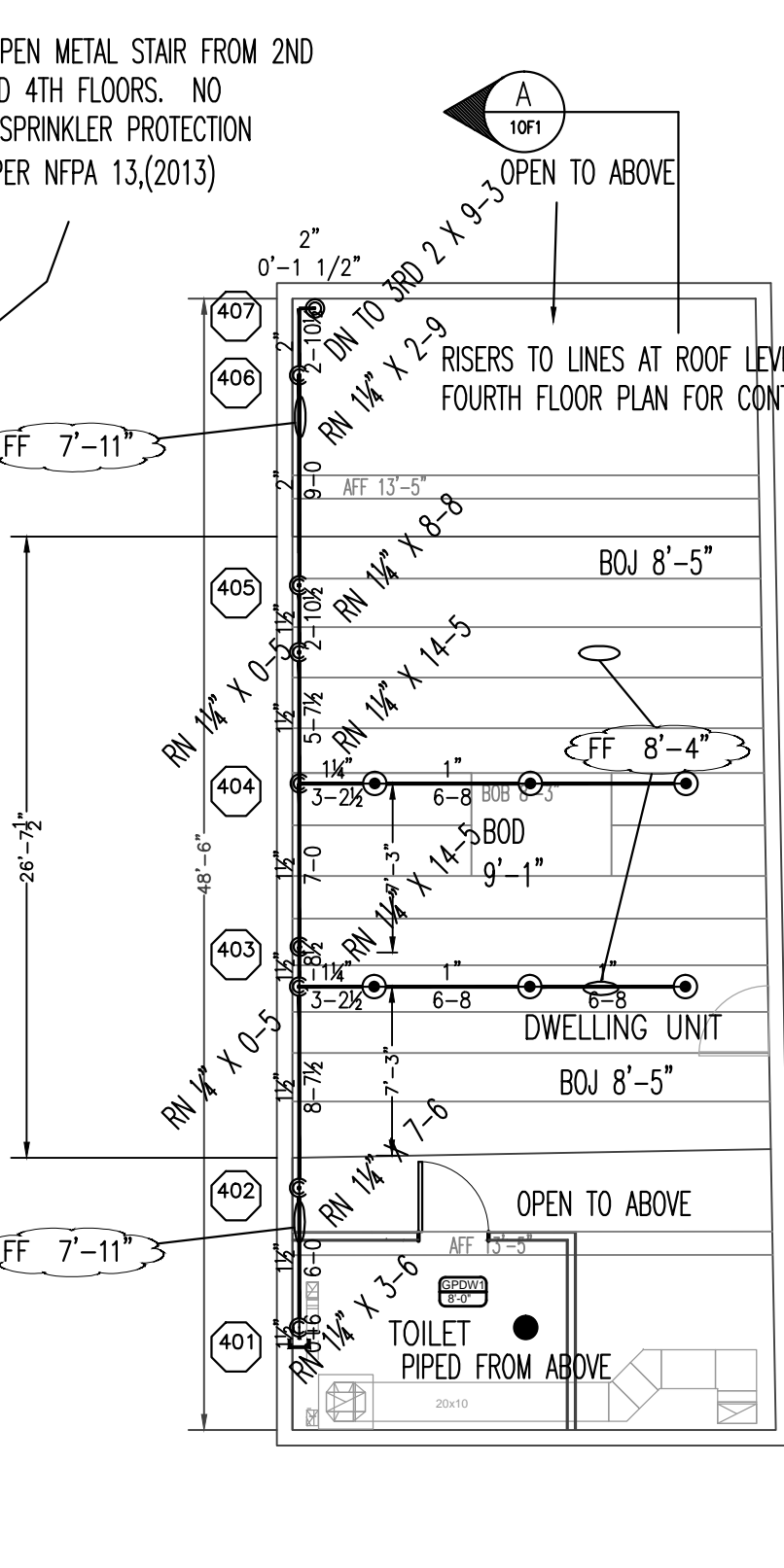
Sprinkler Head Schedule				
Symbol	Count	Thread	K-Factor	Description
○	10	1/2"	5.6	TYCO TYRIB 200 OR BRASS PENDENT TY333 on Line
○	3	1/2"	5.6	TYRIB BRASS UPRIGHT 200 OR TY333 on Line
●	3	1/2"	5.6	TYCO RFI 200 OR WHI CONCEALER TY3331 on Drop
16 = Total Number of Heads this floor				



FIRE SPRINKLER PLAN - THIRD FLOOR

SCALE: 1/8"=1'
 AREA PROTECTED: 1000 SQ.FT.
 FINISH FLOOR ELEVATION: 118'-0"
 COLOR CODE:

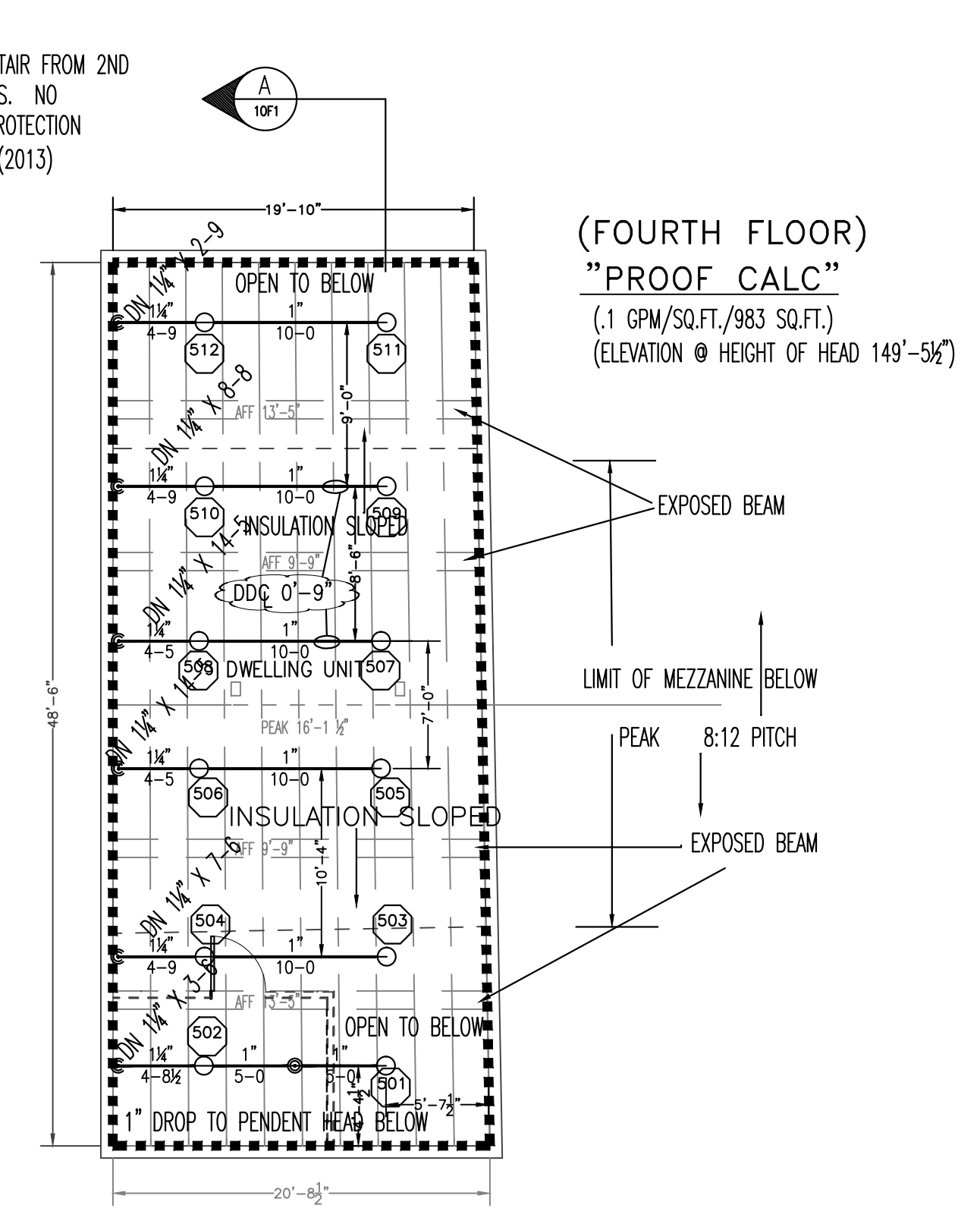
Sprinkler Head Schedule				
Symbol	Count	Thread	K-Factor	Description
○	9	1/2"	5.6	TYCO TYRIB 200 OR BRASS PENDENT TY333 on Line
●	1	1/2"	5.6	TYCO RFI 200 OR WHI CONCEALER TY3331 on Drop
10 = Total Number of Heads this floor				



FIRE SPRINKLER PLAN - FOURTH FLOOR MEZZANINE

SCALE: 1/8"=1'
 AREA PROTECTED: 640 SQ.FT.
 FINISH FLOOR ELEVATION: 127'-1"
 COLOR CODE:

Sprinkler Head Schedule				
Symbol	Count	Thread	K-Factor	Description
○	6	1/2"	5.6	TYCO TYRIB 200 OR BRASS PENDENT TY333 on Line
●	1	1/2"	5.6	TYCO RFI 200 OR WHI CONCEALER TY3331 on Drop
7 = Total Number of Heads this floor				

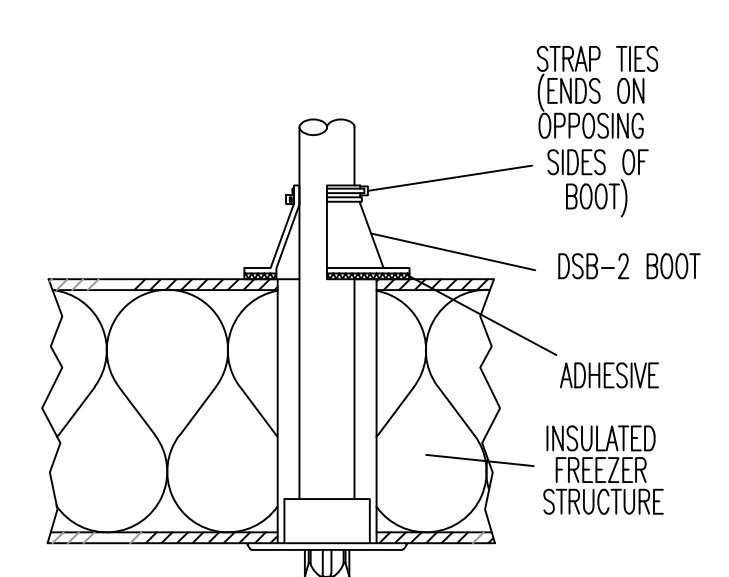
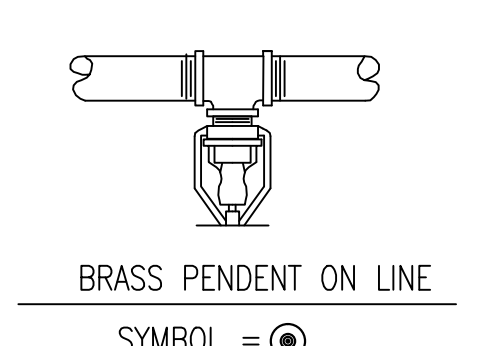
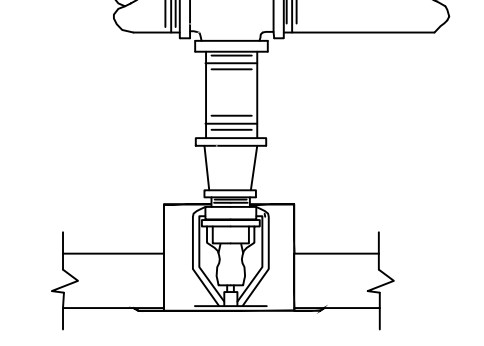
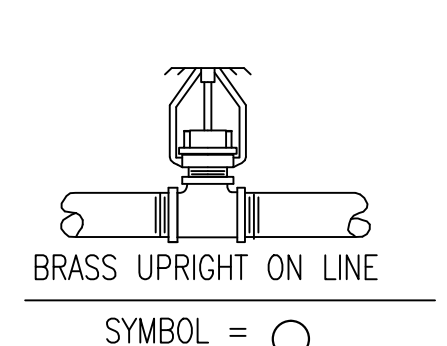


FIRE SPRINKLER PLAN - FOURTH FLOOR

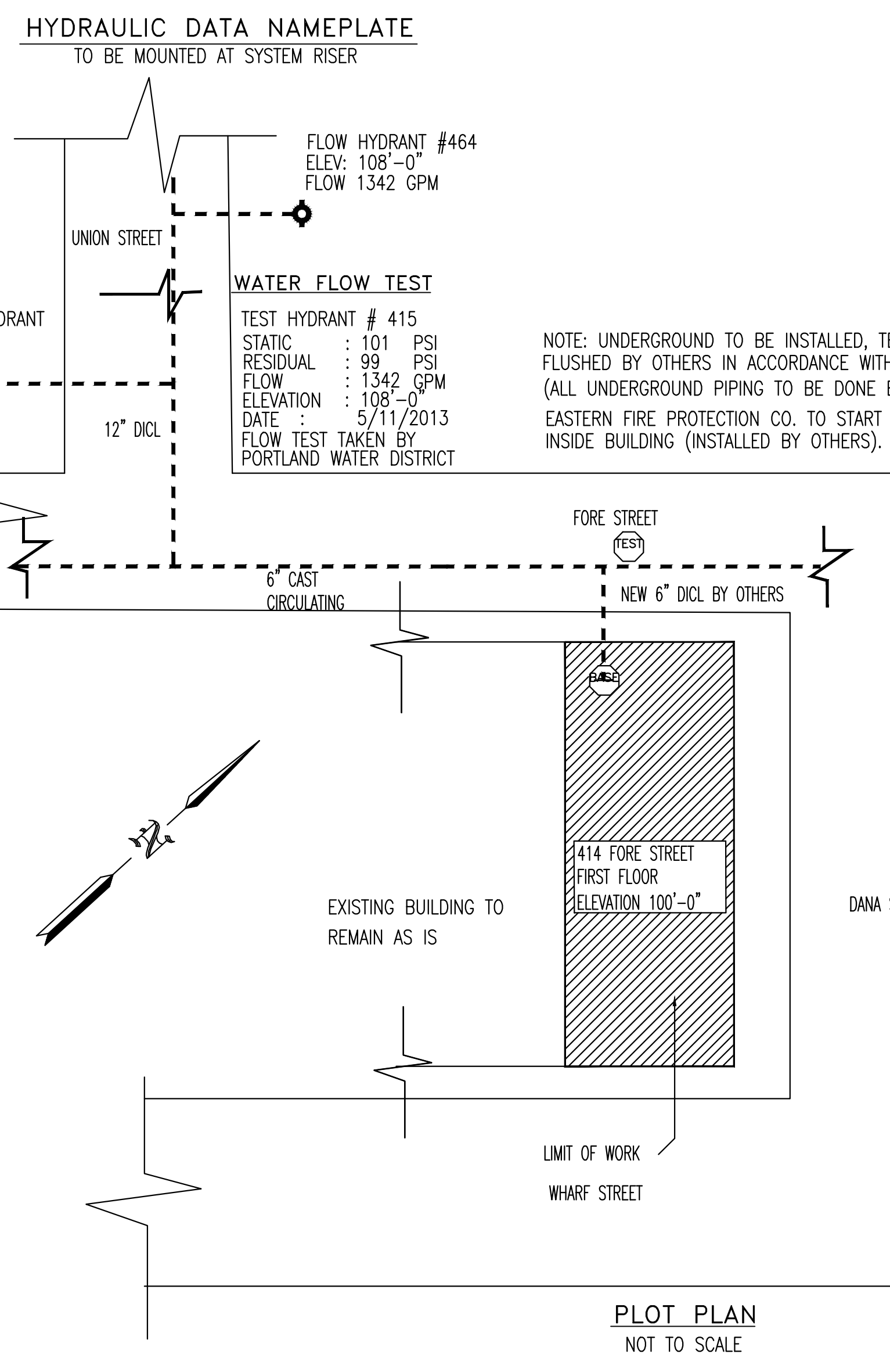
SCALE: 1/8"=1'
 AREA PROTECTED: 983 SQ.FT.
 FINISH FLOOR ELEVATION: 127'-1"
 COLOR CODE:

Sprinkler Head Schedule				
Symbol	Count	Thread	K-Factor	Description
○	12	1/2"	5.6	TYCO TYRIB BRASS UPRIGHT 200 OR TY333 on Line
12 = Total Number of Heads this floor				

HYDRAULIC-SYSTEM
 THIS BUILDING IS PROTECTED BY A HYDRAULICALLY DESIGNED AUTOMATIC SPRINKLER SYSTEM.
 LOCATION: SECOND FLOOR
 No. OF SPRINKLERS: 14 (CALCULATED)
 BASIS OF DESIGN:
 1. DENSITY (GPM/SQ.FT.): .1/.15
 2. DESIGNED AREA OF DISCHARGE (SQ.FT.): 971
 SYSTEM DEMAND:
 1. WATER FLOW RATE (GPM): 317.95
 2. RESIDUAL PRESSURE AT THE BASE OF THE RISER: 87.113 (PSI)



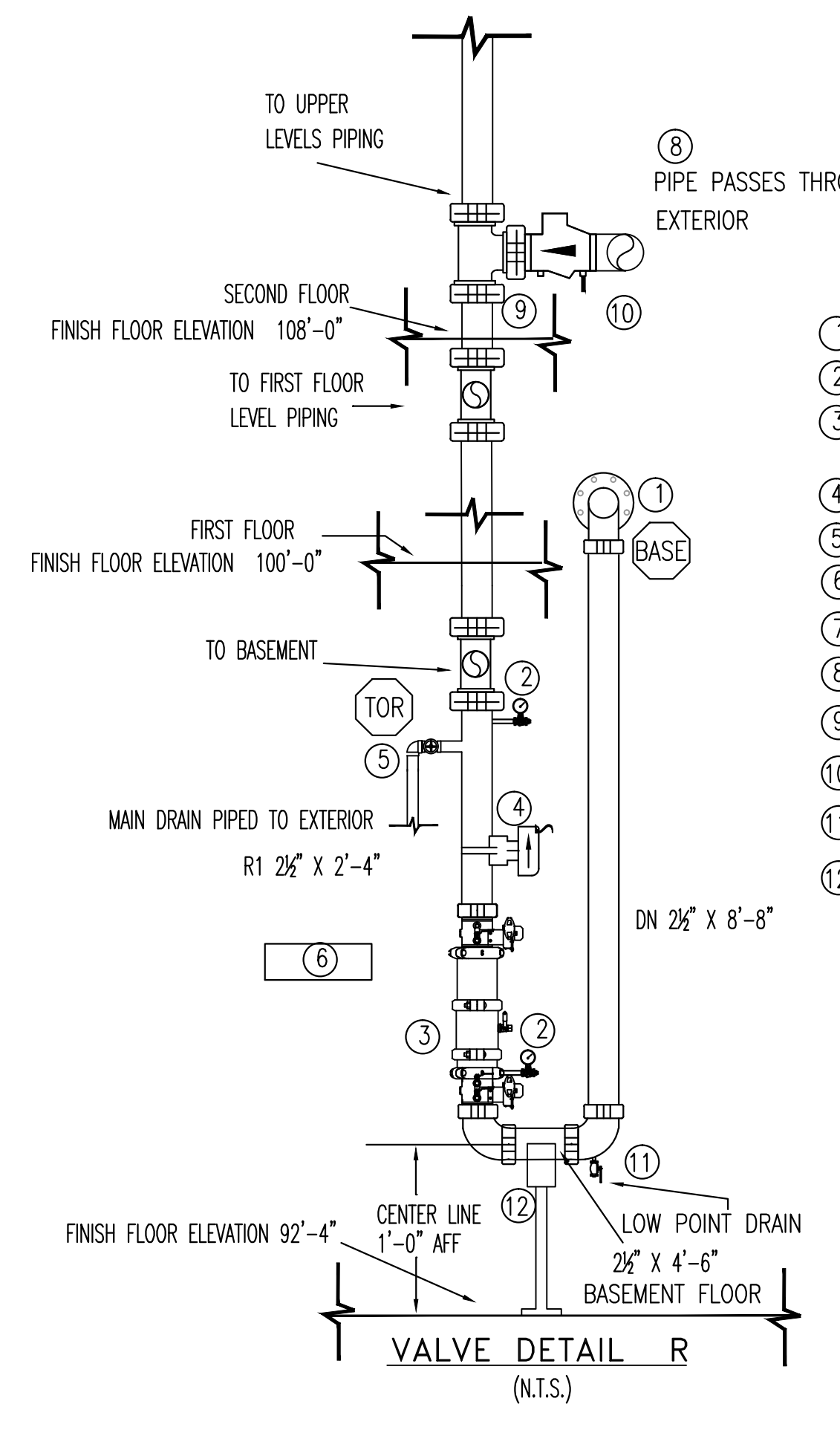
SPRINKLER HEAD DETAILS
 NOT TO SCALE



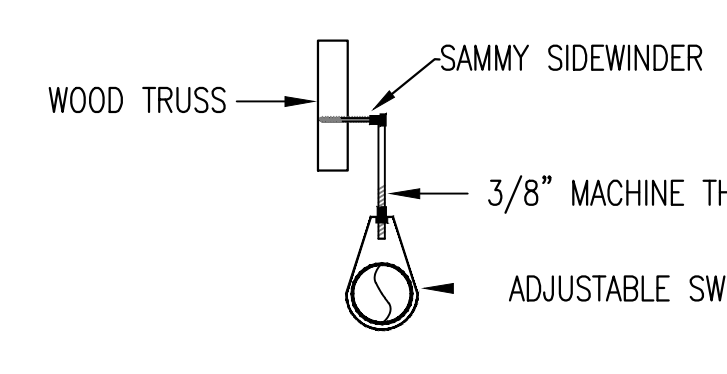
PLOT PLAN
 NOT TO SCALE

GENERAL NOTES

- ALL WIRING TO BE DONE BY OTHERS
- SPRINKLER SYSTEM INSTALLATION TO COMPLY WITH NFPA PAMPHLET #13 (2013) AND SECTIONS 210500, 211313.
- ALL DIMENSIONS ARE SHOWN FOR GENERAL LOCATION OF SPRINKLER HEADS; PIPING MAY VARY TO SUIT ACTUAL FIELD CONDITIONS.
- OCCUPANCY DESCRIPTION AND CLASSIFICATION: KITCHEN AREAS, BASEMENT / MECHANICAL: ORDINARY GROUP I; BATHROOMS, ENTRANCE, SEATING AND DWELLING UNITS: LIGHT HAZARD
- ACOUSTICAL CEILING TILE (ACT) TO BE LISTED NON-COMBUSTIBLE WITH UL FLAME SPREAD OF LESS THAN 25.
- PENDENT SPRINKLER HEADS TO BE INSTALLED CENTERLINE ACOUSTICAL CEILING TILE
- F.F. ⌋ INDICATES FINISH FLOOR UP TO CENTERLINE OF PIPE.
- D ⌋ INDICATES DECK DOWN TO CENTERLINE OF PIPE.
- MAXIMUM HEIGHT OF STORAGE NOT TO EXCEED 8'-0"
- INDICATES HYDRAULIC REFERENCE POINT



VALVE DETAIL R
 (N.T.S.)

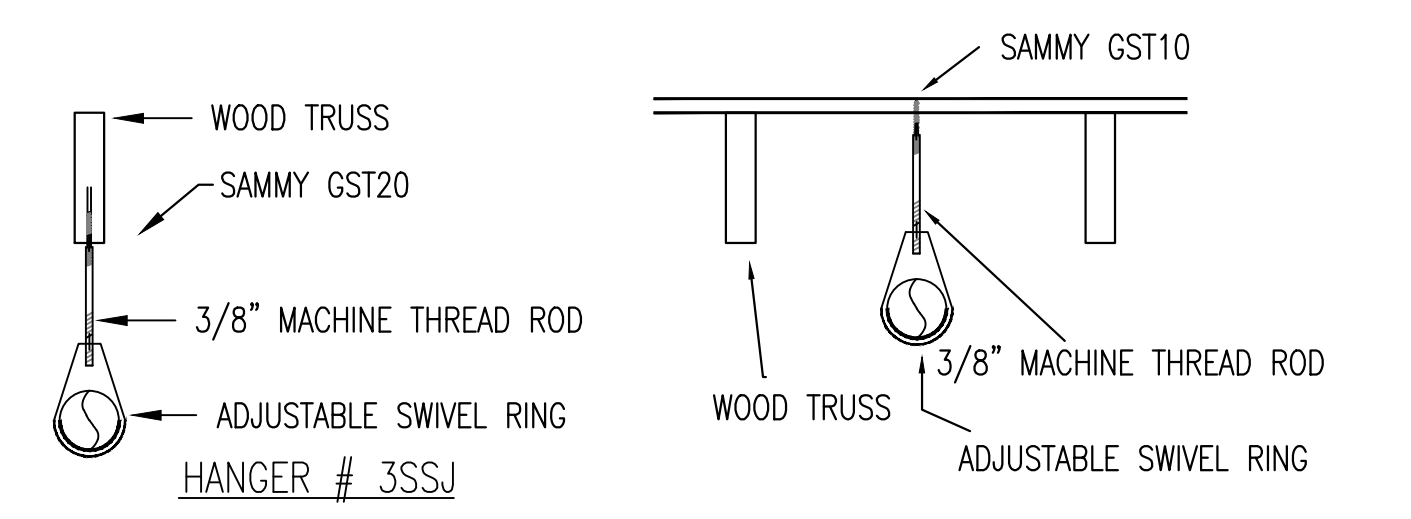
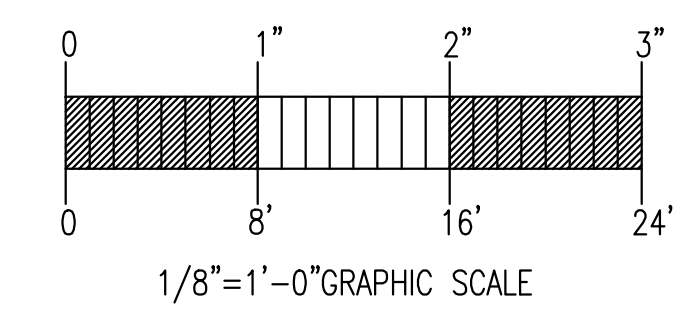


HANGER DETAILS
 NOT TO SCALE

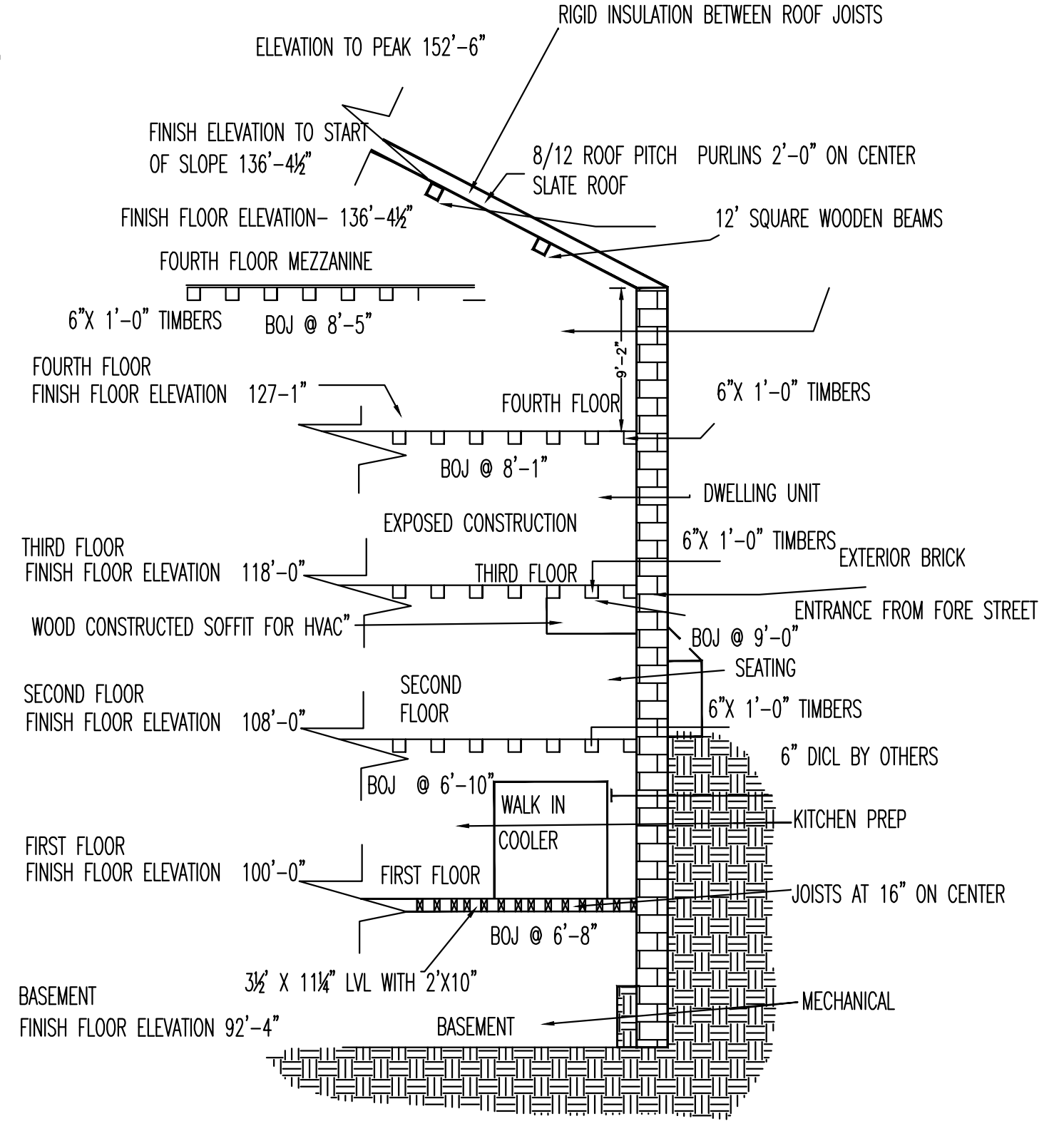
ALL HANGERS TO BE PROVIDED AND INSTALLED AS PER NFPA # 13
 3/8" ROD FOR 1" TO 4" PIPE
 1/2" ROD FOR 5" TO 8" PIPE

LEGEND

- ① 6" UNIFLANGE BY OTHERS
- ② WATER PRESSURE GAUGE W/ 1/4" THREE-WAY VALVE.
- ③ 2 1/2" AMES C200 BACKFLOW PREVENTER WITH GROOVED BUTTERFLY VALVES, TAMPERED, NORMALLY OPEN.
- ④ 2 1/2" POTTER MOD. VSR FLOW SWITCH.
- ⑤ 1 1/4" MAIN DRAIN & ALARM TEST VALVE, #1011.
- ⑥ SPARE HEAD BOX WITH WRENCH & 3 SPARE SPRINKLERS OF EACH TYPE.
- ⑦ POTTER PBA1206 ELECTRIC BELL (SEE SECOND FLOOR PLAN)
- ⑧ 2 1/2" SINGLE FIRE DEPARTMENT CONNECTION (SEE SECOND FLOOR PLAN)
- ⑨ 2 1/2" GROOVED CHECK VALVE, TYCO CV 1F
- ⑩ 1/2" AUTOMATIC BALL DRIP
- ⑪ 1" AUXILIARY DRAIN
- ⑫ PIPE STAND



BUILDING SECTION "A-A"
 SCALE: N.T.S.



GENERAL NOTES	DATE	REVISIONS	REQUIRED APPROVALS	FIRE SPRINKLER PLANS & DETAILS
SPRINKLER SYSTEM INSTALLATION TO COMPLY WITH NFPA PAMPHLET # 13 2013 AND SECTIONS 210500, 211313.			OWNER / ARCHITECT STATE FIRE MARSHAL PORTLAND FIRE DEPARTMENT	DWG. NO. 1 OF 1
BRANCH LINE PIPING (1"-2") TO BE BLACK SCHEDULE 40 JOINED BY THREADED DUCTILE IRON FITTINGS			DRAWN BY: MJBH NICET LEVEL: CERT.#	JOB NUMBER AU-5094-13
MAIN PIPING (2 1/2"-3") TO BE SCHEDULE # 10 BLACK WITH GROOVED ENDS & WELDED OUTLETS JOINED BY MECHANICAL COUPLINGS			CHECKED BY: WAF NICET LEVEL: III CERT.# 095574	SCALE AS NOTED
OWNER TO PROVIDE SUFFICIENT HEAT THROUGHOUT BUILDING TO PREVENT FREEZING OF WATER FILLED SPRINKLER PIPING AND EQUIPMENT. (40° F)			CONTRACTOR LICENSE # 101 CONTRACTOR RMS # 368	DATE 11/11/13

CENTRAL PROVISIONS
 414 FORE STREET PORTLAND, MAINE

CONTRACT WITH: LANDMARC CONSTRUCTION

EASTERN FIRE PROTECTION
 AUBURN/LEWISTON INDUSTRIAL AIRPARK, AUBURN, MAINE 04210