

HARRIMAN

AUBURN PORTLAND MANCHESTER

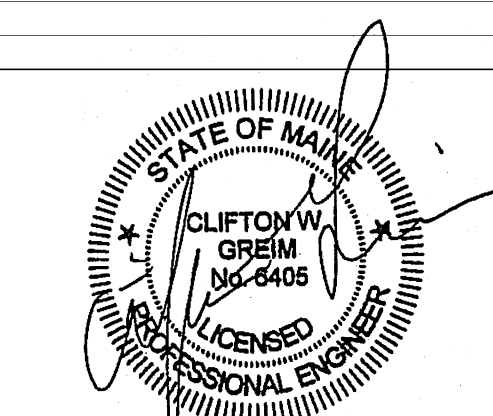
GOULD RESTAURANT

PORTLAND, MAINE

Harriman Project No. 12752

Key Plan Proj North

| Mark | Date | Description |
|------|----------|----------------------------|
| | 05-21-13 | 75% REVIEW |
| | 05-31-13 | ISSUED FOR CONSTRUCTION |
| | 07-26-13 | RE-ISSUED FOR CONSTRUCTION |
| | 09-23-13 | RE-ISSUED FOR CONSTRUCTION |

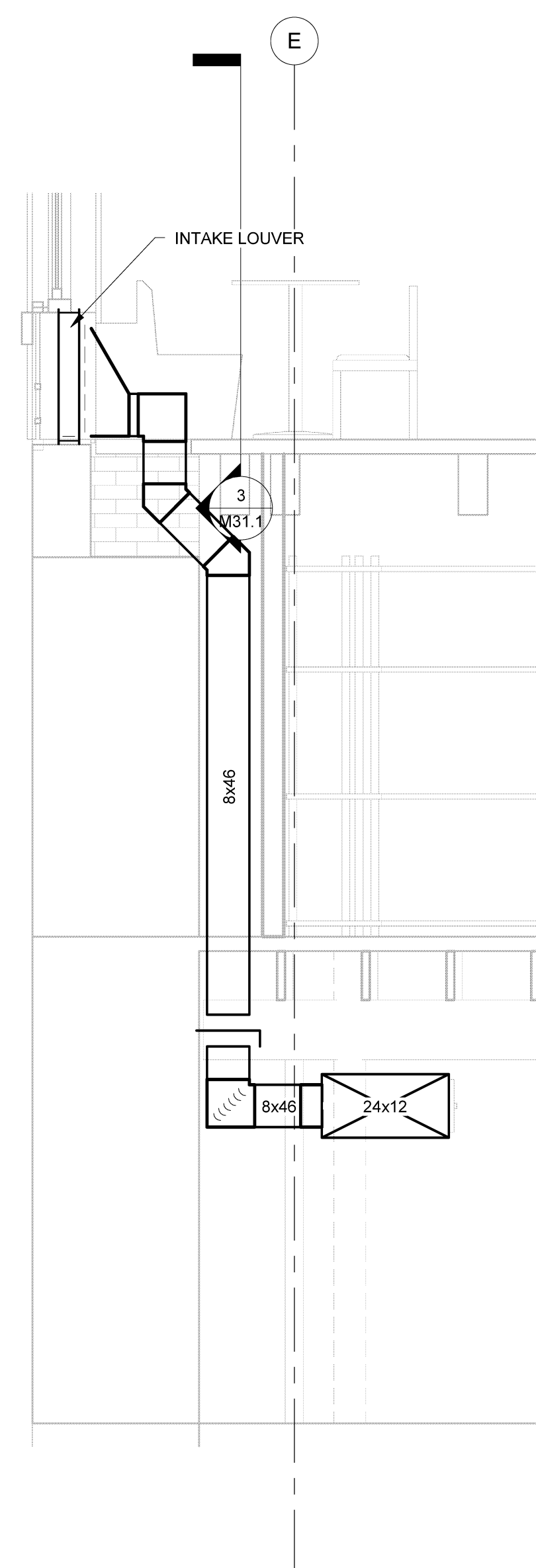


| Drawing Scales | |
|----------------|---------------|
| As indicated | 0 1' 2' 3' |
| 0 2' 4' 6' | 0 6" 1' 1'-6" |
| 1/4" = 1'-0" | 1" = 1'-0" |

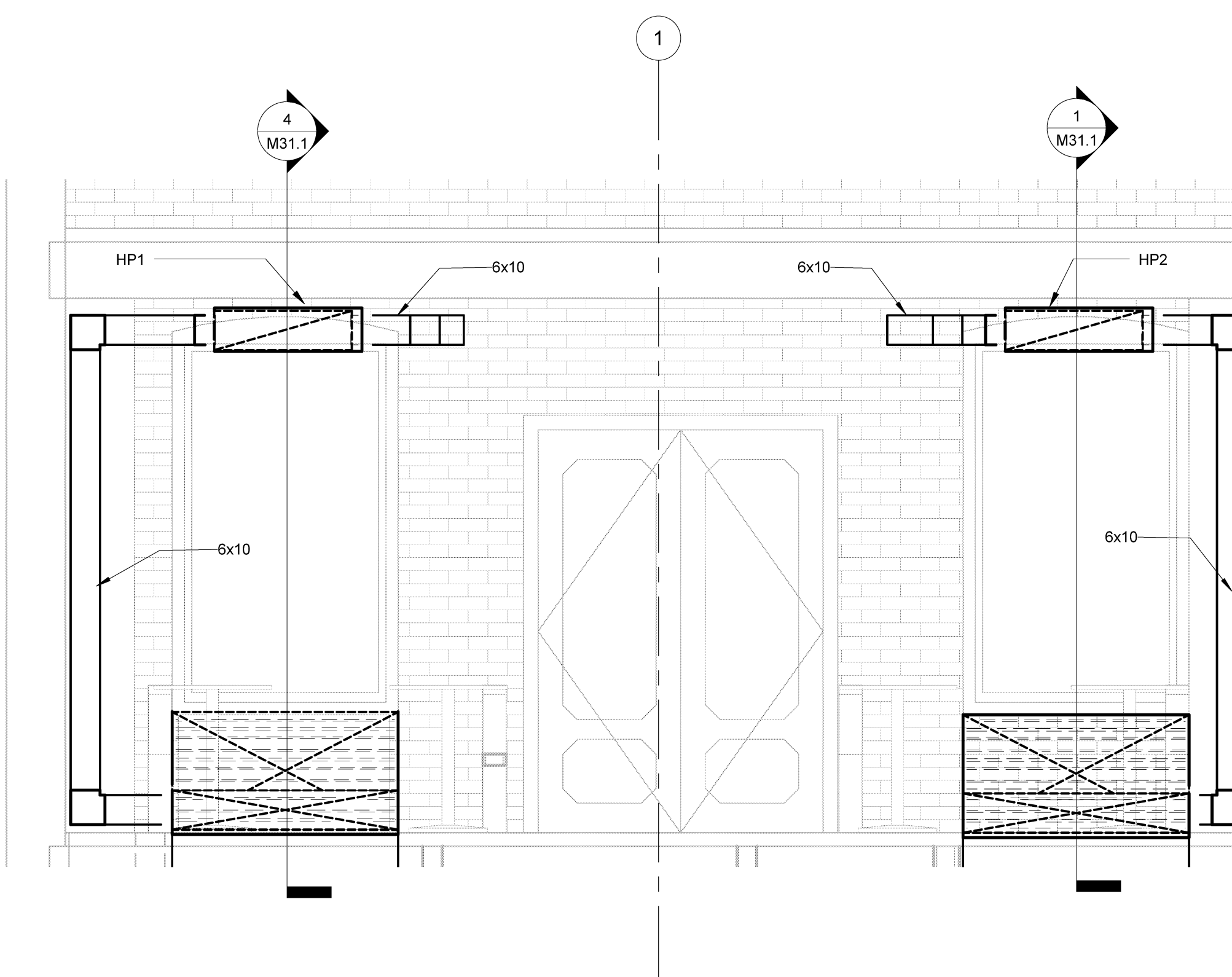
PA / PE: CG © 2013 Harriman Associates
Drawn By: JSC

SECTIONS

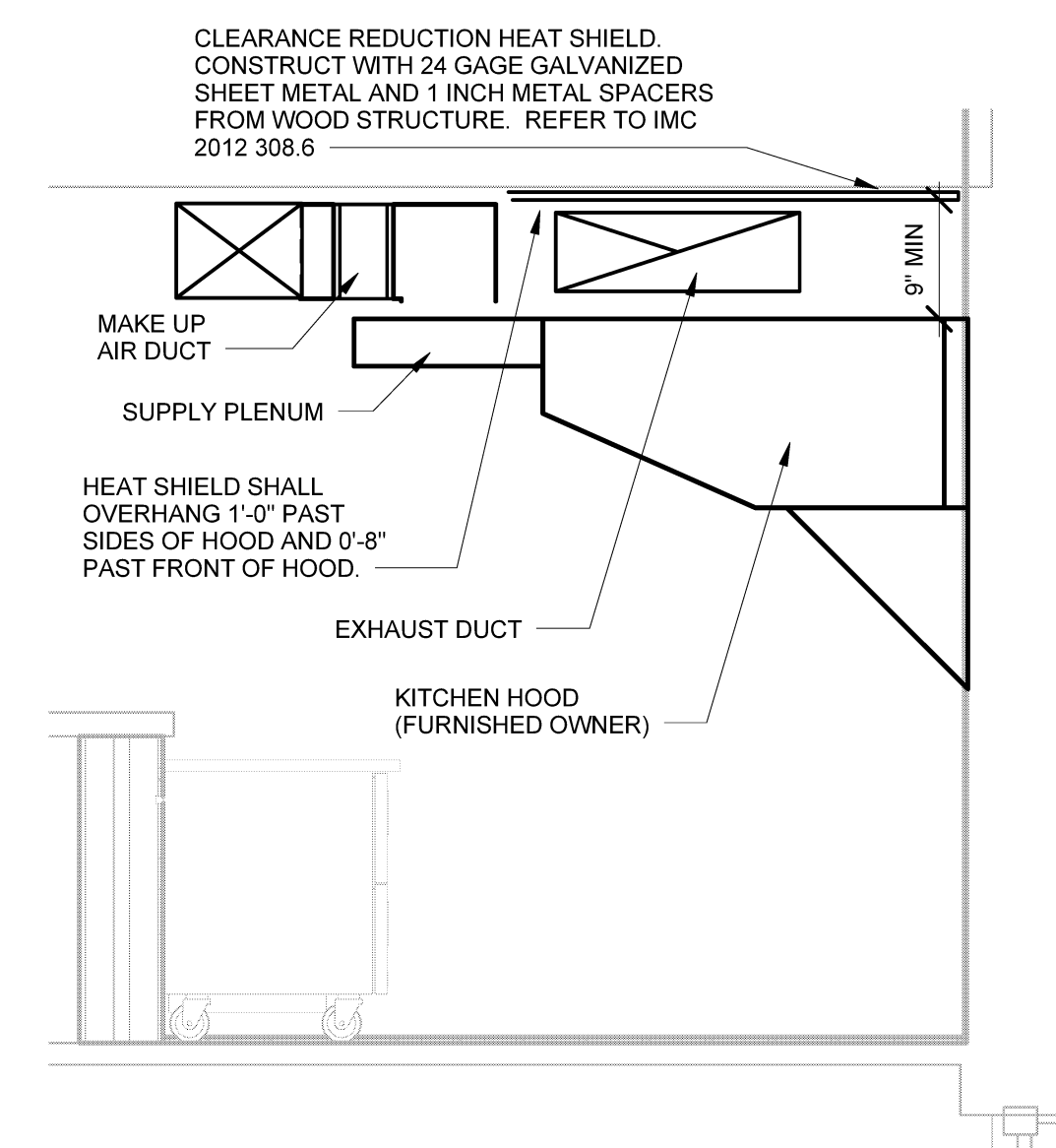
M31.1



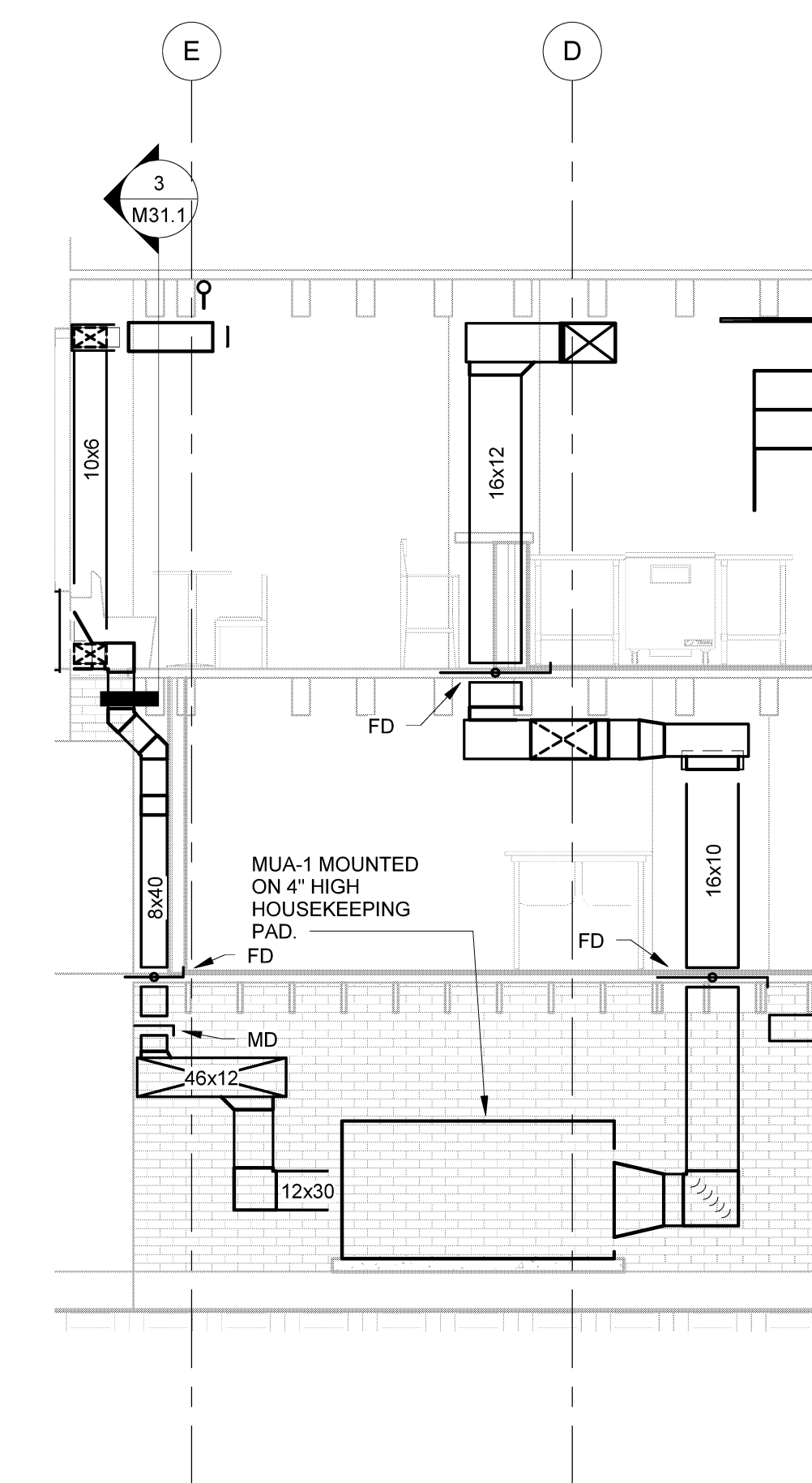
4 SECTION AT INTAKE LOUVER
SCALE: 1/2" = 1'-0"



3 SECTION AT FORE ST ENTRANCE
SCALE: 1/2" = 1'-0"



2 SECTION AT KITCHEN HOOD
SCALE: 1/2" = 1'-0"



1 SECTION AT MUA DUCT RISE
SCALE: 1/4" = 1'-0"