



HARRIMAN

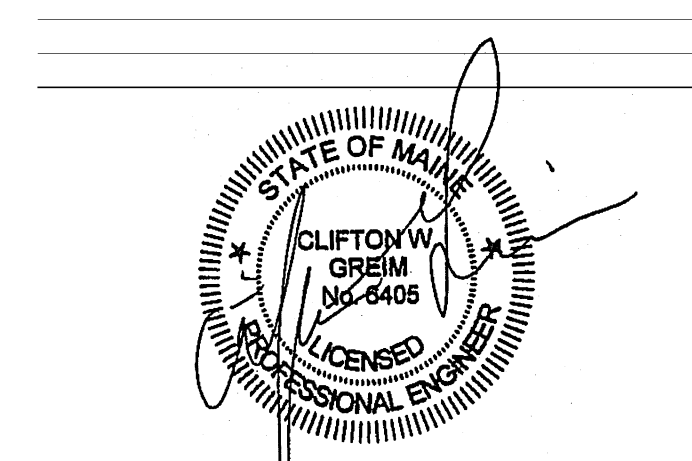
AUBURN PORTLAND MANCHESTER

GOULD RESTAURANT

PORTLAND, MAINE

Harriman Project No.	12752
Key Plan	Proj North

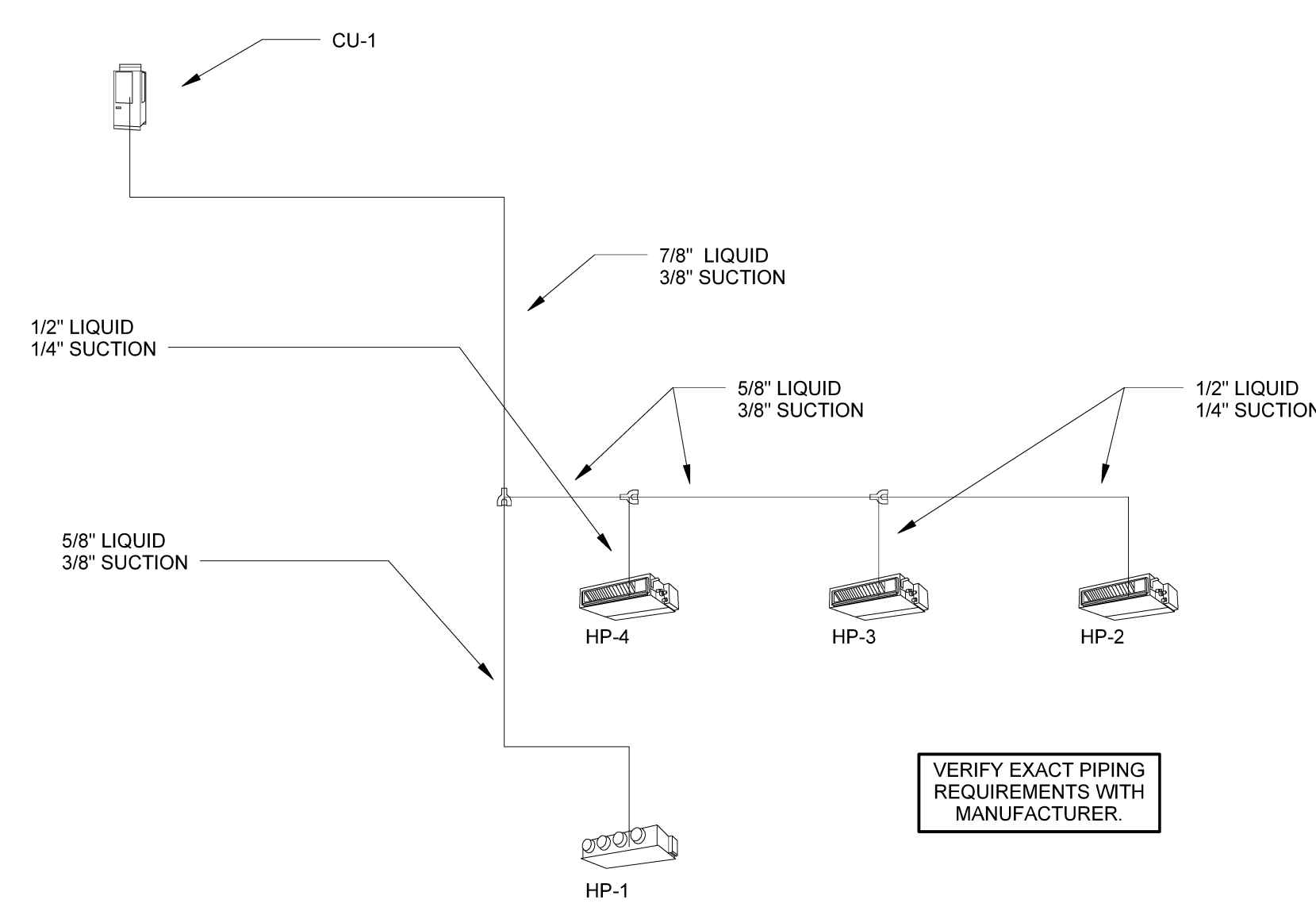
Issues and Revisions		
Mark	Date	Description
05-31-13		ISSUED FOR CONSTRUCTION
07-26-13		RE-ISSUED FOR CONSTRUCTION
09-23-13		RE-ISSUED FOR CONSTRUCTION



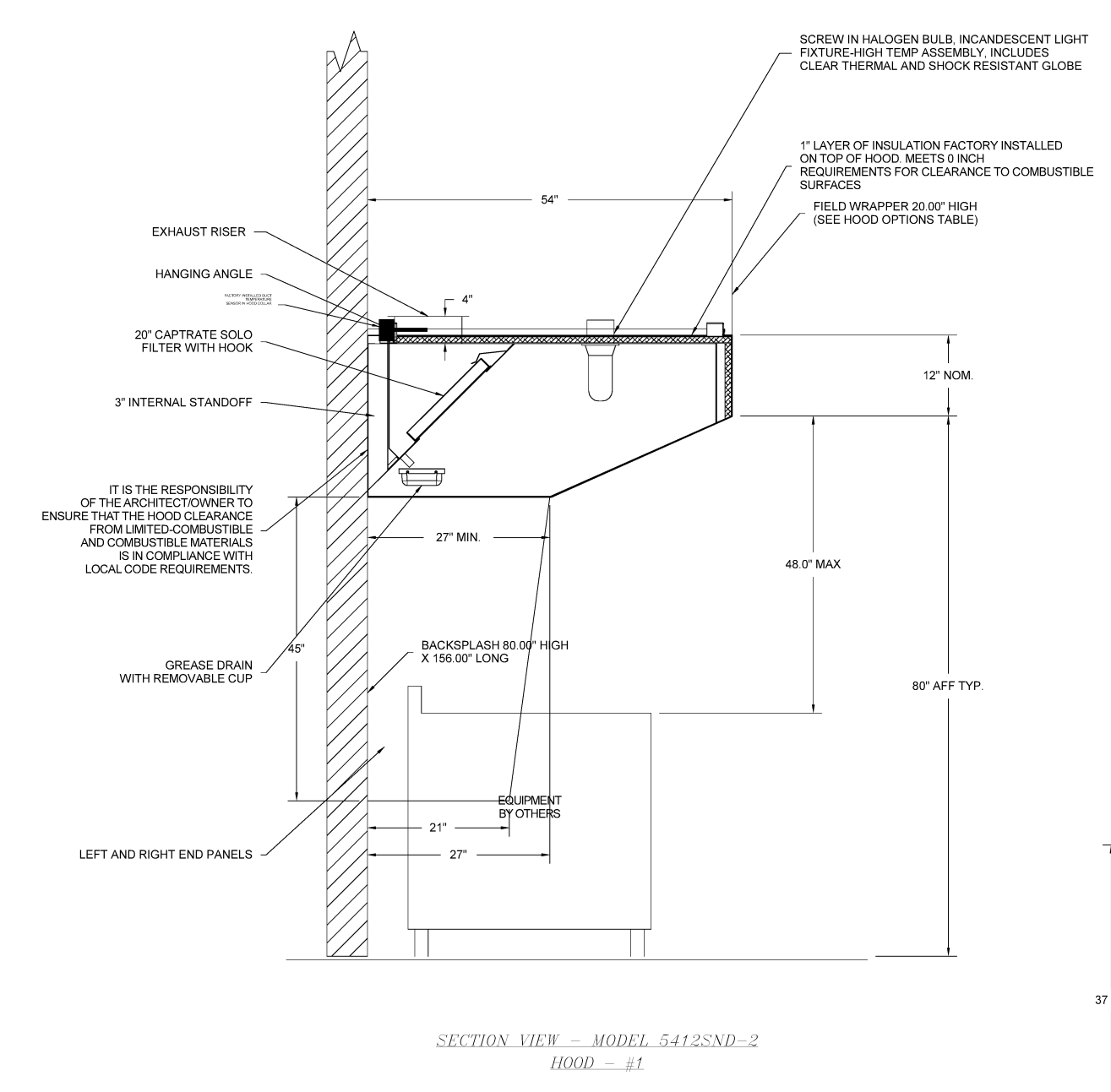
Drawing Scales	
NO SCALE	
PA / PE:	CG
Drawn By:	JSC
	© 2013 Harriman Associates

DETAILS

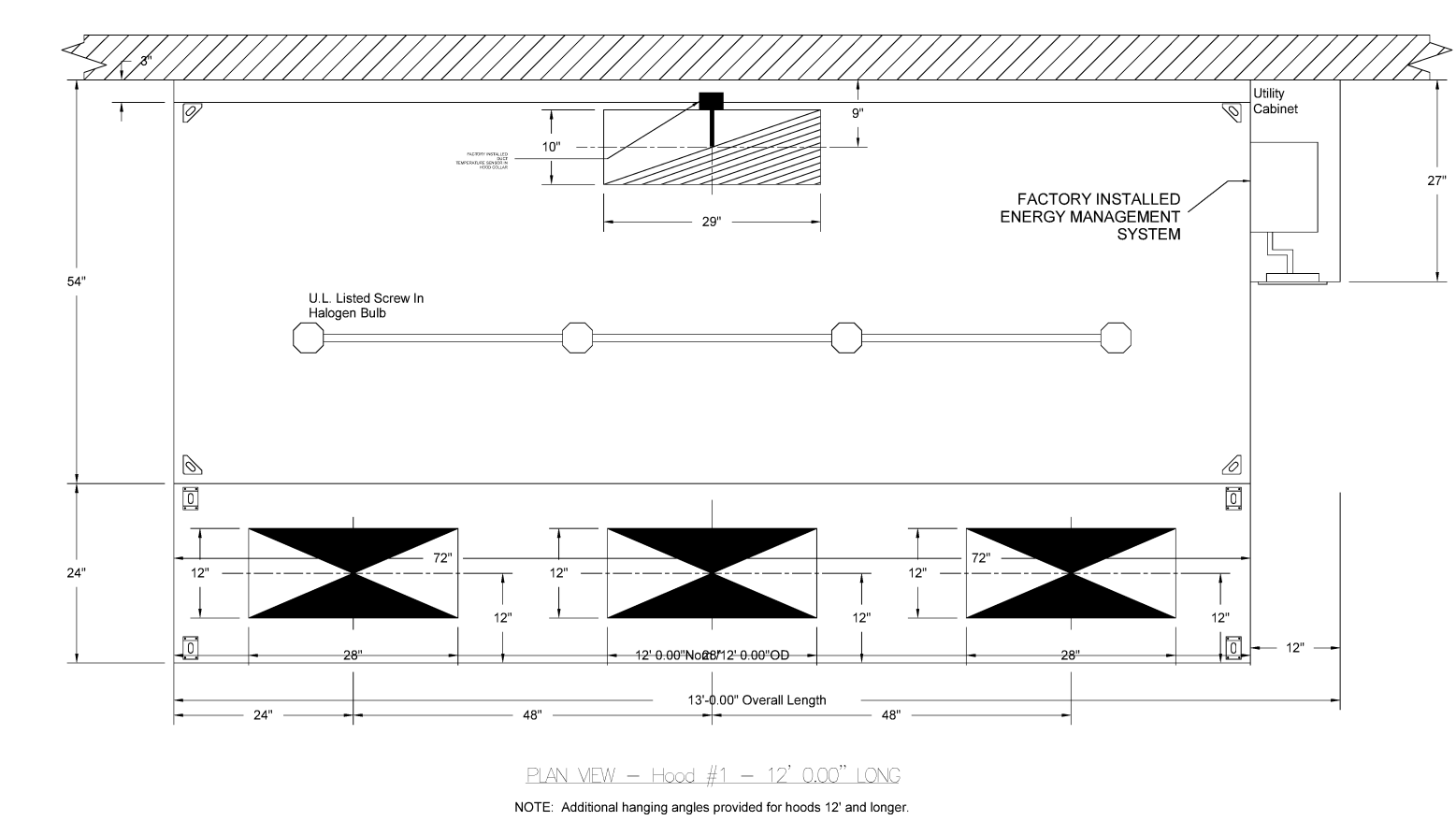
M30.1



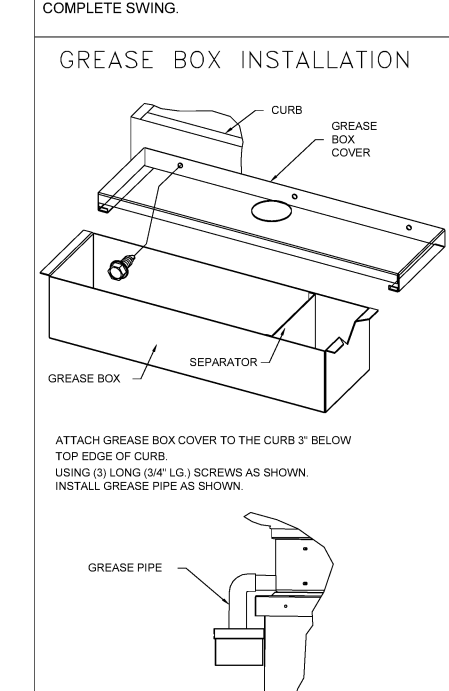
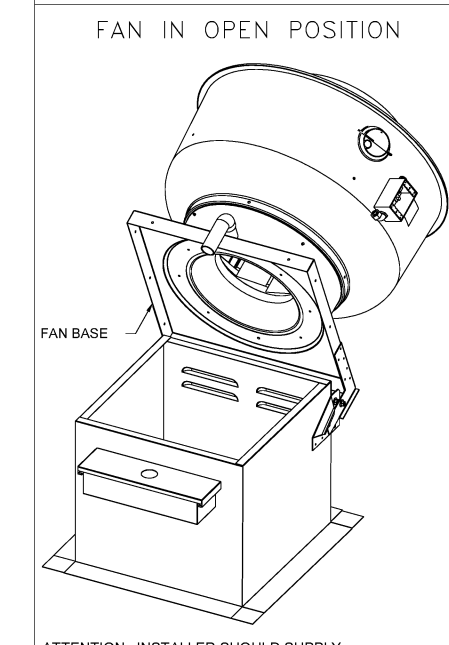
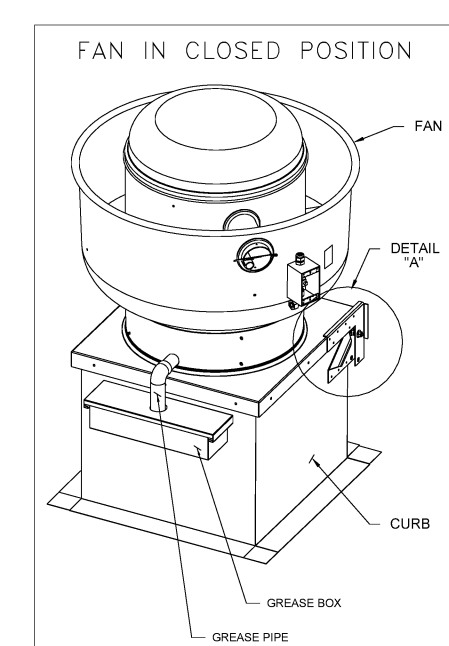
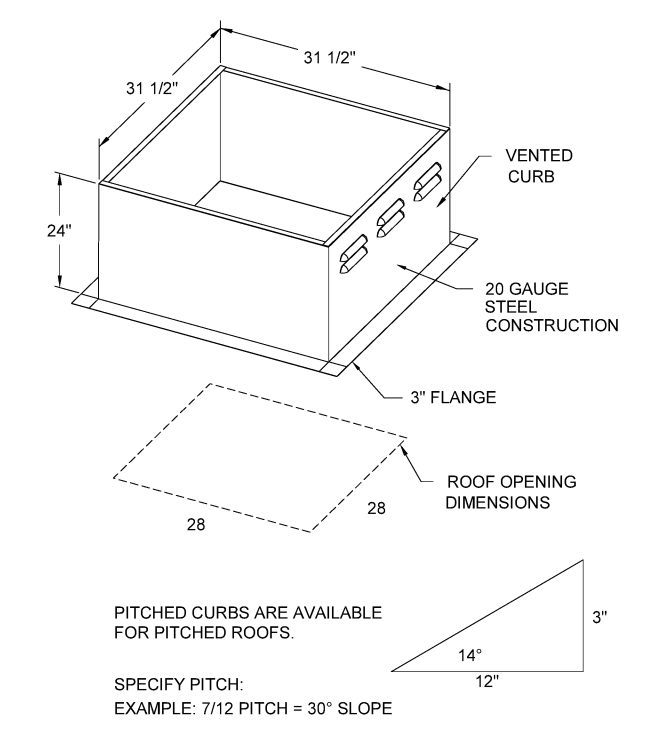
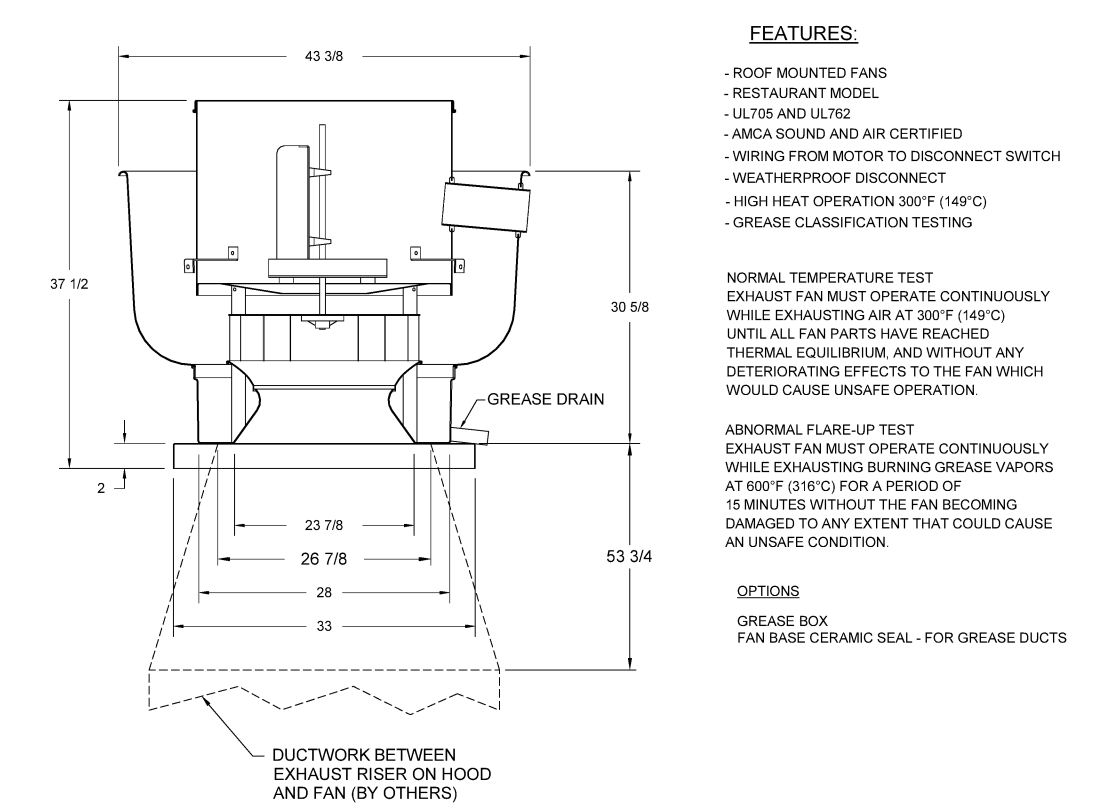
5 VARIABLE REFRIGERANT PIPING NO SCALE



1 HOOD DETAILS NO SCALE

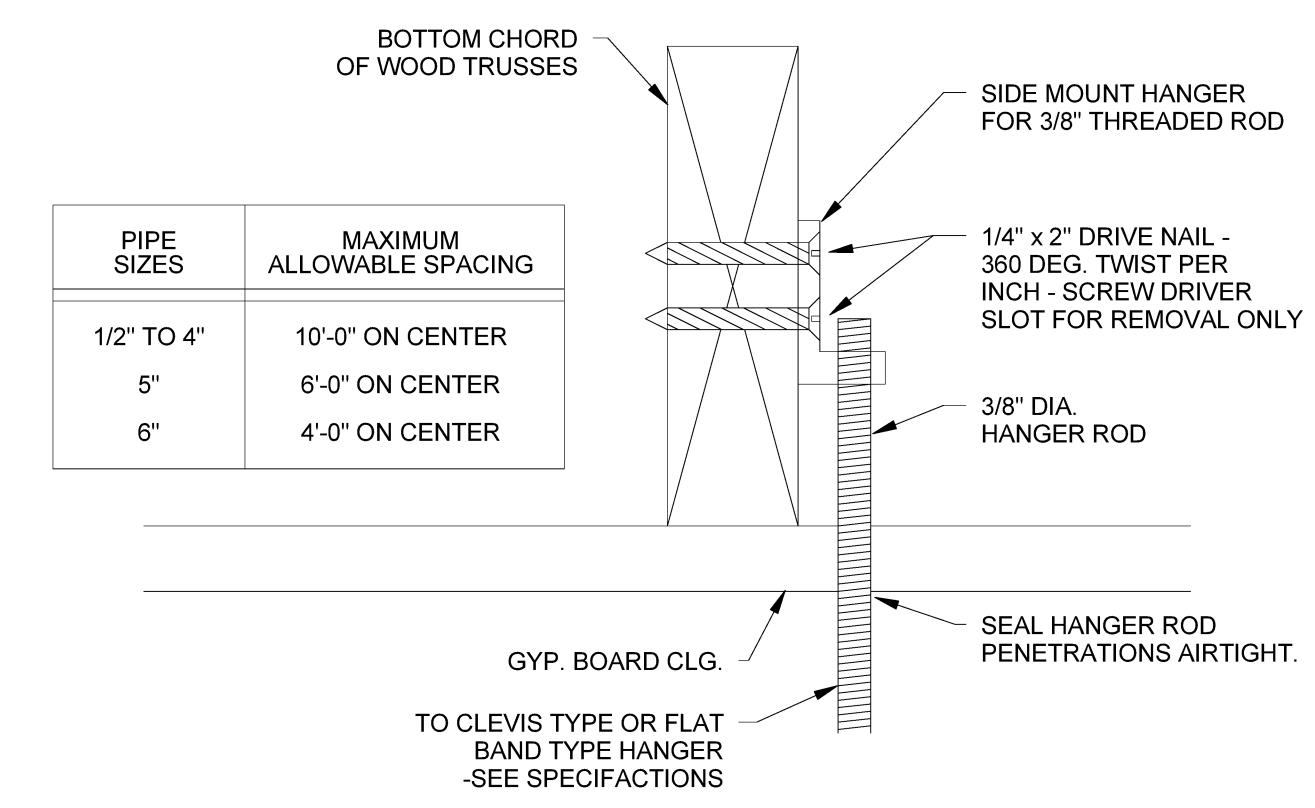


FAN #1 NCA24HPFA - EXHAUST FAN



ELECTRICAL PACKAGE NOTES

- A PRE-WIRED ELECTRICAL CONTROL PACKAGE SHALL BE PROVIDED TO OPERATE THE HOOD CURB AND FAN.
- PACKAGE SHALL CONSIST OF SWITCH PANEL WITH LIGHT INTERLOCK TO HOOD CURB AND FAN, UL706/UL707 WEATHERPROOF DISCONNECT SWITCH, AND A THERMAL CUT-OFF SWITCH ON THE MOTOR. THE SWITCHES SHALL BE MOUNTED ON THE CURB. THE SWITCHES SHALL BE MOUNTED ON THE CURB. THE SWITCHES SHALL BE MOUNTED ON THE CURB.
- THE CURB SHALL BE MOUNTED ON THE CURB. THE CURB SHALL BE MOUNTED ON THE CURB. THE CURB SHALL BE MOUNTED ON THE CURB.
- THE CURB SHALL BE MOUNTED ON THE CURB. THE CURB SHALL BE MOUNTED ON THE CURB. THE CURB SHALL BE MOUNTED ON THE CURB.



8 PIPE HANGER AT WOOD TRUSSES NO SCALE