

HARRIMAN

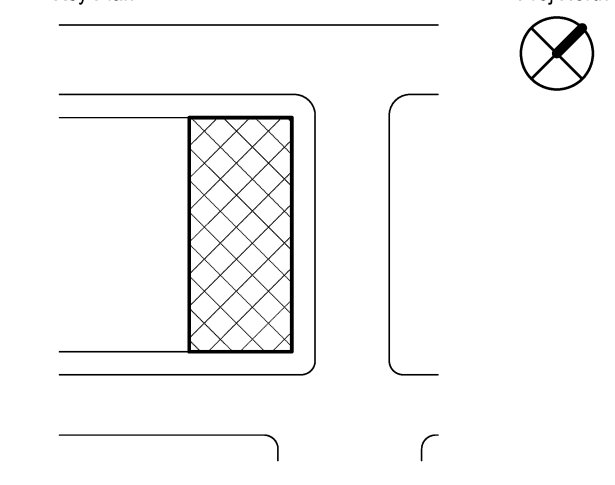
AUBURN PORTLAND MANCHESTER

GOULD RESTAURANT

414 FORE STREET
PORTLAND, ME 04101

Harriman Project No. 12752

Key Plan Proj North



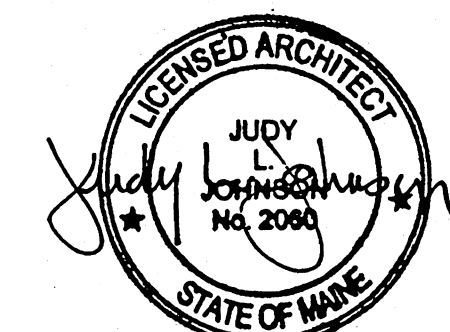
OCCUPANT LOAD TABLE			
FLOOR	AREA	BASIS OF CALCULATION SF/PERSON	OCCUPANCY
BASEMENT (3)	STORAGE 930 SF	300 SF (GROSS)	3
FIRST FLOOR (WHARF STREET) (36)	SEATING 223 SF	7 SF (NET)	33
	BACK BAR/PREP 313 SF	100 SF (GROSS)	3
	STORAGE (COOLER) 71 SF	300 SF (GROSS)	0
SECOND FLOOR (FORE STREET) (44)	SEATING (LOOSE) 290 SF	15 SF (NET) 19 SEATS	40
	SEATING (BENCH) 32 LF	18"/PERSON 21 SEATS	
	KITCHEN 357 SF	100 SF (GROSS)	4
THIRD FLOOR (5)	930 SF	200 SF (GROSS)	5
FOURTH FLOOR (5)	930 SF	200 SF (GROSS)	5
FIFTH FLOOR (LOFT) (1)	STORAGE 350 SF	300 SF (GROSS)	1

GENERAL NOTES:

- SEE E10.1 ELECTRICAL PART PLANS LIGHTING FOR LOCATIONS OF EMERGENCY LIGHTING
- SEE E10.2 ELECTRICAL PART PLANS LIGHTING FOR LOCATIONS OF EXIT SIGNS

Issues and Revisions

Mark	Date	Description
	05-21-13	75% REVIEW
	05-31-13	ISSUED FOR CONSTRUCTION
	06-10-13	ISSUED FOR PERMITTING
	07-26-13	RE-ISSUED FOR CONSTRUCTION
	09-23-13	RE-ISSUED FOR CONSTRUCTION

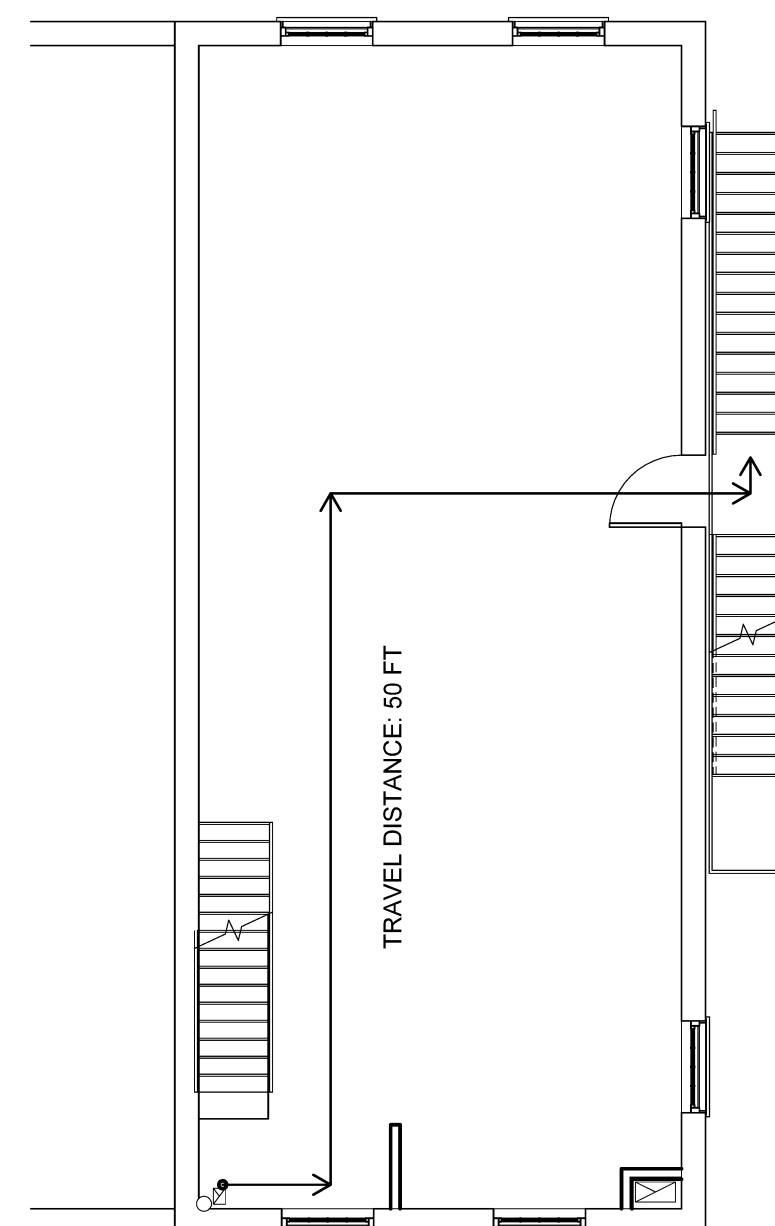


Drawing Scales	0	4'	8'	12'
As indicated				

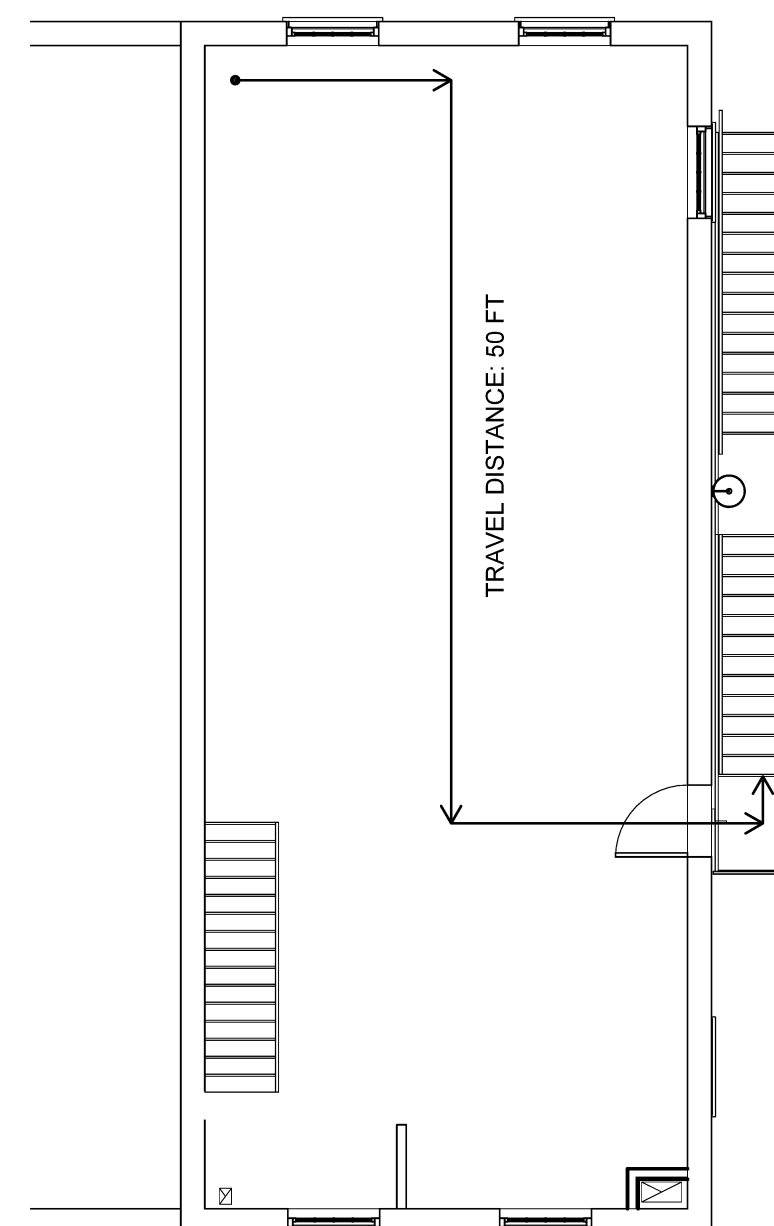
PA / PE: RBB	© 2013
Drawn By: CMP	Harriman Associates

LIFE SAFETY PLANS

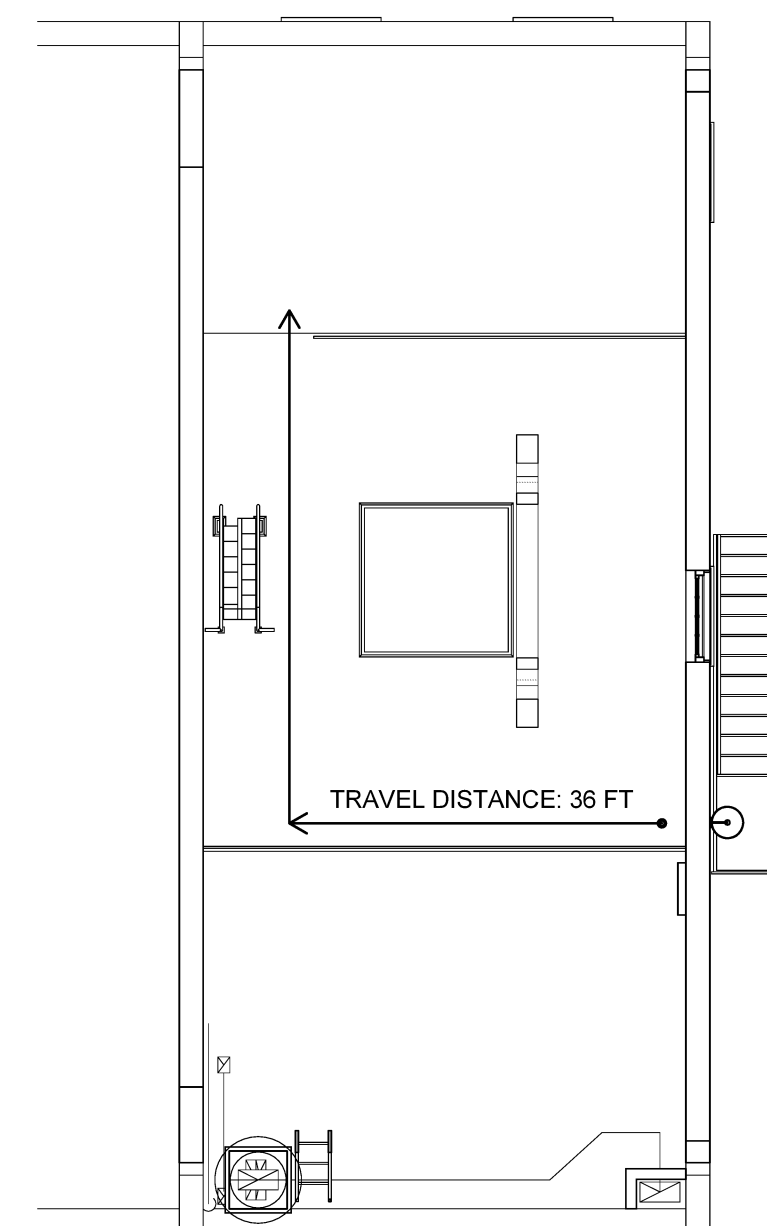
A01.1



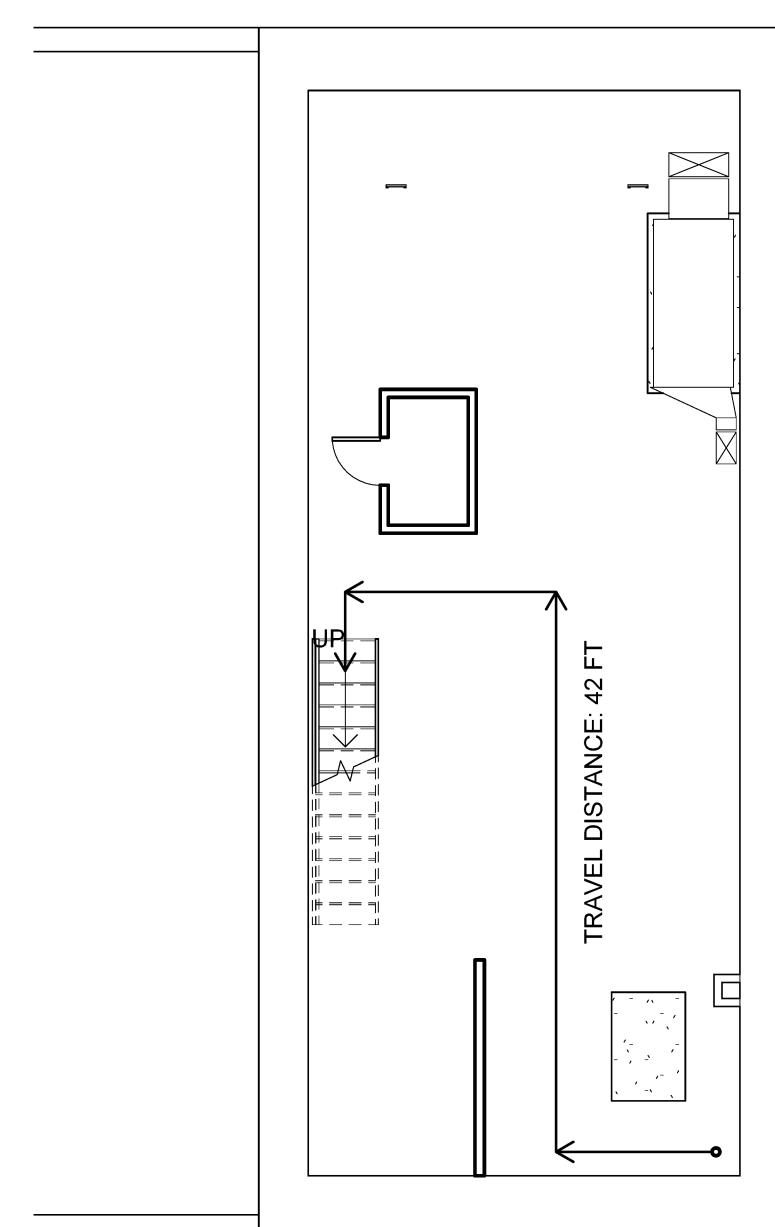
B1 THIRD FLOOR PLAN
SCALE: 1/8" = 1'-0"



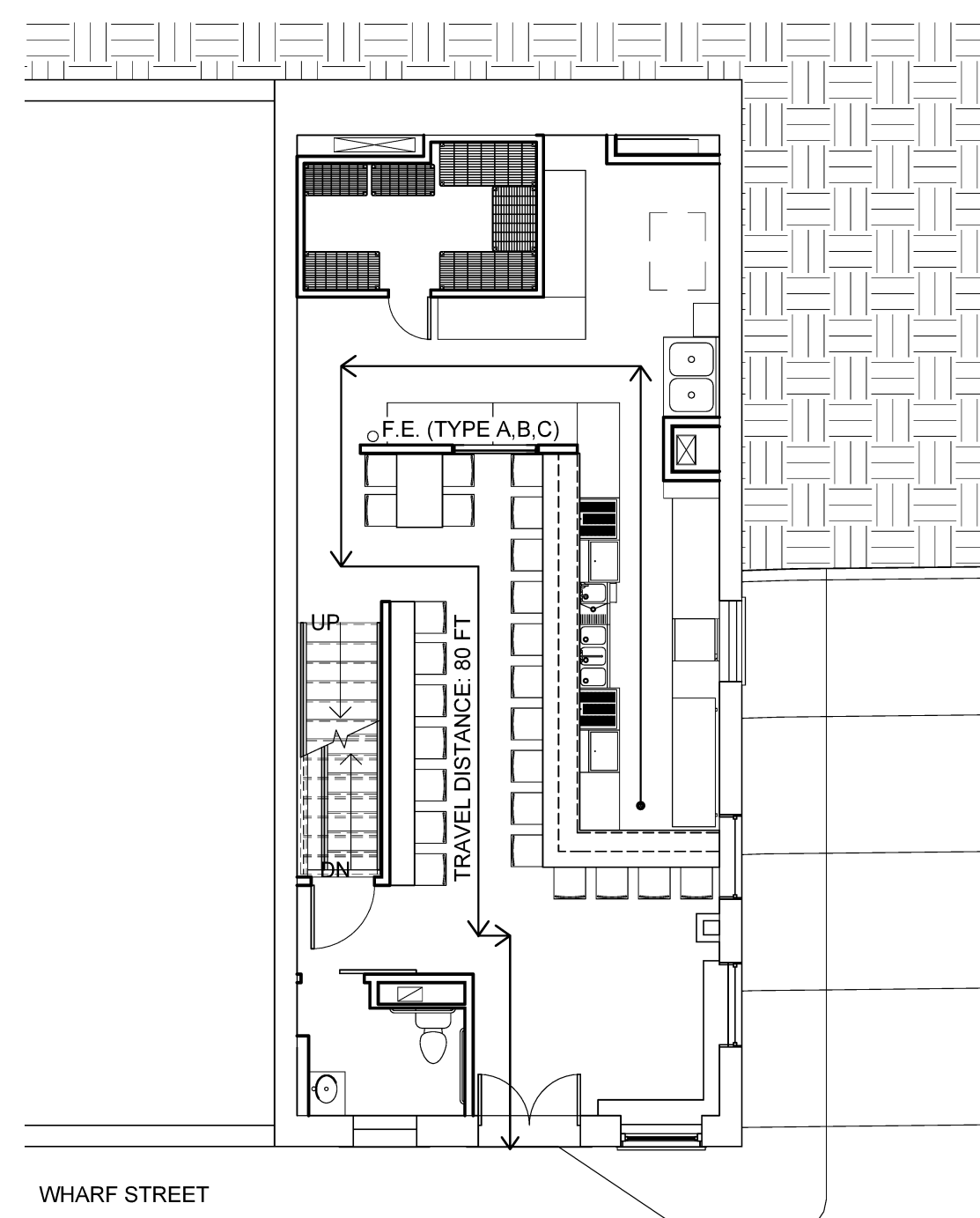
B2 FOURTH FLOOR PLAN
SCALE: 1/8" = 1'-0"



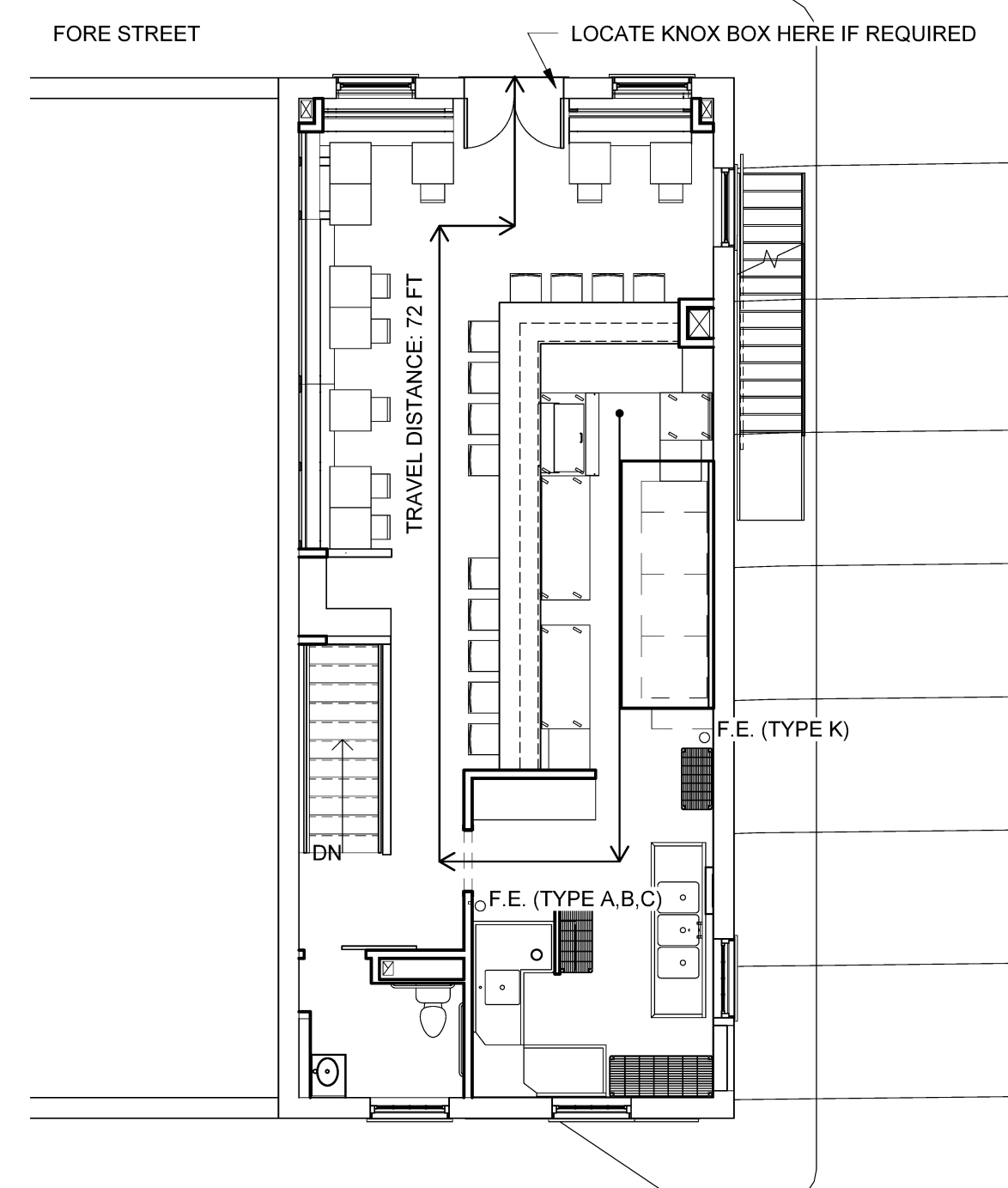
B3 FIFTH FLOOR LOFT PLAN
SCALE: 1/8" = 1'-0"



A1 BASEMENT FLOOR PLAN
SCALE: 1/8" = 1'-0"



A2 FIRST FLOOR PLAN
SCALE: 1/8" = 1'-0"



A3 SECOND FLOOR PLAN
SCALE: 1/8" = 1'-0"