

HARRIMAN

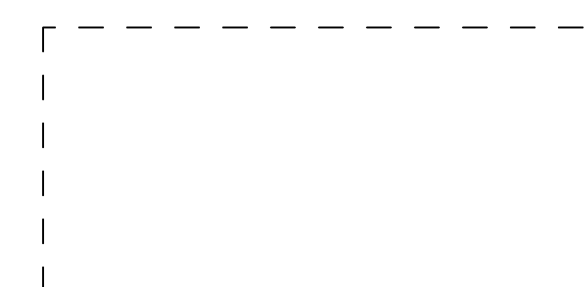
AUBURN PORTLAND MANCHESTER

GOULD RESAURANT

414 FORE STREET  
PORTLAND, ME 04101

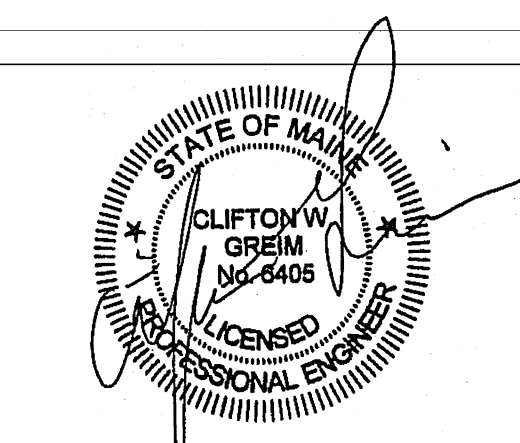
Harriman Project No. 12752

Key Plan Proj North



Issues and Revisions

Mark	Date	Description
	05-31-13	ISSUED FOR CONSTRUCTION

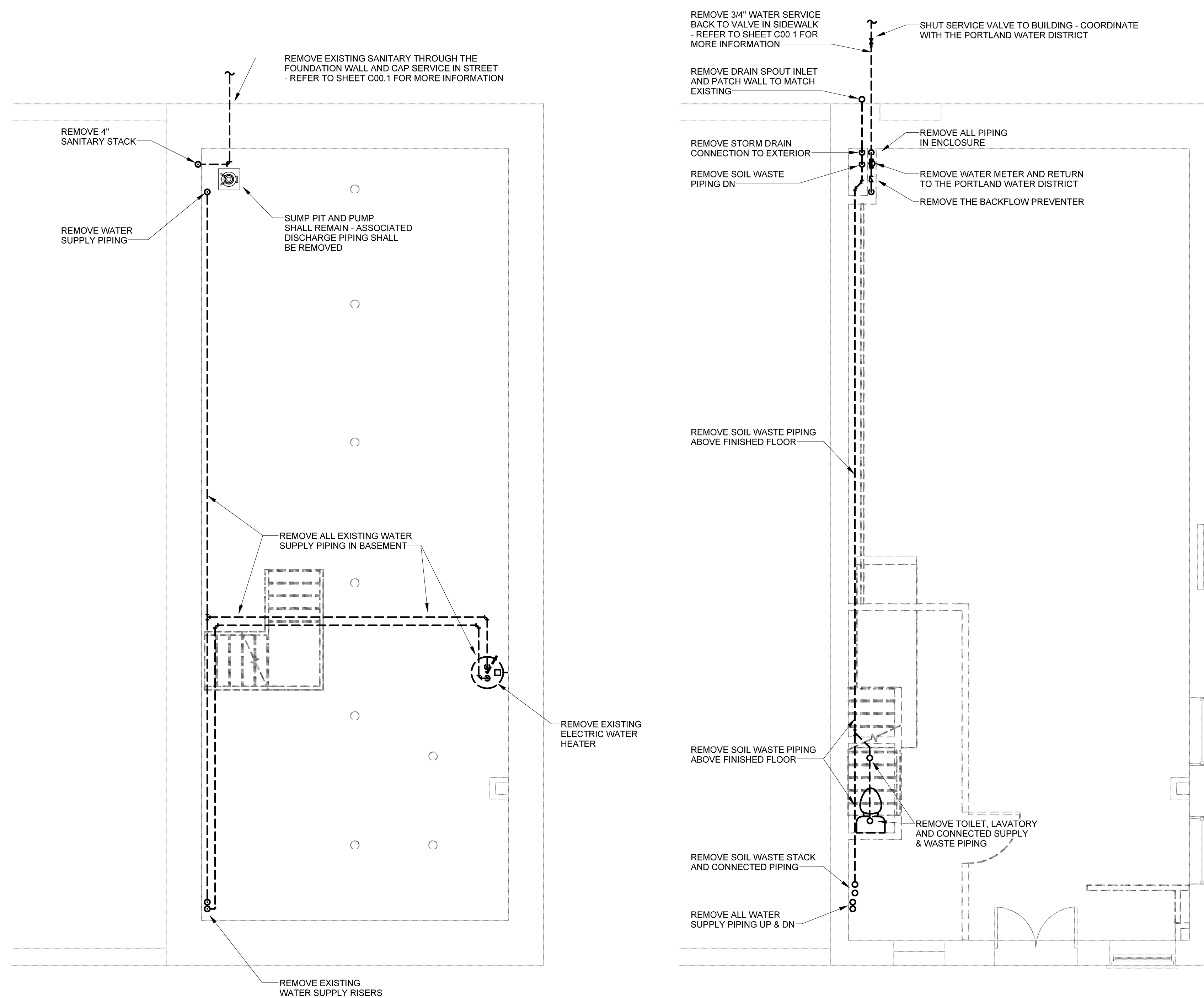


Drawing Scales	0 2' 4' 6'
1/4" = 1'-0"	1/4" = 1'-0"

PA / PE: CG	© 2013
Drawn By: ROM	Harriman Associates

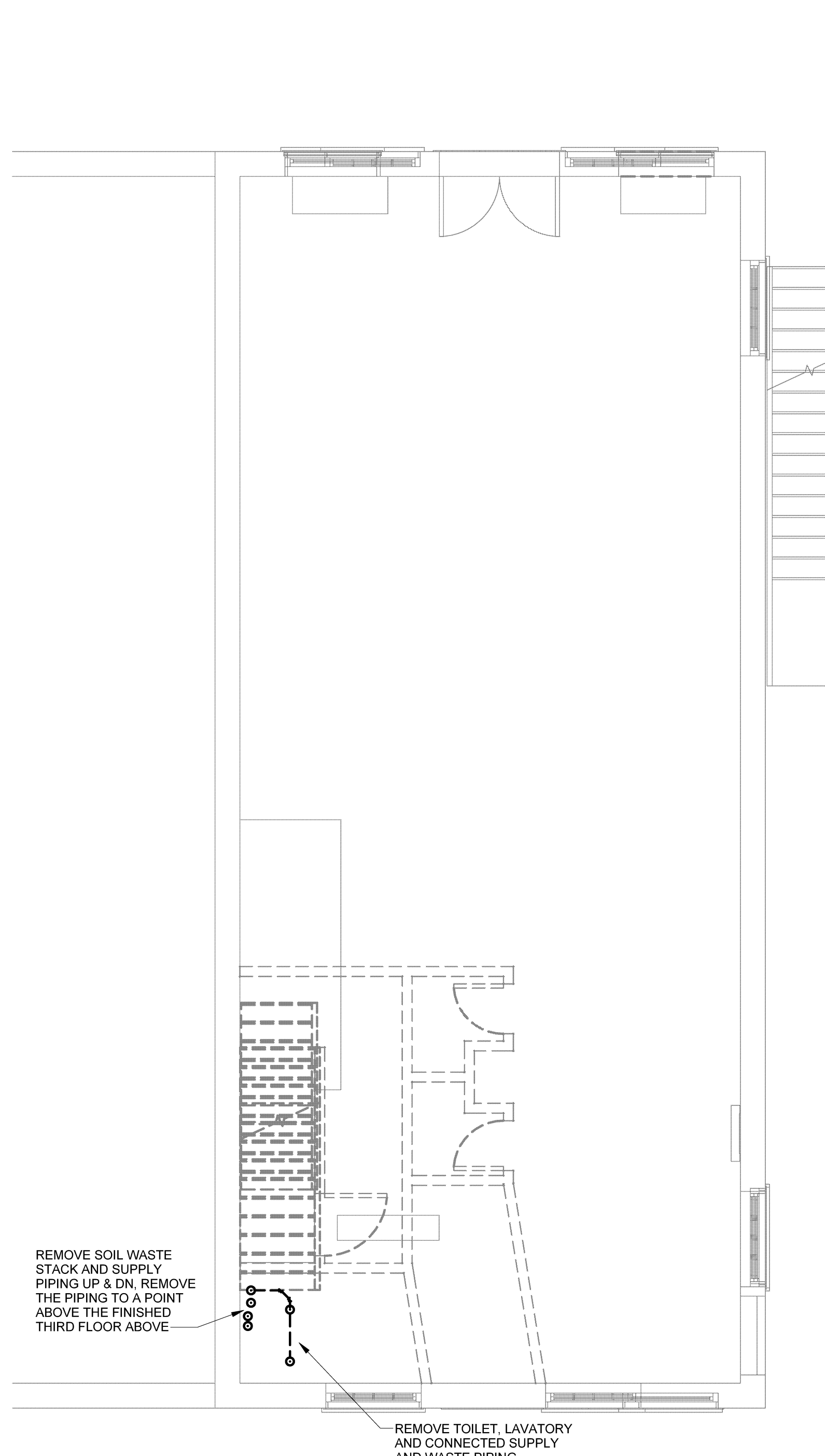
DEMOLITION PLANS  
PLUMBING

P05.1



1 BASEMENT FLOOR PLAN PLUMBING DEMOLITION  
SCALE: 1/4" = 1'-0"

2 FIRST FLOOR PLAN PLUMBING DEMOLITION  
SCALE: 1/4" = 1'-0"



3 SECOND FLOOR PLAN PLUMBING DEMOLITION  
SCALE: 1/4" = 1'-0"