

ROOM		ROOM FINISH SCHEDULE						COMMENTS
NUMBER	NAME	Floor Finish	Base Finish	WALL FINISH				
				NORTH	EAST	SOUTH	WEST	
A001	STORAGE	EXIST	RB	PT1	P1	P1	P1	
A101	BAR	EXIST*	WB1	PT3	-	EXIST	PT4/EXIST	*SAND AND CLEAR FINISH
A102	BACK BAR	QT	SB1	PT3	EXIST	-	-	
A103	PREP	QT	SB1	PT1	EXIST	PT3	EXIST	
A104	COOLER	QT	-	-	-	-	-	
A105	TOILET	CT1	CT2	PT2	PT2	PT2	PT2	
A106	STAIR	WD*	WB1	PT4	PT4	-	PT4	*RECYCLED TREAD, CLEAR FINISHED
A201	MAIN SEATING	EXIST*	WB1	EXIST	PT3	PT2	EXIST	*SAND AND CLEAR FINISH
A202	KITCHEN	QT	SB1	-	-	PT4	-	
A203	DISHWASHING	QT	SB1	SS/PT1	EXIST	EXIST	SS/PT1	
A204	TOILET	PT1	CT2	PT2	PT2	EXIST	EXIST	
A205	SERVERS STATION	EXIST*	WB1	PT4	-	PT4	EXIST	*SAND AND CLEAR FINISH

MATERIALS LEGEND			
Materials	Key Name	Manufacturer	Style/Color
CERAMIC TILE	CT1	AMERICAN OLEAN	AVENUE ONE - AU04 BROWNSTONE 8X24-NOTE 1
CERAMIC TILE BASE	CT2	AMERICAN OLEAN	AVENUE ONE - AU04 BROWNSTONE 8X24-NOTE 1
PAINT	P1	SHERWIN WILLIAMS	SW7001 MARSHMALLOW-NOTE 2
	P2	SHERWIN WILLIAMS	SW7047 PORPOISE-NOTE 2
	P3	SHERWIN WILLIAMS	SW6415 HEARTS OF PALM-NOTE 2
	P4	SHERWIN WILLIAMS	SW6514 RESPIRE-NOTE 2
QUARRY TILE	QT1	AMERICAN OLEAN	N56 SHADOW FLASH
STAINLESS STEEL BASE	SB1		4'-0" TALL IN DISHWASHING A203
SOLID SURFACE	SS1		
WOOD BASE - 6"	WB1		CLEAR FINISH

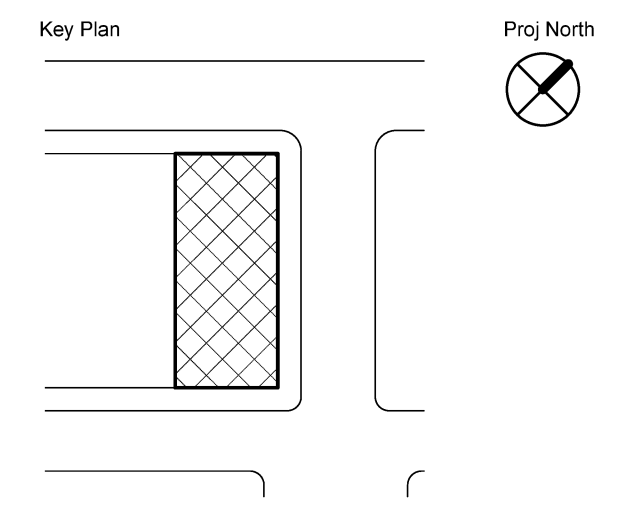
NOTE 1: 8X24 TILE TO BE INSTALLED IN ASHLAR PATTERN, OFFSET BY 1/3.  
NOTE 2: COLOR TO BE CONFIRMED WITH OWNER.



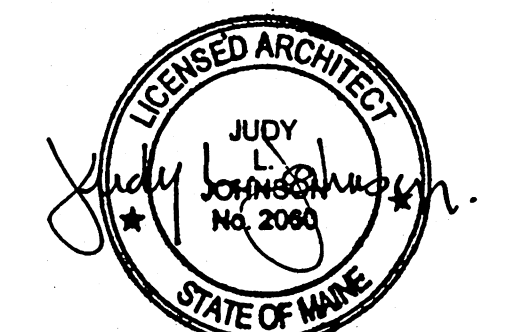
GOULD RESTAURANT

414 FORE STREET  
PORTLAND, ME 04101

Harriman Project No. 12752



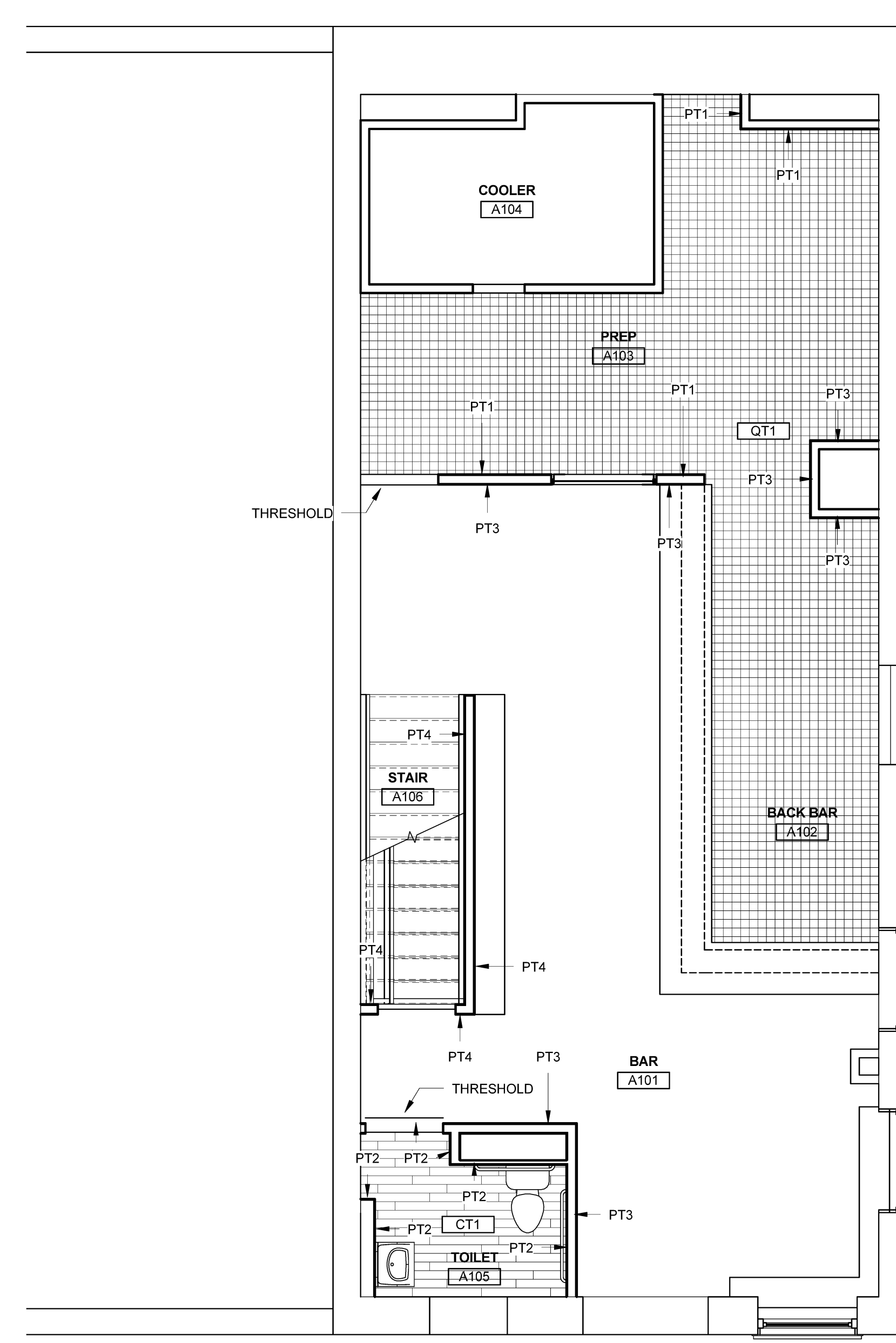
Issues and Revisions		
Mark	Date	Description
05-21-13	75% REVIEW	
05-31-13	ISSUED FOR CONSTRUCTION	



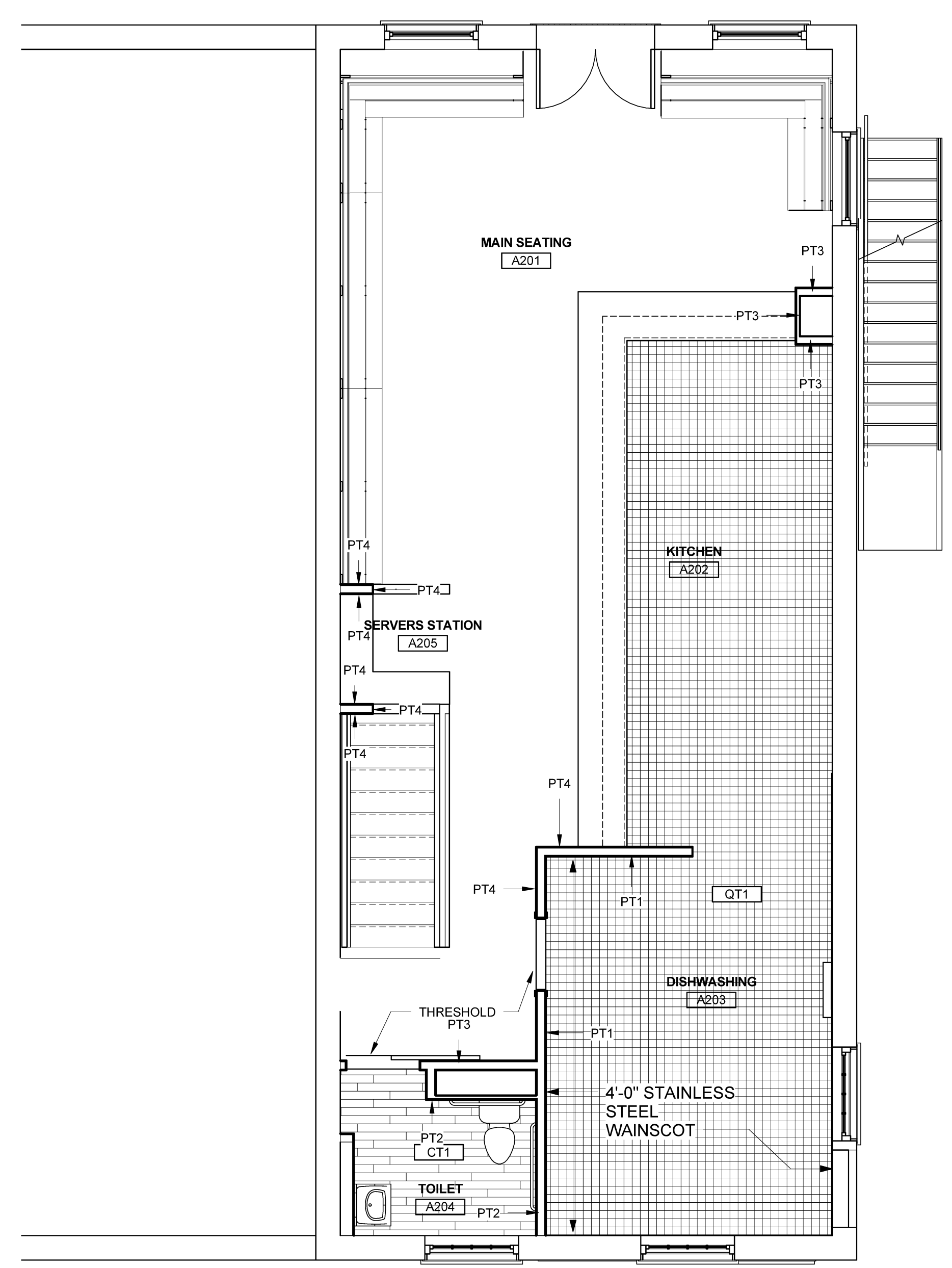
PA / PE: RBB © 2013  
Drawn By: CMP Harriman Associates

ROOM FINISH SCHEDULE AND FINISH PLAN

A71.1



A1 FIRST FLOOR FINISH PLAN  
SCALE: 1/4" = 1'-0"



A3 SECOND FLOOR FINISH PLAN  
SCALE: 1/4" = 1'-0"

Plot Date: 5/31/2013 2:55:00 PM