

PRODUCT

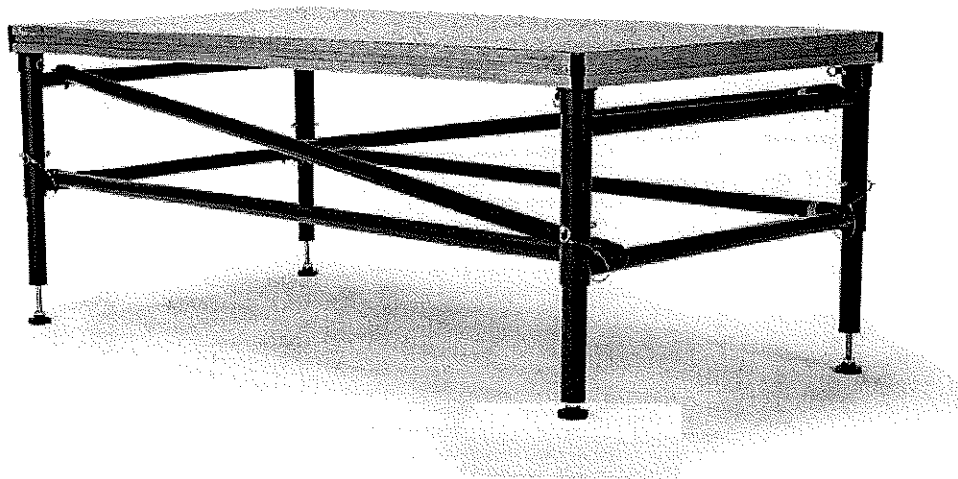
ME-1000 Support System

ITEM

Product Sheet

CATEGORY

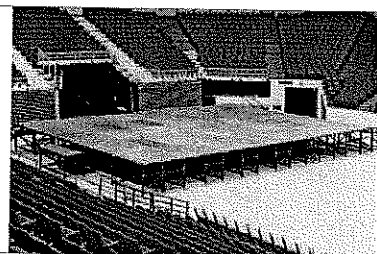
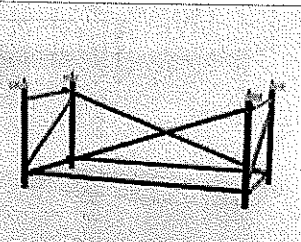
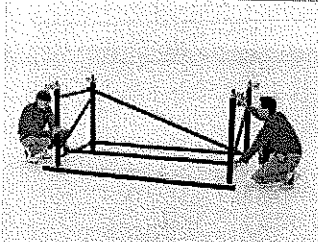
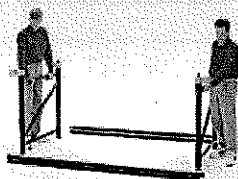
Major Events & Staging



This sturdy bridging deck system uses fewer supports to save you time and labor.

Solid, yet simple. The ME-1000 Support System is the original "bridging deck" performance staging, which uses fewer supports. This allows you to slash setup and leveling time, while giving your users a sturdy, rock-solid performance platform. Each column of this stage understructure supports up to four adjoining decks. The tapered locator

nodes at the top of each column align the decks during assembly and automatically connect stage sections without extra parts or tools. Its compact storage size saves room, and its modular design gives you the flexibility to configure your staging in various sizes and shapes



→ Setup the ME-1000 support assembly quickly and easily, without the use of tools.



Set up in minutes



Sturdy, with no tools required



Unsurpassed customer service

TOLL FREE 800.438.4499

ONLINE www.stageright.com



STAGERIGHT

ME-1000 Support System

Features and Benefits

Stores Compactly

- Use minimal storage space (for example, supports for a 40' x 60' stage store in 64 square feet).

Decks Bridge Between Support Assemblies

- Save time with fewer supports to set up and tear down.
- Greatly reduce leveling time with 75% fewer elements in contact with the floor.
- Minimize your initial investment and storage space requirements because fewer supports are required.
- Utilize convenient, unobstructed storage space beneath the stage.

Retractable Locator Assembly

- Save setup time by connecting one to four Deck corners at a single support column (no matter what the stage configuration).
- Save setup time because the Decks automatically align and the stage sections are automatically connected as the Decks fasten on the conical locator nodes.
- Eliminate time spent finding and assembling loose parts.

Modular Assemblies

- Configure staging various sizes and shapes for diverse events.
- Assemble platforms to function in unusual situations throughout the facility.

Snap-Lock Braces

- Save time as horizontal and diagonal braces attach and detach quickly and without tools.
- Perform on stable, wobble-free platform.

Aluminum Construction

- Handle the lighter support system more easily than a steel system.
- Reduce maintenance costs as the tough, air-craft-alloy composition and the scratch-resistant, baked on finish resist damage.

Quick-Set Height Selector

- Select stage heights in 2" increments and reference nominal heights quickly on inner legs.
- Ensure maximum security with large, 5/8" diameter height adjustment pin.

Adjustable Screw Feet

- Compensate for uneven floors with five inches of easy, line-adjustment leveling.
- Save maintenance costs because tough, 3/4" Acme-thread screw resists damage (compared to typical "V" threads).
- Protect floor surfaces with sure-grip 2 7/8" diameter injection grade urethane pads.

Technical Specifications

Function Staging support system shall be easy to set up and store and shall provide a stable, wobble-free understructure for a wide variety of events and platform needs.

Storage Supports shall store compactly (for example, supports for a 40' x 60' stage shall store in 64 square feet).

Setup Support system shall be assembled without tools by as few as two people.

Locator Nodes Conical nodes on retractable locator assemblies shall guide one, two, three or four StageRight Deck(s) into location and proper alignment on a single support column. Without tools, clamps or separate processes, Decks shall fasten in place and stage sections shall interlock.

Bridging Alternating sections of staging (both front-to-back and side-to-side) shall be composed of Decks that suspend, or "bridge", between support assemblies.

Adjustable Height Height shall adjust in increments of 2" without tools. Adjustments shall be executed from a standing position by raising or lowering the support's inner column.

Construction Vertical columns shall be 2 1/2" IPS aluminum pipe. Telescopic inner legs shall be 2" IPS aluminum pipe. Horizontal and diagonal braces shall be 2" OD, aluminum hollow bar. Horizontal and diagonal braces shall attach to frame by self-locking hooks that encircle nearly 70% of tube and require manual release (see illustration at right). Retractable locator assembly bodies shall be made of 6061-T6 aluminum extrusion. The locator nodes shall have a 1" base diameter and be made of high-strength nylon, except the center node (permanently mounted to the inner leg) shall be made of D11215 steel. Height shall adjust in increments of 2" without tools. A screw foot at the base of each column shall provide a 5" range of fine adjustment leveling. Each screw foot shall have a diameter of no less than 3/4" and have zinc-plated Acme threads. The bottom of the foot shall be molded urethane no less than 2 7/8" in diameter.

Options Support assemblies shall have an adjustable height range of: 24"-36," 32"-48," 36"-56," 48"-78," or 78"-108" (Arena Style only). Other sizes by special order.

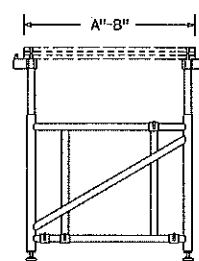
Performance Certified, uniformly distributed live-load capacity of 4000 pounds per 4' x 8' section (125 pounds per square foot).

Patents #4,638,604, #4,845,915, #4,843,792

Retracted Foot Extended Foot

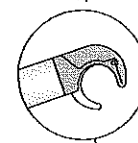


End View

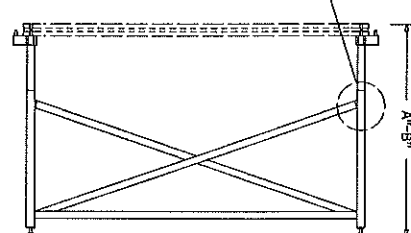


Self-Locking Hooks

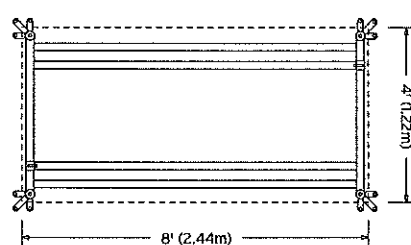
Horizontal and diagonal braces shall attach to frame by self-locking hooks that encircle nearly 70% of tube and require manual release.



Side View

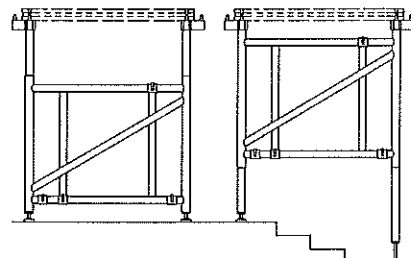


Top View



Arena Style
Arena Style for level environments such as auditoriums and concert halls.

All-Terrain Style
All-Terrain Style for all variable contours or uneven surfaces.



*Ordering Information

ME-1000AS Support System, Arena Style, (Decks Sold Separately).

PARTS #	DESCRIPTION	W.T. (LB.)	SHIPPING DIM.
314210	24"-36" adjustable height	72	110" x 48" x 6"
314212	32"-48" adjustable height	79	110" x 48" x 6"
314215	36"-56" adjustable height	86	110" x 48" x 6"
314220	48"-78" adjustable height	108	110" x 48" x 6"
314225	72"-108" adjustable height	140	142" x 48" x 6"

ME-1000AT Support System, All-Terrain Style, (Decks Sold Separately).

PARTS #	DESCRIPTION	W.T. (LB.)	SHIPPING DIM.
314410	24"-36" adjustable height	72	110" x 48" x 6"
314412	32"-48" adjustable height	79	110" x 48" x 6"
314415	36"-56" adjustable height	86	110" x 48" x 6"
314420	48"-78" adjustable height	108	110" x 48" x 6"

*Custom sizes are available upon request

