


PLANS PREPARED FOR:



U S Cellular
We connect with you
10 Corporate Drive, Suite 210, Bedford, NH 03110

PROJECT INFORMATION

853417 - PORTLAND DT
ONE CITY CENTER
PORTLAND, ME 04101
(CUMBERLAND COUNTY)


PLANS PREPARED BY:



amec
511 Congress Street Suite 200, Portland ME 04101
P: (207) 775-5401 F: (207) 772-4762 www.amec.com

PROJECT COORDINATION & MANAGEMENT:

KJK Wireless, LLC
127 Ridge Road, Nashua, NH 03062
Phone: (603) 888-8974



REV	DATE	ISSUED FOR
1	06/05/13	ISSUED FOR CONSTRUCTION

PROJECT NO: 3618138235

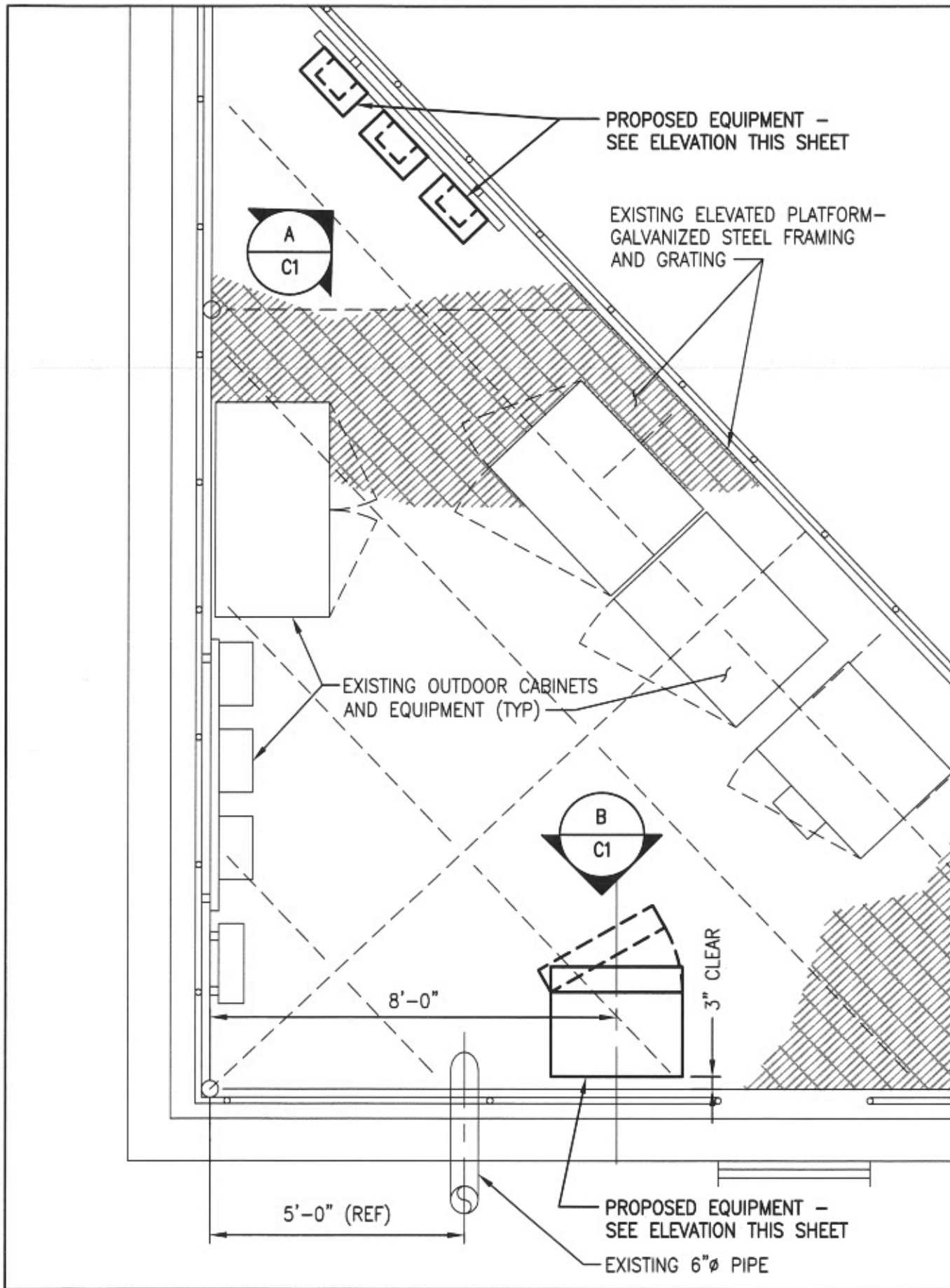
DRAWN BY: EJG

RELEASED BY: MSD

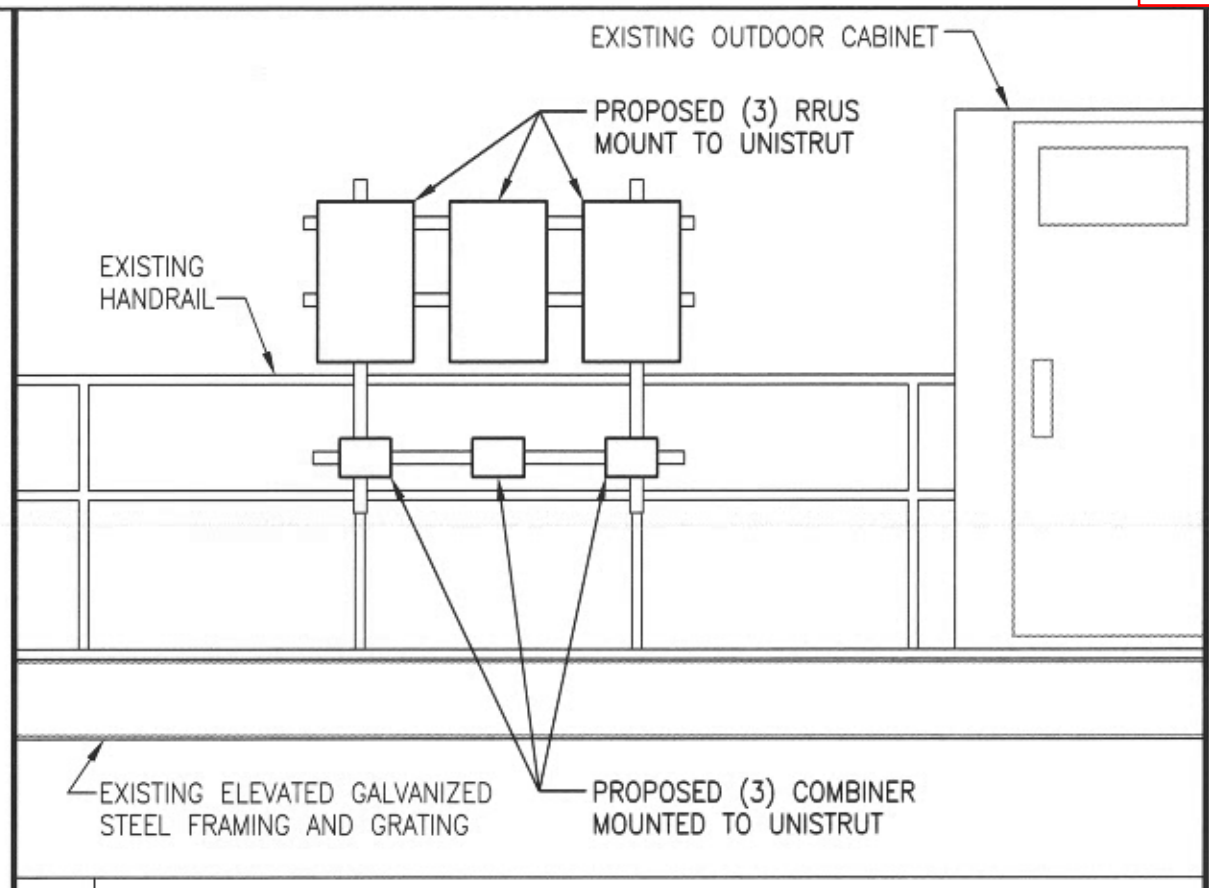
SHEET TITLE

**EQUIPMENT LAYOUT
PLAN AND ELEVATIONS**

SHEET NUMBER	REVISION:
C-1	0

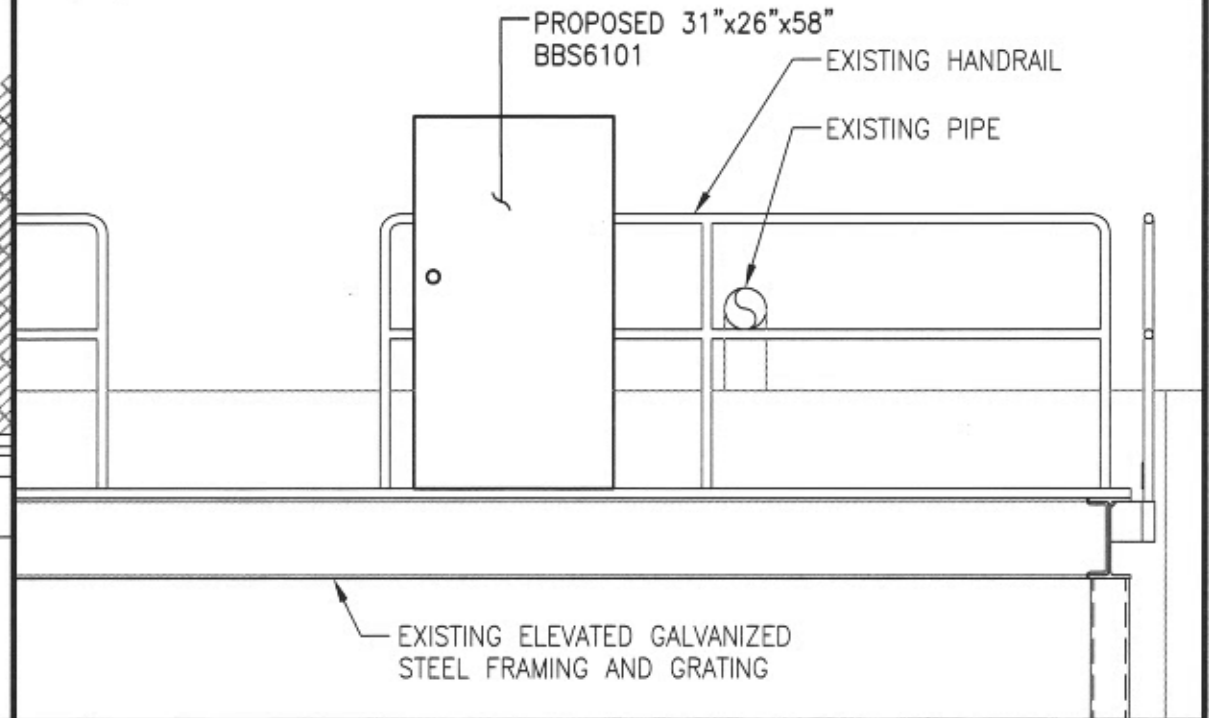


EQUIPMENT LAYOUT
SCALE: N.T.S.



A EQUIPMENT ELEVATION
SCALE: N.T.S.

NOTE: CONTRACTOR PLEASE REFER TO STRUCTURAL ANALYSIS VERIFICATION LETTER PROVIDED BY AMEC ENVIRONMENT & INFRASTRUCTURE, INC. DATED 06/05/13 FOR DETAILS.



B CABINET ELEVATION FRONT
SCALE: N.T.S.