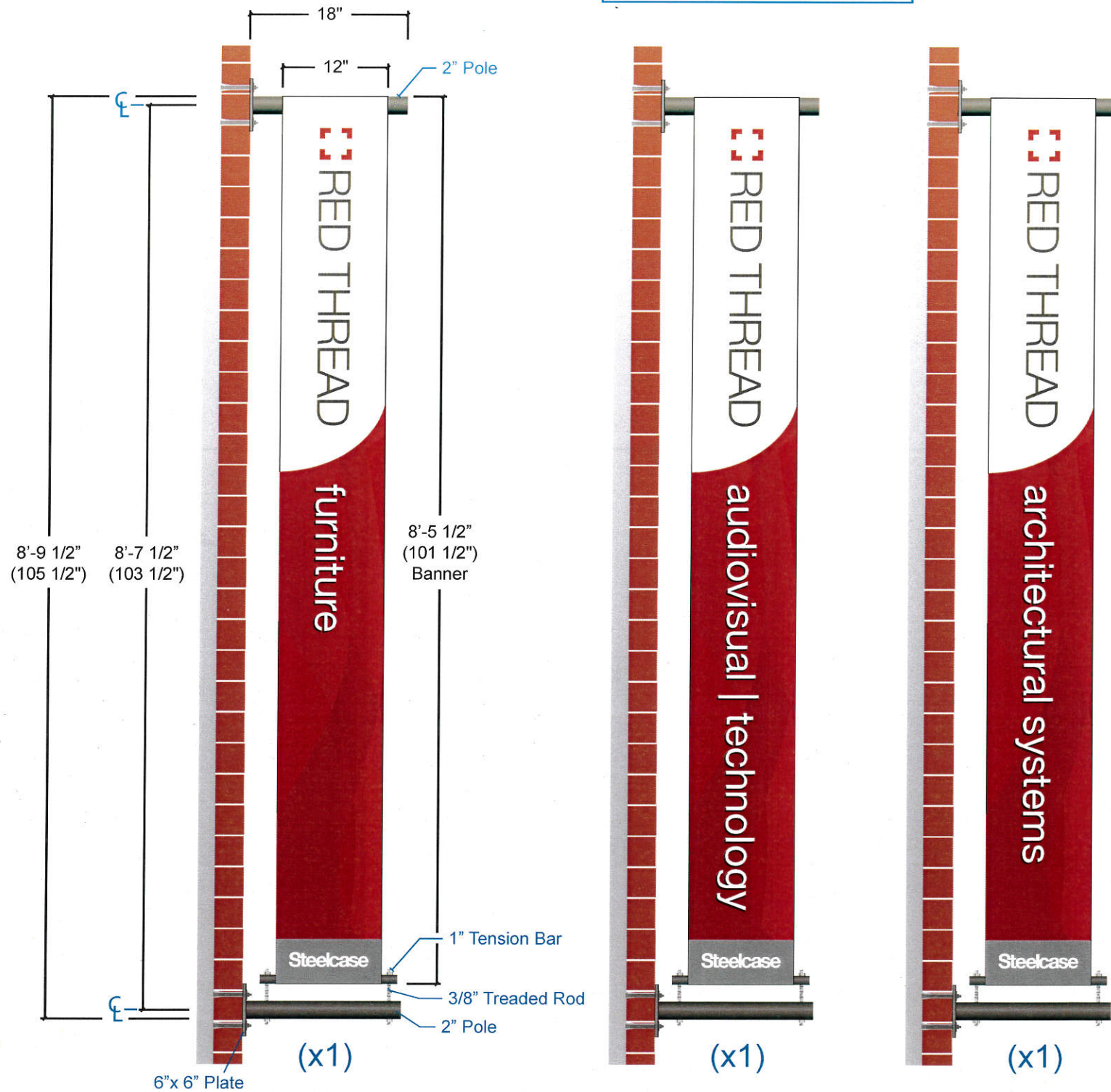
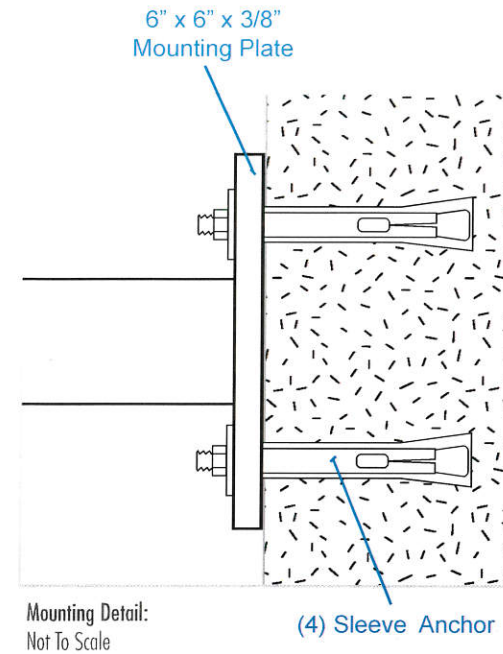


Banners

Same graphics on both sides.



E1 Elevation: #5324.1 (Qty 3) Banner
Scale: 3/4" = 1'



Description:

- (Qty 3) Flag mounted banner, double-sided
- Digitally printed at 360 dpi on 13 oz. banner sewn back to back with hems and pole pockets on top and bottom.
- Bracket with tension bar system constructed from 2" round tube, 1" round steel tube, 6"x 6" x 3/8" mounting plates.

Logo:

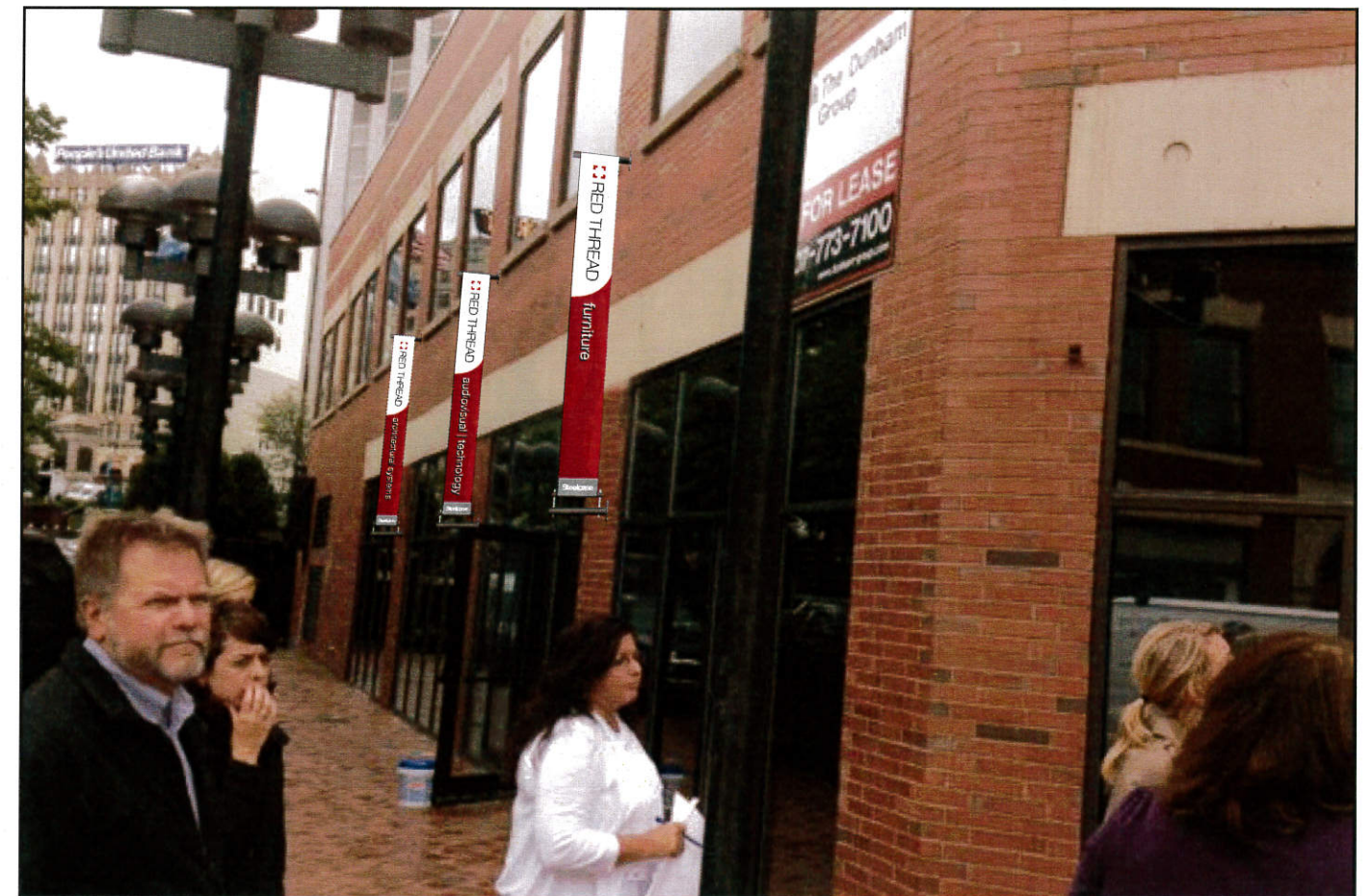
Artwork On File

Colors:

- Banners: - Digitally printed at 360 dpi on White banner fabric
- Graphics: - Converted PMS Uncoated to PMS Coated
- PMS 1797c (red) / PMS 440c (gray) / PMS 424c (Steelcase gray)
- Gradient CMYK (red) C-0 / M-100 / Y-99 / K-15 (60% Opacity)
- Bracket: - paint Black

Installation:

By Viewpoint.



Proposed:
Not To Scale

Job: Red Thread	Account Manager: Bart Steele	Date: 12.23.13 R.O D2.0	Revisions: 12.24.13 R.O D1.0	Revisions:
Location: One City Center - Portland, ME	File: RedThread_PortME_Banners_1b.ai	Designer: Mathew Hoard		

THIS PROPOSAL DRAWING CONTAINS ORIGINAL ELEMENTS
CREATED BY VIEWPOINT SIGN AND AWNING. ALL RIGHTS RESERVED.
UNAUTHORIZED DUPLICATION OR REPRODUCTION IS PROHIBITED.

ViewPoint SIGN AND AWNING 1.508.393.8200
FAX 1.508.393.4244

Customer Approval _____ Acct. Manager Approval _____ Production Approval _____