

ENCLOSURE & HAZARD NOTES

PROTECTED VOLUME: 1,157 CU FT
 HAZARD: CLASS C ENERGIZED ELECTRICAL EQUIPMENT
 NOVEC 1230 DESIGN CONCENTRATION: 4.7%
 HVAC: DEDICATED A/C UNIT (CONTINUAL MIXING)
 IT SHUTDOWN: TBD

NOVEC 1230 SEQUENCE OF OPERATION

I. ACTIVATION OF THE FIRST SMOKE DETECTOR WILL CAUSE THE FOLLOWING TO OCCUR:

1. ALARMED DETECTOR'S RED STATUS LED WILL LIGHT
2. ALARMED DETECTOR'S ZONE WILL BE INDICATED ON THE SUPPRESSION CONTROL PANEL
3. AN ALARM SIGNAL WILL BE TRANSMITTED TO THE BUILDING FIRE ALARM SYSTEM
4. HORN/STROBE INSIDE THE PROTECTED SPACE WILL OPERATE (SLOW PULSE)
5. NOVEC 1230 SYSTEM WILL BE PLACED IN A PRE ALARM CONDITION

II. ACTIVATION OF THE SECOND SMOKE DETECTOR WILL CAUSE THE FOLLOWING TO OCCUR:

1. ALARMED DETECTOR'S RED STATUS LED WILL LIGHT
2. ALARMED DETECTOR'S ZONE WILL BE INDICATED ON THE SUPPRESSION CONTROL PANEL
3. HORN/STROBE INSIDE THE PROTECTED SPACE WILL OPERATE (FAST PULSE)
4. 30 SECOND PRE-DISCHARGE TIME DELAY WILL BEGIN
- * UPON EXPIRATION OF THE TIME DELAY THE FOLLOWING WILL OCCUR:
 - A. NOVEC 1230 SYSTEM WILL DISCHARGE INTO THE ROOM
 - B. DISCHARGE STROBE LOCATED OUTSIDE OF THE PROTECTED SPACE WILL OPERATE
 - C. SELECTED EQUIPMENT WILL BE SHUTDOWN

III. ACTIVATION OF THE MANUAL RELEASE STATION WILL IMMEDIATELY DISCHARGE THE NOVEC 1230 SYSTEM BYPASSING THE 30 SECOND DELAY. AN ALARM SIGNAL WILL BE TRANSMITTED TO THE BUILDING FIRE ALARM SYSTEM.

NOTE

1. AN ABORT BUTTON CAN BE PUSHED AND HELD TO PREVENT THE NOVEC 1230 SYSTEM FROM DISCHARGING WHEN IT IS IN THE COUNTDOWN SEQUENCE. WHEN HELD THE TIMER WILL COUNTDOWN TO 10 SECONDS UNTIL RELEASE AND HOLD. WHILE THE ABORT IS HELD THE PANEL CAN BE RESET TO START THE SEQUENCE OVER. IF THE ABORT BUTTON IS RELEASED BEFORE THE PANEL IS RESET THE TIME DELAY THEN CONTINUES AT 10 SECONDS. ACTIVATION OF THE MANUAL RELEASE WILL OVERRIDE AN ABORT. LED'S ON THE CONTROL PANEL WILL INDICATE THE STATUS OF ANY ABORT
2. THE KEY DISABLE SWITCH CAN BE OPERATED TO DISABLE THE NOVEC 1230 DISCHARGE CIRCUIT FOR MAINTENANCE. OPERATION OF THE SWITCH WILL CAUSE A TROUBLE CONDITION TO OCCUR ON THE CONTROL PANEL AND A TROUBLE SIGNAL WILL BE SENT TO THE BUILDING FIRE ALARM SYSTEM.

PROGRAMMING NOTES

1. REFER TO AEGIS OPERATION & MAINTENANCE MANUAL FOR DETAILED INSTRUCTIONS ON PROGRAMMING AND CONFIGURATION
2. RELEASING CIRCUIT #1 SHALL OPERATE UPON THE CROSS ZONED OPERATION OF DETECTORS IN SERVER ROOM. RELEASING CKT #2 SHALL OPERATE UPON CROSS ZONE OF DETECTORS IN SERVER ROOM OR SINGLE ACTIVATION OF DETECTOR IN ELECTRIC ROOM. VERIFY DISCHARGE COUNTDOWN IS SET TO 30 SECONDS IN THE CONFIGURATION.
3. MANUAL RELEASE SHALL HAVE NO TIME DELAY
4. RELAY #1, #2 & #3 ARE PROGRAMMABLE. RELAY #1 SHALL BE CONFIGURED FOR ALARM AND RELAY #2 FOR SUPERVISORY. RELAY #4 (TB9) IS NON USER PROGRAMMABLE AND USED TO TRANSMIT A TROUBLE CONDITION. TIE THESE THREE OUTPUTS TO BUILDING FIRE ALARM PANEL.

SYMBOL LEGEND			
ITEM NO.	SYMBOL	QTY. TOTAL	DESCRIPTION
1	○	8	STANDARD BASE (DS-SB) - OCTAGON BOX
2	Ⓢ	8	SMOKE DETECTOR (DS-PS) - MOUNTS ON DS-SB
3	FSCPP	1	KIDDE RELEASING PANEL (ARIES)
4	Ⓢ	1	AGENT RELEASE HORN/STROBE (HSR-A) - 4" SQUARE OR SINGLE GANG
5	Ⓢ	1	AGENT RELEASE STROBE (STR-A) - 4" SQUARE OR SINGLE GANG
6		1	DISCHARGE PRESSURE SWITCH (81-486536-000)
7	DS	1	DISCONNECT SWITCH (76-60000-200) - 4" SQUARE OR SURFACE BACK BOX
8	CA	1	MANUAL RELEASE STATION (84-330002-001) - SINGLE GANG
9	A	1	ABORT STATION (84-878752-010) - DOUBLE GANG OR SURFACE BACK BOX
10	MM	9	MONITOR MODULE N.O. (70-407008-001)
11	⊗	1	3/4" 180 ECS NOVEC 1230 DISCHARGE NOZZLE (45-194614-164)
12		1	125 LB CYLINDER FILLED WITH 75 LBS NOVEC 1230 (45-100125-001)
13		1	CYLINDER STRAP (06-235317-001)
14		1	ELECTRIC CONTROL HEAD (85-486500-010)
15		1	IN LINE RELEASING DEVICE (06-220023-001)
16		1	EOL RESISTOR - 5.1K OHM
17		1	SIGN - "NOVEC 1230 EXTINGUISHING SYSTEM... DO NOT ENTER..."
18		1	SIGN - "OPERATION OF MANUAL STATION..."
19		1	SIGN - "THIS AREA IS PROTECTED BY NOVEC 1230 EXTINGUISHING SYSTEM..."
20		1	SIGN - "NOVEC 1230 EXTINGUISHING SYSTEM... IMMEDIATELY EXIT..."
21		1	SIGN - "NOVEC 1230 EXTINGUISHING ABORT STATION - PUSH AND HOLD"

NOVEC 1230 PIPING NOTES

1. ALL DIMENSIONS ARE TO BE FIELD CHECKED. IF PIPING SHOWN INTERFERES WITH ANY OBJECT, DESIGN APPROVAL FOR CHANGES SHALL BE SECURED PRIOR TO INSTALLATION

2. MATERIALS:
- A. PIPING - ACCEPTABLE PER NFPA 2001 (2012 EDITION) PARA. 4.2.1.1
 - SCHEDULE 40 BLACK OR GALVANIZED STEEL PIPE CONFORMING TO ASTM-53
 - SEAMLESS OR ERW GRADE A OR B ASTM A-106 GRADE A, B, OR C
 - DUAL STENCILED A120/A53 CONFORMING TO ASTM A-53 FURNACED WELD CLASS F
 - SCHEDULE 40 MAY BE USED:
 - ON THREADED CONNECTIONS 1/4" - 3" NPS
 - ON GROOVED CONNECTIONS 1/4" - 3" NPS
 - ON WELDED OR ROLLED GROOVE CONNECTIONS (1/4" - 6" NPS)
 - NON ACCEPTABLE: SEE NFPA 2001 (2012 EDITION) PARA 4.2.1.2
 - ASTM A-120 BUTT WELDED OR STEEL PIPE AND ORDINARY CAST IRON PIPE SHALL NOT BE USED

- B. FITTINGS - SEE NFPA 2001 (2012 EDITION) PARA 4.2.3.1
 - MALLEABLE IRON 300 LB. CLASS FITTINGS SHALL BE USED UP TO AND INCLUDING 3" IPS & 1,000 LB. DUCTILE IRON OR FORGED STEEL FITTINGS SHALL BE USED ON 4" OR LARGER SIZES.
 - VICTAULIC GROOVED FITTINGS ARE ACCEPTABLE
 - ALL REDUCING FITTINGS MUST BE CONCENTRIC REDUCERS
 - NON ACCEPTABLE: 150 LB. CLASS AND ORDINARY CAST IRON FITTINGS SHALL NOT BE USED

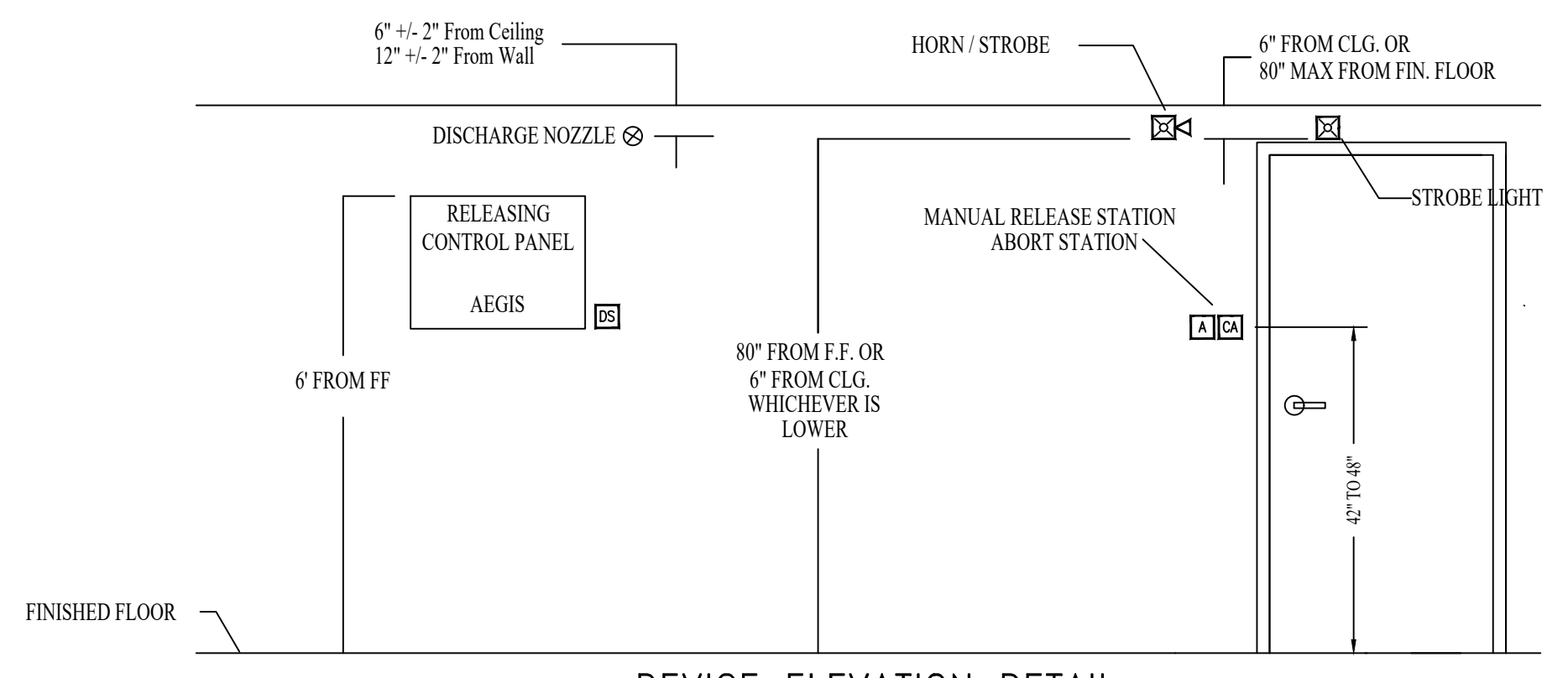
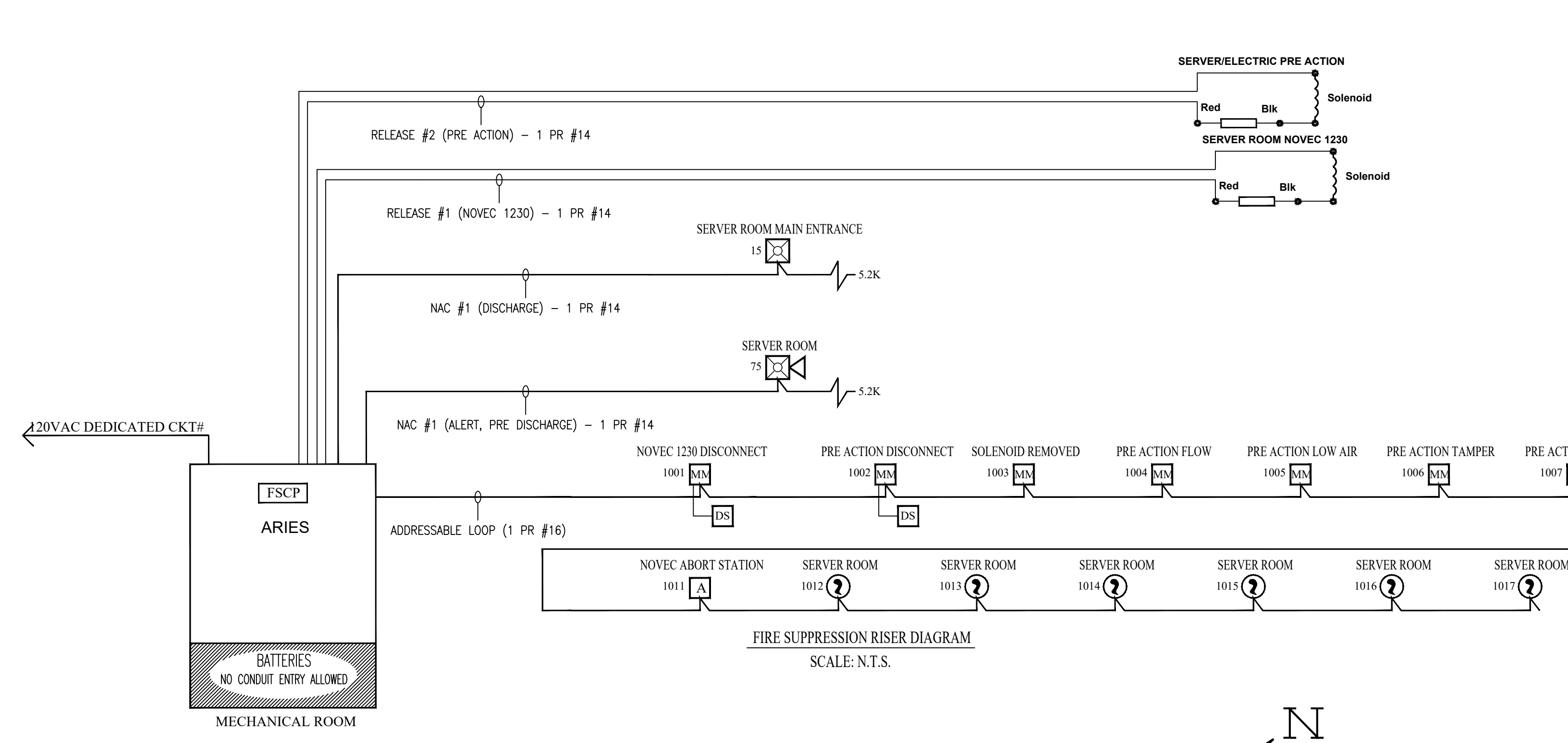
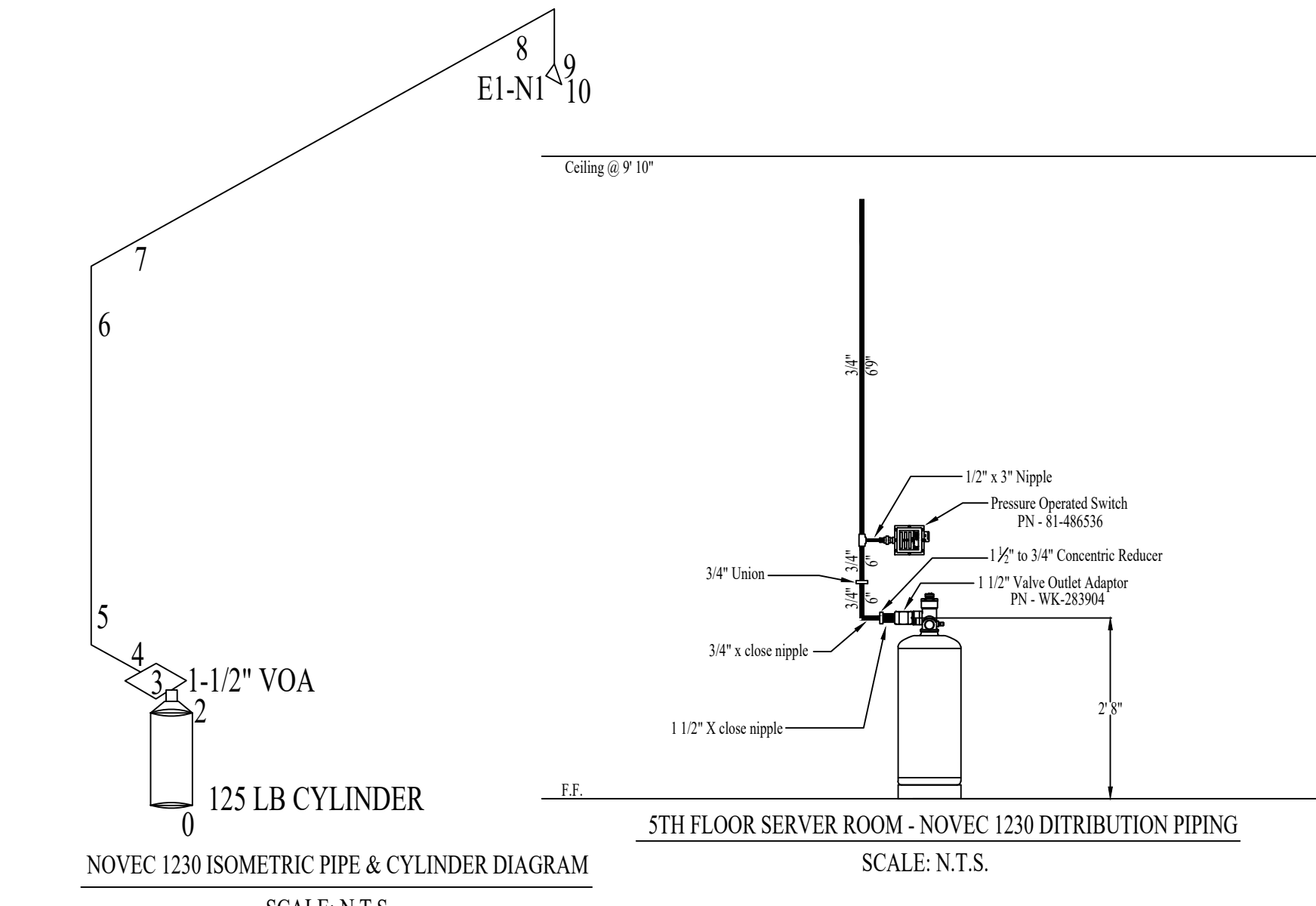
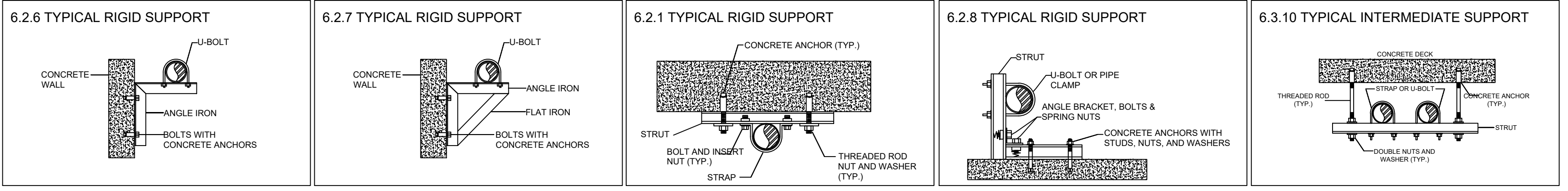
- C. HANGARS
 - HANGARS SHALL BE UL LISTED, AND RIGIDLY SUPPORTED, CLEVIS HANGARS NOT ALLOWED
 - HANGARS SHOULD BE INSTALLED BETWEEN FITTINGS WHEN FITTINGS MORE THAN 2' APART
 - HANGAR SHOULD BE INSTALLED A MAXIMUM OF 1' FROM NOZZLE(S)
 - THE MAX SPACING BETWEEN HANGARS SHALL NOT EXCEED THOSE LISTED IN THE TABLE BELOW:

PIPE SIZE IN NPT	MAX SPACING BETWEEN HANGARS
1/4"	4 FT
1/2"	6 FT
3/4"	8 FT
1"	12 FT
1 1/4"	12 FT
1 1/2" OR LARGER	15 FT

3. PIPE IS TO BE REAMED, BLOWN CLEAR, AND SWABBED WITH APPROPRIATE SOLVENT TO REMOVE MILL VARNISH AND CUTTING OIL BEFORE ASSEMBLY
4. TEFLON PIPE TAPE IS THE ONLY ACCEPTABLE PIPE SEALANT AND MUST BE APPLIED TO MALE THREADS ONLY. PIPE JOINT COMPOUND SHALL NOT BE USED
5. PIPING SHALL BE PRESSURE TESTED IN ACCORDANCE WITH NFPA 2001 (2012 EDITION) PARA 7-7.2.2.12 "PIPING SHALL BE PNEUMATICALLY TESTED IN A CLOSED CIRCUIT FOR A PERIOD OF 10 MINUTES. THE PRESSURE DROP SHALL NOT EXCEED 20% OF THE TEST PRESSURE"

IMPORTANT NOTE
 EASTERN FIRE PROTECTION IS NOT RESPONSIBLE FOR THE LOSS OF NOVEC 1230 FIRE EXTINGUISHING AGENT DUE TO LEAKS IN THE PROTECTED AREA. PRIOR TO ACCEPTANCE, ALL HOLES AND CRACKS SHOULD BE SEALED. ANY FLOOR DRAINS SHOULD BE CHECKED FOR TIGHTNESS. EMPTY CONDUITS MUST BE SEALED AND ALL DUCTS & DAMPERS SHOULD BE FIRE/SMOKE RATED.

	A	B	C	D	E	F	G	H	I	J	K	L	M	N	O	P	Q
1 SERVER ROOM SMOKE DETECTOR (1ST ACTIVATION)	X																
2 SERVER ROOM SMOKE DETECTOR (2ND ACTIVATION)	X			X	X			X					X	X			
3 ELECTRICAL ROOM SMOKE DETECTOR	X		X	X			X									X	X
4 MANUAL RELEASE STATION	X		X	X			X								X	X	X
5 ABORT STATION			X	X			X		X								
6 SOLENOID REMOVED			X	X			X		X								
7 DISCONNECT SWITCH IN BYPASS		X	X	X			X	X	X								
8 PRE ACTION FLOW	X		X	X			X										
9 PRE ACTION LOW AIR			X	X			X		X								
10 PRE ACTION TAMPERS			X	X			X		X								
11 EXPIRATION OF TIME DELAY				X										X	X	X	
12 OPEN CIRCUIT			X	X			X		X								
13 SHORT CIRCUIT		X	X	X			X		X								
14 GROUND FAULT		X	X	X			X		X								
15 LOSS OF AC POWER		X	X	X			X		X								



GENERAL NOTES	DATE	REVISIONS	REQUIRED APPROVALS
			OWNER STATE FIRE MARSHAL LOCAL FIRE DEPARTMENT
			DRAWN BY CRM
			CHECKED BY BWB
			CONTRACTOR LICENSE #

AVANGRID
OFFICE FIT UP
 ONE CITY CENTER, 5TH FLOOR
 PORTLAND, ME 04101
 CONTRACT WITH: DIRIGO PROPERTY MANAGEMENT
EASTERN FIRE SERVICES, INC.
 AUBURN/LEWISTON INDUSTRIAL AIRPARK, AUBURN, MAINE 04210

PLANS & DETAILS
 DWG. NO. CA-1
 JOB NUMBER 1-05596-SH-17
 SCALE AS SHOWN
 DATE 2/15/17