

29 BLACK POINT ROAD  
SCARBOROUGH, MAINE 04074  
207-883-6307  
WWW.GAVRIONTURGEON.COM

**GAVRION  
TURGEON**  
ARCHITECTS

ELEVENTH FLOOR  
ONE CITY CENTER  
PORTLAND, MAINE

REVISIONS

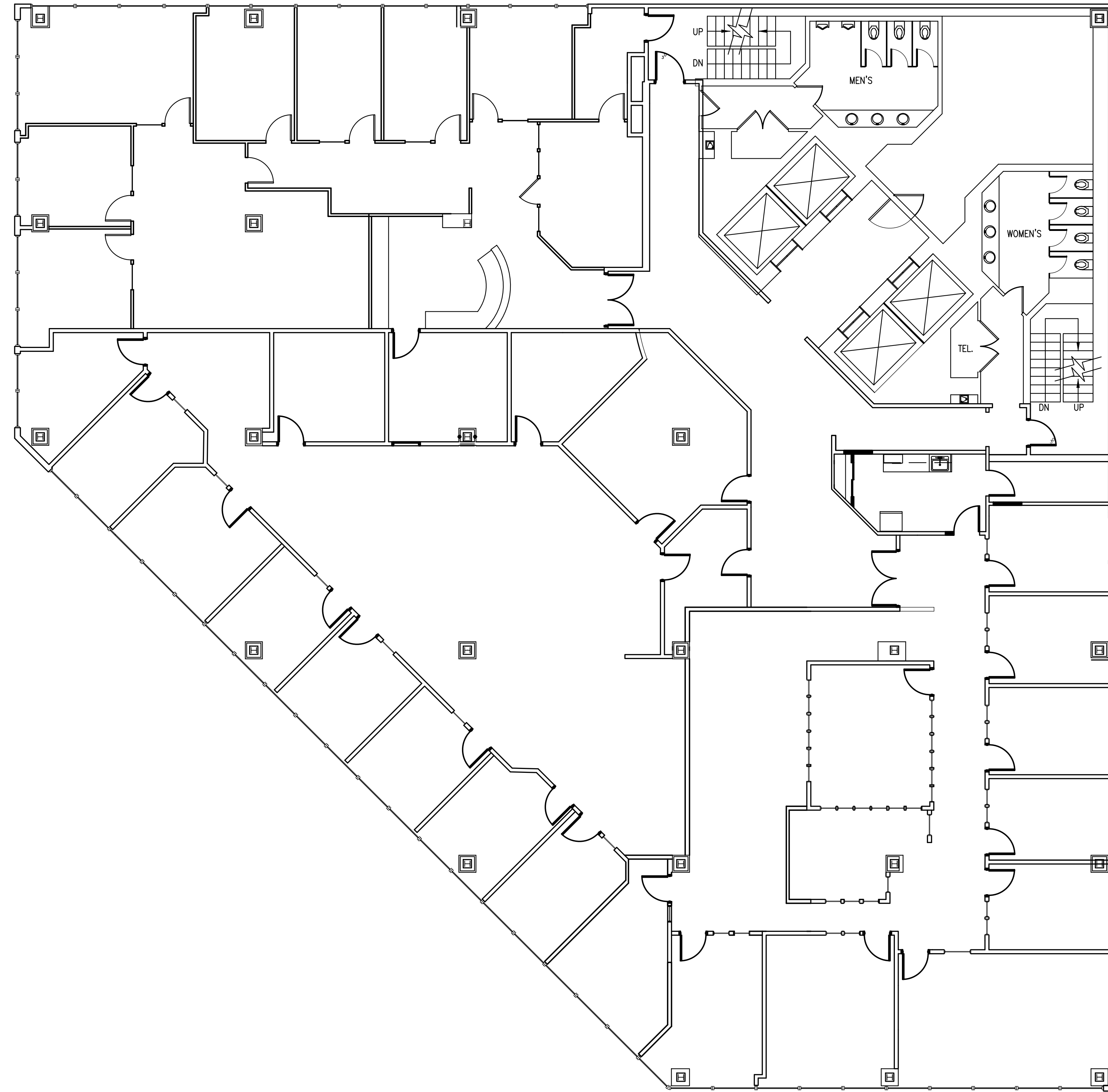
#	DATE	DESCRIPTION

DATE:	10-04-16
PROJECT #:	120715
DRAWN BY:	DLP
CHECKED BY:	MET
DRAWING SCALE:	AS NOTED

SHEET TITLE  
EXISTING CONDITION  
ELEVENTH FLOOR PLAN

EX100

© COPYRIGHT 1985-2008  
REPRODUCTION OR REUSE OF THIS  
DOCUMENT WITHOUT WRITTEN  
PERMISSION OF GAVRION TURGEON  
ARCHITECTS IS PROHIBITED.



**A1** EXISTING CONDITION ELEVENTH FLOOR PLAN

1/8"=1'-0"



PLAN NORTH

