

29 BLACK POINT ROAD
SCARBOROUGH, MAINE 04074
207-883-6307
WWW.GAWRONTURGEON.COM

**GAWRON
TURGEON**
ARCHITECTS

ELEVENTH FLOOR
ONE CITY CENTER
PORTLAND, MAINE

REVISIONS

| # | DATE | DESCRIPTION |
|---|------|-------------|
| | | |
| | | |
| | | |

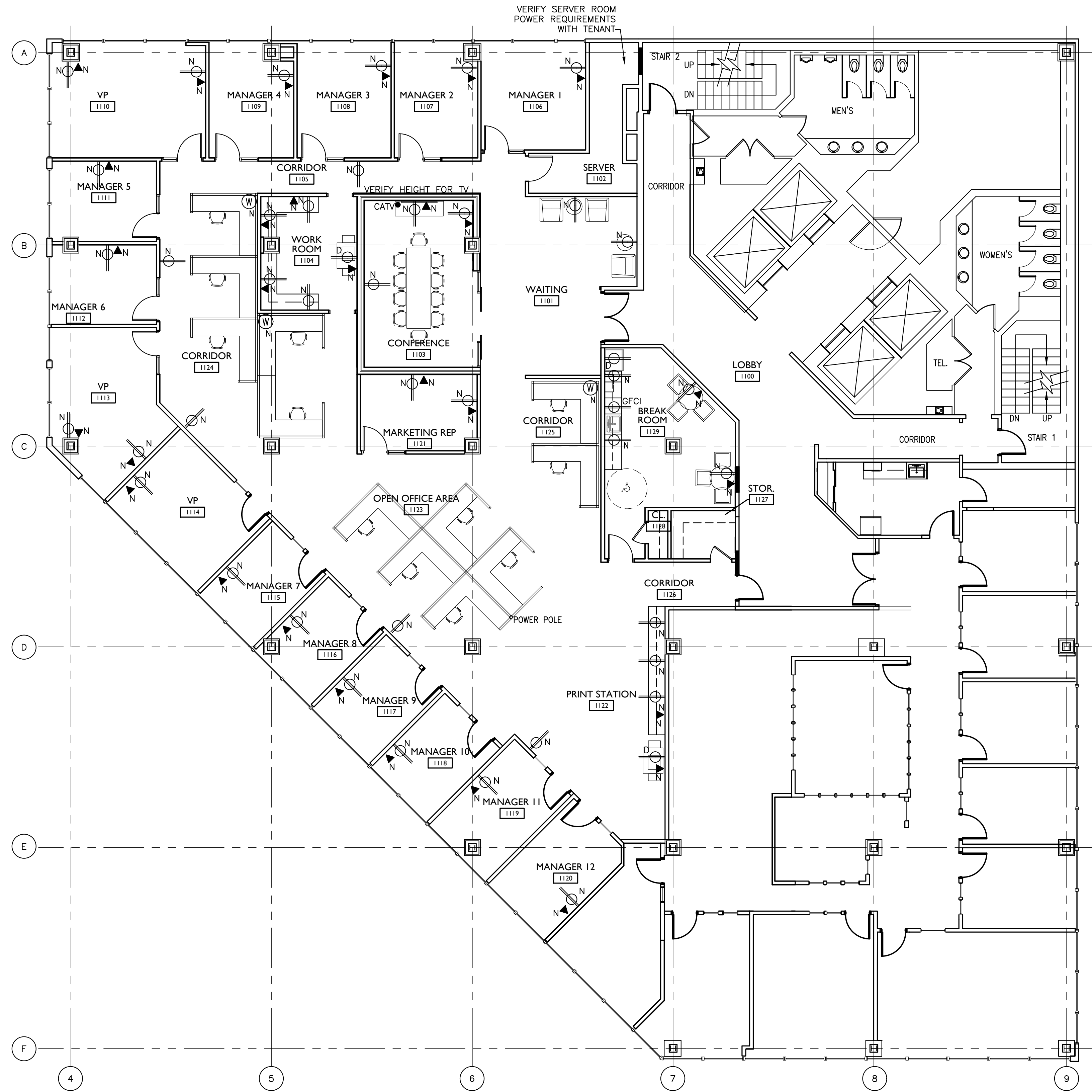
| | |
|----------------|----------|
| DATE: | 10-04-16 |
| PROJECT #: | 120715 |
| DRAWN BY: | DLP |
| CHECKED BY: | MET |
| DRAWING SCALE: | AS NOTED |

SHEET TITLE

ELEVENTH FLOOR
POWER PLAN
LEGEND/NOTES

A200

© COPYRIGHT 1985-2008
REPRODUCTION OR REUSE OF THIS
DOCUMENT WITHOUT WRITTEN
PERMISSION OF GAWRON TURGEON
ARCHITECTS IS PROHIBITED.



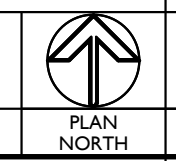
POWER PLAN LEGEND

- ▼ N TEL/DATA OUTLET
- N NEW DUPLEX OUTLET
- D NEW DEDICATED DUPLEX OUTLET
- W N ELECTRICAL WHIP CONNECTION
- N INDICATES NEW TO BE INSTALLED
- CATV

- NOTES:
- ELECTRICAL CONTRACTOR SHALL COORDINATE TELEPHONE & DATA LOCATIONS WITH LOCATIONS OF OUTLETS.
 - G.C. TO COORDINATE ALL SPECIALTY EQUIPMENT WITH TENANTS VENDOR.
 - THE FINAL TERMINATION OF THE DATA AND TELEPHONE SYSTEMS SHALL BE THE RESPONSIBILITY OF THE TENANT. GENERAL CONTRACTOR TO INSTALL CAT.5e CABLE FOR THE DATA AND TELEPHONE SYSTEMS. PROVIDE 2 NETWORK DROPS PER OFFICE & WORKSTATION.
 - G.C. TO COORDINATE POWER TO TENANT SUPPLIED SYSTEM FURNITURE. POWER WILL BE HARDWIRE WHIP CONNECTIONS OR AS RECOMMENDED BY FURNITURE INSTALLER. TEL/DATA TO BE FED THROUGH SYSTEMS FURNITURE BASE.
 - PRIOR TO CATV & POWER INSTALLATIONS FOR T.V.'S CONSULT TENANT FOR MOUNTING HEIGHTS.
 - TERMINATION OF TELEPHONE AND DATA WILL BE THRU THE TENANTS VENDOR.
 - ALL EXISTING ELECTRICAL AND DATA IN EXISTING WALLS NOT BEING DEMOLISHED TO REMAIN AS IS.
 - GASKET ALL WALL PENETRATIONS IN ROOM 1103 (BOTH SIDES).

AI ELEVENTH FLOOR POWER PLAN

1/8"=1'-0"



A15 LEGEND/NOTES