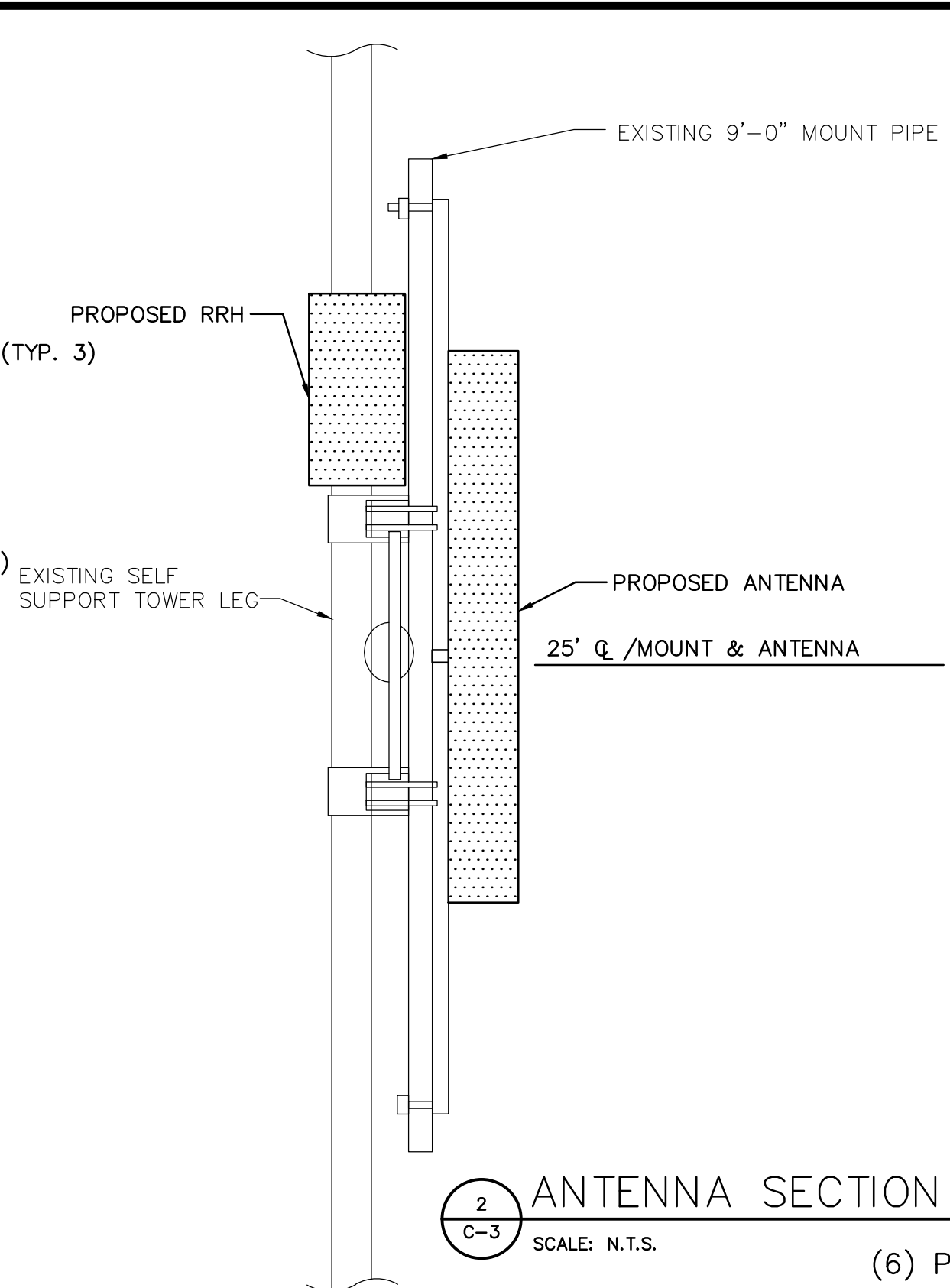
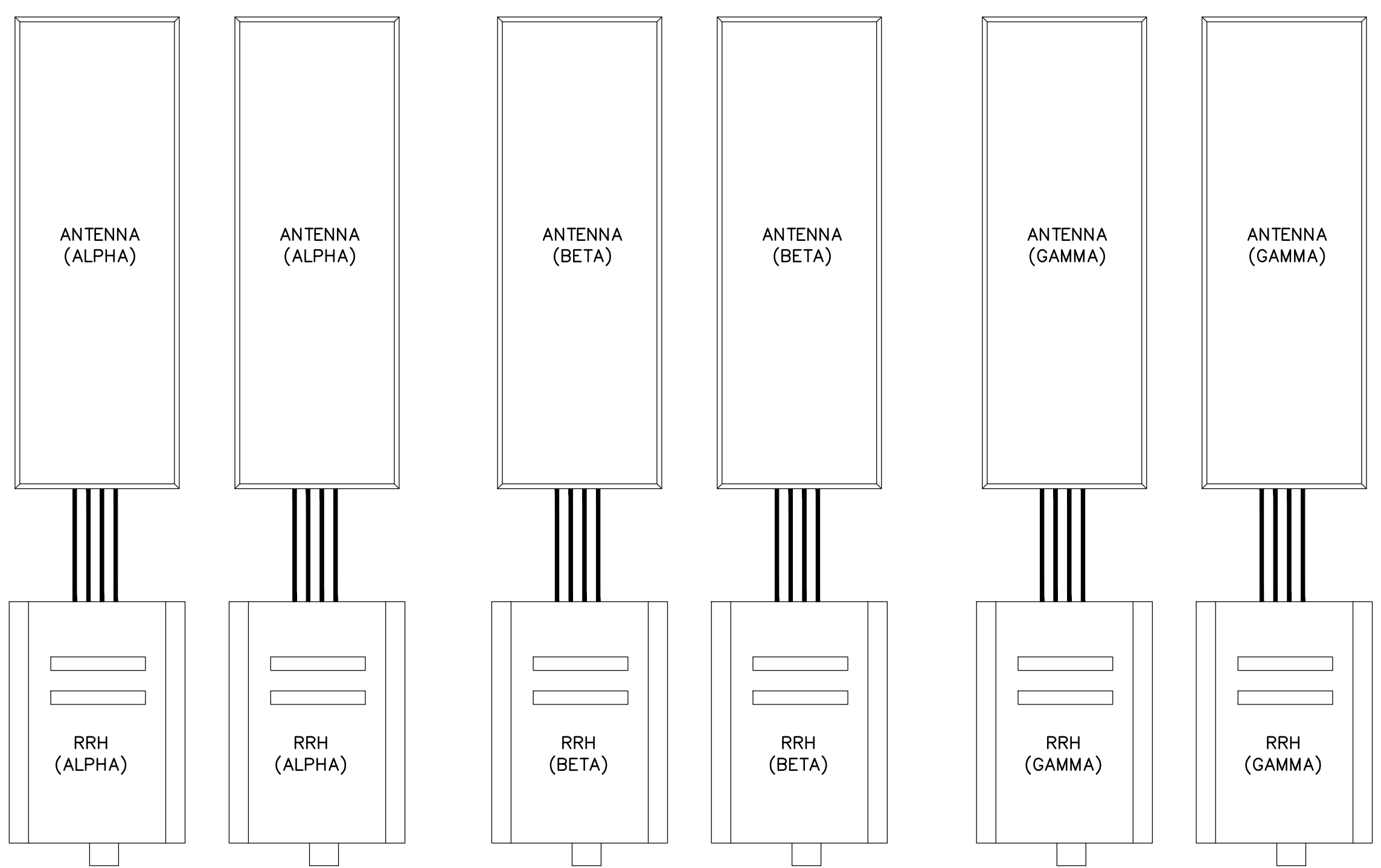


1 PROPOSED ANTENNA CONFIGURATION
C-3 SCALE: N.T.S.



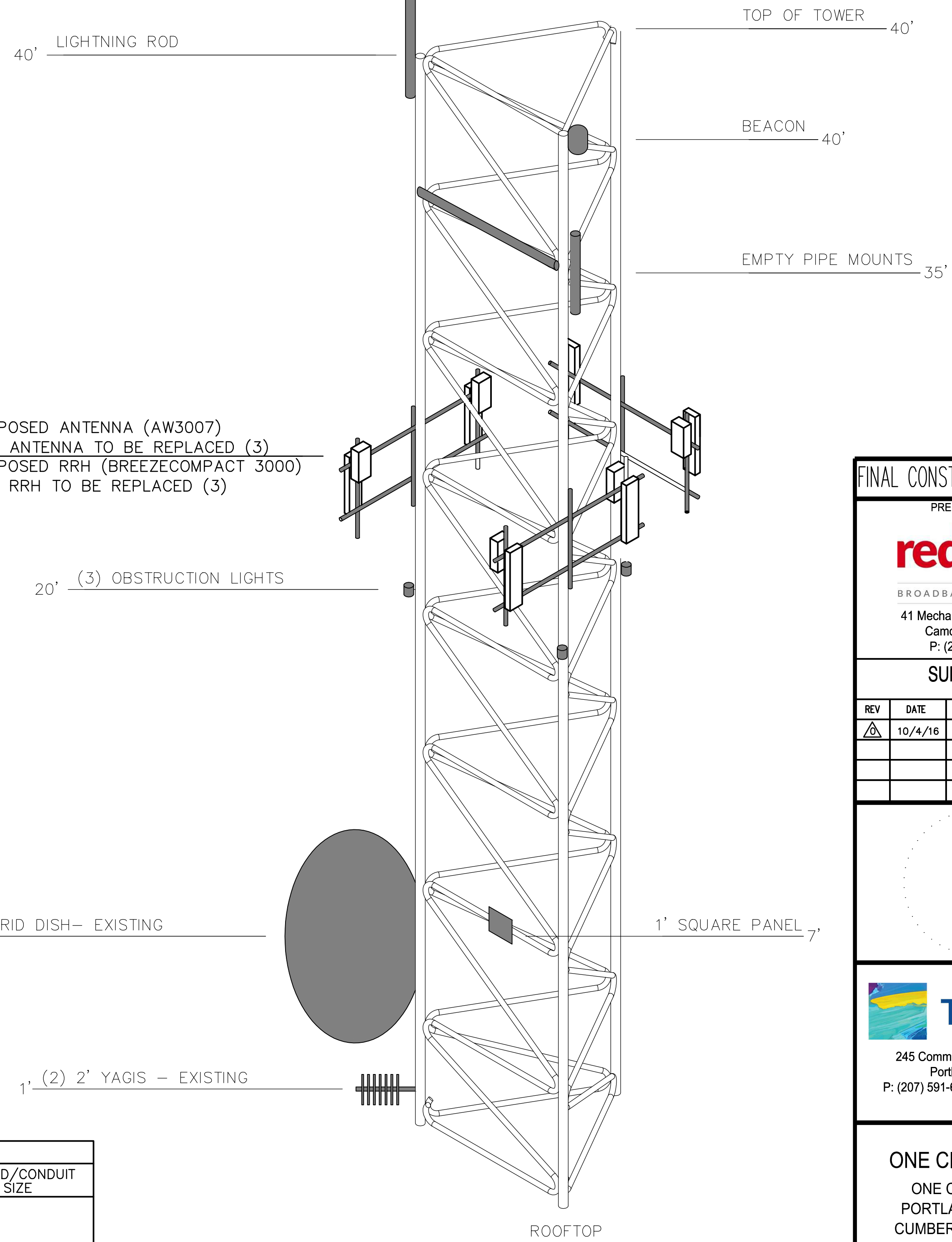
2 ANTENNA SECTION
C-3 SCALE: N.T.S.

- 25' (6) PROPOSED ANTENNA (AW3007)
- (3) EXISTING ANTENNA TO BE REPLACED
- (6) PROPOSED RRH (BREEZECOMPACT 3000)
- (3) EXISTING RRH TO BE REPLACED



3 PROPOSED ANTENNA CONNECTIONS
C-3 SCALE: N.T.S.

ANTENNA AND COAXIAL CABLE SCHEDULE											
ANTENNA	SIZE (LxWxD)	WEIGHT	COAX CABLE FEED LOC	AZIMUTH (TRUE NORTH)	AZIMUTH (MAGNETIC)	RAD CENTER	RRH (BREEZECOMPACT 3000)	SIZE (RRH)	WEIGHT (RRH)	HYBRID/CONDUIT LENGTH	HYBRID/CONDUIT SIZE
AW3007	41.3"x11"x3.3"	23.2 LB	BOTTOM	40°	56°	25'	1	13"x10.2"x15.8"	42 LB	90' (HYBRID)	1.24"
AW3007	41.3"x11"x3.3"	23.2 LB	BOTTOM	40°	56°	25'	1	13"x10.2"x15.8"	42 LB		
AW3007	41.3"x11"x3.3"	23.2 LB	BOTTOM	160°	176°	25'	1	13"x10.2"x15.8"	42 LB		
AW3007	41.3"x11"x3.3"	23.2 LB	BOTTOM	160°	176°	25'	1	13"x10.2"x15.8"	42 LB		
AW3007	41.3"x11"x3.3"	23.2 LB	BOTTOM	280°	296°	25'	1	13"x10.2"x15.8"	42 LB		
AW3007	41.3"x11"x3.3"	23.2 LB	BOTTOM	280°	296°	25'	1	13"x10.2"x15.8"	42 LB		



4 ROOFTOP TOWER ELEVATION
C-3 SCALE: N.T.S.

FINAL CONSTRUCTION DRAWING

PREPARED FOR:

 BROADBAND FOR ME
 41 Mechanic Street Suite 219
 Camden, ME 04843
 P: (207) 596-5700

SUBMITTALS

REV	DATE	ISSUED FOR
1	10/4/16	ISSUED FOR CONSTRUCTION

STAMP

245 Commercial Street Suite 203
 Portland, ME 04101
 P: (207) 591-6427 F: (207) 772-3427

ONE CITY CENTER
 ONE CITY CENTER
 PORTLAND, ME 04101
 CUMBERLAND COUNTY

SHEET TITLE
TOWER ELEVATION AND DETAILS

DRAFTED BY: CBM
 C-3
 REV 0