

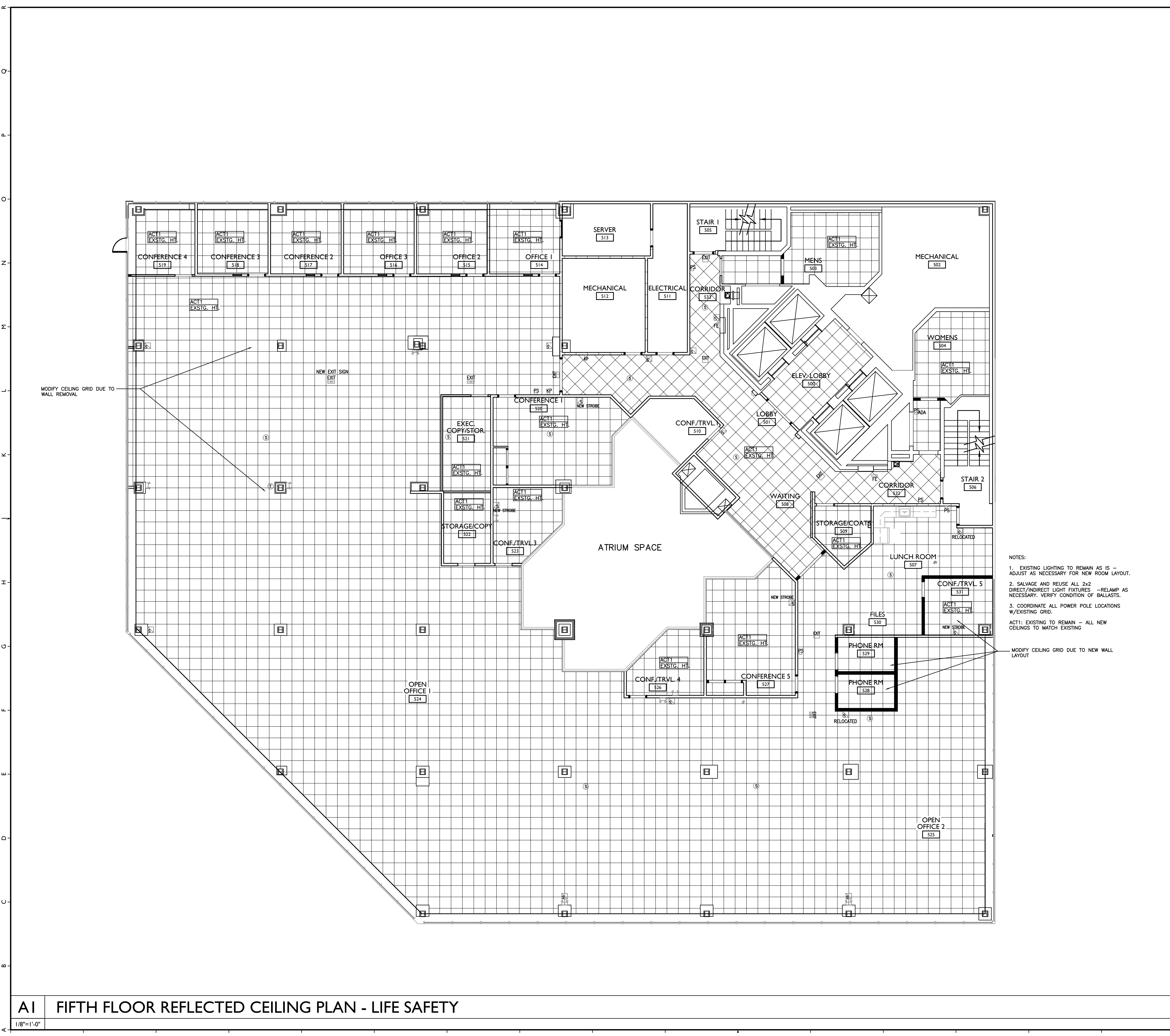
REVISIONS		
#	DATE	DESCRIPTION

DATE:	06-20-16
PROJECT #:	050416
DRAWN BY:	DLP
CHECKED BY:	MET
DRAWING SCALE:	AS NOTED

SHEET TITLE

FIFTH FLOOR
 REFLECTED CEILING
 PLAN
 LIFE SAFETY

A300



- NOTES:
- EXISTING LIGHTING TO REMAIN AS IS - ADJUST AS NECESSARY FOR NEW ROOM LAYOUT.
 - SALVAGE AND REUSE ALL 2x2 DIRECT/INDIRECT LIGHT FIXTURES - RELAMP AS NECESSARY. VERIFY CONDITION OF BALLASTS.
 - COORDINATE ALL POWER POLE LOCATIONS W/EXISTING GRID.
- ACT1: EXISTING TO REMAIN - ALL NEW CEILING TO MATCH EXISTING
- MODIFY CEILING GRID DUE TO NEW WALL LAYOUT

- LEGEND
- NEW EMERGENCY BATTERY UNIT
 - NEW CEILING MOUNTED EXIT SIGN
 - NEW HORN STROBE
- NOTES:
- ALL EXISTING CEILING GRID AND TILES TO REMAIN. REPLACE ANY AND ALL DAMAGED TILES TO MATCH BUILDING STANDARD.
 - ALL EXISTING LIGHTING FIXTURES TO REMAIN - SUPPLEMENT WITH NEW FIXTURES PER TENANTS REQUEST.
 - ALL EXISTING LIFE SAFETY DEVICES TO REMAIN AS IS
 - ADD NEW LIFE SAFETY DEVICES AS NECESSARY PER CODE.

A1 FIFTH FLOOR REFLECTED CEILING PLAN - LIFE SAFETY

A17 LEGEND



1/8"=1'-0"