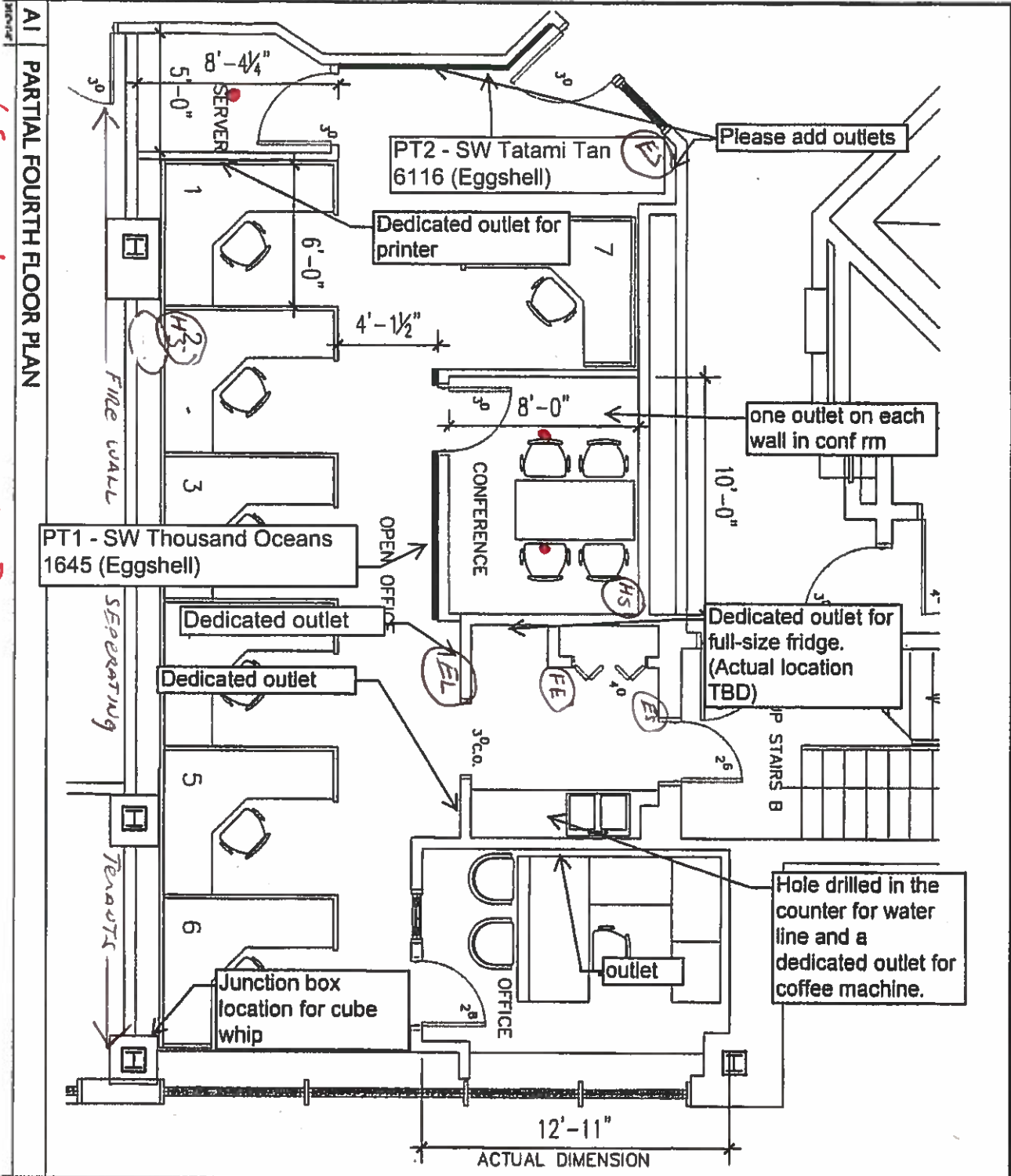


LS - LIFE SAFETY PLAN



All existing devices except for:  
 3 - New sprinkler heads  
 1 - New heat smoke detector

**Gawron Turgeon ARCHITECTS**

267-883-6307 ext 267-883-0361 fax

DATE:	12-16-14
PROJECT:	110314
DRAWN BY:	DLP
DRAWING SCALE:	3/16" = 1'-0"

**PHILADELPHIA INSURANCE**  
**ONE CITY CENTER**  
**FOURTH FLOOR**

**A100**

© COPYRIGHT 1998-2014  
 PHILADELPHIA INSURANCE COMPANY  
 1500 MARKET STREET, PHILADELPHIA, PA 19102

**LEGEND**

- NEW SPRINKLERS
- EXISTING SPRINKLERS TO REMAIN EXCEPT WHERE NOTED
- EXISTING SMOKE DETECTORS TO REMAIN IN EXISTING LOCATIONS
- EXISTING EMERGENCY LIGHTS AND EXIT SIGNS TO REMAIN IN EXISTING LOCATIONS
- RB ALLEN WILL VERIFY LOCATIONS OF ALL SMOKE DETECTORS AND MAKE ADJUSTMENTS TO MEET NFPA CODE 96 IF NEEDED
- EASTERN SPRINKLER WILL INSTALL NEW SPRINKLER HEADS AND VERIFY LOCATIONS OF ALL NEW AND EXISTING SPRINKLERS AND MAKE ANY NECESSARY ADJUSTMENTS TO MEET NFPA CODE 96 IF NEEDED