

**2009 NFPA: CODE DATA**

CH. 38 BUSINESS (EXISTING BUILDING)	
TYPE OF CONSTRUCTION	TYPE II O.O.O (EXISTING)
OCCUPANT LOAD	7,000 S.F. /100 = 70 SF/PP
EXTERIOR BEARING WALLS	0 HOUR
EXTERIOR NONBEARING WALLS	0 HOUR
INTERIOR BEARING WALLS	0 HOUR
COLUMNS	0 HOUR
BEAMS, GIRDERS, TRUSSES	0 HOUR
FLOOR CONSTRUCTION	0 HOUR
FLOOR SEPARATION AT ASSEMBLY USE GROUP	1 HOUR
ROOF CONSTRUCTION	0 HOUR
MECHANICAL / ELECTRICAL ROOMS	1 HOUR
TENANT SEPARATION	0 HOUR
MAINE PERS - PARTIAL EIGHTH FLOOR	7,000 S.F.
TOTAL FLOOR AREA - EIGHTH FLOOR	12,925 S.F. - TOTAL EIGHTH FLOOR
BUILDING HEIGHT	173' +/- , 13 STORIES
FIRE SUPPRESSION	YES
HAZZARD	1 HOUR
FIRE EXTINGUISHERS	PER NFPA 2009
COMMON PATH OF TRAVEL LIMIT	75'
DEAD-END LIMIT	50'
TRAVEL DISTANCE LIMIT	200'
EXITS	
CORRIDOR WIDTH	44"
STAIR ENCLOSURES	1 HOUR
SHAFTS	1 HOUR
EXIT ACCESS CORRIDORS	0 HOUR
FLAME SPREAD RATINGS:	
INTERIOR FINISH REQUIREMENTS (SPRINKLERED BLDG)	
WALLS AND CEILINGS	CLASS A, B OR C
EXIT ACCESS CORRIDORS	CLASS A OR CLASS B
INTERIOR FLOOR FINISH REQUIREMENTS	
EXITS	CLASS I OR CLASS II (REDUCTION PERMITTED OF ONE CLASS IN SPRINKLERED BUILDING)
CORRIDORS	
GENERAL NOTES	1. ALL PENETRATIONS OF SMOKE BARRIERS, PARTITIONS, FIRE RATED WALLS AND FLOORS SHALL BE SEALED WITH PROPER APPROVED MATERIALS

**2009 IBC: CODE DATA**

Business Occupancy (EXISTING BLDG)		SECTION 403 HIGH RISE BUILDINGS
OCCUPANT LOAD	7,000/100 = 70	
USE GROUP CLASSIFICATION	BUSINESS	
TYPE OF CONSTRUCTION	TYPE II B (EXISTING)	
ACTUAL FLOOR AREA	12,925 S.F. - RENOVATED AREA IS 7,000 S.F.	
TOTAL BUILDING AREA	240,000 SF +/-	
TABLE 503 BUILDING AREA LIMITATION - SQ. FT.	3 LEVELS @ 23,000 SF PER LEVEL ALLOWED	
504.2 ALLOWABLE BUILDING HEIGHT INCREASE DUE TO SPRINKLER	55' ALLOWED + 20' FOR SPRINKLER- TOTAL ALLOWED = 75'	
ACTUAL BUILDING HEIGHT	173' +/-	
EXIT ACCESS TRAVEL DISTANCE	200'-0"	
DEAD END CORRIDORS	20'-0" / 50'-0" W/ FIRE SUPPRESSION SYSTEM	
CORRIDOR WIDTH	44"	
STAIRWAY WIDTH	44"	
FIRE RATING:		
EXTERIOR BEARING WALLS	0 HOUR	
INTERIOR BEARING WALLS	0 HOUR	
NON-BEARING WALLS & PARTITIONS	0 HOUR	
FLOOR CONSTRUCTION	0 HOUR	
ROOF CONSTRUCTION	0 HOUR	
CORRIDORS	0 HOUR	
STAIR ENCLOSURES	1 HOUR	
SHAFTS	1 HOUR FOR < 4 STORIES	
UNIT SEPARATION	1 HOUR	
MECHANICAL/ELECTRICAL ROOMS	1 HOUR	
LAUNDRY/STORAGE >100 SF	1 HOUR	
WASTE COLLECTION >100 SF	1 HOUR	
FLAME SPREAD RATINGS:		
INTERIOR WALL & CEILING FINISH REQUIREMENTS		
EXIT ENCLOSURES & EXIT PASSAGEWAYS	A	
CORRIDORS	B	
ROOMS OR ENCLOSED SPACES	C	
INTERIOR FLOOR FINISH REQUIREMENTS		
EXIT ENCLOSURES & EXIT PASSAGEWAYS	CLASS II	
CORRIDORS	CLASS II	
GENERAL NOTES	1. ALL PENETRATIONS OF SMOKE BARRIERS, PARTITIONS, FIRE RATED WALLS AND FLOORS SHALL BE SEALED WITH PROPER APPROVED MATERIALS 2. ALL WORK SHALL CONFORM TO LOCAL AND STATE CODES, ORDINANCES, AND REQUIREMENTS, ACCESSIBILITY PER A.D.A.A.G.	

USABLE AREA UNDER RENOVATIONS:

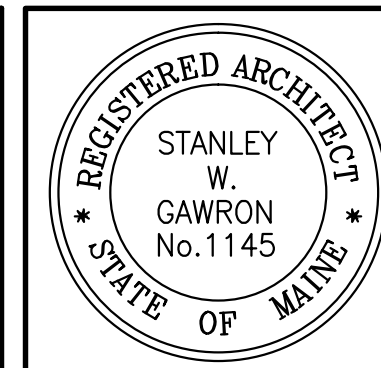
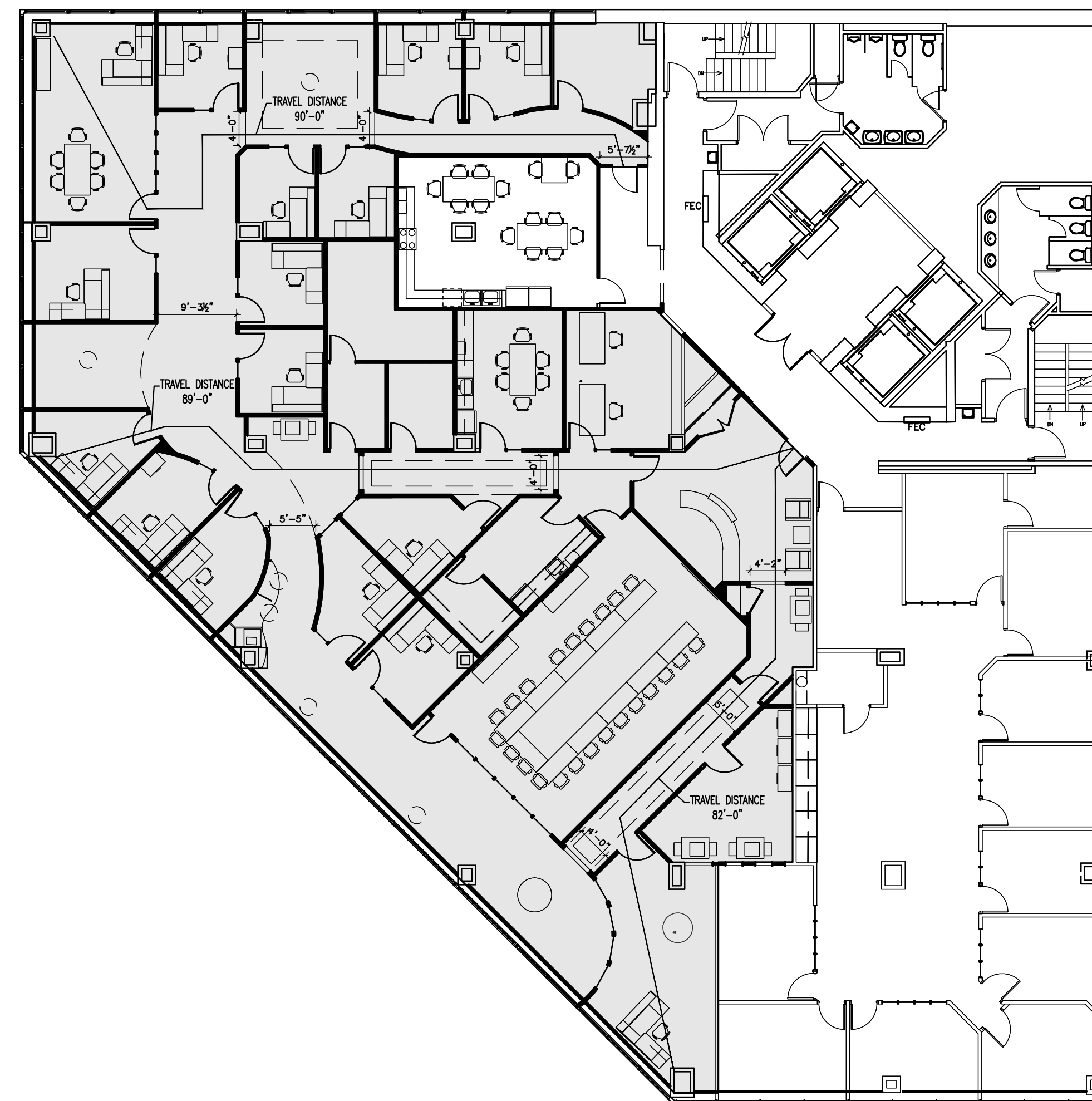
EIGHTH FLOOR: 7,000 S.F.

NOTES:

- FOR FIRE RESISTANCE RATED NON LOAD BEARING WALLS AND FIRE RESISTANCE RATED FLOOR ASSEMBLIES, PROVIDE THROUGH PENETRATION FIRE STOP SYSTEMS THAT ARE PRODUCED AND INSTALLED TO RESIST THE SPREAD OF FIRE ACCORDING TO THE REQUIREMENTS INDICATED, RESIST PASSAGE OF SMOKE AND OTHER GASES, AND MAINTAIN ORIGINAL FIRE RESISTANCE RATING OF ASSEMBLY PENETRATED.
- F-RATED SYSTEMS: PROVIDE THROUGH PENETRATION FIRE STOP SYSTEMS WITH F RATINGS INDICATED AS DETERMINED PER ASTM E 814 BUT NOT LESS THAN THAT EQUALING OR EXCEEDING FIRE RESISTANCE RATINGS OF CONSTRUCTIONS PENETRATED.
- T-RATED SYSTEMS: FOR THE FOLLOWING CONDITIONS, PROVIDE THROUGH PENETRATION FIRESTOPS WITH T-RATING INDICATED AS WELL AS F RATINGS AS DETERMINED PER ASTM E 814, WHERE SYSTEMS PROTECT PENETRATING ITEMS EXPOSED TO POTENTIAL CONTACT WITH ADJACENT MATERIALS IN OCCUPIABLE FLOOR AREAS:
  - PENETRATIONS LOCATED OUTSIDE WALL CAVITIES.
  - PENETRATIONS LOCATED OUTSIDE FIRE RESISTANCE SHAFT ENCLOSURES
  - PENETRATIONS LOCATED IN CONSTRUCTION CONTAINING FIRE PROTECTION RATED OPENINGS.
  - PENETRATION OF ITEMS LARGER THAN 4 INCH DIAMETER NOMINAL PIPE OR 16 SQ IN IN OVERALL CROSS SECTIONAL AREA.
- PROVIDE THROUGH PENETRATION FIRE STOP SYSTEMS AT ALL EXISTING ABANDONED CONCRETE CORE DRILLS.
- ALL THROUGH PENETRATION PRODUCTS SHALL BE FROM A SINGLE SOURCE SUPPLIER.

**L14 DEVELOPMENT DATA**

NTS



**MainePERS**  
 ONE CITY CENTER-8TH FLOOR  
 PORTLAND, MAINE

REVISIONS		
#	DATE	DESCRIPTION

DATE:	08.07.13
PROJECT #:	010613
DRAWN BY:	DLP
CHECKED BY:	MET
DRAWING SCALE:	AS NOTED

SHEET TITLE  
CODE REVIEW

**G102**

© COPYRIGHT 1985-2008  
REPRODUCTION OR REUSE OF THIS DOCUMENT WITHOUT WRITTEN PERMISSION OF GAWRON TURGEON ARCHITECTS IS PROHIBITED.

**AI CODE REVIEW DATA**

**A14 CODE REVIEW PLAN**

NTS