

MainePERS  
ONE CITY CENTER-8TH FLOOR  
PORTLAND, MAINE

REVISIONS		
#	DATE	DESCRIPTION

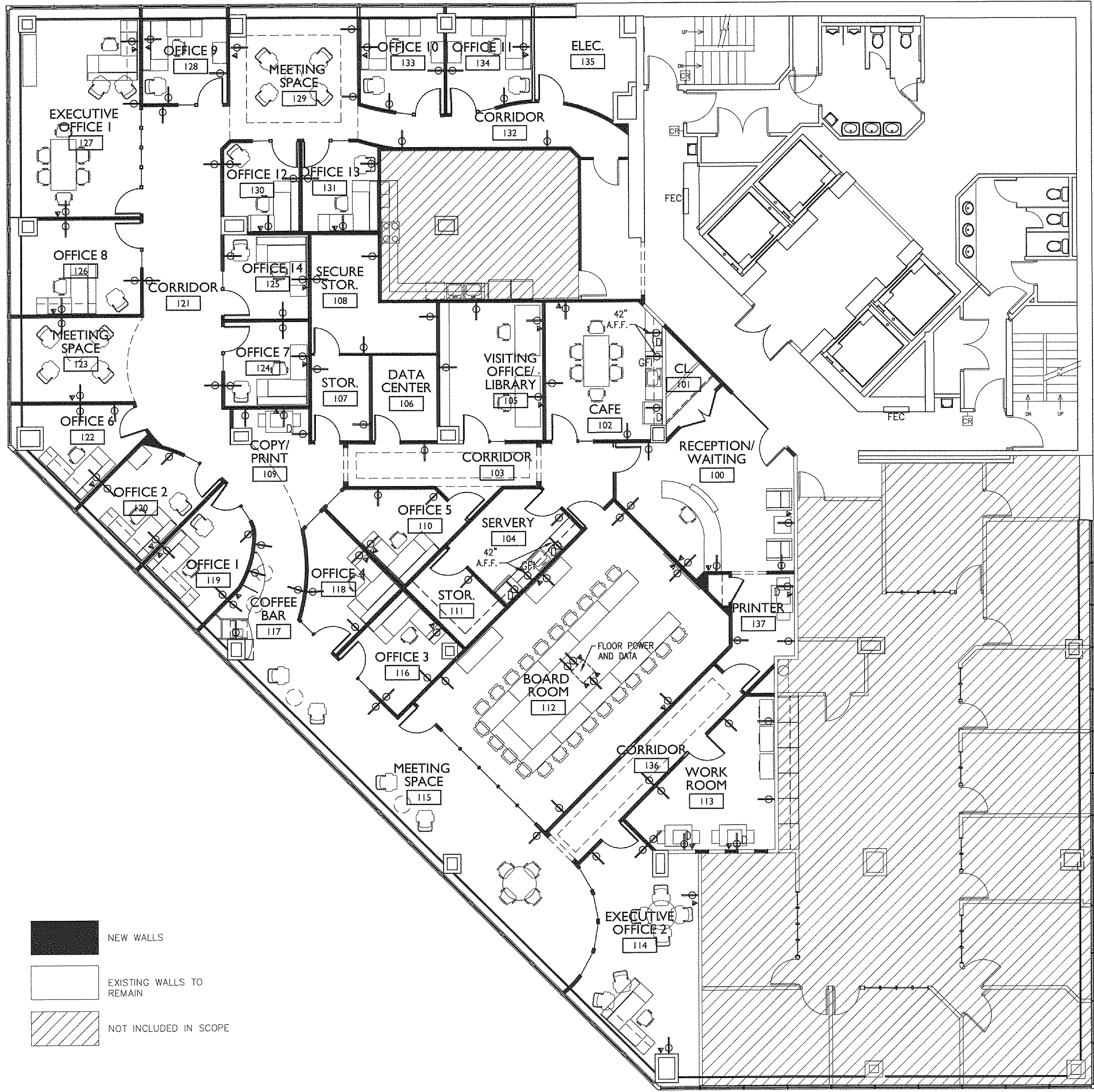
DATE:	08.07.13
PROJECT #:	010613
DRAWN BY:	DLP
CHECKED BY:	MET
DRAWING SCALE:	

SHEET TITLE
POWER PLAN

A200

PLAN NORTH

© COPYRIGHT 1985-2008 REPRODUCTION OR USE OF THIS DOCUMENT WITHOUT THE PERMISSION OF GAWRON TURGEON ARCHITECTS IS PROHIBITED



NEW WALLS  
 EXISTING WALLS TO REMAIN  
 NOT INCLUDED IN SCOPE

POWER PLAN LEGEND

- ▼ TEL/DATA OUTLET - ONE PHONE/ONE DATA
- ▼ TEL/DATA OUTLET - 2 PHONE 2 DATA
- ⊕ DUPLEX OUTLET
- ⊕<sub>D</sub> DEDICATED DUPLEX OUTLET

NOTES:

1. CONFIRM THAT ALL EXISTING POWER AND DATA IS IN WORKING ORDER
2. POWER AND DATA FOR DATA CENTER TO BE COORDINATED W/ TENANT
3. EXISTING POWER ON PERIMETER WALLS TO REMAIN AS IS
4. VERIFY HEIGHT AND LOCATIONS OF DUPLEX OUTLETS & TEL/DATA IN FIELD COORDINATE ALL POWER AND DATA LOCATIONS WITH TENANTS FURNITURE.
5. ALL POWER AND DATA TO THE DATA CENTER 106 TO BE COORDINATED WITH THE TENANTS VENDOR.

A1 POWER PLAN

1/8"=1'-0"

20