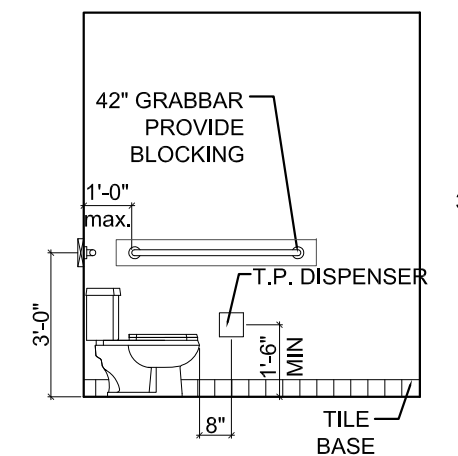
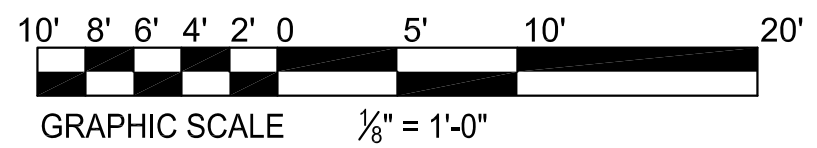
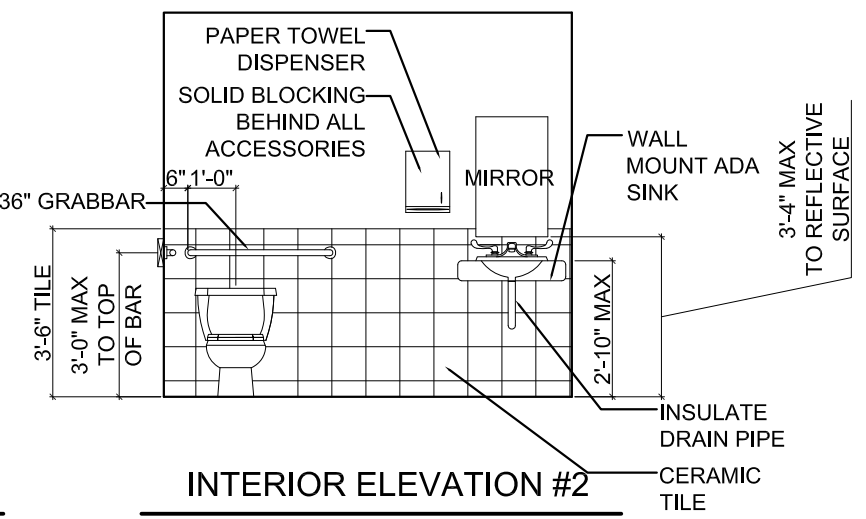


PROPOSED FIRST FLOOR PARTIAL PLAN 1,425 sf
1/8"=1'-0"



INTERIOR ELEVATION #1
1/4"=1'-0"

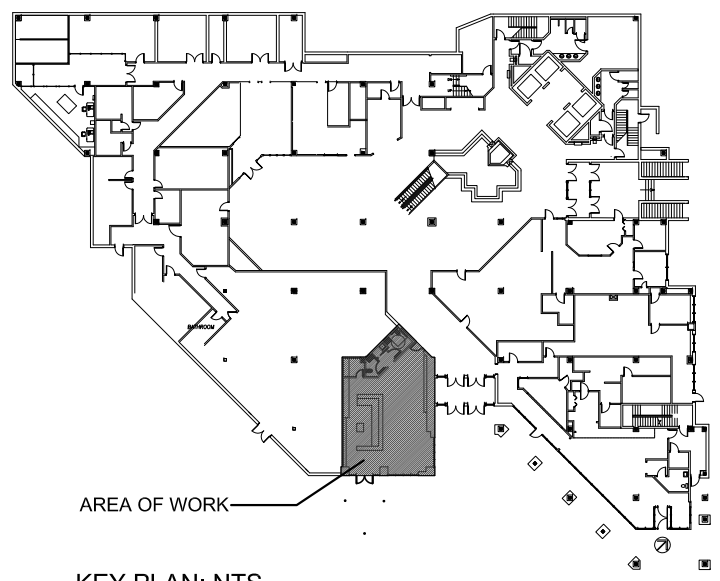


INTERIOR ELEVATION #2
1/4"=1'-0"

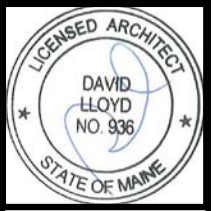
CODE REVIEW
NFPA 101 2009

	NFPA 101
OCCUPANT LOAD	7.3.1.2
WINE BAR	980SF / 15 = 65
MISC	409SF / 100 = 4
TOTAL OCCUPANTS	=69
FIRE ALARM NOT REQUIRED AS LESS THAN 300	12.3.4.1.1
EMERGENCY LIGHTING REQUIRED	12.2.9.1
FULLY SPRINKLED	12.3.5.1

LEGEND												
— EXISTING WALL TO REMAIN			⊗ EXIT SIGN									
- - - EXISTING WALL TO BE DEMOLISHED			⬆ EMERGENCY LIGHTING									
▨ NEW WALL												
DOOR SCHEDULE												
<p>NEW WALL CONSTRUCTION One Layer 5/8" Gypsum Board on each side of 3-5/8" steel stud spaced at 24" on center. At wet wall use 6" metal stud in lieu of 3-5/8" At demising wall with adjacent tenant run wall to bottom of deck</p>												
<table border="0"> <tr> <td>GLASS</td> <td></td> <td></td> </tr> <tr> <td>TYPE A</td> <td>TYPE B</td> <td>TYPE C</td> </tr> </table>							GLASS			TYPE A	TYPE B	TYPE C
GLASS												
TYPE A	TYPE B	TYPE C										
#	LOCATION	SIZE	HARDWARE	TYPE	MATERIAL	NOTES						
1	OFFICE	3'-0" x 7'-0" x 1.75"	KEYED	A	SCW / GLASS							
2	RESTROOM	2'-6" x 7'-0" x 1.75"	PRIVACY	C	SOLID CORE WOOD							
3	RESTROOM	3'-0" x 7'-0" x 1.75"	PRIVACY	C	SOLID CORE WOOD							
4	CLOSET	2'-6" x 7'-0" x 1.75"	KEYED	C	SOLID CORE WOOD	SLIDING						
5	ENTRY	3'-0" x 7'-0" x 1.75"	KEYED	A	ALUMINUM / GLASS							



KEY PLAN: NTS



ARCHETYPE architects
 48 Union Wharf Portland, Maine 04101
 (207) 772-6022 Fax (207) 772-4056

Date: 01 May 2013
 Scale: 1/8" = 1'-0"

EXISTING FLOOR PLAN

MJ'S WINE BAR

1 CITY CENTER
 PORTLAND, MAINE

A1