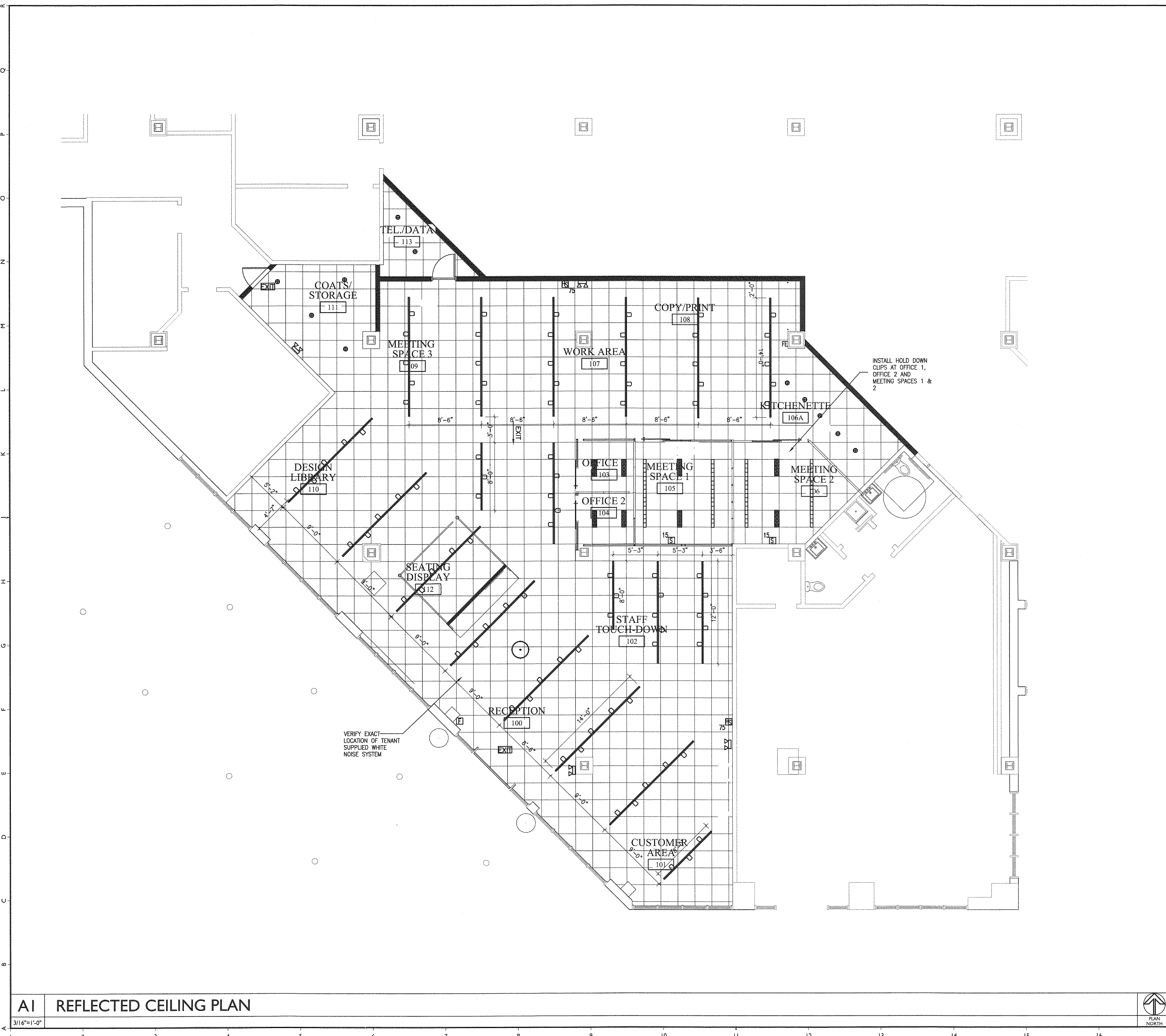


Gawron Turgeon
ARCHITECTS
29 Black Point Road
Scarborough, Maine 04074
www.gawronturgeon.com
207-883-6907 tel 207-883-0361 fax

RED THREAD
ONE CITY CENTER, FIRST FLOOR
PORTLAND, MAINE



- LIFE SAFETY LEGEND**
- EXIT DIRECTIONAL EXIT SIGNAGE
 - EXIT EXIT SIGNAGE
 - FE FIRE EXTINGUISHER
 - ES-30 FIRE ALARM AUDIO/VISUAL STROBE - NUMERAL DENOTES CANDELA RATING
 - EA EMERGENCY BATTERY UNIT - 2 HEADS
 - FI FIRE ALARM PULL STATION

- LIGHT FIXTURE LEGEND**
- ⊙ RECESSED CAN FIXTURE, FOCAL POINT LIGHTING, ID DOWN LIGHT, 4 1/2" APERTURE, WHITE FINISH
 - ⊞ AMBABLE RECESSED MULTI-LAMP FIXTURE, RSA LIGHTING, COMBOLIGHT, 4 LIGHTS- C4
 - ▬ 4" RECESSED LINEAR ASYMMETRICAL THROW, ZUMTOBEL LIGHTING, SLOTLIGHT PRO, 1/8" SLOT-GRID, FLUSH INSTALLATION, 8' LENGTHS
 - ▬ LED TRACK LIGHTING; ZUMTOBEL LIGHTING, KAVEROS SERIES, SMALL TACK HEAD, 2 1/2" APERTURE, WHITE FINISH, PROVIDE (5) HEADS PER TRACK STRIP
 - ⊙ DECORATIVE FIXTURE, TBS BY TENANT - G.C. TO INSTALL

ACT - USG MARS CLIMA PLUS, HIGH NRC, WHITE GRID -WHITE DOWN CENTRICITEE 9/16" WITH SHADOWLINE MOLDINGS AT PERIMETER 6" SONOBATT INSULATION AND TIE HOLD DOWN CLIPS ONLY OVER ENCLOSED AREAS FOR ACOUSTIC PERFORMANCE WITH VIA [L-0]

- GENERAL NOTES**
1. MECH SUBCONTRACTOR TO VERIFY SIZE AND LOCATION OF ANY MECH REGISTERS WITH ARCHITECT PRIOR TO CONSTRUCTION.
 2. REMOVE ALL TILES AND RECESSED FIXTURES, PREPARE FOR NEW
 3. INDEPENDENTLY SWITCH ALL OFFICES & MEETING SPACES..
 4. INDEPENDENTLY SWITCH TRACK LIGHTING SYSTEM.
 5. PROVIDE POWER TO OWNER SUPPLIED FURNITURE. POWER SHALL BE PROVIDED THROUGH WALLS, COLUMNS OR THROUGH FLOOR MONUMENTS.

REVISIONS

| # | DATE | DESCRIPTION |
|---|------|-------------|
| | | |
| | | |

| | |
|----------------|----------|
| DATE: | 08.28.13 |
| PROJECT #: | 060413 |
| DRAWN BY: | DLP |
| CHECKED BY: | SWG |
| DRAWING SCALE: | AS NOTED |

SHEET TITLE
REFLECTED CEILING PLAN
LEGEND / NOTES

A300

© COPYRIGHT 1985-2008
REPRODUCTION OR USE OF THIS
DOCUMENT WITHOUT WRITTEN
PERMISSION OF GAWRON TURGEON
ARCHITECTS IS PROHIBITED

AI REFLECTED CEILING PLAN

A17 LEGEND AND NOTES