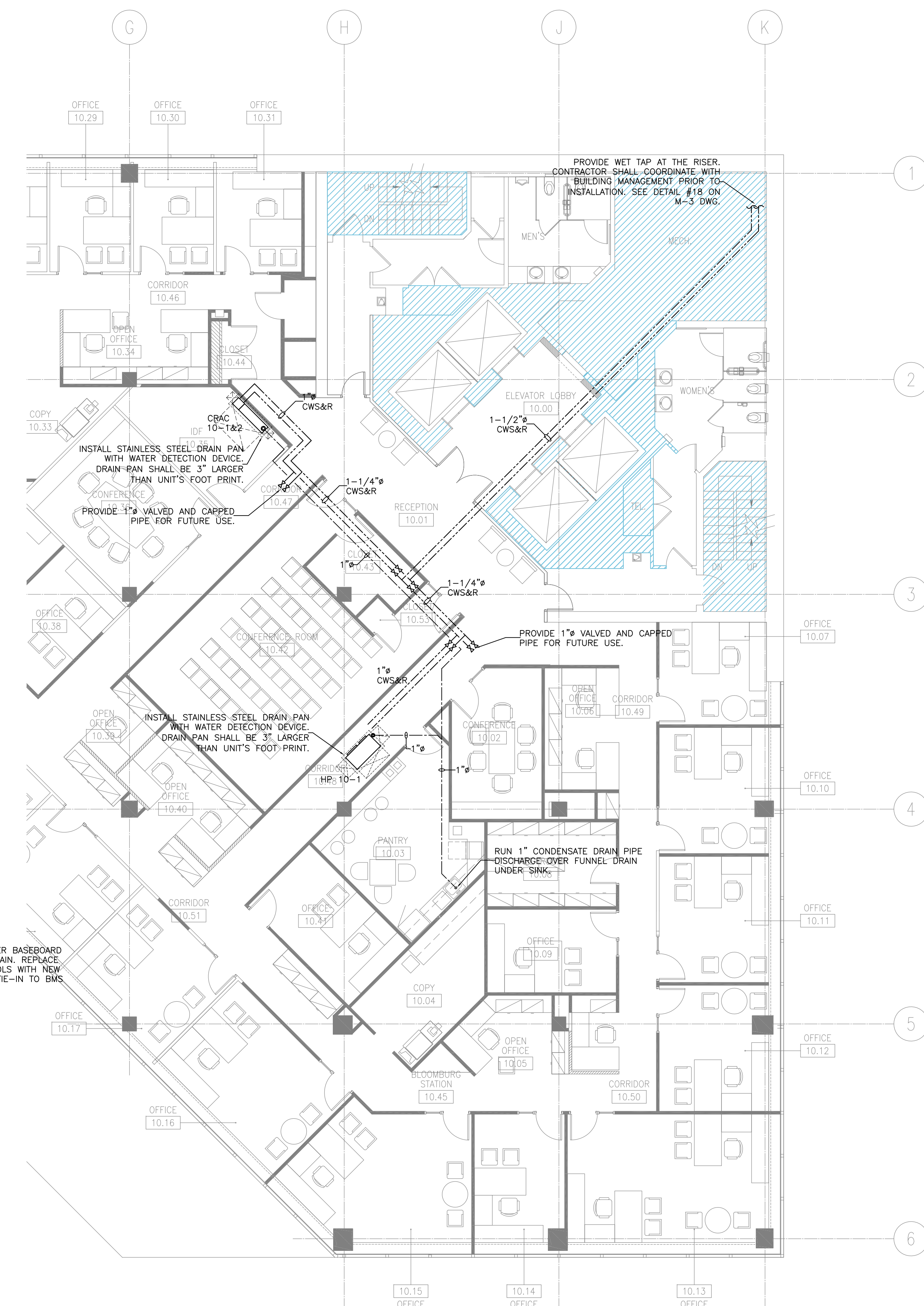


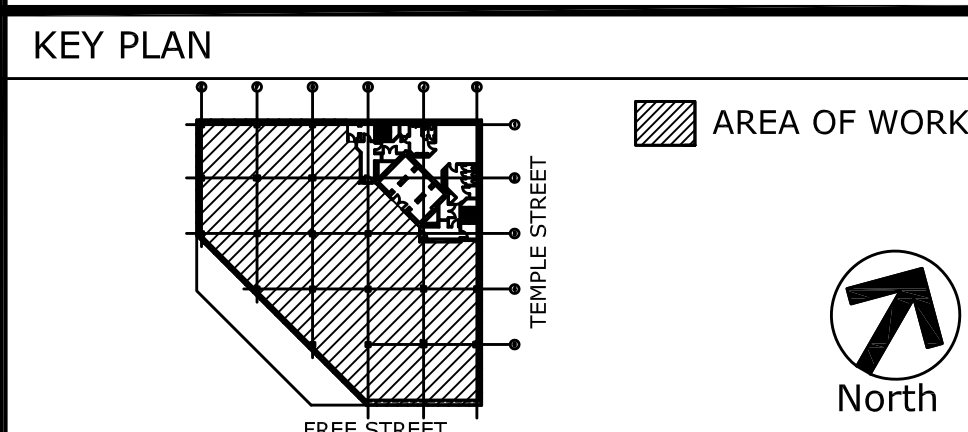
10TH FLOOR HVAC PLAN
1/8"=1'-0"



10TH FLOOR PIPING PLAN
1/8"=1'-0"

REVISIONS		
NO.	DATE	DESCRIPTION
1	07.18.07	ADDENDUM #1
2	08.13.07	ISSUE FOR CONSTRUCTION

NO.	DATE	COPIES	TO WHOM
2	07.13.07		ISSUE FOR BID
1	07.13.07		ISSUE FOR PERMIT



CLIFFORD DIAS, P.E., P.C.
CONSULTING ENGINEERS
7 Day Street - Suite 1601, New York, NY 10007
Tel: 212.608.4811 Fax: 212.267.0622
e-mail: mail@diaseng.com

Ted Moudis Associates
ARCHITECTURE
INTERIOR DESIGN
79 Madison Avenue
New York, NY 10017
212.368.8900
Fax: 212.361.2020
One Financial Place
480 So. LaSalle Street
Chicago, IL 60605
312.663.0130
Fax: 312.663.0138
www.tedmoudis.com

DEMOLITION NOTES

- REMOVE ALL EXISTING VAV BOXES, FANS, ITS CONTROLS, DUCTWORK, AND AIR OUTLETS THROUGHOUT THE SPACE.
- REMOVE ALL EXISTING PNEUMATIC CONTROL VALVES FOR THE PERIMETER HOT WATER BASEBOARD RADIATORS.
PROVIDE NEW VALVES WITH DDC CONTROLS AND TIE-IN TO THE BUILDING ENERGY MANAGEMENT SYSTEM. COORDINATE WITH BUILDING MANAGEMENT.
- PROVIDE/RELOCATE NEW HOT WATER PIPES, INSULATION, FITTING AND SUPPORT, CAUSED BY PARTITION CHANGE.

GENERAL NOTES

- CONTRACTOR SHALL PROVIDE WIRE MESH SCREEN FOR ALL RETURN AIR OPENINGS.
- FINAL THERMOSTAT LOCATION SHALL BE COORDINATED WITH ARCHITECT PRIOR TO INSTALLATION.
THERMOSTATS ARE TO BE ALIGNED ABOVE LIGHT SWITCHES.
IF FIELD LOCATION OF LIGHT SWITCH VARIES FROM LOCATION SHOWN IN DRAWINGS, FIELD LOCATION SUPERSEDES DRAWING LOCATION. PRIOR TO WORK COMMENCING, G.C. TO CONTACT ARCH. WITH ALL LOCATION DISCREPANCIES BETWEEN FIELD AND DRAWINGS.
- CONTRACTOR SHALL INSTALL FIRE/SMOKE DAMPER WHERE IT IS REQUIRED BY AUTHORITIES HAVING JURISDICTIONS AND LOCAL CODES.
- CEILING MOUNTED EQUIPMENT SHALL BE INSTALLED WITH SUFFICIENT CLEARANCE FOR FUTURE MAINTENANCE. FOLLOW THE MANUFACTURERS RECOMMENDATIONS FOR INSTALLATION.
- ALL BRANCH DUCTWORK SERVING SUPPLY AIR DIFFUSERS, RETURN AIR DUCTWORK, AND FRESH AIR DUCTWORK SHALL HAVE VOLUME DAMPERS FOR BALANCING.

DRAWING NOTES

1 - --

HVAC LEGEND

-----	EXISTING DUCTWORK TO REMAIN		RETURN AIR FLOW DIRECTION
----	NEW DUCTWORK		NEW VAV BOX
---	DUCTWORK CONTINUED		AUTO CHANGEOVER CONTROL PANEL
=====	SOUNDLINE DUCTWORK		REQUIRED CLEARANCE COMPUTER ROOM AC UNIT
	NEW LINEAR FLOW BAR SUPPLY DIFFUSER (1-SLOT)		REQUIRED CLEARANCE SUPPLEMENTAL AC UNIT
	NEW LINEAR FLOW BAR RETURN (1-SLOT)		CONNECTION OF NEW WORK TO EXISTING
	NEW CEILING DIFFUSER (4-WAY, 3-WAY)		NEW CONDENSER WATER SUPPLY AND RETURN
	NEW CEILING RETURN GRILLE		NEW CONDENSATE DRAIN PIPE
	NEW THERMOSTAT		NEW CONDENSATE PUMP
	MANUAL VOLUME DAMPER		
	CABLE OPERABLE VOLUME DAMPER		

PROJECT NUMBER	10th FL. HVAC PLAN	UBS ONE CITY CENTER PORTLAND, ME 04101	M-2.10
SCALE	1/8"=1'-0"		
DATE	05.16.07		
PROJECT MANAGER			
PROJECT ARCHITECT			
DRAWN BY	SY		
CHECKED BY	RA		
CADD FILE			