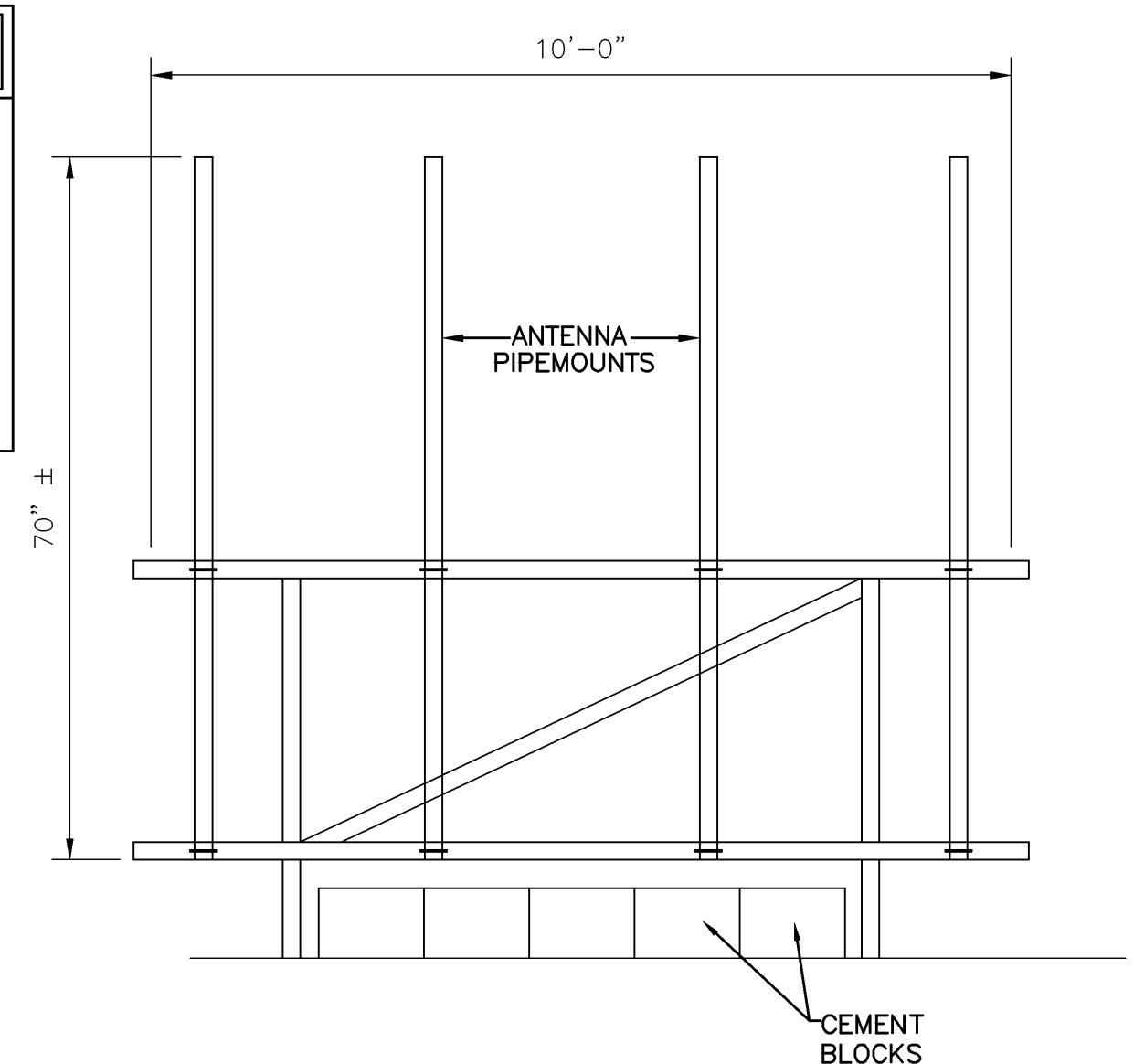
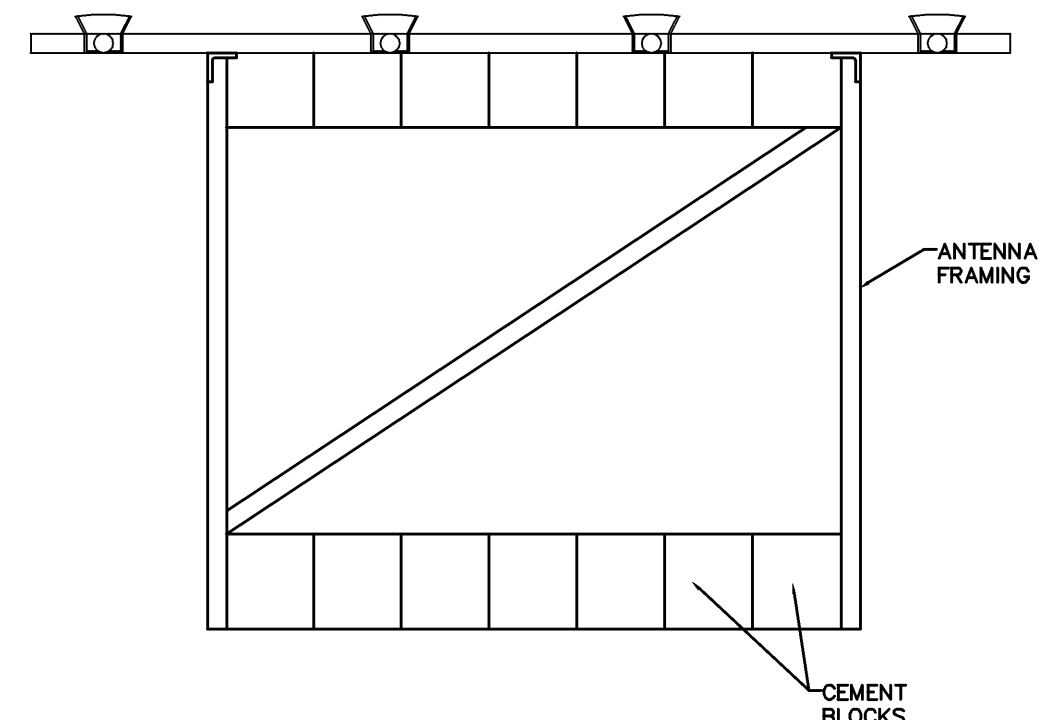


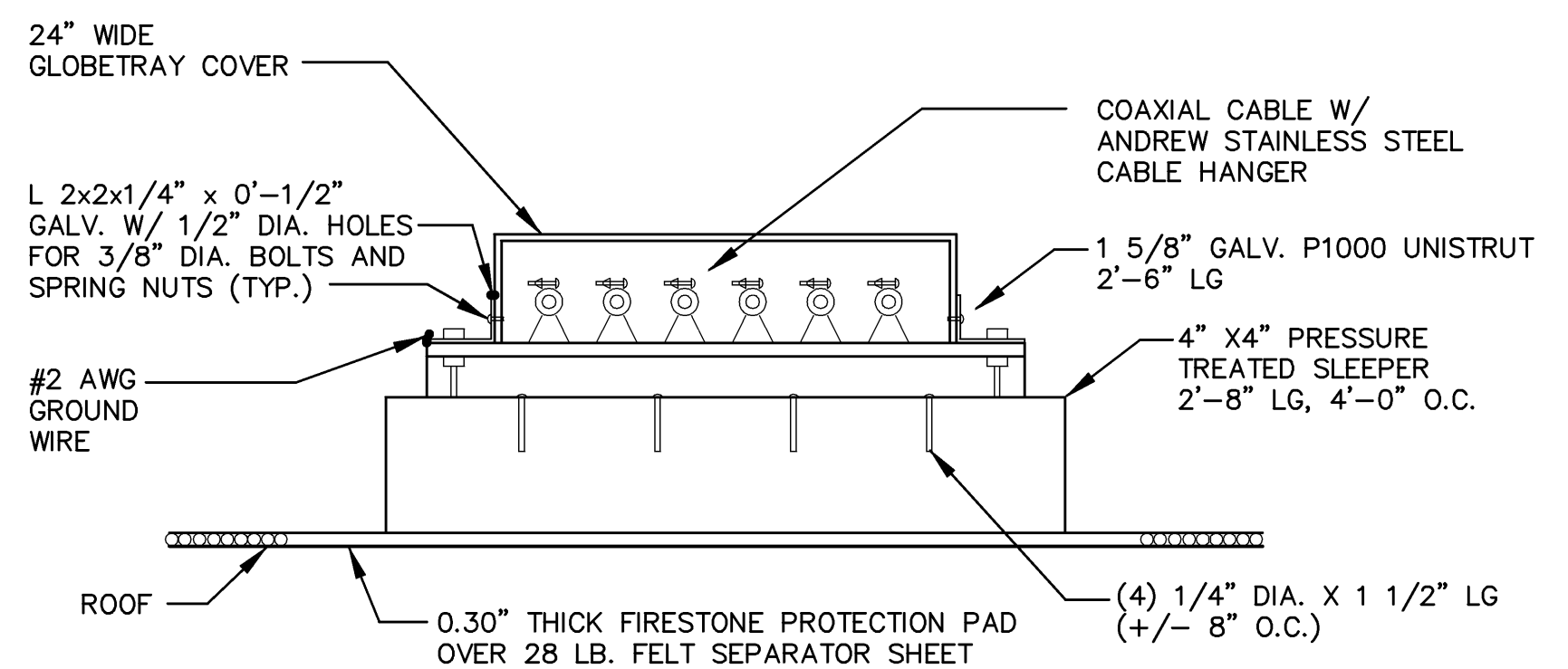
LEGEND	
---	PROPERTY LINE
- - - -	ABUTTING PROPERTY LINE
○	IRON PIN FOUND (AS NOTED)
○	UTILITY POLE
- - - -	EXISTING CONTOUR
⊖	STONE WALL
⊖	EXISTING TREE LINE



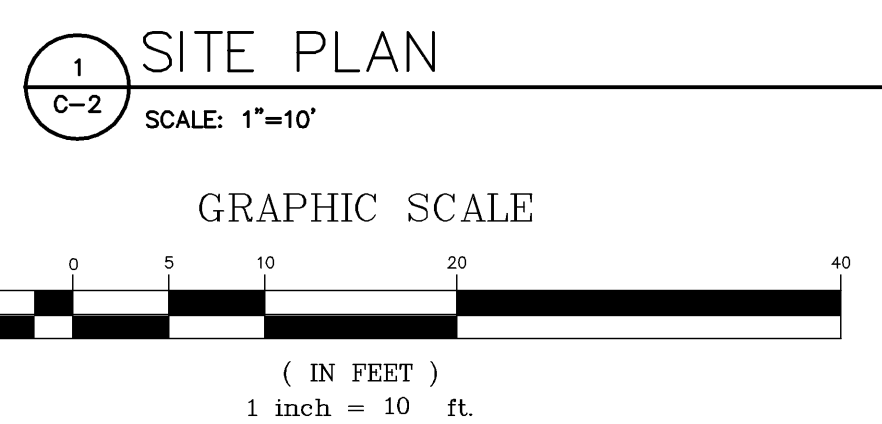
3 ANTENNA MOUNTING RACK ELEVATION  
SCALE: N.T.S.



2 ANTENNA FRAME PLAN  
SCALE: N.T.S.



4 COAX CABLE TRAY ROOFTOP SLEEPER  
SCALE: N.T.S.



1 SITE PLAN  
SCALE: 1"=10'

ANTENNA AND COAXIAL CABLE SCHEDULE										
ANTENNA MARK	SECTOR	ANTENNA	COAX CABLE FEED LOC	AZIMUTH (TRUE NORTH)	AZIMUTH (MAGNETIC)	RAD CENTER	COAXIAL CABLE LENGTH	COAXIAL CABLE	COLOR CODE	MECHANICAL DOWNTILT
A1	1	EMS FV65-17-04DP	BOTTOM	10°	26°	161'	95''	VXL7-50 7/8 ANDREW	R	2'
A2	1	EMS FV65-17-04DP	BOTTOM	10°	26°	161'	95'	VXL7-50 7/8 ANDREW	R(2X)	2'
B1	2	EMS FV65-17-04DP	BOTTOM	95°	111°	161'	165'	VXL7-50 1 5/8 ANDREW	W	2'
B2	2	EMS FV65-17-04DP	BOTTOM	95°	111°	161'	165'	VXL7-50 1 5/8 ANDREW	W(2X)	2'
G1	3	EMS FV65-17-04DP	BOTTOM	240°	256°	161'	20'	VXL7-50 1 5/8 ANDREW	B	2'
G2	3	EMS FV65-17-04DP	BOTTOM	240°	256°	161'	20'	VXL7-50 1 5/8 ANDREW	B(2X)	2'

**U.S. Cellular**  
The way people talk around here.  
288 Route 101, 2nd Floor, Bedford, NH 03110

**Oest Associates, Inc.**  
343 Corham Road - South Portland, ME 04106  
engineers architects surveyors construction managers  
TEL: (207) 761-1770  
FAX: (207) 774-1246  
OEST PROJ. NO: 413.47.01

SITE NAME: PORTLAND DOWNTOWN  
SITE NUMBER: 653417  
ADDRESS: ONE CITY CENTER  
PORTLAND, ME 04101  
DRAWING TITLE: SITE PLAN

REVISIONS		
No.	DESCRIPTION	DATE
0	FOR CONSTRUCTION	1-17-06

DESIGNED BY: MSD DATE: 1-17-06  
DRAWN BY: CBM SCALE: AS NOTED  
CHECKED BY: MSD PROJECT NO.: 413.47.01  
DRAWING NO.:



THIS DRAWING WAS CREATED FOR A FULL SIZE OF 22"x34". IT HAS BEEN REDUCED 50% FOR SUBMISSION PURPOSES.