

FURNITURE NOTES

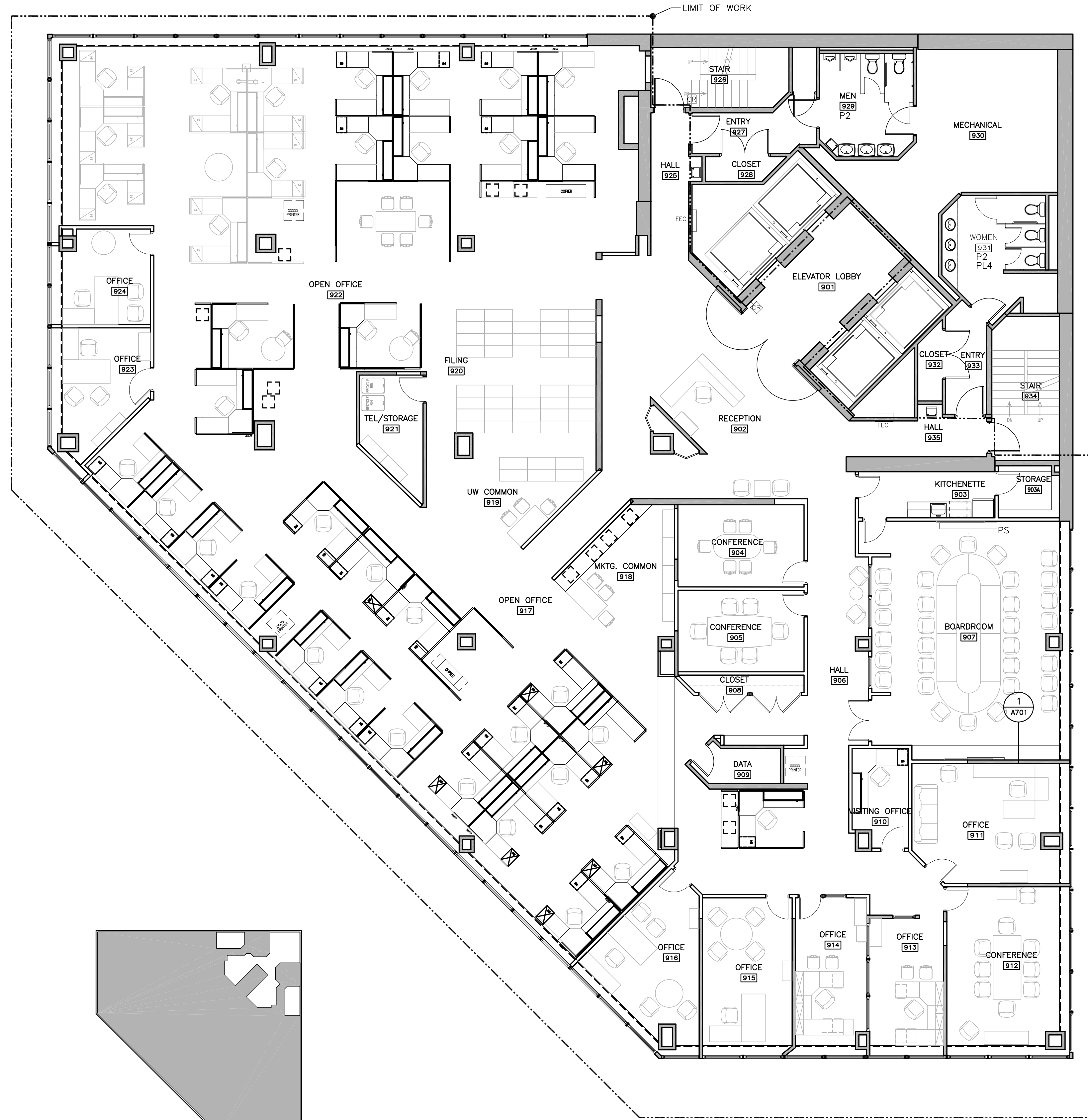
1. FURNITURE, FIXTURES AND EQUIPMENT SHOWN FOR REFERENCE ONLY. CONTRACTOR SHALL MAKE EVERY EFFORT TO COORDINATE THESE ELEMENTS WITH THE CONSTRUCTION TO THE GREATEST EXTENT POSSIBLE.
2. FURNITURE VENDOR TO VERIFY AND COORDINATE NEW FURNITURE LOCATIONS. FURNITURE SHOWN IS FOR DESIGN INTENT ONLY.
3. FILE CABINETS TO BE COORDINATED AND RELOCATED BY CONTRACTOR.
4. GENERAL CONTRACTOR TO COORDINATE EXACT LOCATION OF OUTLETS AND WHIPS WITH FURNITURE VENDOR.
5. REFER TO M.E.P. ENGINEERING DRAWINGS FOR ADDITIONAL INFORMATION.
6. CONTRACTOR TO INSTALL ANY WHITEBOARDS OR CEILING HUNG PROJECTION SCREEN PROVIDED BY TENANT.

OUTLET LEGEND

CA CARD READER

NOTE: ALL OUTLETS SHOWN ARE EXISTING TO REMAIN UNLESS OTHERWISE NOTED

"N" DENOTES NEW



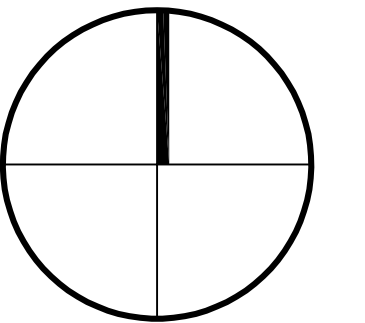
LOCUS PLAN

1 9TH FLOOR FURNITURE
1/8" = 1'-0"

COPYRIGHT (C) BY CUBELLIS ASSOCIATES INC. ALL RIGHTS RESERVED. NO PART OF THIS DRAWING OR ANY PARTS THEREOF MAY BE REPRODUCED OR TRANSMITTED IN ANY FORM OR BY ANY MEANS, ELECTRONIC, MECHANICAL, PHOTOCOPIING, RECORDING OR OTHERWISE, WITHOUT THE EXPRESS WRITTEN CONSENT OF CUBELLIS ASSOCIATES INC. ANY REVISIONS MADE TO THIS DOCUMENT WITHOUT THE WRITTEN PERMISSION OF CUBELLIS ASSOCIATES INC. SHALL RENDER IT INVALID AND UNUSABLE.

NO.	DATE	REVISIONS
B	07/07/03	ISSUED FOR PERMIT & PRICING
C	08/15/03	ISSUED FOR CONSTRUCTION

PROJECT NORTH



**MEDICAL MUTUAL
INSURANCE COMPANY**
1 CITY CENTER - PORTLAND, ME

OWNER

TITLE
9TH FLOOR
FURNITURE

SCALE
1/8" = 1'-0"

Cubellis Associates Inc.
Architecture Interiors Engineering
428 Fore Street, 3rd Fl.
Portland, ME 04101
Tel: 207-874-2775
Fax: 207-874-2775
www.cubellis.com

DRAWN BY
AT/CG/CN
CHECKED BY
MW/SP

DATE
1/6/03

A929

02278