

GENERAL CONTRACTOR ON RECORD:
 REAGAN IN COMPANY
 EARLE REAGAN
 CELL: 329-3441

SPECIAL APPLICATIONS:
 NO. DESCRIPTION:
 1. FIRE CAULK WALL PENETRATION WHERE REQUIRED TO MEET BUILDING SPECIFIC RATINGS.

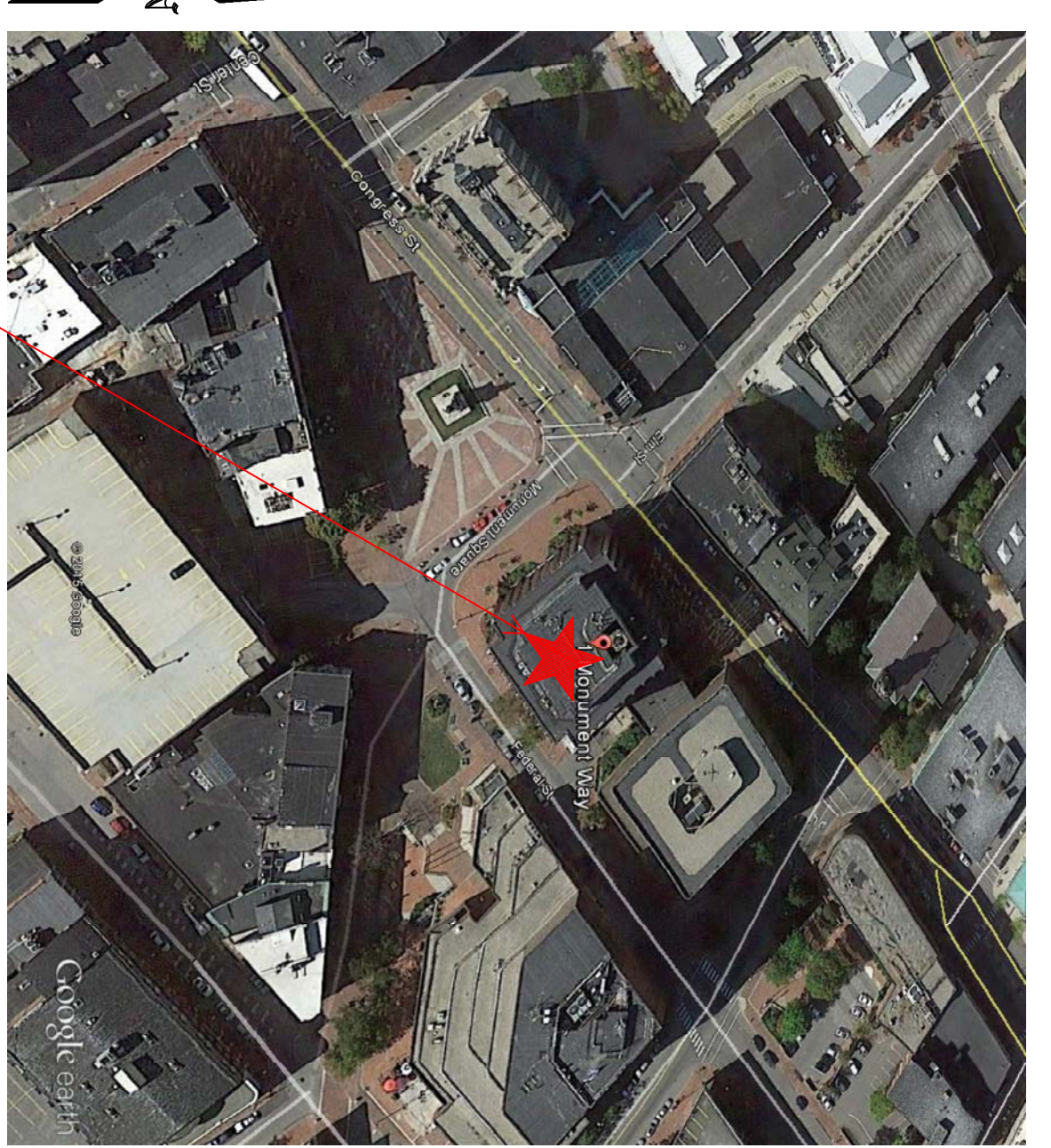
LEGEND:
 ○ IN PIPE RISER UP
 ○ IN PIPE RISER DOWN
 ○ POSITIONED NEW STEEL
 △ SYSTEM RISER
 ⊙ HYDRAULIC CALC. POINT

DESIGN NOTES:
 ALL PIPING 1/2" & LARGER TO BE SCHEDULE 40 WITH PROVED FINISH ON O.W. AS INDICATED.
 ALL PIPING 1/4" & SMALLER TO BE SCHEDULE 40 WITH PROVED FINISH ON O.W. AS INDICATED.
 POSITION, LOCATION, SPACING, AND USE OF SPRINKLERS SHALL BE IN ACCORDANCE WITH NFPA 13.
 POSITION, LOCATION, SPACING, AND USE OF HANGERS SHALL BE IN ACCORDANCE WITH NFPA 13.
 HYDRAULIC CALCULATION PROCEDURES HAVE NOT BEEN DONE IN ACCORDANCE WITH NFPA 13 (SEE PLANS FOR HYDRAULIC CALCULATION PROCEDURES AND SYSTEM HEADINGS).
 HIGH HEAT FIRE PROTECTION IS TO BE DONE WORK AT EXISTING PIPING.
 DIMENSIONS AND LOCATIONS GIVEN FOR SPRINKLER HEADS TO BE IN ACCORDANCE WITH NFPA 13.
 OWNER TO PROVIDE ADEQUATE HEAT THROUGHOUT ACTUAL FIELD CONDITIONS TO ASSURE PROPER OPERATION OF SPRINKLERS.
 ALL MECHANICAL, ELECTRICAL AND PLUMBING TRADES TO COORDINATE THEIR WORK WITH ALL OTHER TRADES.
 ALL ELECTRIC WORK IS TO BE DONE BY OTHERS.

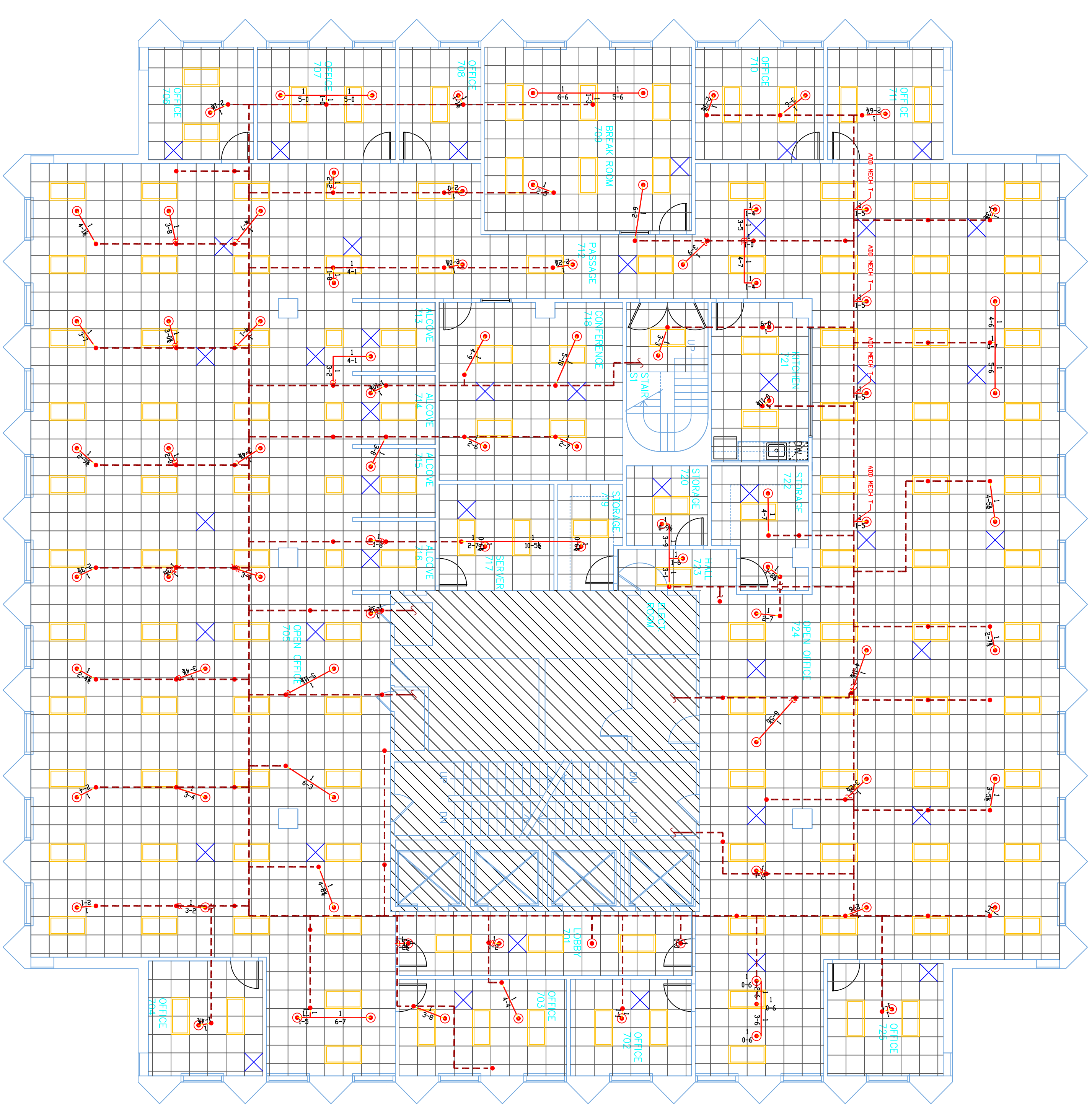
HEAD LEGEND:
 GLOBE
 MODEL GQ5601
 173.7185"
 K=3.58
 1/2" WHITE PENDENT SEMI-RECESSED ESC.
 LIGHT HAZARD 225 SQ.FT. MAX
 ORDNANCE HAZARD 150 SQ.FT. MAX

OR APPROVED EQUAL
 TOTAL HEADS ON THIS SHEET: 173
 SCALE 1/8"=1'-0"
 REVISIONS:
 NO. DATE: DESCRIPTION:
 DATE: JUNE 09, 2015
 DESIGNER: DJ DENNIN
 CHECKED BY: JESSICA FERRELLIN
 INCH LEVEL: III 129801 RAN5908
 LOCATION:
 1 MONUMENT SQUARE
 PORTLAND, ME

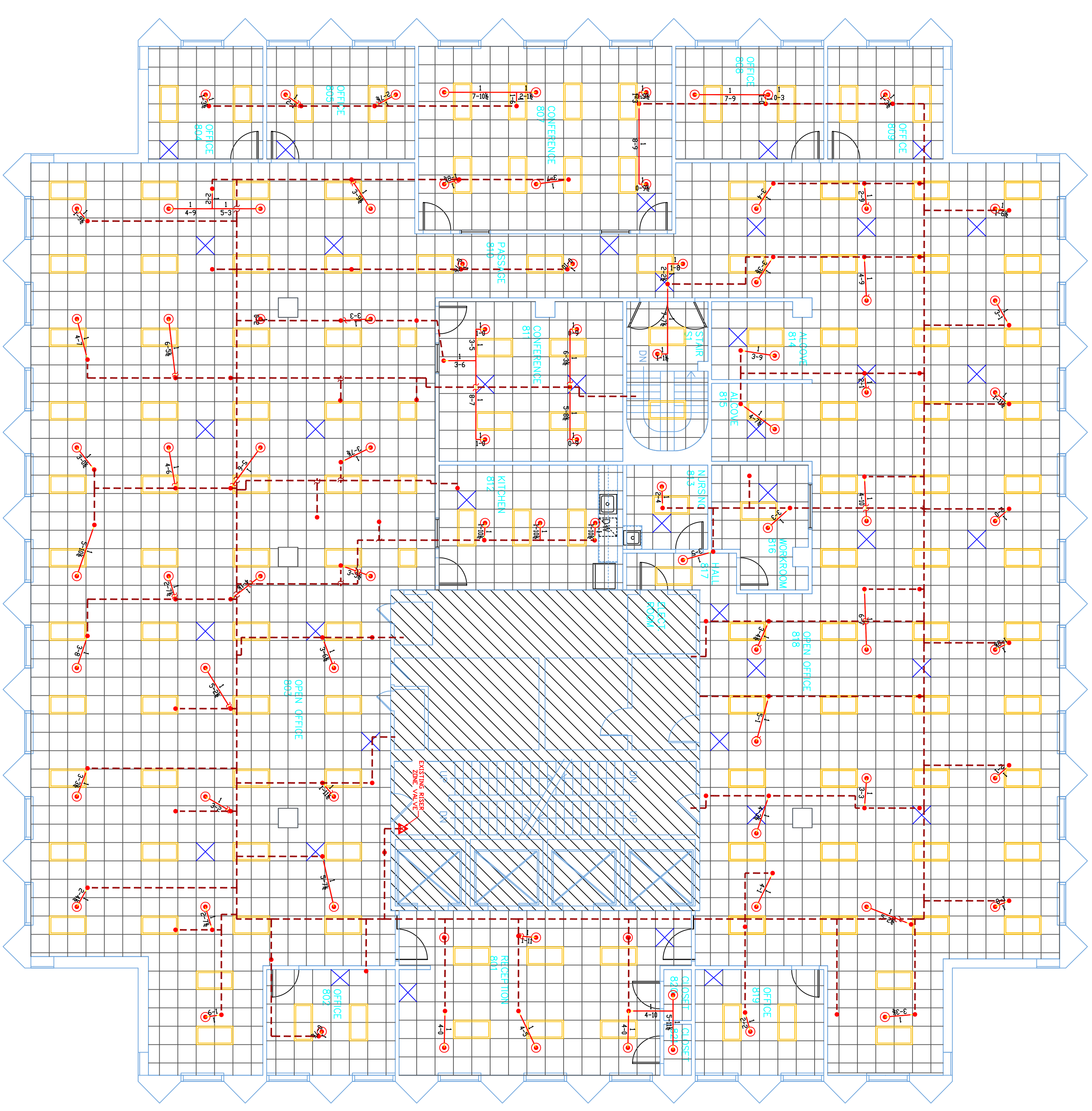
DRAWING TITLE:
 BLUE TARP FINANCIAL
 7TH AND 8TH FLOORS
 FIRE PROTECTION PLAN
 (NFPA 13 2010ed.)
 DRAWING NO.:
 FP-01



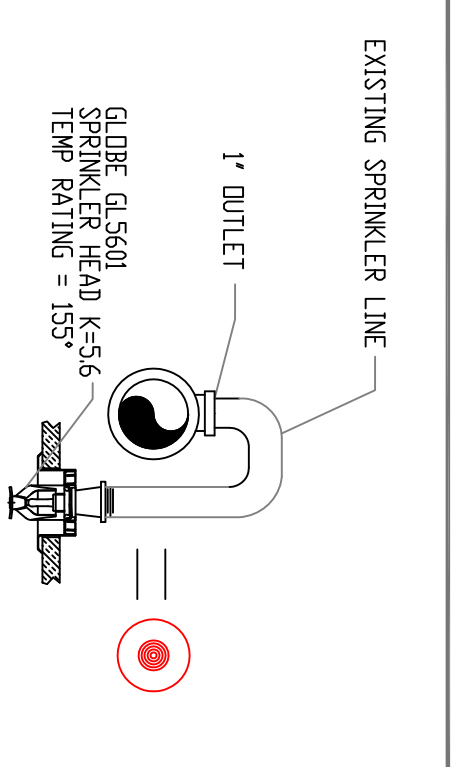
SITE PLAN
 SCALE - N.T.S.



HATCHED AREAS ARE NOT IN CONTRACT
SEVENTH FLOOR
 SCALE - 1/8"=1'-0"
 TOTAL PROTECTED AREA = 12,000 SQFT



HATCHED AREAS ARE NOT IN CONTRACT
EIGHTH FLOOR
 SCALE - 1/8"=1'-0"
 TOTAL PROTECTED AREA = 12,000 SQFT



TYPICAL HEAD DETAIL
 SCALE - N.T.S.

PROJECT DESCRIPTION
 BUILDING CONST:
 THE BUILDING IS TO LEVELS CONSTRUCTED OF STEEL AND CONCRETE FRAMING, FIBERGLASS INSULATION, AND STEEL PILING ON LEVELS SHOWN.
 BUILDING OCCUPANCY:
 THE SEVENTH AND EIGHTH FLOOR WAS BUILT & DESIGNED FOR OFFICE TYPE USAGE.
 SPRINKLER SYSTEM DESIGN:
 THIS IS AN EXISTING WET SYSTEM THROUGHOUT COMBINED SPRINKLER/STANDPIPE SYSTEM. THE SPRINKLER SYSTEM WAS DESIGNED TO MEET CODES REGARDING NFPA 13 2010ed. SYSTEM.
 OUR SCOPE OF WORK INCLUDES REMOVING THE EXISTING SYSTEM TO ACCOMMODATE THE REVISED FLOOR PLAN AND NEW DENIGS. ALL EXISTING PIPING ARE TO BE LEFT AT THE TOP OF THE LINES AND LOOPED UP TO THE ROOF.
 ALL OFFICE AREAS AND BREAKROOMS ARE LIGHT HAZARD OCCUPANCY. STORAGE ROOMS AND KITCHENS ARE ORDINARY HAZARD GROUP 1.