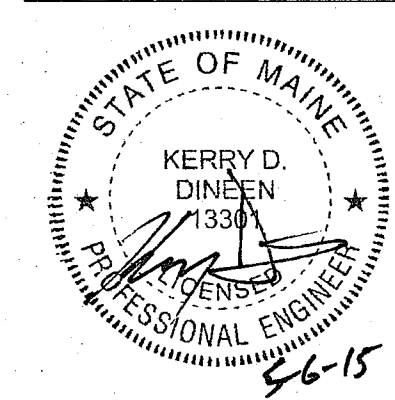
	ARCHITECTURE	144 Fore Street/P.O. Box 618
	ENGINEERING	Portland, Maine 04104
	PLANNING	tel. (207) 772-3846
	INTERIOR DESIGN	fax. (207) 772-1070
	COMMISSIONING	www.smrinc.com

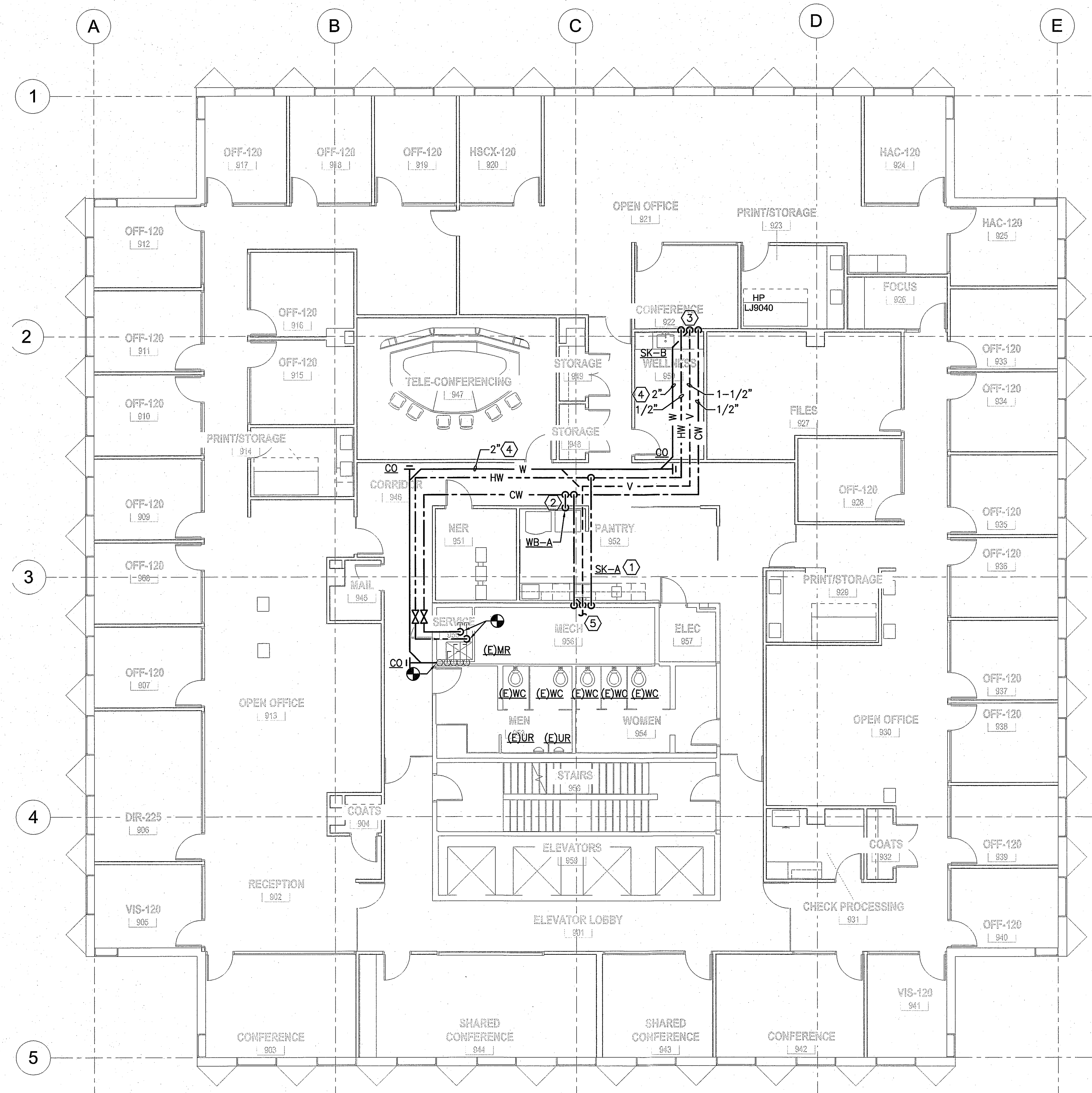


NOTES:

1. SEE SHEET PL001 FOR LEGEND AND ABBREVIATIONS.

KEYED NOTES:

- ① 1/2" CW AND 1/2" HW DROP.
 1-1/2" V-RISE AND 2" W-DN.
 ROUTE 1/2" CW AND 1/2" HW-EACH TO SK-A. ROUTE 1/2" HW TO DISHWASHER, SEE DETAIL 1/PL501. ROUTE 1/2" CW TO ICEMAKER, SEE DETAILS 2/PL501 AND 3/PL501.
- ② 1/2" CW-DROP TO WB-A.
- ③ 1/2" CW AND 1/2" HW-DROP.
 1-1/2" V-RISE AND 2" W-DN.
- ④ WASTE PIPING IN CEILING OF FLOOR BELOW.
- ⑤ ROUTE NEW 1-1/2" VENT PIPING TO NEAREST 2" VENT MAIN OR LARGER AND CONNECT.



① NINTH FLOOR PLAN
 1/8" = 1'-0"

REVISIONS

BANK OF AMERICA - 9TH & 10TH FLOORS

BANK OF AMERICA
 1 MONUMENT SQUARE
 Portland, ME

TITLE
 NINTH FLOOR PLUMBING PLAN

DATE **JOB NO.**
 May 11, 2015 I5051.00

DRAWING NO. **PL101**

ISSUED FOR CONSTRUCTION

