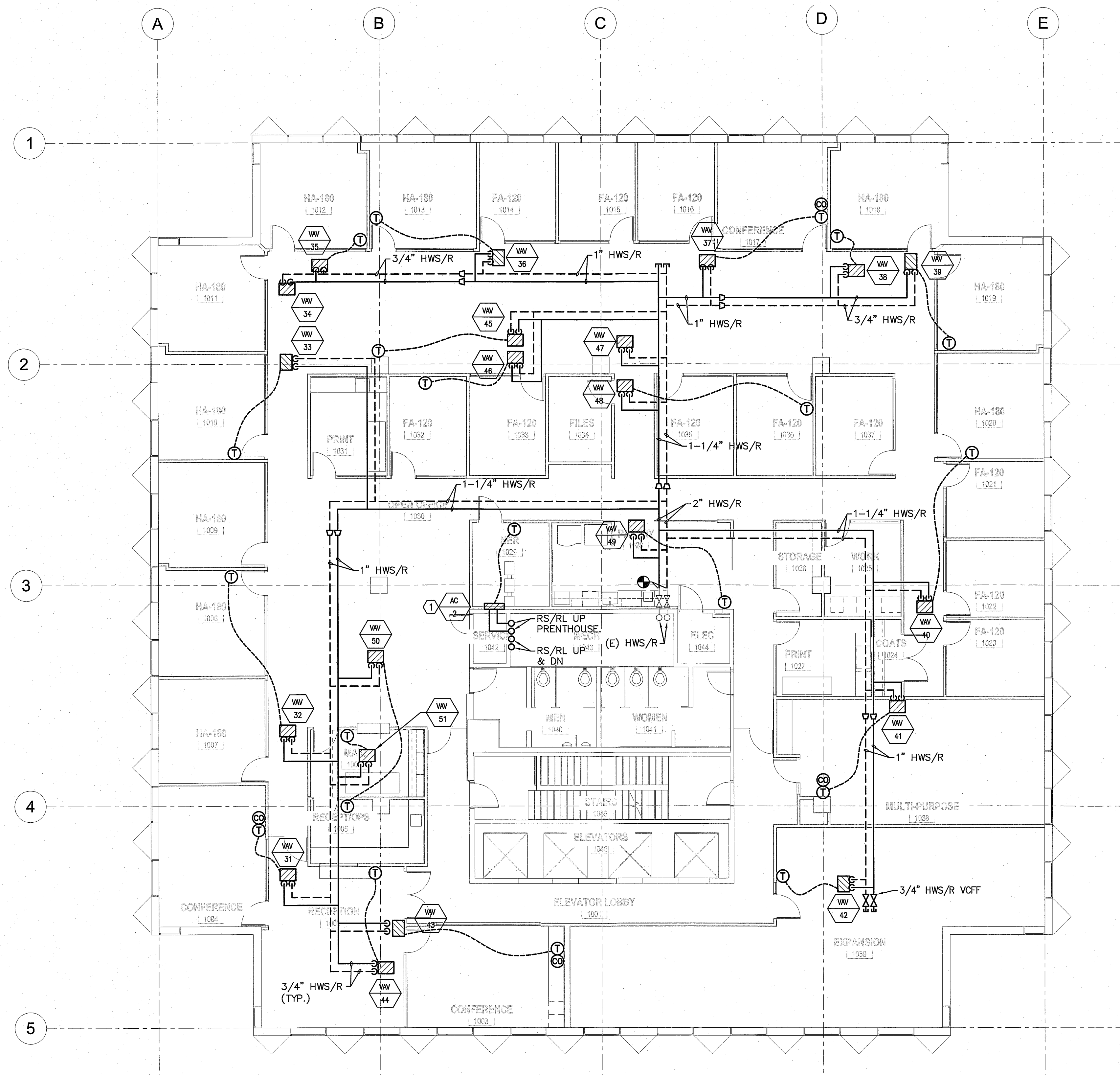


NOTES:

1. SEE SHEET M-001 FOR LEGEND AND ABBREVIATIONS.

KEYED NOTES:

① ROUTE 3/4" CONDENSATE DRAIN TO WITHIN 2" OF MOP SINK FLOOD RIM. TERMINATE AT DOWN TURNED ELBOW.



① TENTH FLOOR PLAN
1/8" = 1'-0"

REVISIONS

BANK OF AMERICA - 9TH & 10TH FLOORS

BANK OF AMERICA
1 MONUMENT SQUARE
Portland, ME

TITLE
TENTH FLOOR HVAC PIPING PLAN

DATE	JOB NO.
May 11, 2015	15051.00

DRAWING NO. **MPI02**

ISSUED FOR CONSTRUCTION

