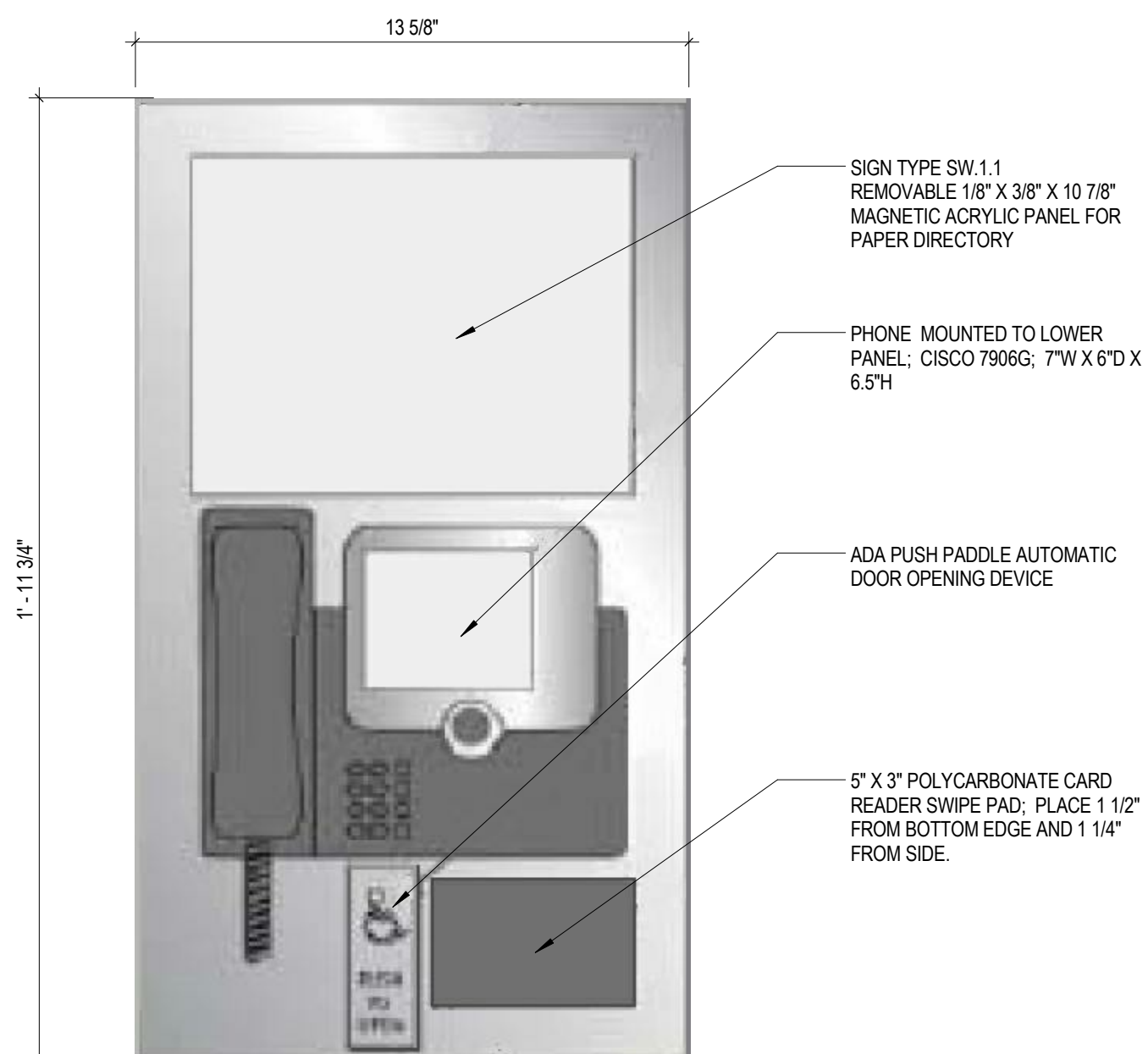
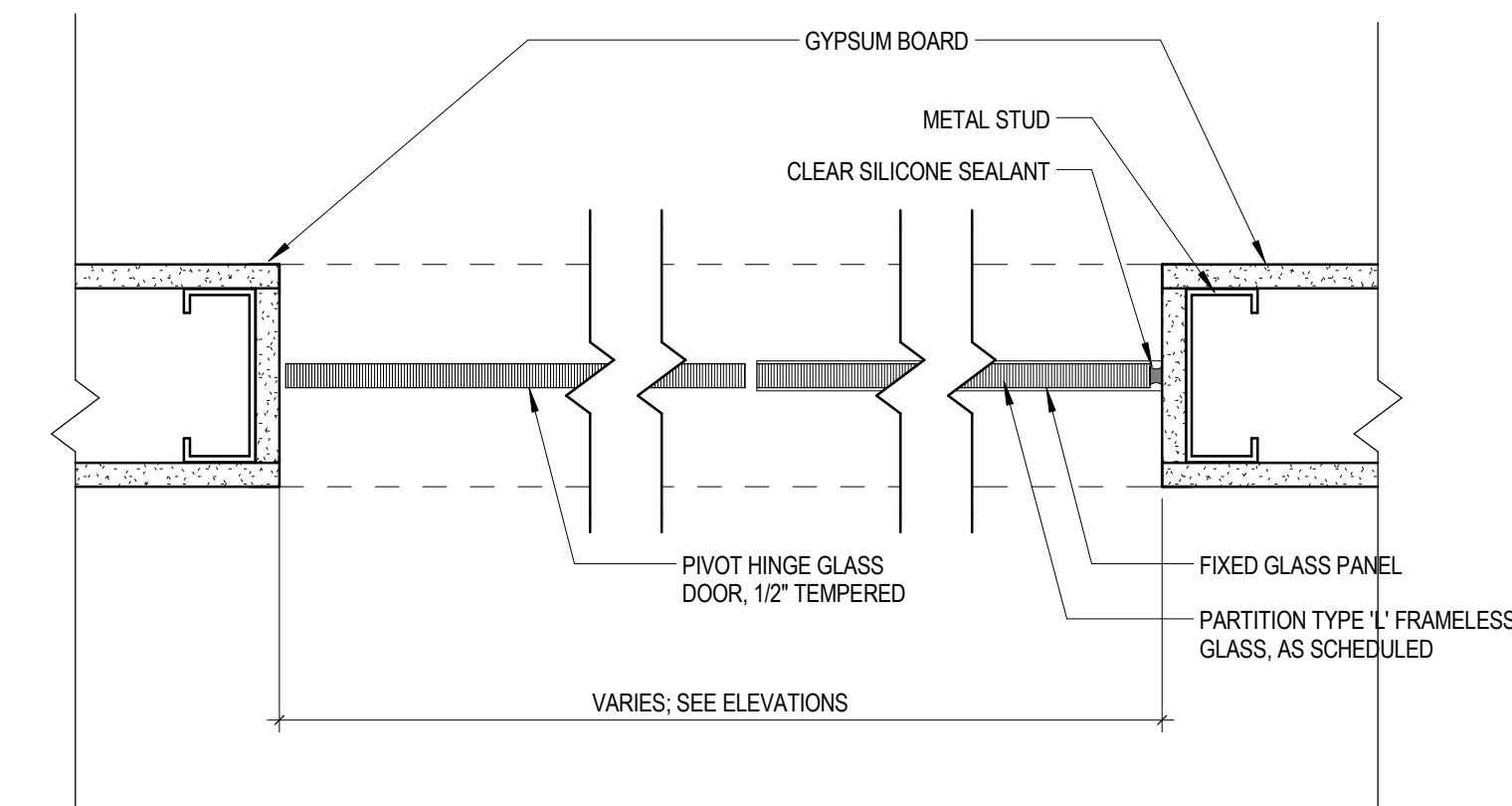


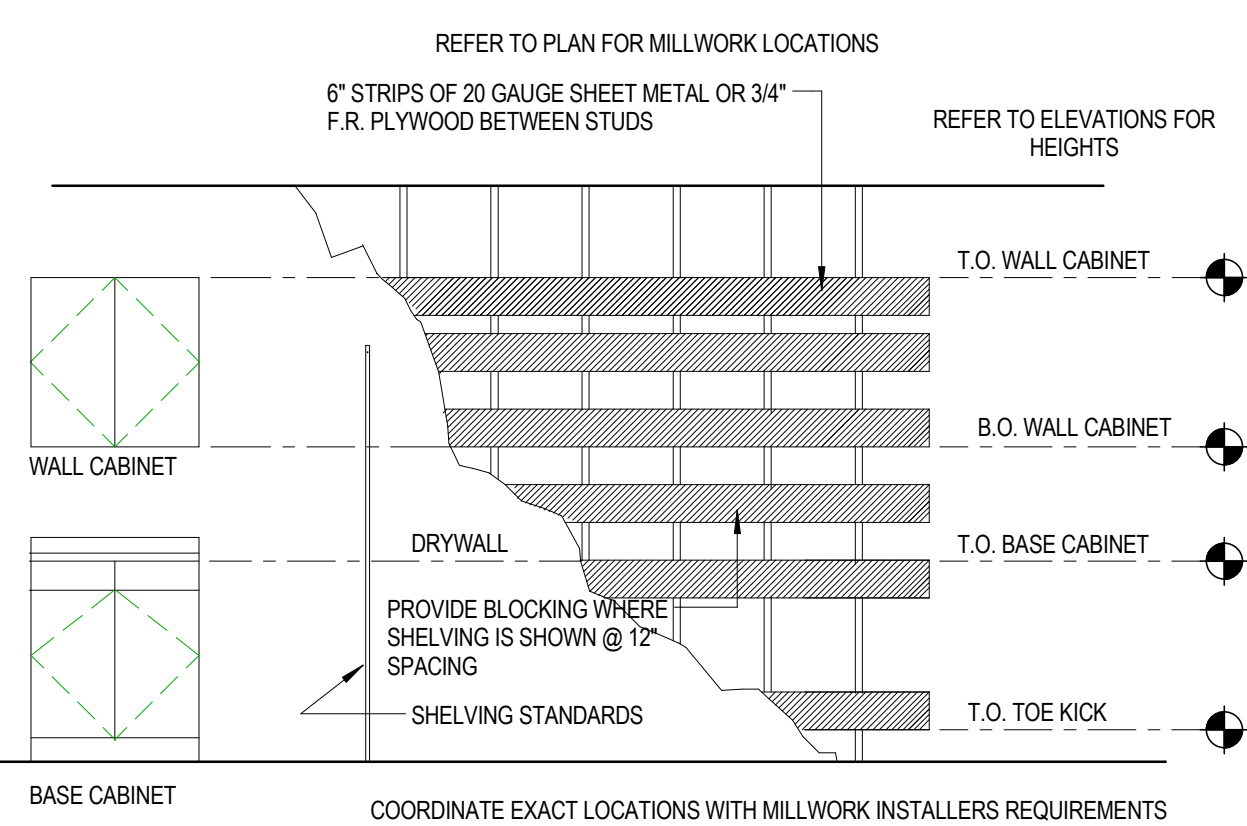
11 LCD MOUNTING BRACKET
1 1/2" = 1'-0"



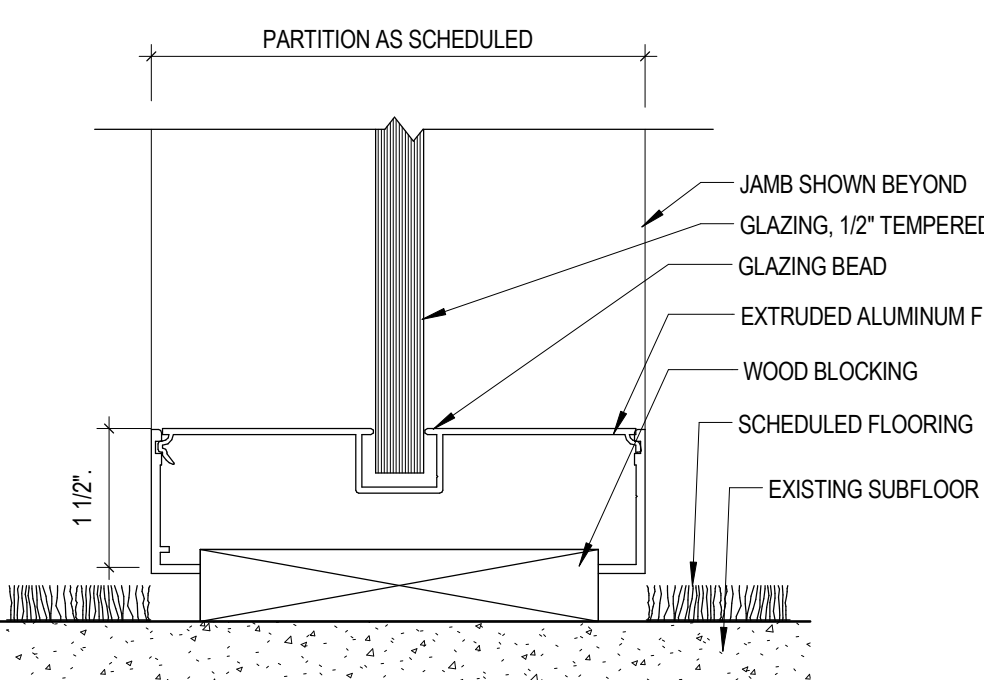
8 SECURE ENTRY DIRECTORY DETAIL
3" = 1'-0"



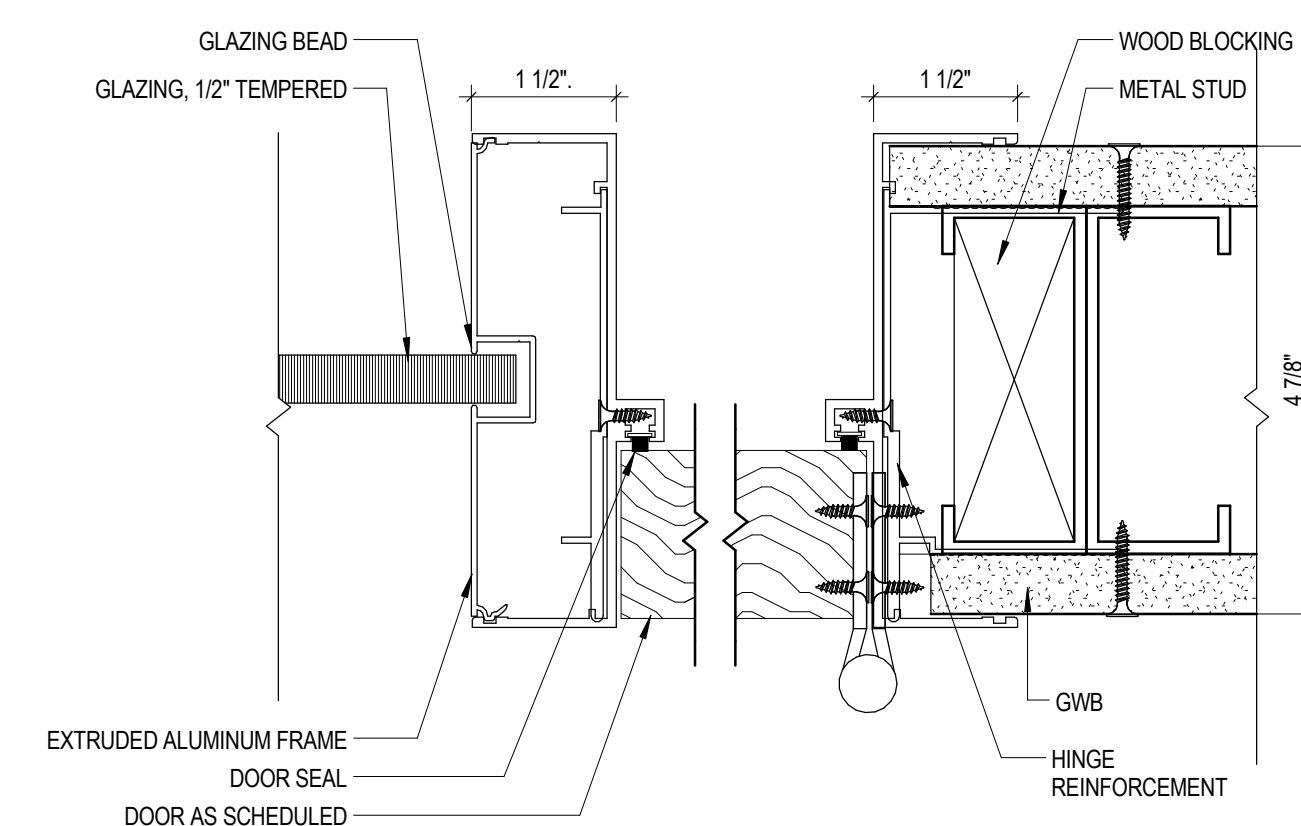
4 TYP. FRAMELESS SIDELIGHT OPENINGS & DOOR JAMB DETAIL
3" = 1'-0"



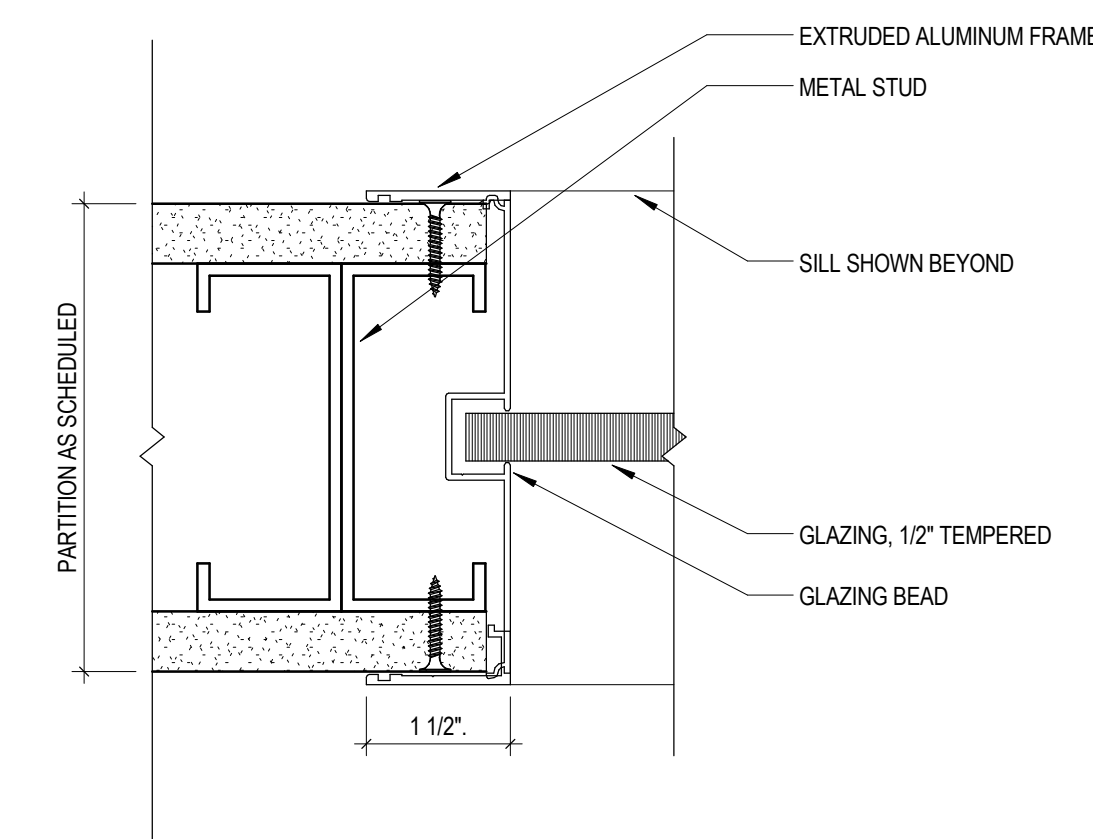
10 BLOCKING DETAIL AT MILLWORK & SHELVING
3" = 1'-0"



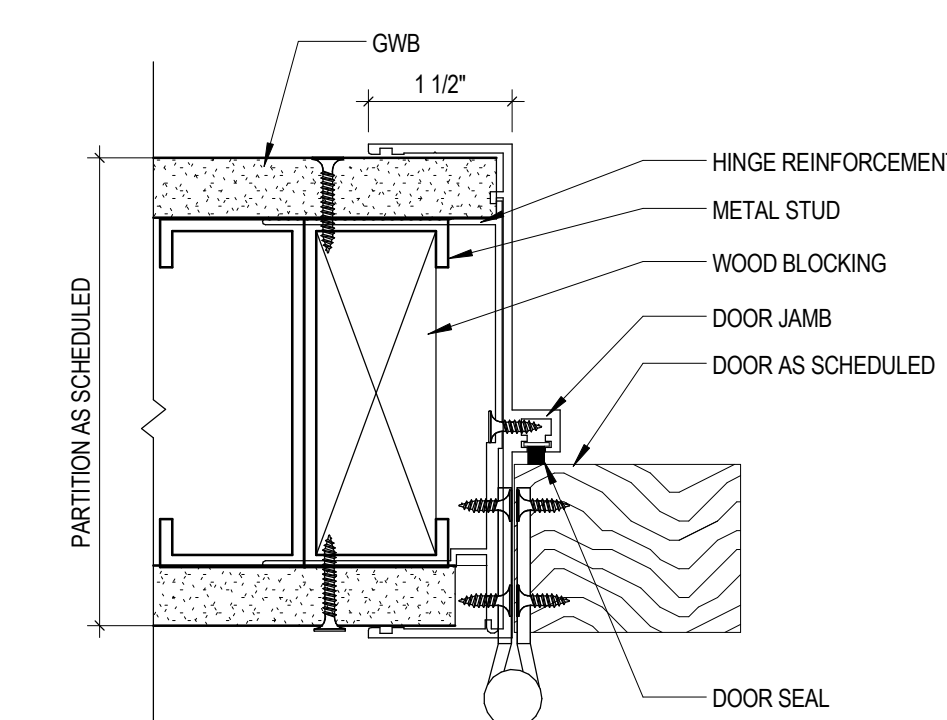
7 TYP. DETAIL AT GLAZING SILL - ALUM. FRAME
6" = 1'-0"



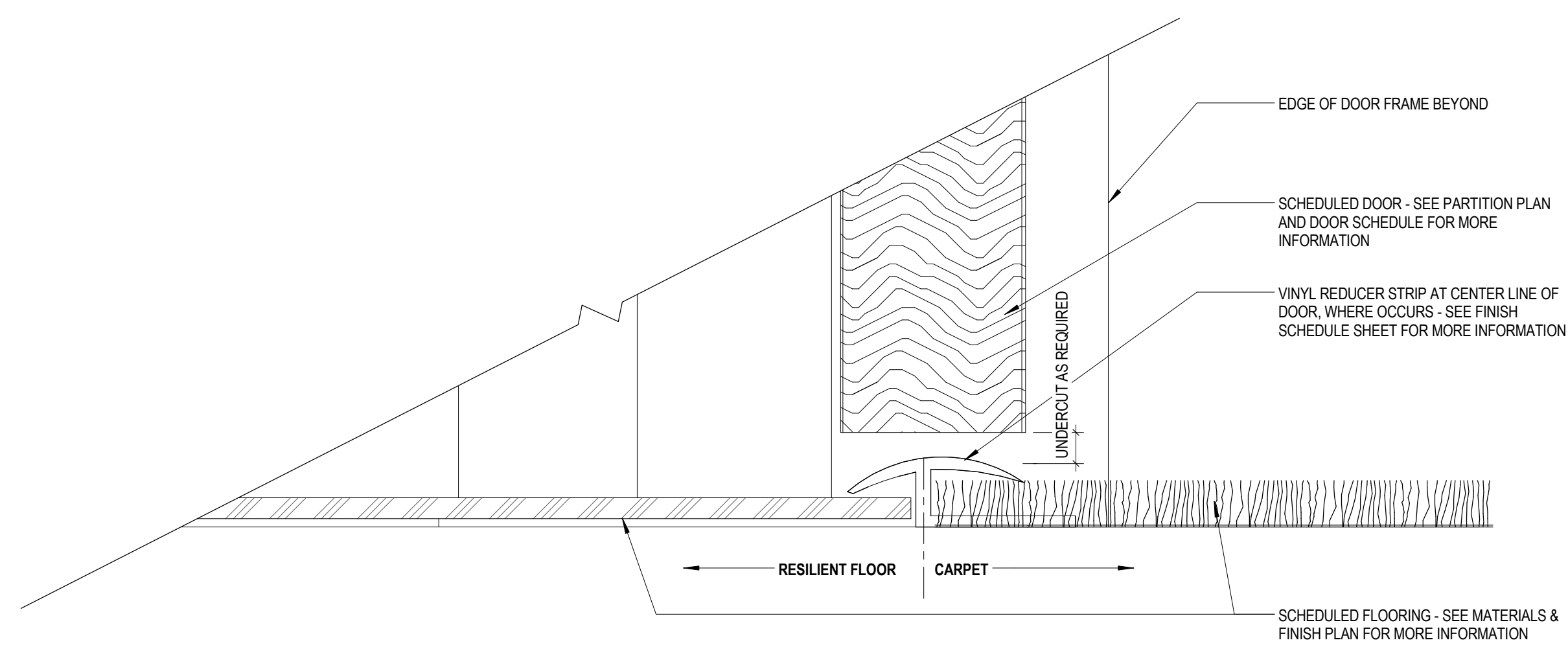
3 TYP. DETAIL AT DOOR/SIDELIGHT - ALUM. FRAME
6" = 1'-0"



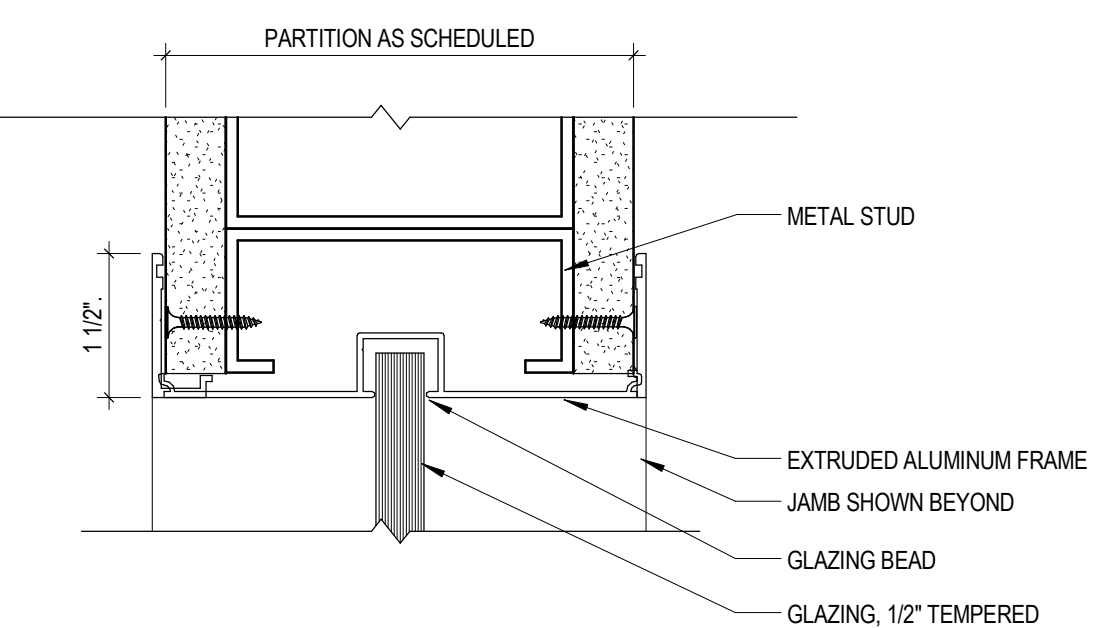
6 TYP. DETAIL AT GLAZING JAMB - ALUM. FRAME
6" = 1'-0"



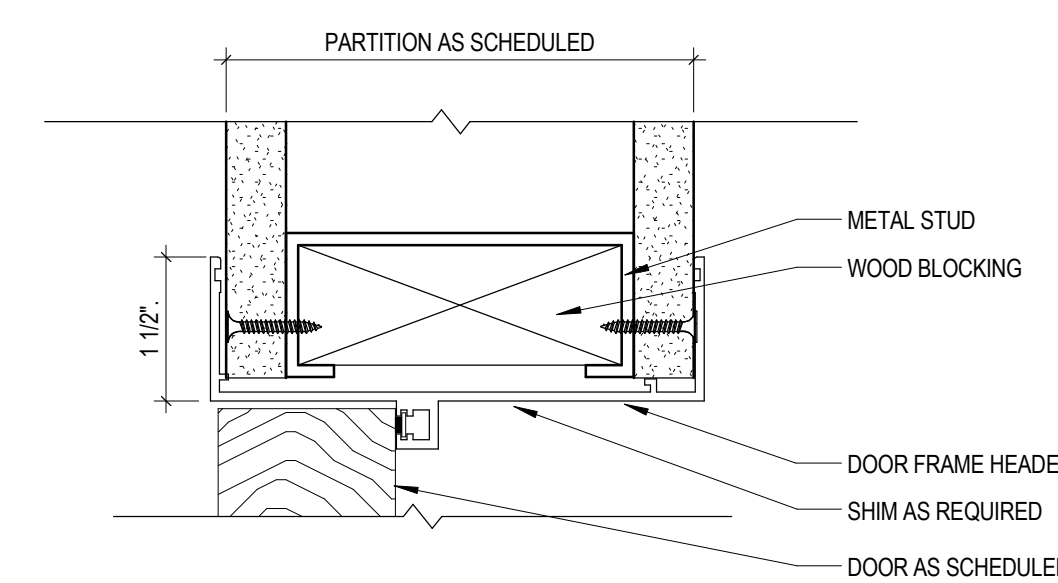
2 TYP. DETAIL AT DOOR JAMB - ALUM. FRAME
6" = 1'-0"



9 RESILIENT FLOORING TO CARPET TRANSITION UNDER DOOR
12" = 1'-0"



5 TYP. DETAIL AT GLAZING HEAD - ALUM. FRAME
6" = 1'-0"



1 TYP. DETAIL AT DOOR HEAD - ALUM. FRAME
6" = 1'-0"

REVISIONS

BANK OF AMERICA - 9TH & 10TH FLOORS

BANK OF AMERICA
1 MONUMENT SQUARE
Portland, ME

TITLE
TYPICAL DETAILS

DATE JOB NO.
May 11, 2015 15051.00

DRAWING NO. **A8.04**

ISSUED FOR CONSTRUCTION