

**NOTE:**

1. SEE SHEET E-001 FOR LEGEND AND GENERAL NOTES.

**KEYED NOTES:**

- ① EXISTING RAF #1 TO BE REMOVED AND REPLACED WITH NEW FAN. EXISTING ARROW HART MOTOR CONTROLLER WHICH CONTROLS RAF #1 TO BE REMOVED AND RETURNED TO OWNER. MODIFY EXISTING WIRING FROM MCC 0934, TO NEW VFD INSTALLED IN THE NEW MECHANICAL ROOM. VFD FOR RAF-1 TO BE SUPPLIED BY MECHANICAL CONTRACTOR.
- ② VFD FOR AHU #6 SUPPLY FAN TO BE FURNISHED BY MECHANICAL CONTRACTOR AND INSTALLED BY ELECTRICAL CONTRACTOR.
- ③ VFD FOR AHU #6 RETURN FAN TO BE FURNISHED BY MECHANICAL CONTRACTOR AND INSTALLED BY ELECTRICAL CONTRACTOR.
- ④ VFD FOR AHU #3 - SUPPLY FAN TO BE FURNISHED BY MECHANICAL CONTRACTOR AND INSTALLED BY ELECTRICAL CONTRACTOR.

**KEYED NOTES:**

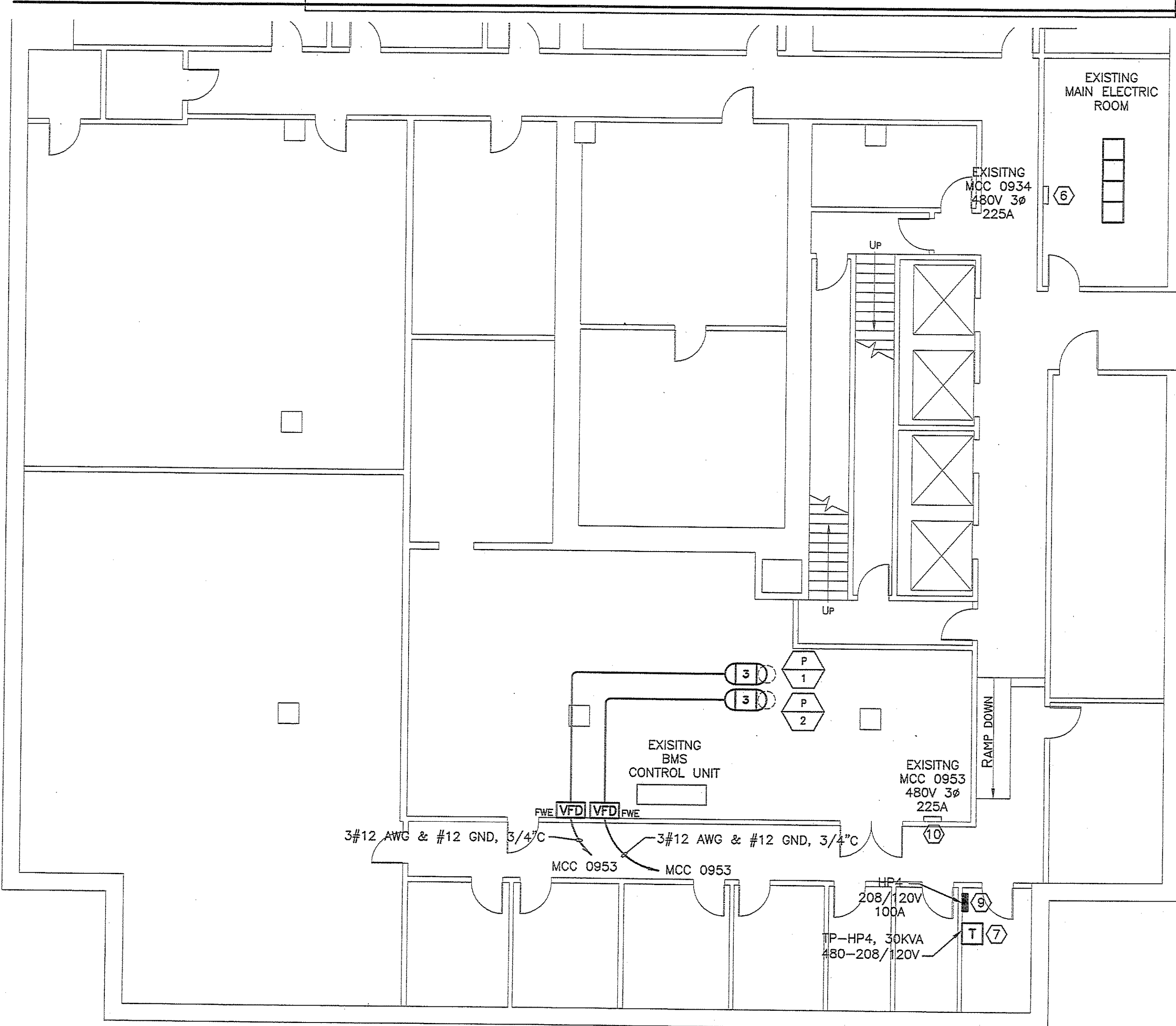
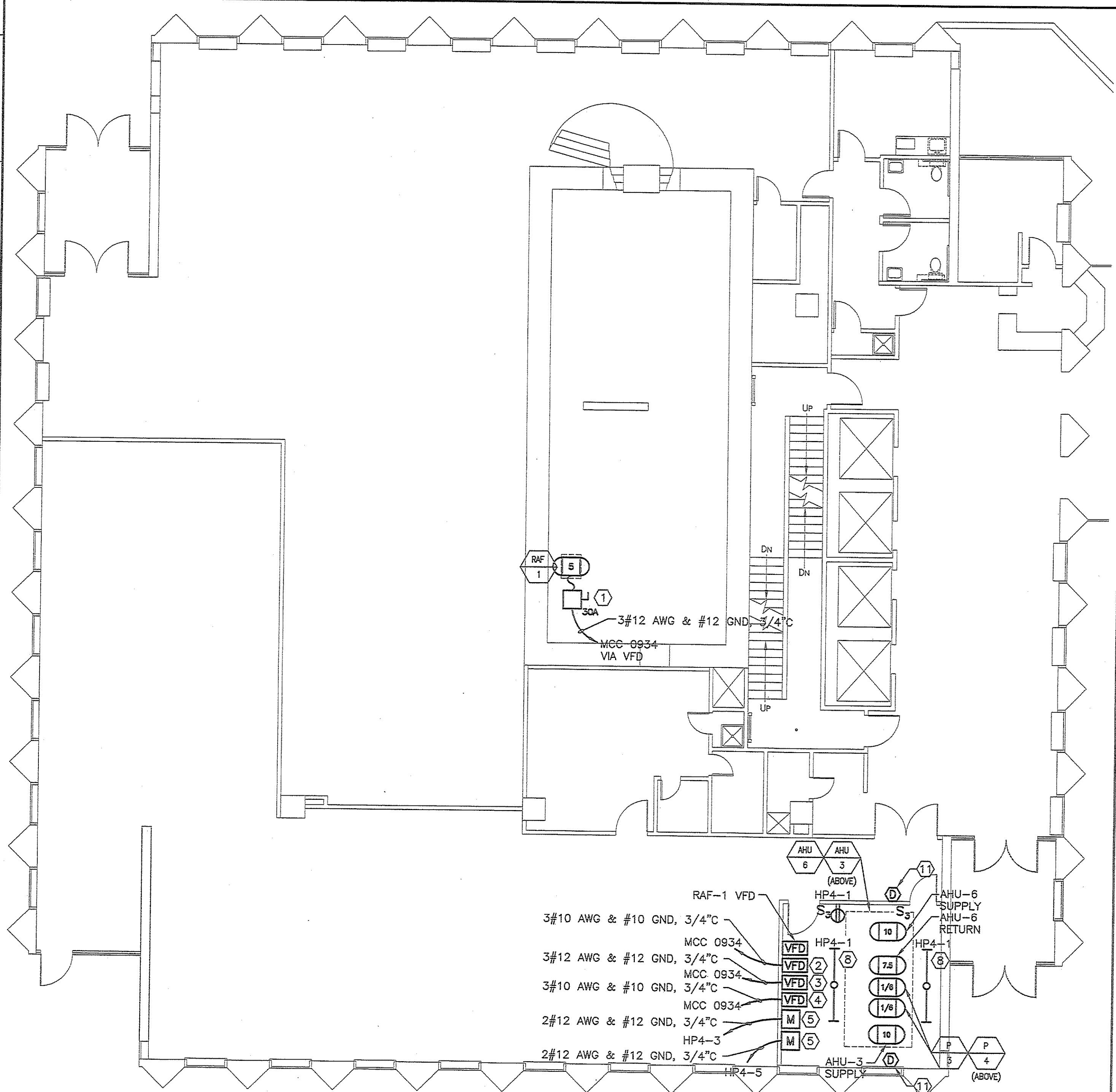
- ⑤ FURNISH AND INSTALL A MANUAL MOTOR STARTER FOR PUMPS P-3 AND P-4.
- ⑥ IN EXISTING FUSED SWITCH DISTRIBUTION PANEL PROVIDE NEW FEEDS FOR RAF-1, AHU-3 SUPPLY FAN, AHU-6 SUPPLY FAN, AHU-6 RETURN FAN. NEW FUSES TO BE 20A FOR RAF-1, 25A FOR AHU-6 RETURN FAN AND 30A FOR AHU-3 AND AHU-6 SUPPLY FANS. IN ADDITION PROVIDE NEW 50A FUSES IN A SWITCH TO FEED NEW TRANSFORMER T-HP4.
- ⑦ WIRING FOR NEW TRANSFORMER T-HP4 FROM EXISTING FUSED DISTRIBUTION PANEL TO BE 3#8 AWG & #10 GND, 3/4" C.
- ⑧ FURNISH AND INSTALL TWO 8' FLUORESCENT STRIP LIGHTS WITH WIRE GUARDS AND NEW SWITCHES TO CONTROL LIGHTS.
- ⑨ FURNISH AND INSTALL NEW PANELBOARD FED FROM TRANSFORMER T-HP4. WIRING FROM TRANSFORMER TO PANELBOARD TO BE 4#2 AWG & #8 GND, 1-1/4" C.
- ⑩ IN EXISTING FUSED SWITCH DISTRIBUTION PANEL PROVIDE NEW FEEDS FOR PUMPS P-1 AND P-2. NEW FUSES TO BE 20A FOR BOTH PUMP FEEDS.

**KEYED NOTES:**

- ⑪ FURNISH AND INSTALL NEW DUCT SMOKE DETECTORS FOR AHU-3 AND AHU-6 SUPPLY DUCTS. DUCT SMOKE DETECTORS TO SHUT DOWN ALL FANS ASSOCIATED WITH THE AIR DISTRIBUTION SYSTEM AND REPORT A SUPERVISORY SIGNAL TO THE BUILDING FIRE ALARM CONTROL PANEL. DUCT SMOKE DETECTORS TO BE PROVIDED WITH REMOTE TEST STATION. PROVIDE SMOKE DETECTOR, SAMPLING TUBE, HOUSING, WIRING, CONDUIT, PROGRAMMING AND EQUIPMENT REQUIRED FOR A COMPLETE AND OPERABLE SYSTEM.

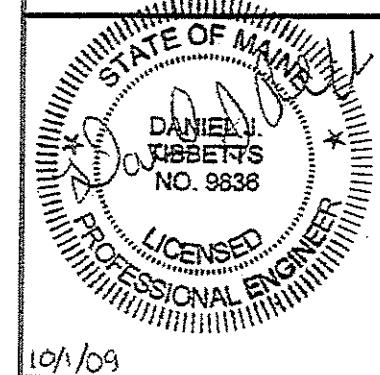
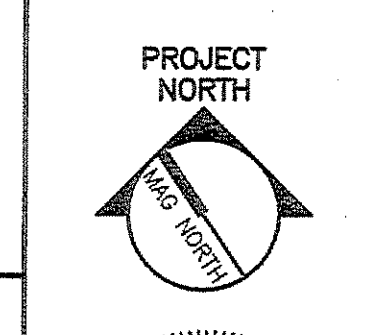
DIRECTORY	KVA LOAD			CKT NO.	BKR AMPS	A	B	C	BKR AMPS	CKT NO.	KVA LOAD			DIRECTORY
	A	B	C								A	B	C	
LGT & RECPT AHU 3 & 6 MECH RM	0.5			1	20				20	2				SPARE
PUMP P-3		0.5		3	20				20	4				SPARE
PUMP P-4			0.5	5	20				20	6				SPARE
SPARE				7	20				20	8				SPARE
SPARE				9	20				20	10				SPARE
SPARE				11	20				20	12				SPARE
SPACE				13						14				SPACE
SPACE				15						16				SPACE
SPACE				17						18				SPACE
SPACE				19						20				SPACE
SPACE				21						22				SPACE
SPACE				23						24				SPACE
SPACE				25						26				SPACE
SPACE				27						28				SPACE
SPACE				29						30				SPACE
SPACE				31						32				SPACE
SPACE				33						34				SPACE
SPACE				35						36				SPACE
SPACE				37						38				SPACE
SPACE				39						40				SPACE
SUB-TOTAL				0.5	0.5	0.5	NEUTRAL BUS			SUB-TOTAL				
							GROUND BUS							
VOLTAGE:		208/120	3 PHASE	4 WIRE	100 AMP BUS	TOTAL KVA	A	0.5	PANEL NO.	HP4				
MAIN BREAKER:						100 AMP TRIP	TOTAL KVA	B	0.5	LOCATION	AHU 3 & 6 MACHINE ROOM			
MOUNTING:		SURFACE				TOTAL KVA	C	0.5						
SC RATING:		10,000				TOTAL KVA	1.5							

NOTES: 1. PROVIDE COPPER BUS, COPPER GROUND BUS, HINGED DOOR AND FULLY RATED BOLT-ON BREAKERS



144 Fore Street P.O. Box 618  
Portland, Maine 04104  
Tel: (207) 772-3846  
Fax: (207) 772-1070  
www.smarline.com

ARCHITECTURE  
ENGINEERING  
PLANNING  
INTERIOR DESIGN  
COMMISSIONING



FINARD PROPERTIES INC. - 1 MONUMENT SQUARE  
KEY BANK AND LOBBY RENOVATION  
PORTLAND, MAINE

ISSUED FOR CONSTRUCTION  
10-1-09

CURRENT ISSUE STATUS:

REV	DESCRIPTION	DATE
0	ISSUED FOR CONSTRUCTION	10-1-09

GRAPHIC SCALE: 0" = 1"

SCALE: 1/8" = 1'-0"

PROJECT MANAGER: ILH  
IC/DRAWN BY: BAL/CDS  
A/E OF RECORD: DJT  
CAD FILE: 08052-EP101  
PROJECT NO: 08052-06  
DATE: 10-1-09

SHEET-TITLE:  
GROUND FLOOR AND BASEMENT POWER PLAN

SHEET No. EP101

**A1 GROUND FLOOR PLAN**  
1/8" = 1'-0"

**A9 BASEMENT FLOOR PLAN**  
1/8" = 1'-0"