

**LIGHTING**

- Ab 2x4 FLUORESCENT FIXTURE ASSOCIATED CONTROL DEVICE FIXTURE TYPE (SEE LIGHT FIXTURE SCHEDULE)
- 1x4 FLUORESCENT FIXTURE
- 2x2 FLUORESCENT FIXTURE
- FIXTURE WIRED TO UNSWITCHED NORMAL CIRCUIT
- FIXTURE WIRED TO UNSWITCHED EMERGENCY CIRCUIT
- FIXTURE WIRED TO SWITCHED EMERGENCY CIRCUIT
- DOWN LIGHT
- FLUORESCENT STRIP
- WALL MOUNTED FIXTURES
- TRACK LIGHTING
- POLE MOUNTED SITE LIGHTING FIXTURE
- FIXTURE TYPE (SEE LIGHT FIXTURE SCHEDULE)
- FLOOD LIGHT
- WALL WASH LIGHT FIXTURE
- EXIT SIGN, CEILING MOUNTED
- ARROW INDICATES EGRESS DIRECTION
- SHADING INDICATES SIGN FACE
- EXIT SIGN, WALL MOUNTED
- SHADING INDICATES SIGN FACE
- DUAL HEAD EMERGENCY LIGHT BATTERY PACK TD - TIME DELAY RESET
- REMOTE EMERGENCY LIGHTING HEAD
- WALL PACK
- S<sub>3</sub> 3-WAY TOGGLE SWITCH
- S<sub>0</sub> SINGLE POLE TOGGLE SWITCH INDICATES CONTROLLED FIXTURE
- S<sub>4</sub> 4-WAY TOGGLE SWITCH
- S<sub>HL</sub> DUAL LEVEL SWITCHING
- S<sub>D</sub> DIMMER SWITCH, INCANDESCENT OR FLUORESCENT AS REQUIRED.
- S<sub>P</sub> TOGGLE SWITCH WITH PILOT LIGHT
- S<sub>T</sub> TIMER SWITCH, SPRING WOUND
- S<sub>DT</sub> SINGLE POLE DOUBLE THROW TOGGLE SWITCH, CENTER POSITION OFF
- S<sub>WP</sub> WEATHER PROOF
- S<sub>XP</sub> EXPLOSION PROOF
- S<sub>OS</sub> OCCUPANCY SENSOR SWITCH
- UNSWITCHED CONTINUATION OF BRANCH CIRCUIT
- HOME RUN
- X OCCUPANCY SENSOR
- a INDICATES CONTROLLED FIXTURE
- INDICATES AIMING DIRECTION
- OCSR OCCUPANCY SENSOR RELAY
- DS x DAYLIGHT SENSOR
- LIGHTS CONTROLLED BY SENSOR

**COMMUNICATION & DATA SYSTEMS**

- TELEPHONE SYSTEM WALL JACK
- W-INDICATES WALL MOUNTED AT 60" AFF
- P-INDICATES PAYPHONE
- (2)-INDICATES 2 OUTLETS, SINGLE BOX
- DATA SYSTEM OUTLET
- COMBINATION VOICE/DATA SYSTEM OUTLET
- UNDERFLOOR TELEPHONE SYSTEM OUTLET
- UNDERFLOOR DATA SYSTEM OUTLET
- UNDERFLOOR VOICE & DATA OUTLET
- CATV CABLE TELEVISION SYSTEM OUTLET. MOUNT 18" AFF UNLESS OTHERWISE NOTED
- CCTV CLOSED CIRCUIT TELEVISION OUTLET. MOUNT 18" AFF UNLESS OTHERWISE NOTED
- PA PAGING SYSTEM CONTROL PANEL AND PAGING AMPLIFIER
- PAGING SYSTEM SPEAKER, CEILING MOUNTED
- PAGING SYSTEM SPEAKER, WALL MOUNT AT 7'-6" AFF
- 1. FLUSH, 2. SURFACE, 3. HORN, 4. DUAL HORN
- VC VOLUME CONTROL
- HC INTERCOM SYSTEM HAND KEY
- CS CLOCK SPEAKER
- HS INTERCOM SYSTEM HAND SET
- CH WALL MOUNTED CLOCK
- CEILING MOUNTED TELEPHONE SYSTEM OUTLET
- CEILING MOUNTED DATA SYSTEM OUTLET
- CEILING MOUNTED VOICE & DATA OUTLET

**POWER**

- (4) NON-FUSED SAFETY SWITCH
- AMPERE RATING
- NEMA ENCLOSURE RATING
- FUSED SAFETY SWITCH. TOP NUMBER INDICATES SWITCH AMPERE RATING. LOWER NUMBER INDICATES FUSE RATING
- NEMA ENCLOSURE
- MAGNETIC MOTOR STARTER. FVNR UNLESS INDICATED OTHERWISE
- NEMA ENCLOSURE RATING
- NEMA SIZE (TYPICAL)
- COMBINATION CIRCUIT BREAKER/MAGNETIC MOTOR STARTER
- FIRST NUMBER INDICATES CIRCUIT BREAKER AMPERE RATING
- SECOND NUMBER INDICATES NEMA STARTER SIZE
- COMBINATION FUSED DISCONNECT/MAGNETIC MOTOR STARTER
- NUMBERS INDICATE DISCONNECT AMPERE RATING/FUSE RATING/NEMA STARTER SIZE
- NON-FUSED DISCONNECT/MAGNETIC MOTOR STARTER
- FIRST NUMBER INDICATES CIRCUIT BREAKER AMPERE RATING
- SECOND NUMBER INDICATES NEMA STARTER SIZE
- MANUAL MOTOR STARTER. TOGGLE OPERATED, 1, 2 OR 3 POLE AS REQUIRED. OVERLOAD PROTECTION
- MANUAL MOTOR SWITCH, TOGGLE OPERATED, SINGLE PHASE. 1 OR 2 POLE AS REQUIRED (NO OVERLOAD PROTECTION)
- ENCLOSED CIRCUIT BREAKER
- AMPERE RATING
- ELECTRIC MOTOR, NUMBER INDICATES HORSEPOWER RATING
- EXPLOSION PROOF MOTOR
- VARIABLE AIR VOLUME CONTROL ACTUATORS
- LOCAL SELECTOR SWITCH
- H/O/A - HAND/OFF/AUTO
- EMO EMERGENCY OFF BREAK GLASS STATION

- JUNCTION BOX
- TRANSFORMER
- POWER POLE
- CONDUIT TURNING UP
- CONDUIT TURNING DOWN
- EY CONDUIT SEAL
- DUPLEX RECEPTACLE, NEMA 5-20R.
- INSTALLED ON EMERGENCY CIRCUIT (TYPICAL)
- GFI DUPLEX RECEPTACLE, NEMA 5-20R
- HOSPITAL GRADE DUPLEX RECEPTACLE, NEMA 5-20R
- HOSPITAL GRADE GFCI DUPLEX RECEPTACLE, NEMA 5-20R
- HOSPITAL GRADE ISOLATED GROUND DUPLEX RECEPTACLE, NEMA 5-20R
- SINGLE RECEPTACLE, NEMA 5-20R
- SINGLE CEILING RECEPTACLE, NEMA 5-20R UNO
- DOUBLE DUPLEX (QUADRUPLEX) RECEPTACLE, NEMA 5-20R
- HOSPITAL GRADE DOUBLE DUPLEX RECEPTACLE NEMA 5-20R
- SWITCHED RECEPTACLE
- FLOOR OUTLET, DUPLEX RECEPTACLE, NEMA 5-20R
- POWER RECEPTACLE, 480 VOLT NEMA CONFIGURATION AS NOTED.
- POWER RECEPTACLE, 240 VOLT NEMA CONFIGURATION AS NOTED.
- PANELBOARD, NORMAL POWER
- PANELBOARD, EMERGENCY POWER
- MULTI OUTLET ASSEMBLY
- CONTROL PANEL

**GROUNDING**

- GROUND ROD
- EXOTHERMIC WELD CONNECTION
- BOLTED CONNECTION
- BARE COPPER CONDUCTOR
- RUN EXPOSED
- BARE COPPER CONDUCTOR
- EMBEDDED IN CONCRETE OR BURIED

**LINE TYPES**

- EXISTING
- NEW
- DEMOLITION

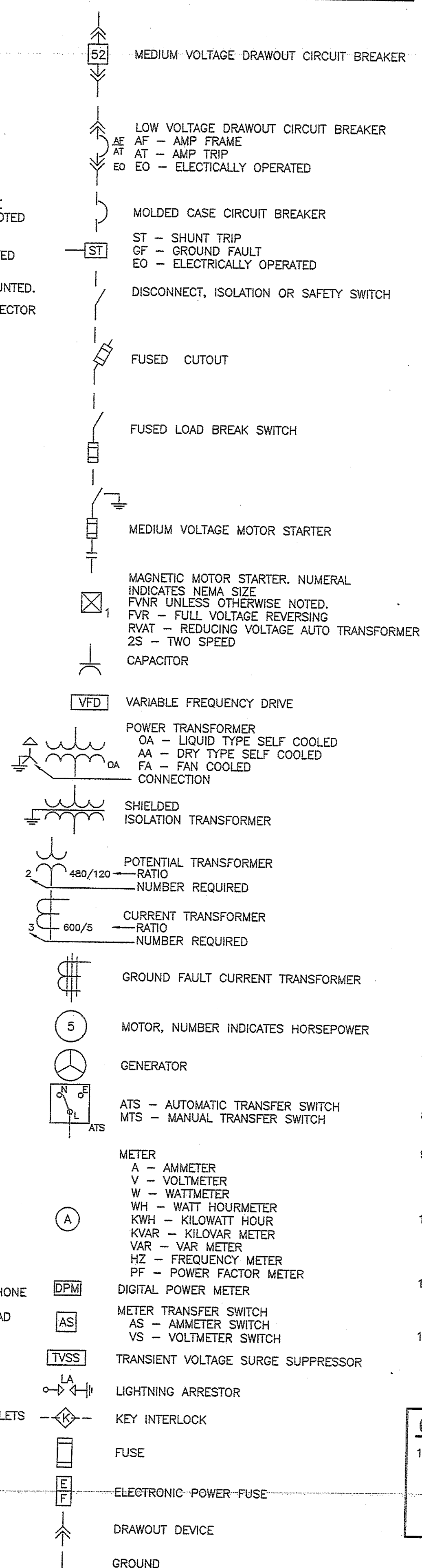
**FIRE ALARM**

- FACP FIRE ALARM CONTROL PANEL
- FAA FIRE ALARM ANNUCIATOR
- FMA FIRE ALARM MASTER BOX
- FMP FIRE ALARM MANUAL PULL STATION
- FMS FIRE ALARM SPEAKER/STROBE UNIT
- FVA FIRE ALARM AUDIBLE/VISIBLE NOTIFICATION APPLIANCE (GENERAL EVACUATION)
- FVLA FIRE ALARM AUDIBLE/VISIBLE NOTIFICATION APPLIANCE CLEAN ROOM NOTIFICATION (LOCAL)
- FVLAO FIRE ALARM AUDIBLE/VISIBLE NOTIFICATION APPLIANCE CLEAN ROOM NOTIFICATION (LOCAL) CEILING MOUNTED
- FVLAO (110) FIRE ALARM VISIBLE ONLY NOTIFICATION APPLIANCE CANDELA INTENSITY-15/75 UNLESS OTHERWISE NOTED CEILING MOUNTED
- PHOTOELECTRIC SMOKE DETECTOR. CEILING MOUNTED INDICATES AUXILIARY CONTACT.
- FIXED TEMPERATURE HEAT DETECTOR. CEILING MOUNTED.
- INDICATES EQUIPMENT INTERLOCKED WITH THE DETECTOR
- CLEAN ROOM SMOKE DETECTOR
- INDICATES EQUIPMENT INTERLOCKED WITH THE SMOKE DETECTOR
- COMBINATION RATE-OF-RISE/FIXED TEMPERATURE HEAT DETECTOR. CEILING MOUNTED
- ELECTRIC BELL
- DUCT SMOKE DETECTOR, PHOTOELECTRIC WITH AUXILIARY CONTACT.
- SPRINKLER SYSTEM FLOW SWITCH
- SPRINKLER SYSTEM TAMPER SWITCH
- FIRE ALARM SYSTEM MAGNETIC DOOR HOLDER
- INTERLOCK RELAY
- SMOKE DAMPER
- REMOTE ALARM INDICATOR
- REMOTE TESTING STATION
- KNOX BOX

**SECURITY SYSTEMS**

- 2-WAY CEILING MOUNTED INTERCOM SPEAKER
- CEILING MOUNTED PAGING SPEAKER
- WALL MOUNTED PAGING HORN
- CEILING OR WALL MOUNTED FIXED CAMERA
- CEILING OR WALL MOUNTED PTZ CAMERA
- PAGING CONTROL EQUIPMENT
- INTERCOM MASTER STATION
- DOOR CONTROL EQUIPMENT
- MONITORED DOOR POSITION SWITCH AND CONTROLLED DOOR HARDWARE
- MONITORED DOOR POSITION SWITCH
- STANDARD INTERCOM STATION
- VISITATION TELEPHONE
- WALL MOUNTED DURESS BUTTON
- GRAPHIC CONTROL PANEL
- TOUCH SCREEN WORKSTATION
- CCTV CONTROL OR DISPLAY EQUIPMENT
- PERIMETER CONTROL EQUIPMENT
- DURESS CONTROL EQUIPMENT
- DURESS ALARM RECEIVER
- OFFICER CONTROLLED COLLECT-ONLY PUBLIC TELEPHONE
- OFFICER CONTROLLED FIRE SPRINKLER (DELUGE) HEAD
- DUAL TECHNOLOGY VOLUMETRIC SENSOR
- LOCAL DOOR RELEASE BUTTON
- OFFICER CONTROLLED SHOWER WATER SUPPLY
- OFFICER CONTROLLED LIGHTING AND ELECTRICAL OUTLETS
- DOOR CONTACT
- CARD READER
- KEY PAD
- CLOSED CIRCUIT TELEVISION CAMERA
- ELECTRIC STRIKE
- MAG LOCK

**ONE LINE DIAGRAM**



**ABBREVIATIONS**

AAMP	AMPERE	LA	LIGHTNING ARRESTER
AFF	ABOVE FINISHED FLOOR	LTG	LIGHTING
AFG	ABOVE FINISHED GRADE	MC	METAL CLAD
AHJ	AUTHORITY HAVING JURISDICTION	MCB	MAIN CIRCUIT BREAKER
AIC	AMPERE INTERRUPTING CAPACITY	MFR	MANUFACTURER
AWG	AMERICAN WIRE GAUGE	MI	MINERAL INSULATED
BFG	BELOW FINISHED GRADE	MLO	MAIN LUG ONLY
BOS	BOTTOM OF STEEL	MTD	MOUNTED
C	CONDUIT, CONDUCTOR	MV	MEDIUM VOLTAGE
CATV	CABLE TELEVISION	NC	NORMALLY CLOSED
CB	CIRCUIT BREAKER	NEC	NATIONAL ELECTRICAL CODE
CCTV	CLOSED CIRCUIT TELEVISION	NEG	NEGATIVE
COMP	COMPARTMENT	NEUT	NEUTRAL
CPT	CONTROL POWER TRANSFORMER	NIC	NOT IN CONTRACT
CT	CURRENT TRANSFORMER	NO	NORMALLY OPEN
CU	COPPER	NTS	NOT TO SCALE
DACT	DIGITAL ALARM COMMUNICATOR TRANSMITTER	PF	POWER FACTOR
DB	DIRECT BURIED	PH	PHASE
DISC	DISCONNECT	PVC	POLYVINYL CHLORIDE
DN	DOWN	RGS	RIGID STEEL CONDUIT
EMT	ELECTRICAL METALLIC TUBING	RSC	RIGID STEEL CONDUIT
EWC	ELECTRIC WATER COOLER	RTD	RESISTANCE TEMPERATURE DETECTOR
FAA	FIRE ALARM ANNUCIATOR	SN	SOLID NEUTRAL
FACP	FIRE ALARM CONTROL PANEL	STP	SHIELDED TWISTED PAIR
FBO	FURNISHED BY OTHERS	STT	SHIELDED TWISTED TRIPLET
FU	FUSE	SWBD	SWITCHBOARD
FWE	FURNISHED WITH EQUIPMENT	SWGR	SWITCHGEAR
GEN	GENERATOR	TOS	TOP OF STEEL
GFCI	GROUND FAULT CIRCUIT BREAKER	TP	TAMPER PROOF
GND	GROUND	TRANSF	TRANSFORMER
HTR	HORSEPOWER	TVSS	TRANSIENT VOLTAGE SURGE SUPPRESSOR
IG	ISOLATED GROUND	UNO	UNLESS NOTED OTHERWISE
IMC	INTERMEDIATE METAL CONDUIT	V	VOLT
K	KILO	VA	VOLT-AMPERE
KCMIL	THOUSAND CIRCULAR MILS	VAR	VOLT-AMPERE REACTIVE
KV	KILOVOLT	WM	WATT METER
KVA	KILOVOLT-AMPERE	WP	WEATHER PROOF
KVAR	KILOVOLT-AMPERE REACTIVE	XFMR	TRANSFORMER
KW	KILOWATT	XP	EXPLOSION PROOF
KWH	KILOWATT-HOUR		

**GENERAL NOTES:**

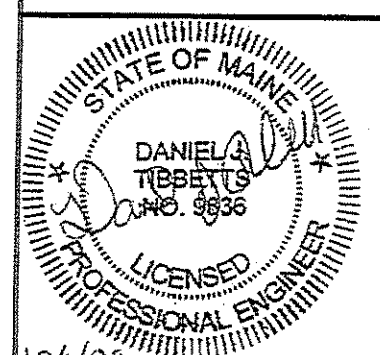
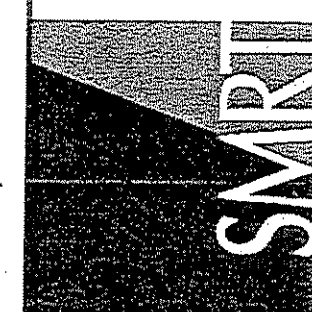
- ALL WORK SHALL BE PERFORMED IN ACCORDANCE WITH NFPA-70, NATIONAL ELECTRICAL CODE (NEC).
- ALL MOTOR SAFETY SWITCHES, DISCONNECTS AND MOTOR STARTERS ARE PROVIDED BY DIVISION 16000 UNLESS NOTED AS FURNISHED WITH EQUIPMENT (FWE).
- UNLESS OTHERWISE NOTED CONVENIENCE RECEPTACLES SHALL BE MOUNTED 18-INCHES AFF, LIGHTING TOGGLE SWITCHES 48-INCHES AFF, DATA SYSTEM OUTLETS 18-INCHES AFF, FIRE ALARM NOTIFICATION DEVICES 80-INCHES AFF OR 6-INCHES BELOW CEILING, WHICHEVER IS LOWER, AND FIRE ALARM MANUAL PULL STATIONS 48-INCHES TO TOP OF DEVICE.
- ALL PENETRATIONS THROUGH FLOORS, RATED WALLS AND PARTITIONS SHALL BE SEALED WITH UL APPROVED FIRE SEALANT MATERIAL TO MAINTAIN THE RATING OF SEPARATION.
- ALL ENCLOSURES, CONDUIT BODIES AND THEIR COVERS CONTAINING FIRE ALARM SYSTEM CONDUCTORS SHALL BE PAINTED RED.
- AN EQUIPMENT GROUNDING CONDUCTOR SHALL BE INSTALLED WITH EVERY FEEDER AND BRANCH CIRCUIT.
- UNLESS OTHERWISE NOTED WIRING SHALL BE 2#12 AWG CONDUCTORS AND #12 GND. HOME RUNS FED FROM 20A-1P CIRCUITS IN EXCESS OF 100 FEET SHALL BE #10 AWG.
- FLEXIBLE CONNECTIONS TO MOTORS SHALL BE LIQUID TIGHT FLEXIBLE METAL CONDUIT, UNLESS OTHERWISE NOTED.
- LIGHTING TOGGLE SWITCHES SHALL BE COMMERCIAL SPECIFICATION GRADE 120 VOLT, SIDE WIRED AND PROVIDED WITH GROUNDING SCREW. LEVITON, PASS AND SEYMOUR OR APPROVED EQUAL COORDINATE COLOR WITH ARCHITECT.
- CONVENIENCE RECEPTACLES SHALL BE COMMERCIAL SPECIFICATION GRADE GROUNDING TYPE NEMA 5-20R, SIDE WIRED. LEVITON, PASS AND SEYMOUR OR APPROVED EQUAL COORDINATE COLOR WITH ARCHITECT.
- PROVIDE WALL PLATES FOR ALL WIRING DEVICES, COLORED SMOOTH TYPE THERMOPLASTIC IN FINISHED AREAS AND GALVANIZED IN UNFINISHED AREAS.
- ALL WIRING SHALL BE 600V, COPPER WITH THHN/THWN INSULATION.

**GENERAL NOTE**

1. ALL GENERAL NOTES, SYMBOL LISTS, AND DETAILS ARE TO BE CONSIDERED AS APPLICABLE TO ALL ELECTRICAL DRAWINGS FOR THIS PROJECT. SYMBOLS AND ABBREVIATIONS SHOWN ON THIS SHEET ARE FOR REFERENCE ONLY AND DO NOT INDICATE THEIR INCORPORATION IN THE DESIGN.

144 Fox Street, P.O. Box 618  
Portland, Maine 04104  
Tel: (207) 772-3936  
Fax: (207) 772-1070  
www.smrtinc.com

ARCHITECTURE  
ENGINEERING  
PLANNING  
INTERIOR DESIGN  
COMMISSIONING



FINARD PROPERTIES INC. - 1 MONUMENT SQUARE  
KEY BANK AND LOBBY RENOVATION  
ISSUED FOR CONSTRUCTION  
10-1-09

REV	DESCRIPTION	DATE
0	ISSUED FOR CONSTRUCTION	10-1-09

GRAPHIC SCALE:  
0" 1"

SCALE: NONE  
PROJECT MANAGER: JLH  
JC/DRAWN BY: BAL/CDS  
DATE OF RECORD: DIT  
CAD FILE: 08052-E-001  
PROJECT NO: 08052-06  
DATE: 10-1-09  
SHEET TITLE: LEGEND AND GENERAL NOTES