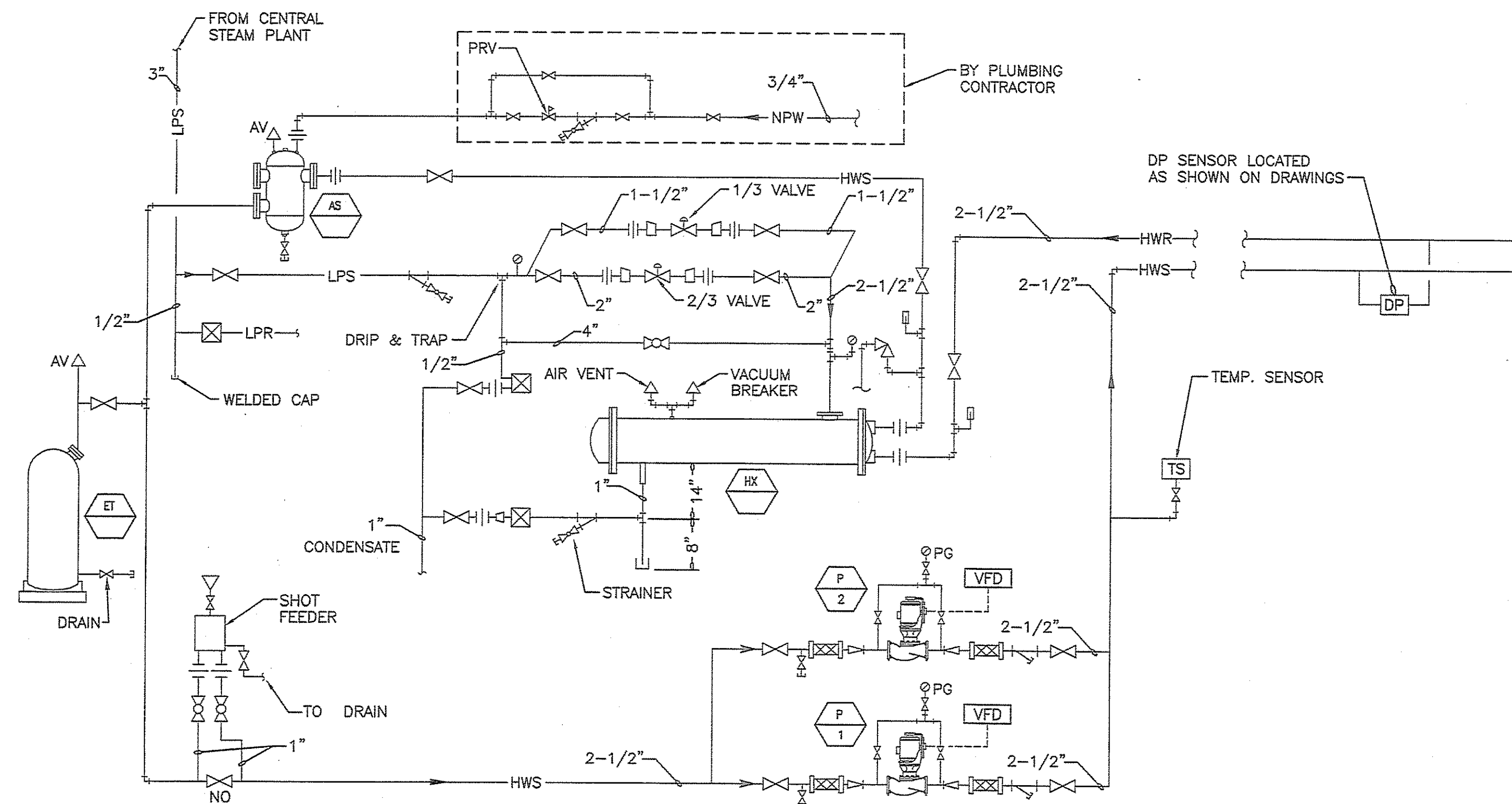


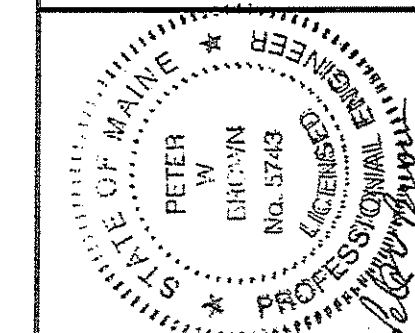
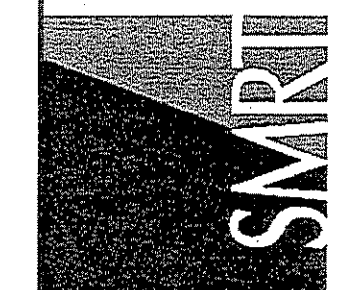
STEAM CONVERTER SYSTEM SEQUENCE OF OPERATION

- A. THE HW SYSTEM SHALL BE ENABLED AT ALL TIMES TO PROVIDE REHEAT.
- B. THE LEAD HW PUMP SHALL BE ENERGIZED WHEN THE HW SYSTEM IS ENABLED. A VFD SHALL MODULATE THE LEAD PUMP SPEED TO MAINTAIN DIFFERENTIAL PRESSURE IN THE SYSTEM.
- C. IF THE LEAD PUMP IS ENABLED, AND OPERATION IS NOT PROVEN, AN ALARM SHALL BE LOGGED AT THE USER WORKSTATION AND THE LAG PUMP SHALL BE ENABLED. IF THE LAG PUMP IS ENABLED AND OPERATION IS NOT PROVEN, A LAG PUMP ALARM SHALL BE LOGGED AT THE USER WORKSTATION. THE LEAD AND LAG PUMPS SHALL BE ALTERNATED EVERY 7 DAYS.
- D. THE HW SUPPLY TEMPERATURE SENSOR SHALL MODULATE STEAM CONTROL VALVES TO MAINTAIN TEMPERATURE AT SETPOINT (140F ADJ.). 1/3 VALVE SHALL MODULATE OPEN FIRST. ONCE THE 1/3 VALVE IS FULLY OPEN AND HW TEMPERATURE STARTS TO DROP, THE 2/3 CAPACITY VALVE SHALL MODULATE OPEN. IF LOAD STARTS TO DROP AND BOTH VALVES ARE OPEN, THE 2/3 VALVE SHALL MODULATE CLOSED. ONCE THE 2/3 VALVE IS FULLY CLOSED, THE 1/3 VALVE SHALL MODULATE CLOSED TO MAINTAIN TEMPERATURE.



144 Fore Street P.O. Box 618
Portland, Maine 04109
tel. (207) 772-3846
fax. (207) 772-1070
www.smartinc.com

ARCHITECTURE
ENGINEERING
PLANNING
INTERIOR DESIGN
COMMISSIONING



FINARD PROPERTIES INC. - 1 MONUMENT SQUARE
KEY BANK AND LOBBY RENOVATION
PORTLAND, MAINE

RE-ISSUED FOR CONSTRUCTION
10-1-09

CURRENT ISSUE STATUS:

| REV | DESCRIPTION | DATE |
|-----|----------------------------|----------|
| 2 | RE-ISSUED FOR CONSTRUCTION | 10-1-09 |
| 1 | RE-ISSUED FOR CONSTRUCTION | 3-18-09 |
| 0 | ISSUED FOR CONSTRUCTION | 11-25-08 |

GRAPHIC SCALE:
0" 1"

SCALE: NTS

PROJECT MANAGER: JLH
J/C/DRAWN BY: BAL
A/E OF RECORD: PWB
CAD FILE: 08052-M-652
PROJECT NO: 08052-06
DATE: 10-01-09

A1 STEAM CONVERTER SCHEMATIC AND SEQUENCE OF OPERATION

NOT TO SCALE

SEQUENCE OF OPERATIONS

SHEET No. M-652
© COPYRIGHT 2008 SMART INC.