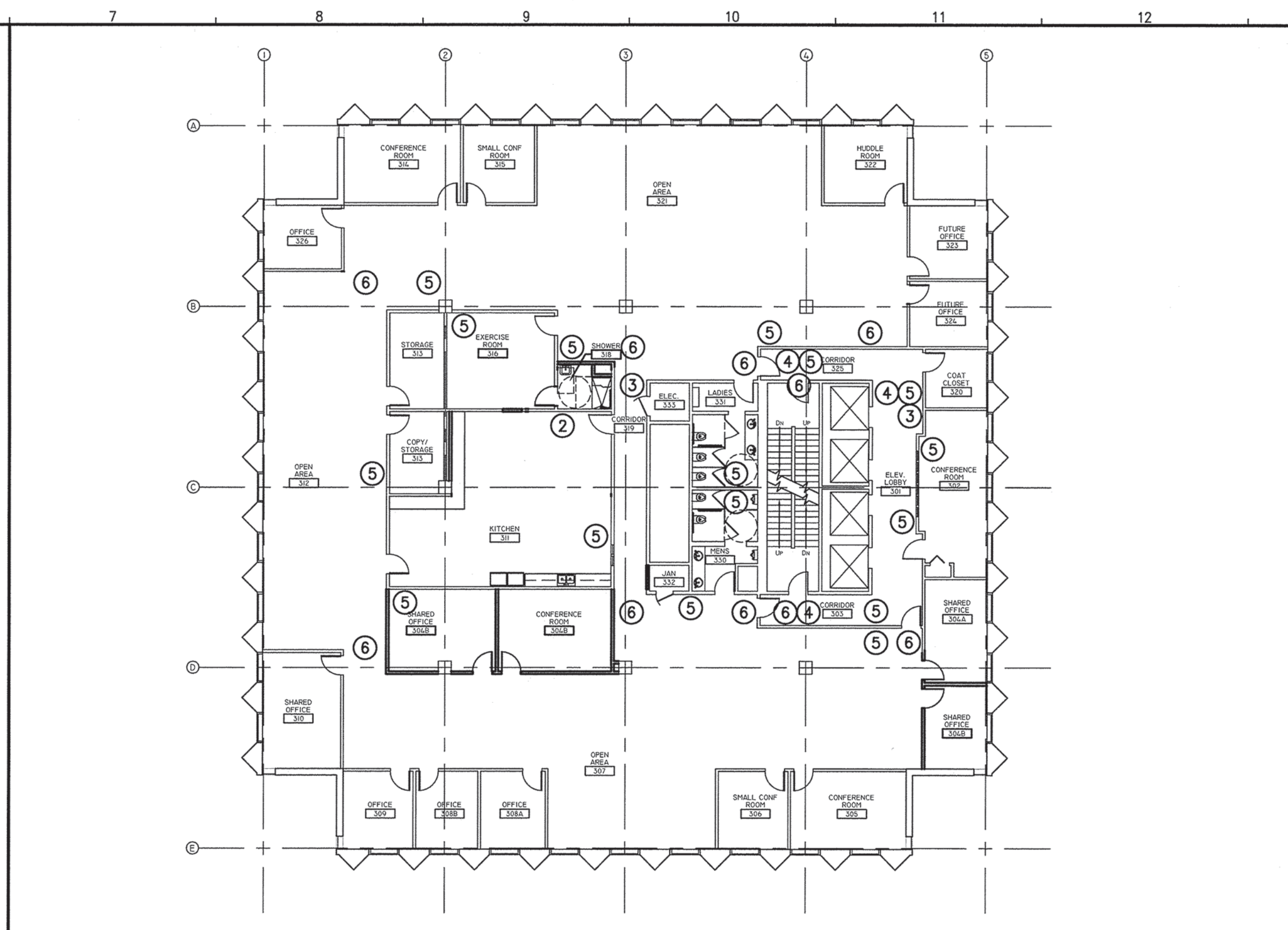


G1 THIRD FLOOR CODE COMPLIANCE PLAN

1/8"=1'-0"

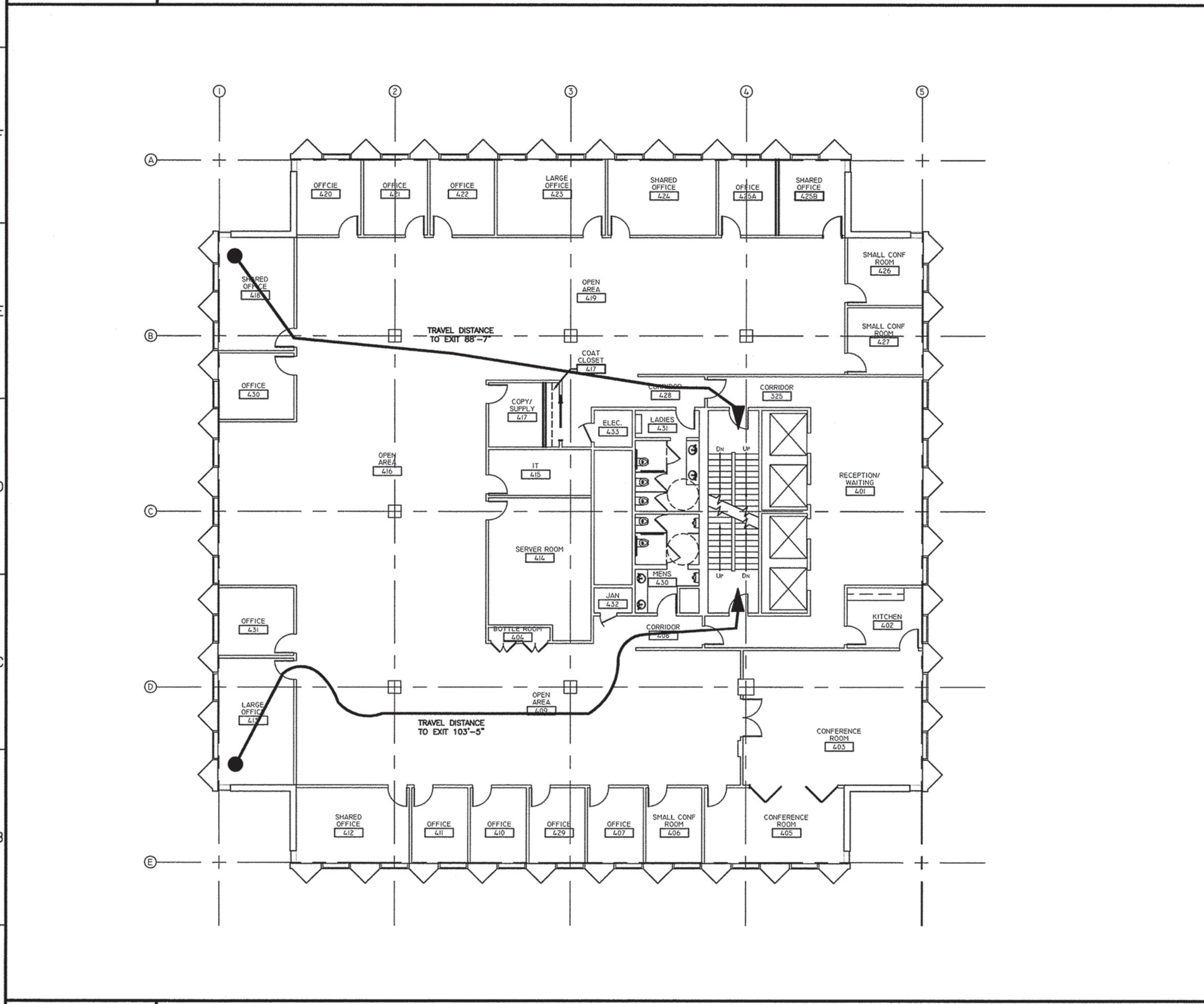
*



G6 THIRD FLOOR LIFE SAFETY PLAN

1/8"=1'-0"

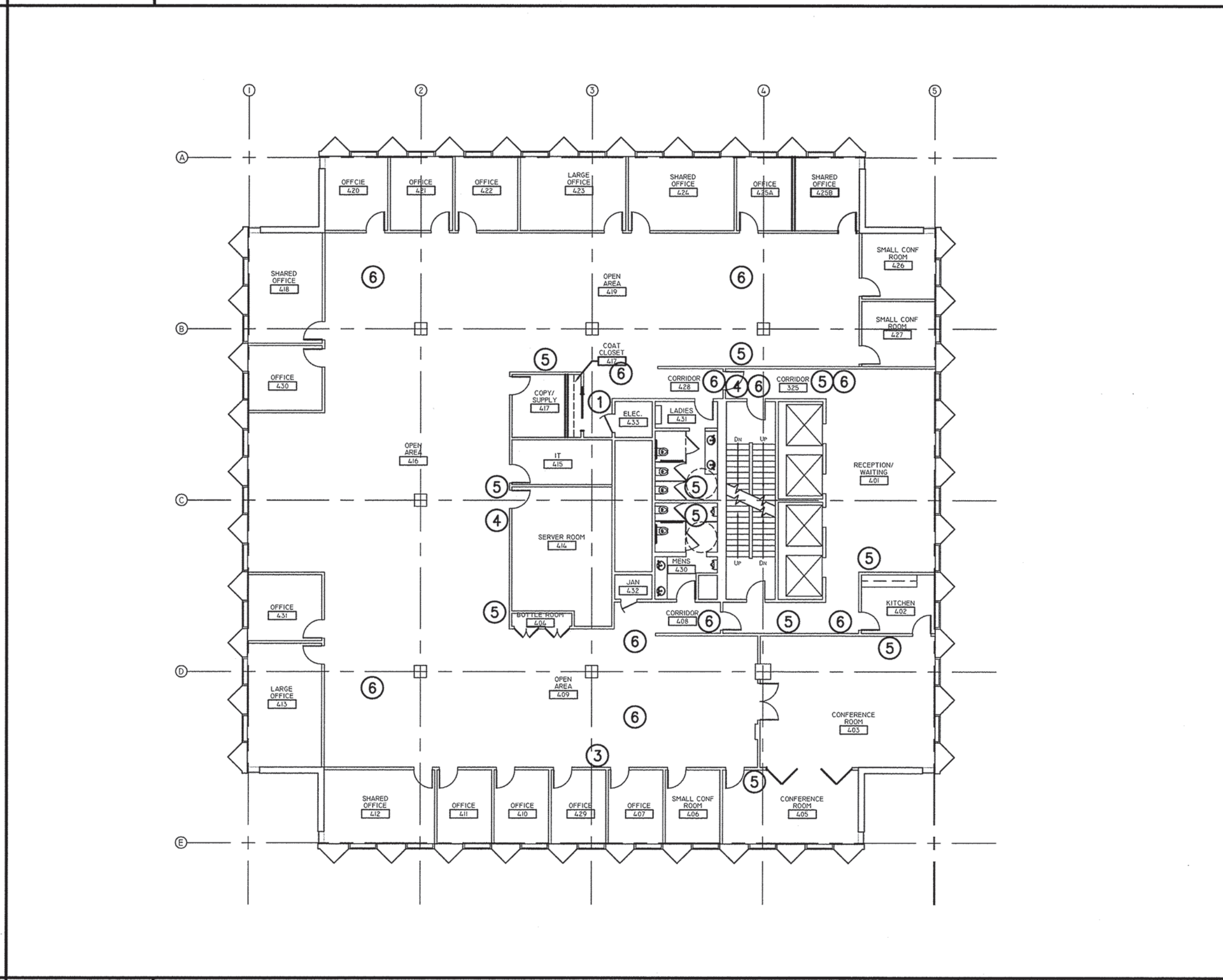
*



A1 FOURTH FLOOR CODE COMPLIANCE PLAN

1/8"=1'-0"

*



A6 FOURTH FLOOR LIFE SAFETY PLAN

1/8"=1'-0"

*

GENERAL NOTES:

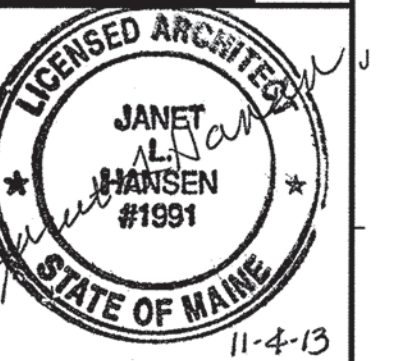
1. REFER TO G1001 FOR PARTITION LEGEND AND GENERAL NOTES.

LIFE SAFETY LEGEND

- ① FIRE EXTINGUISHER, SEMI-RECESSED (FE-1)
- ② FIRE EXTINGUISHER, SURFACE MOUNTED (FE-2)
- ③ FIRE EXTINGUISHER, RECESSED (FE-3)
- ④ FIRE ALARM PULL STATION
- ⑤ STROBE UNIT
- ⑥ EXIT SIGNAGE

144 Fore Street/P.O. Box 618
Portland, Maine 04104
tel. (207) 772-3846
fax. (207) 772-1070
www.smrtdinc.com

ARCHITECTURE
ENGINEERING
PLANNING
INTERIOR DESIGN
COMMISSIONING



PUTNEY OFFICE FIT UP
1 MONUMENT SQUARE
PORTLAND, MAINE
CURRENT ISSUE STATUS:
ISSUED FOR PERMIT
11-04-13
CURRENT ISSUE STATUS:

REV	DESCRIPTION	DATE

GRAPHIC SCALE:
0" 1"
SCALE: 1/8"=1'-0"
PROJECT MANAGER: ERA
JC/DRAWN BY: ECC
A/E OF RECORD: JLH
CAD FILE: A-102-13147
PROJECT NO: 13147
DATE: 11-04-13

SHEET TITLE:
CODE COMPLIANCE
LIFE SAFETY PLAN
SHEET No. **A-001**
© COPYRIGHT 2013 SMRT INC.

PROGRESS