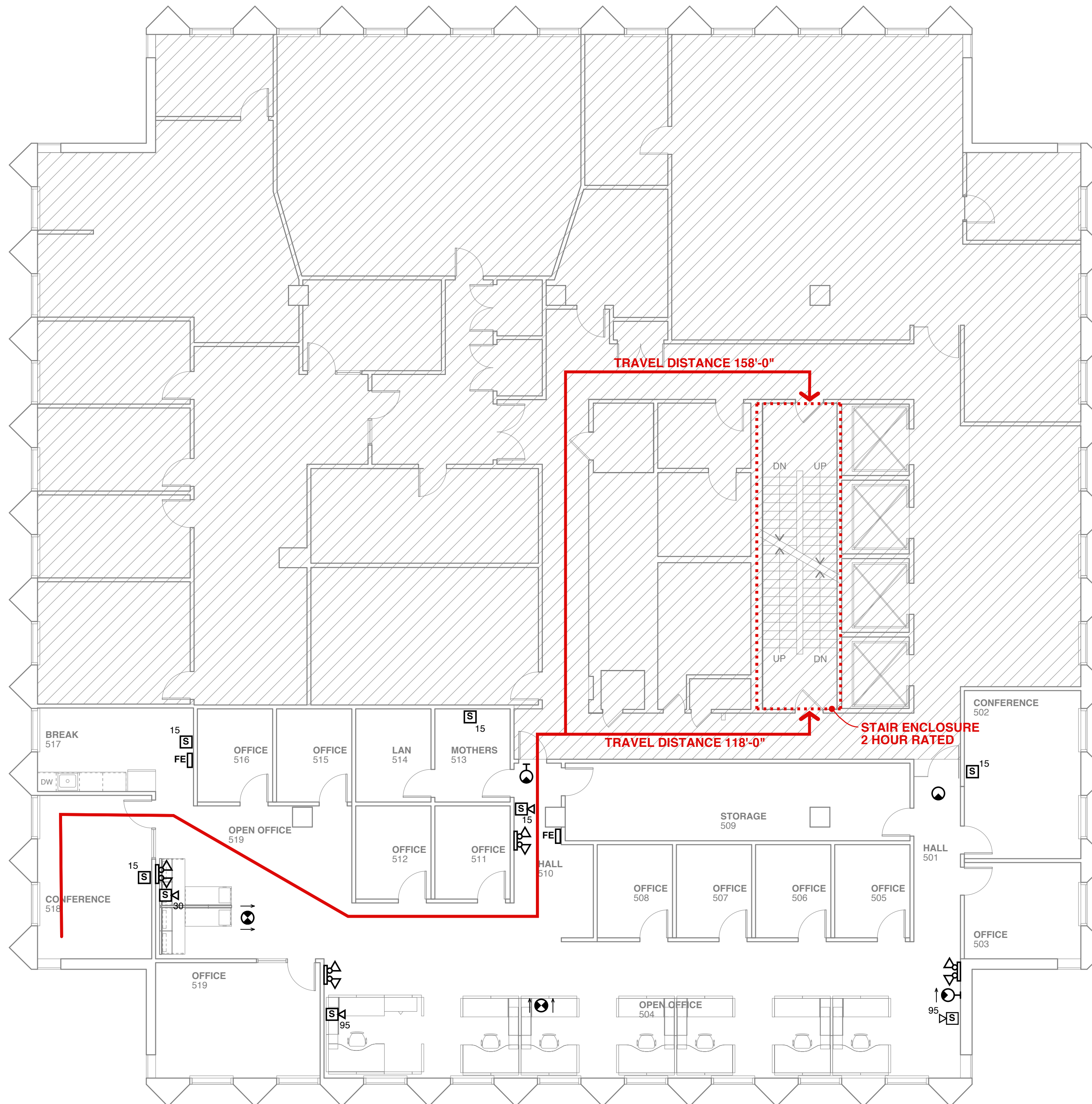


IBC 2009 CODE DATA	
FLOOR AREA 5TH FLOOR	12,000 SF
AREA BEING RENOVATED	3,620 SF
NUMBER OF STORIES	10 STORIES
TYPE OF CONSTRUCTION - TABLE 601	1 A
USE AND OCCUPANCY CLASSIFICATION - SECTION 304.1	BUSINESS B
BUILDING HEIGHT LIMITATION - TABLE 503	UNLIMITED
BUILDING HEIGHT LIMITATION - WITH ALLOWABLE INCREASES	UNLIMITED
BUILDING AREA LIMITATION PER FLOOR - TABLE 503	UNLIMITED
BUILDING AREA LIMITATION PER FLOOR - WITH ALLOWABLE INCREASES	UNLIMITED
OCCUPANT LOAD OF SUITE - TABLE 1004.1.1	3,620 / 100 SF PER OCCUPANT = 37
MAX. EXIT TRAVEL DISTANCE - TABLE 1016.1	300 FEET
MAX. COMMON PATH OF TRAVEL DISTANCE - SECTION 1014.3	100 FEET
MINIMUM NUMBER OF EXITS - TABLE 1021.1	2
FIRE RESISTANT CONSTRUCTION:	
STRUCTURAL FRAME	3 HR
EXTERIOR BEARING WALLS	3 HR
INTERIOR BEARING WALLS	3 HR
EXTERIOR NONBEARING WALLS	0 HR
INTERIOR NONBEARING WALLS	0 HR
FLOOR CONSTRUCTION	2 HR
ROOF CONSTRUCTION	1 1/2 HR
STAIR ENCLOSURES AND ELEVATOR SHAFTS	2 HR
FIRE EXTINGUISHERS	1 AT EACH EXIT: 3-A, 10-B/C
NOTES	

NFPA 101 2009 CODE DATA	
FLOOR AREA 4TH FLOOR	12,000 SF
AREA BEING RENOVATED	3,620 SF
NUMBER OF STORIES	10 STORIES
TYPE OF CONSTRUCTION - NFPA 220	1-332
USE GROUP CLASSIFICATION - SECTION 3.3.178.3	BUSINESS
OCCUPANT LOAD OF SUITE - TABLE 7.3.1.2	3,620 / 100 SF PER OCCUPANT = 37
MAX. EXIT TRAVEL DISTANCE - SECTION 38.2.6.3	300 FEET
MAX. COMMON PATH OF TRAVEL DISTANCE - SECTION 38.2.5.3.1	100 FEET
MINIMUM NUMBER OF EXITS - SECTION 38.2.4.1	2
FIRE RESISTANT CONSTRUCTION:	
EXTERIOR BEARING WALLS	3 HR
INTERIOR BEARING WALLS	3 HR
COLUMNS	3 HR
BEAMS, GIRDERS, TRUSSES, AND ARCHES	3 HR
FLOOR CONSTRUCTION	2 HR
ROOF CONSTRUCTION	1 1/2 HR
EXTERIOR NONBEARING WALLS	0 HR
STAIR ENCLOSURES AND ELEVATOR SHAFTS	2 HR
FIRE EXTINGUISHERS	1 AT EACH EXIT: 3-A, 10-B/C
NOTES	

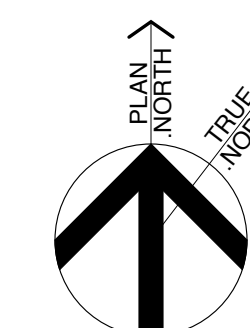
- LIFE SAFETY PLAN LEGEND**
- EMERGENCY LIGHT DOUBLE HEAD
  - EXIT SIGN WALL MOUNT - ARROWS INDICATE DIRECTION
  - EXIT SIGN CEILING MOUNT - ARROWS INDICATE DIRECTION
  - HORN STROBE - NUMBER INDICATES CANDELA RATING
  - STROBE - NUMBER INDICATES CANDELA RATING
  - FIRE EXTINGUISHER

- REFLECTED CEILING PLAN GENERAL NOTES**
- A. PROVIDE NEW DEVICES ACCORDING TO LAYOUT SHOWN.
  - B. PLAN SHOWS LOCATIONS OF LIFE SAFETY DEVICES. EXISTING WIRING MAY BE USED IF EXISTING DEVICES ARE CLOSE TO THOSE SHOWN.
  - C. COORDINATE WITH BUILDING FIRE ALARM VENDOR TO ENSURE COMPATIBILITY OF NEW DEVICES WITH EXISTING SYSTEM.
  - D. FURNITURE BY TENANT. SHOWN FOR ILLUSTRATION PURPOSES.

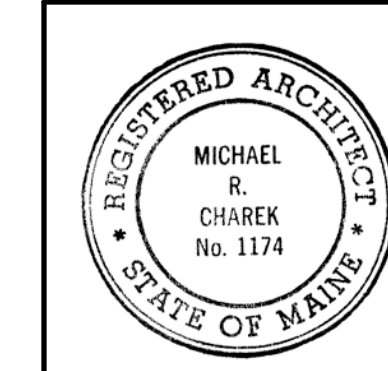


**1 LIFE SAFETY PLAN**  
 SCALE: 1/8" = 1'-0"  
 2' 4' 8' 16'

AREA N.I.C.



**Michael Charek Architects**  
 25 Hartley Street  
 Portland, Maine 04103  
 (207) 761-0556



**Offices for UNUM**  
 Fifth Floor Square  
 One Monument Square  
 Portland, Maine

**Title**  
 LIFE SAFETY PLAN

**Scale:** 1/8" = 1'-0"

**Date:** 8/30/13

**Revisions**

**Sheet**  
**A3**