

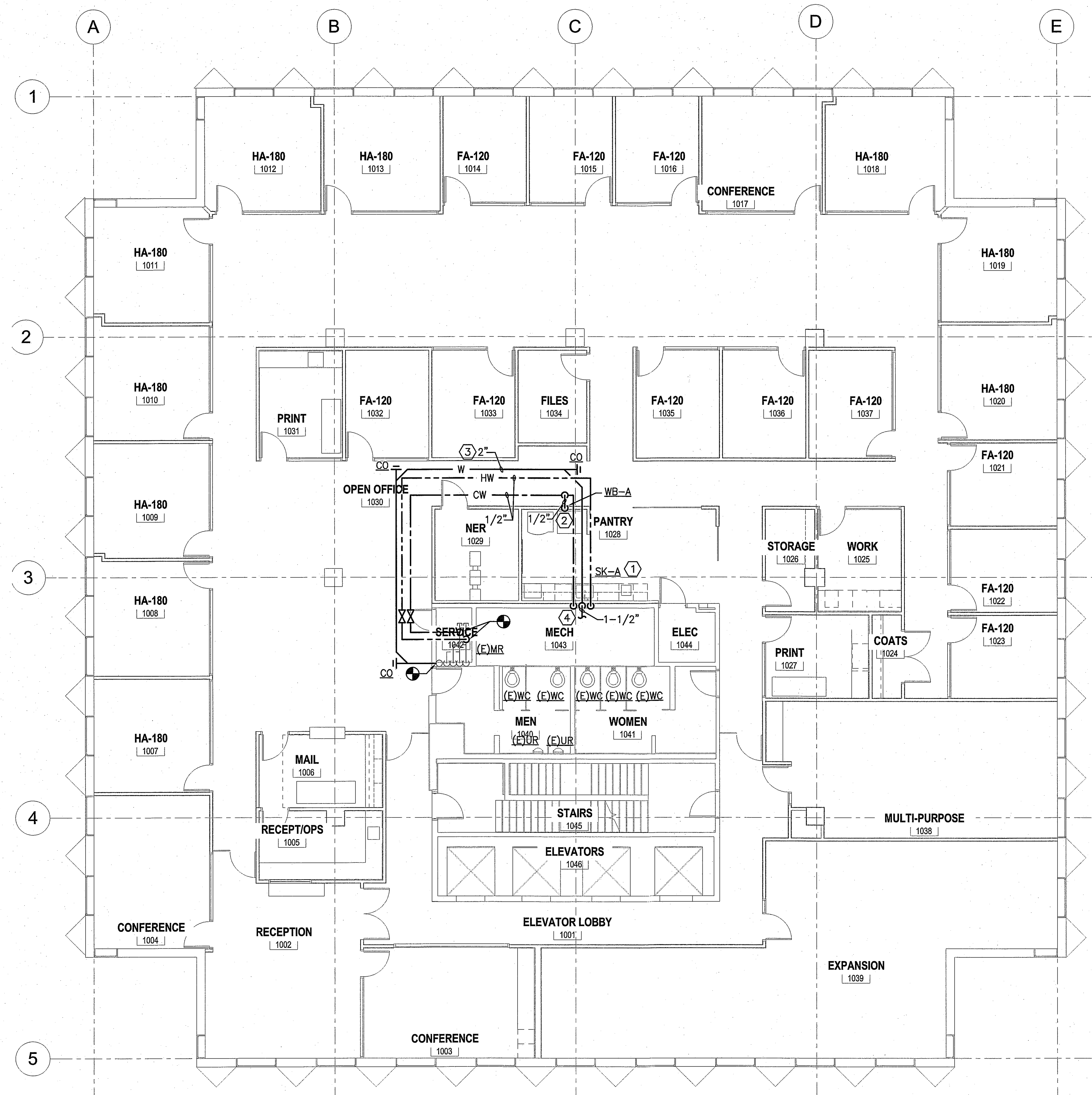
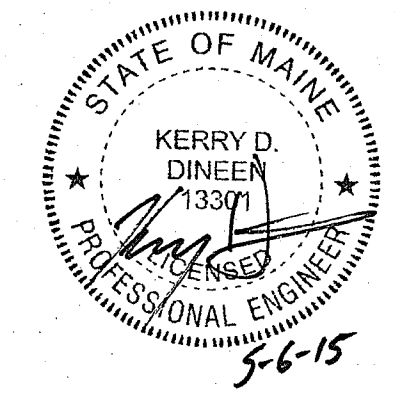
NOTES:

1. SEE SHEET PL001 FOR LEGEND AND ABBREVIATIONS.

KEYED NOTES:

- ① 1/2" CW AND 1/2" HW DROP.
 1-1/2" V-RISE AND 2" W-DN.
 ROUTE 1/2" CW AND 1/2" HW-EACH TO SK-A. ROUTE 1/2"
 HW TO DISHWASHER, SEE DETAIL 1/PL501. ROUTE 1/2" CW
 TO ICEMAKER, SEE DETAILS 2/PL501 AND 3/PL501.
- ② 1/2" CW-DROP TO WB-A.
- ③ WASTE PIPING IN CEILING OF FLOOR BELOW.
- ④ ROUTE NEW 1-1/2" VENT PIPING TO NEAREST 2" VENT MAIN
 OR LARGER AND CONNECT.

ARCHITECTURE 144 Fore Street/P.O. Box 618
 ENGINEERING Portland, Maine 04104
 PLANNING tel. (207) 772-3846
 INTERIOR DESIGN fax. (207) 772-1070
 COMMISSIONING www.smrinc.com
 SMRT PROJECT #15035



① TENTH FLOOR PLAN
 1/8" = 1'-0"

REVISIONS

BANK OF AMERICA - 9TH & 10TH FLOORS

BANK OF AMERICA
 1 MONUMENT SQUARE
 Portland, ME

TITLE
 TENTH FLOOR PLUMBING PLAN

DATE **JOB NO.**
 May 11, 2015 I5051.00

DRAWING NO. **PL102**

ISSUED FOR CONSTRUCTION

