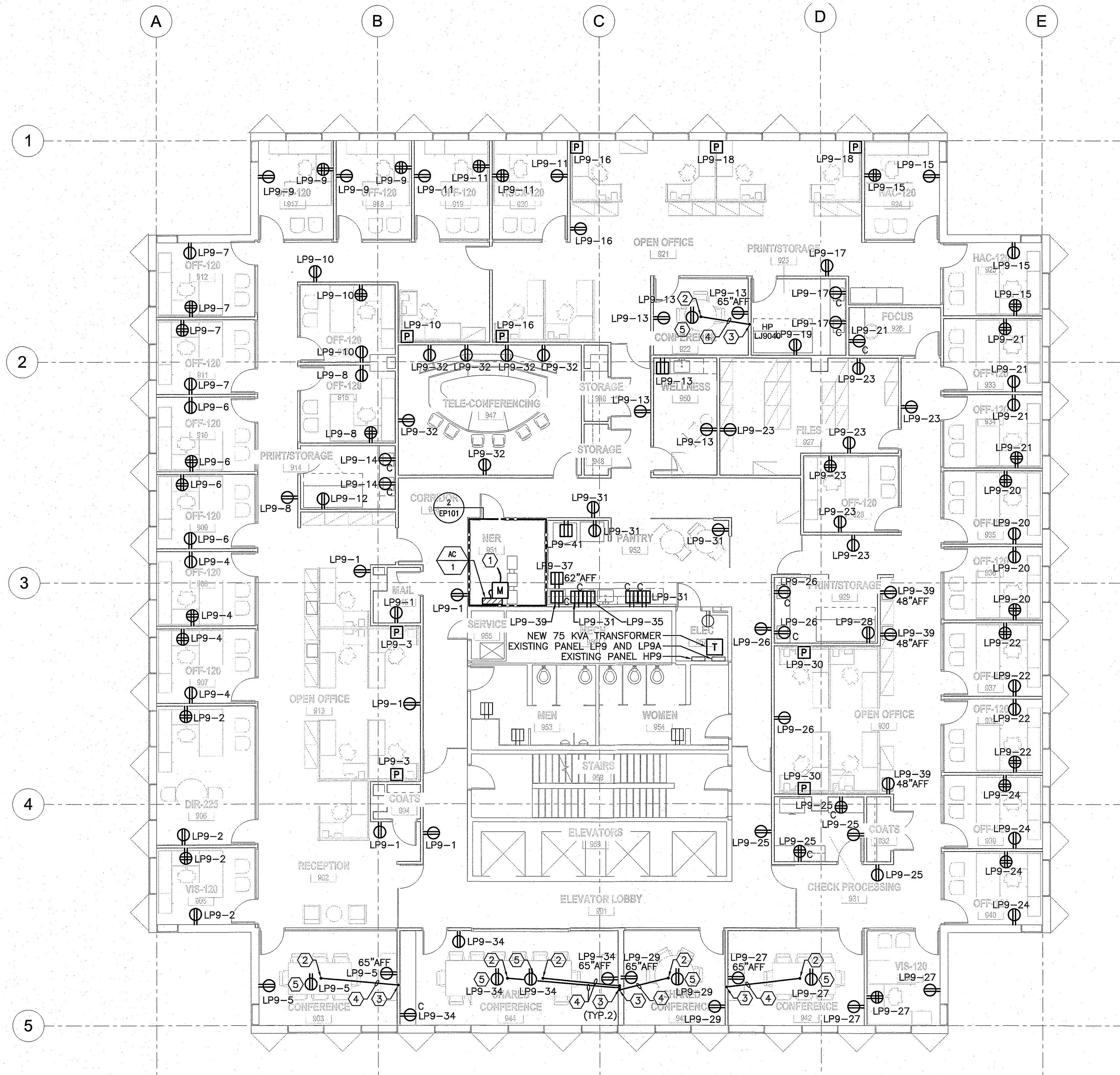


NOTE:

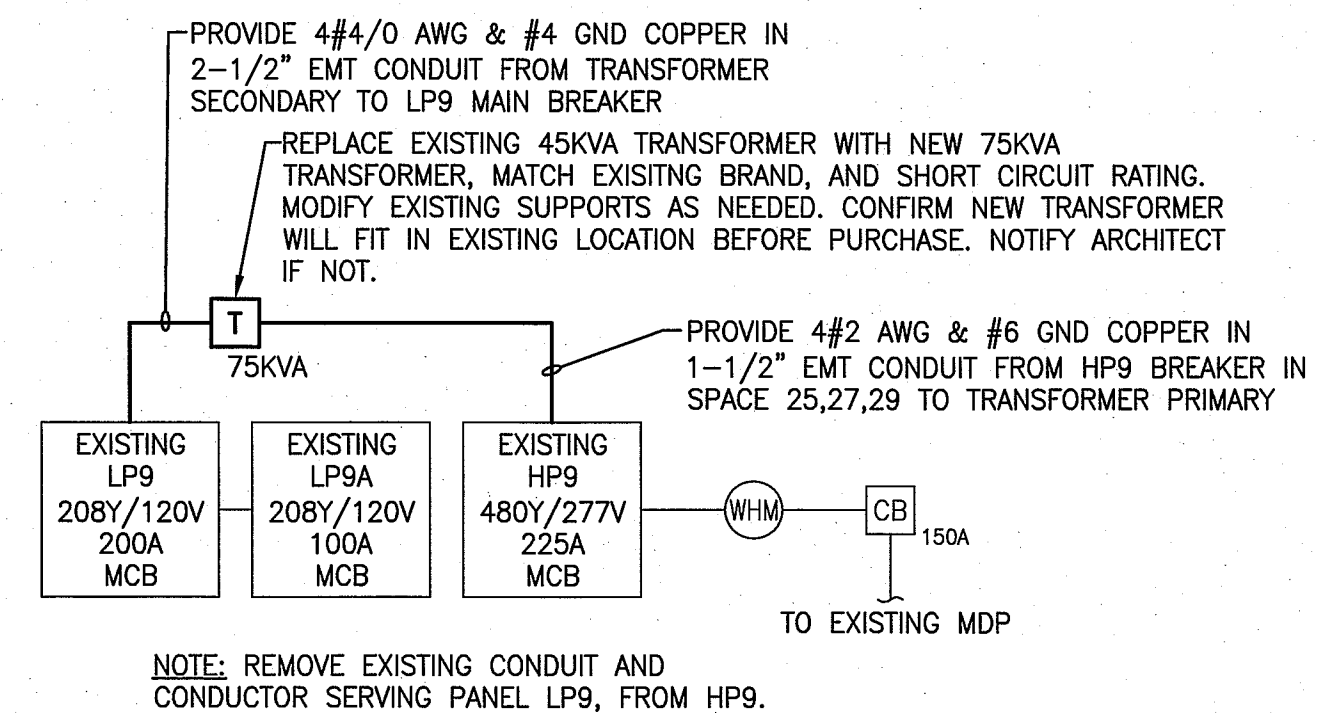
- SEE SHEET E-001 FOR LEGEND AND GENERAL NOTES.

KEYED NOTE:

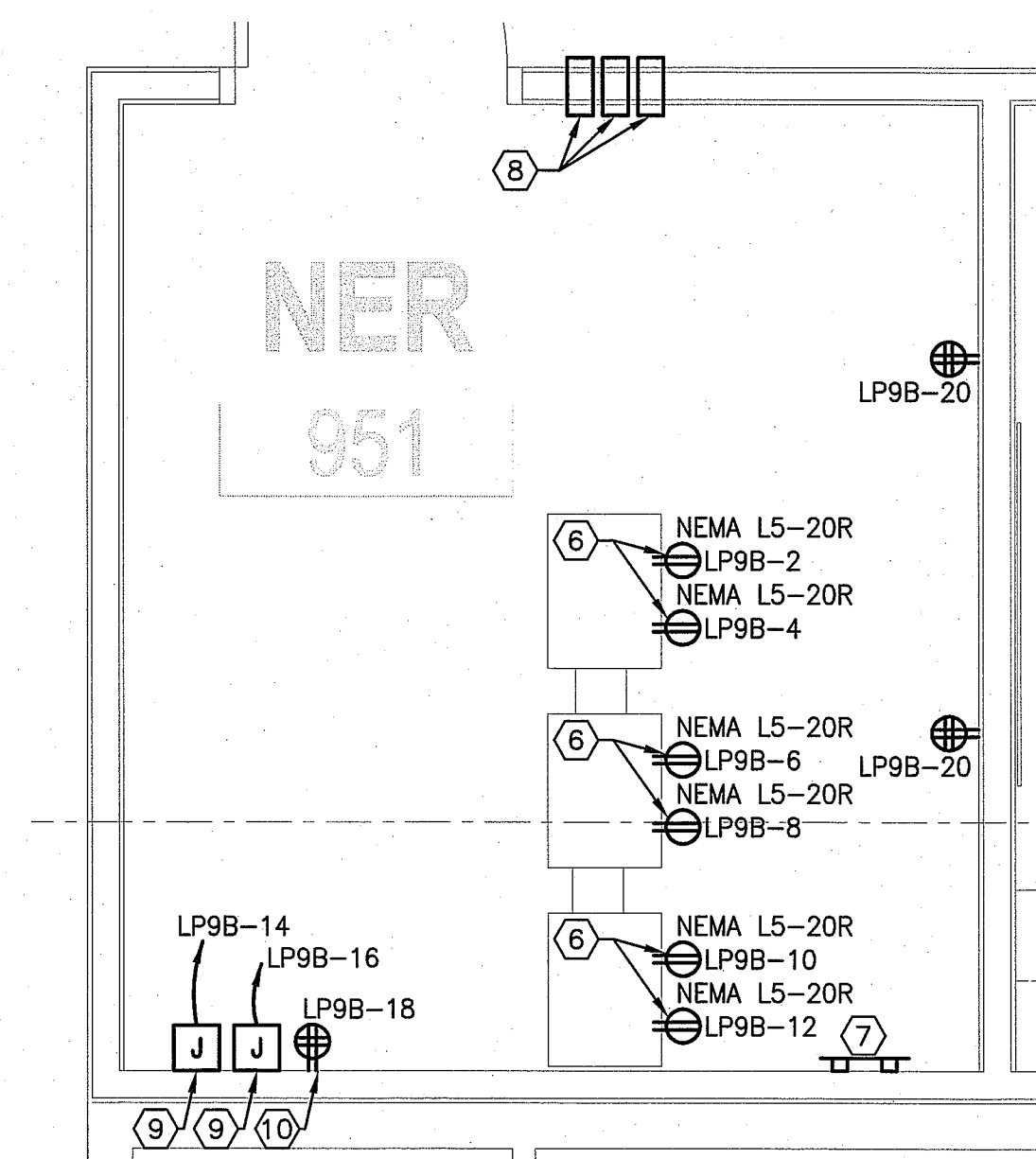
- TO AC-1 CONDENSING UNIT MOUNTED ON ROOF.
- PROVIDE CORE TO ACCOMMODATE 3/4" TO CONFERENCE TABLE. COORDINATE CORE LOCATION WITH FURNITURE VENDOR. CORE TO BE INSIDE CONFERENCE TABLE LEG.
- PROVIDE CORE TO ACCOMMODATE 3/4" IN WALL SPACE.
- PROVIDE 3/4" THROUGH 5TH FLOOR CEILING SPACE, FROM CONFERENCE TABLE TO 9TH FLOOR CEILING SPACE FOR POWER TO CONFERENCE TABLE.
- PROVIDE RECEPTACLE MOUNTED FLUSH WITHIN CONFERENCE TABLE LEG. COORDINATE INSTALLATION WITH CONFERENCE TABLE MANUFACTURE.
- PROVIDE RECEPTACLE AT 96" AFF FOR USE WITH IT EQUIPMENT. COORDINATE FINAL MOUNTING HEIGHT WITH BANK OF AMERICA IT INSTALLER. MOUNT RECEPTACLE TO UNITSTRUT SUPPORT, MOUNTED TO CEILING.
- PROVIDE TELECOMMUNICATIONS GROUND BAR AT 18" AFF. COORDINATE REQUIREMENTS WITH BANK OF AMERICA IT INSTALLER.
- PROVIDE EZ-PATH SERIES 33 FIRE STOPPING DEVICE.
- PROVIDE POWER FOR SECURITY SYSTEM ACCESS CONTROL POWER SUPPLY. COORDINATE MOUNTING WITH SECURITY VENDOR.
- PROVIDE QUAD RECEPTACLE FOR SECURITY SYSTEM CAMERA DVR. COORDINATE MOUNTING WITH SECURITY VENDOR.



1 NINTH FLOOR PLAN
1/8" = 1'-0"



3 ELECTRICAL ROOM 957 RISER DIAGRAM
NONE



2 NETWORK ROOM 951 ENLARGED PLAN
1/2" = 1'-0"

REVISIONS

BANK OF AMERICA - 9TH & 10TH FLOORS

BANK OF AMERICA
1 MONUMENT SQUARE
Portland, ME

TITLE
NINTH FLOOR ELECTRICAL POWER PLAN

DATE May 11, 2015
JOB NO. I5051.00

DRAWING NO.

EPI01

ISSUED FOR CONSTRUCTION

