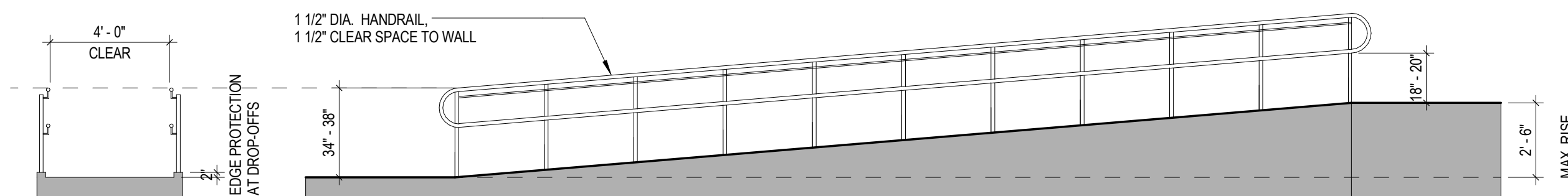


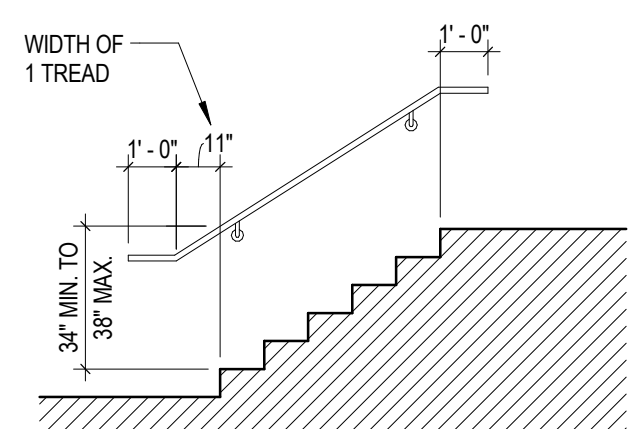
INTERMEDIATE LANDINGS SHALL BE PROVIDED AT INTERVALS NOT EXCEEDING 30' OF VERTICAL RISE AND AT EACH CHANGE OF DIRECTION.

WIDTH MUST BE OF 60" WITH OCCUPANCY OF 300 OR MORE.

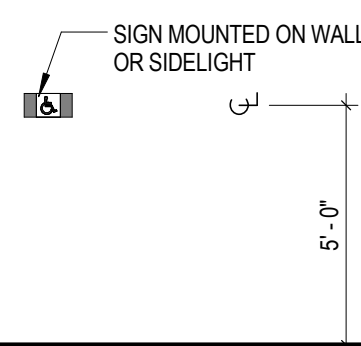
CROSS SLOPE NO GREATER THAN 1:50 (2%)



**13 RAMPS / HANDRAILS**

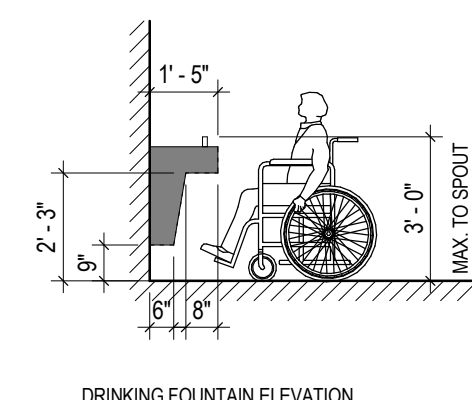
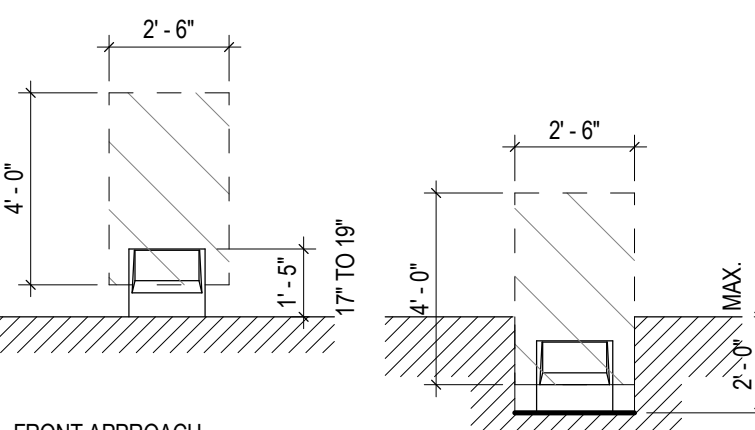
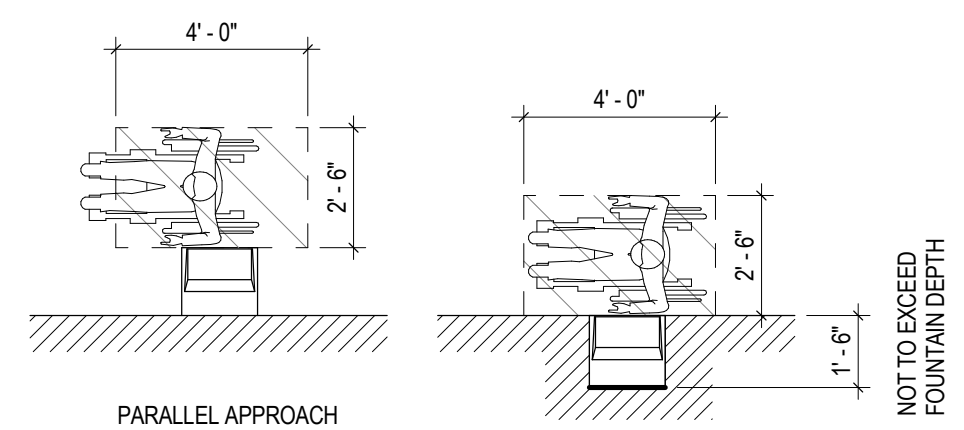


**12 STAIR RAILING DETAIL**

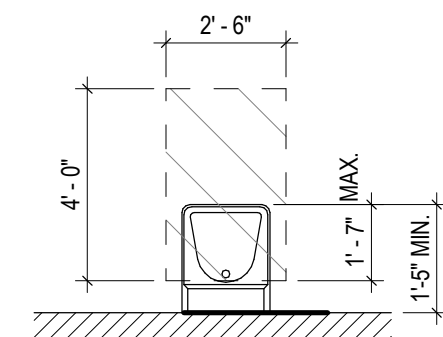


ALL SIGNAGE TO COMPLY WITH ADA AND MASS. ARCH. ACCESS BOARD REQUIREMENTS  
FINAL GRAPHICS TO BE APPROVED BY ARCHITECTS/TENANT  
PROVIDE CONCEALED FASTENERS OR ADHESIVES AS RECOMMENDED BY MANUFACTURERS AND AS REQUIRED FOR PERMANENT AND SECURE MOUNTING TO SUBSTRATES INDICATED. SUITABLE FOR CONDITIONS OF APPLICATION AND USE.

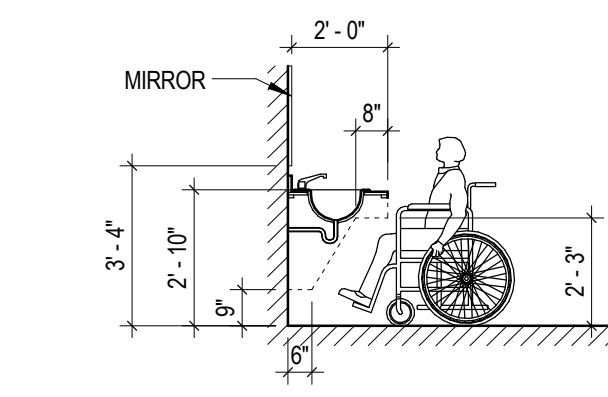
**11 INTERIOR TENANT SPACE SIGNAGE**



**9 DRINKING FOUNTAINS**

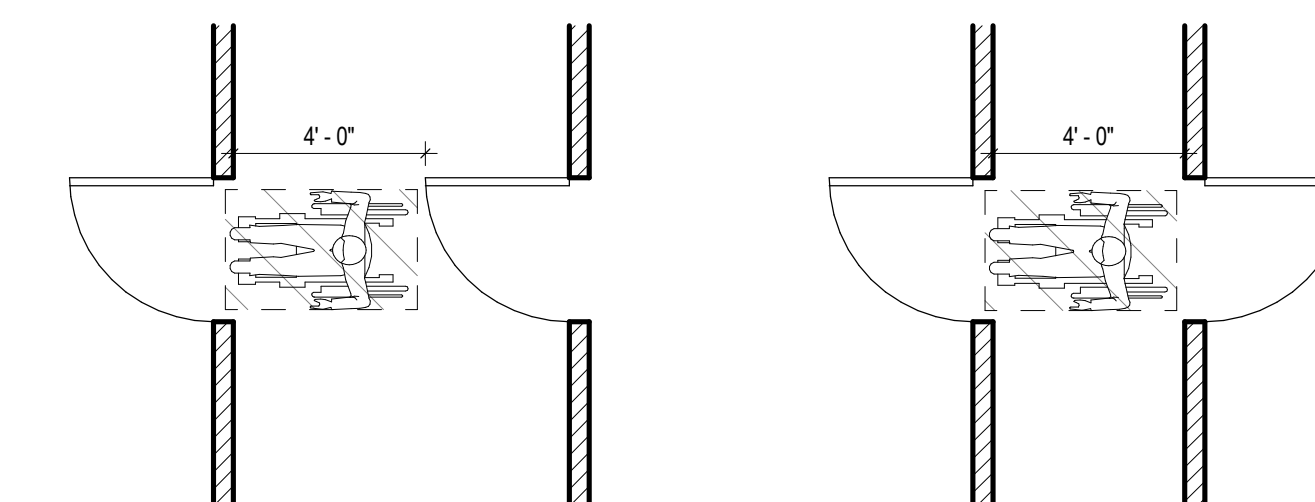


LAVATORY PLAN CLEARANCES

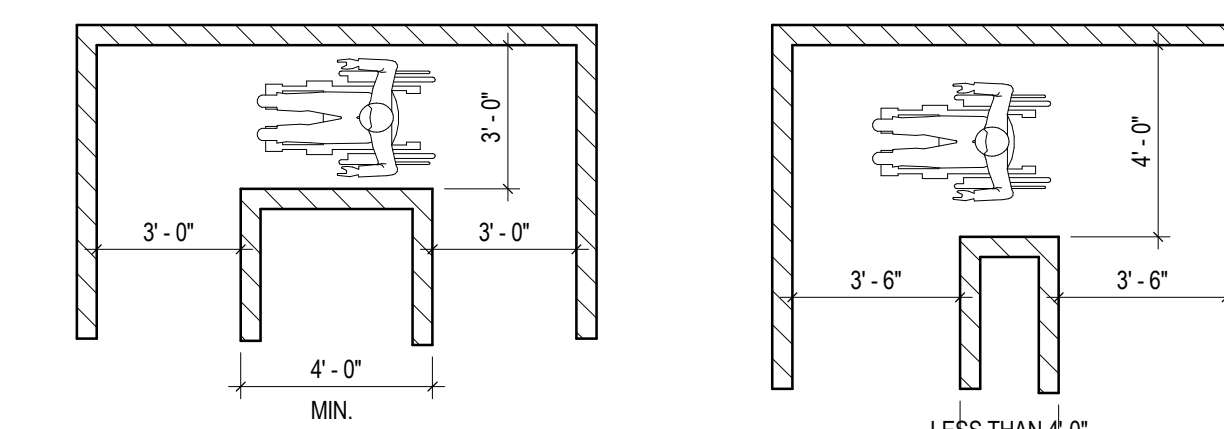


LAVATORY ELEVATION

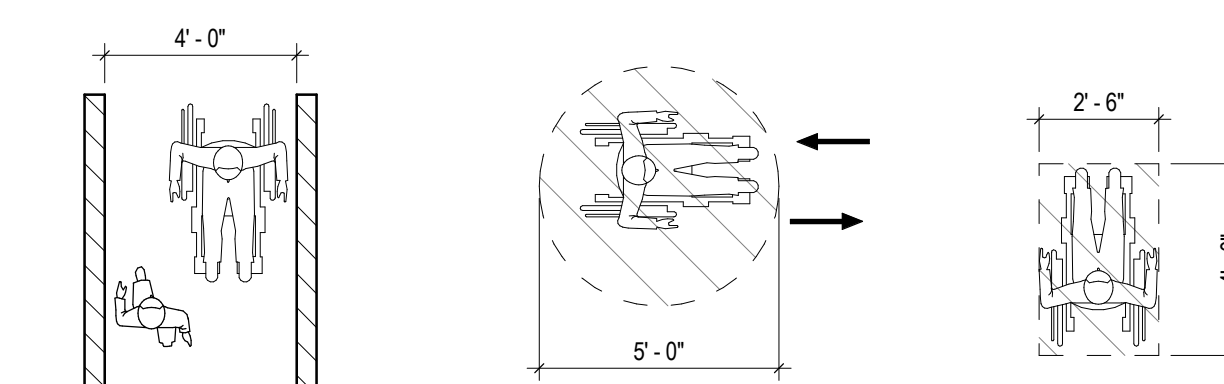
**8 LAVATORIES**



**6 TWO HINGED DOORS IN SERIES**

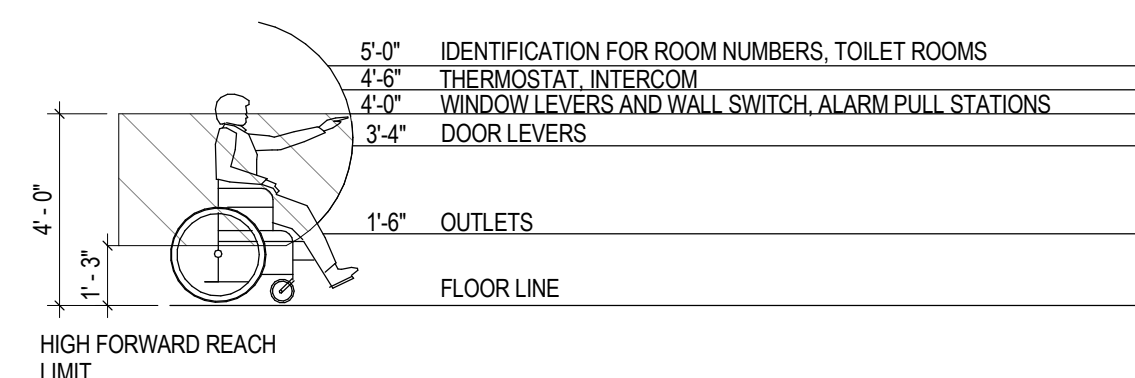


MINIMUM CLEARANCES FOR TURNING

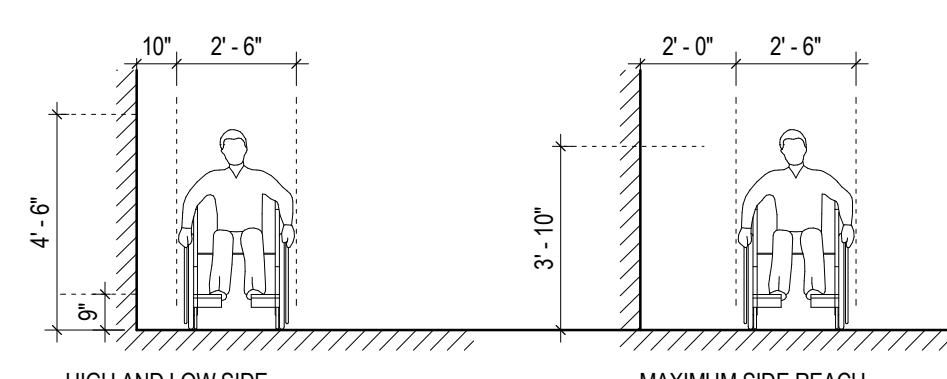


MINIMUM PASSAGE FOR ONE WHEELCHAIR AND ONE AMBULATORY PERSON

**5 ACCESSIBLE ROUTES**

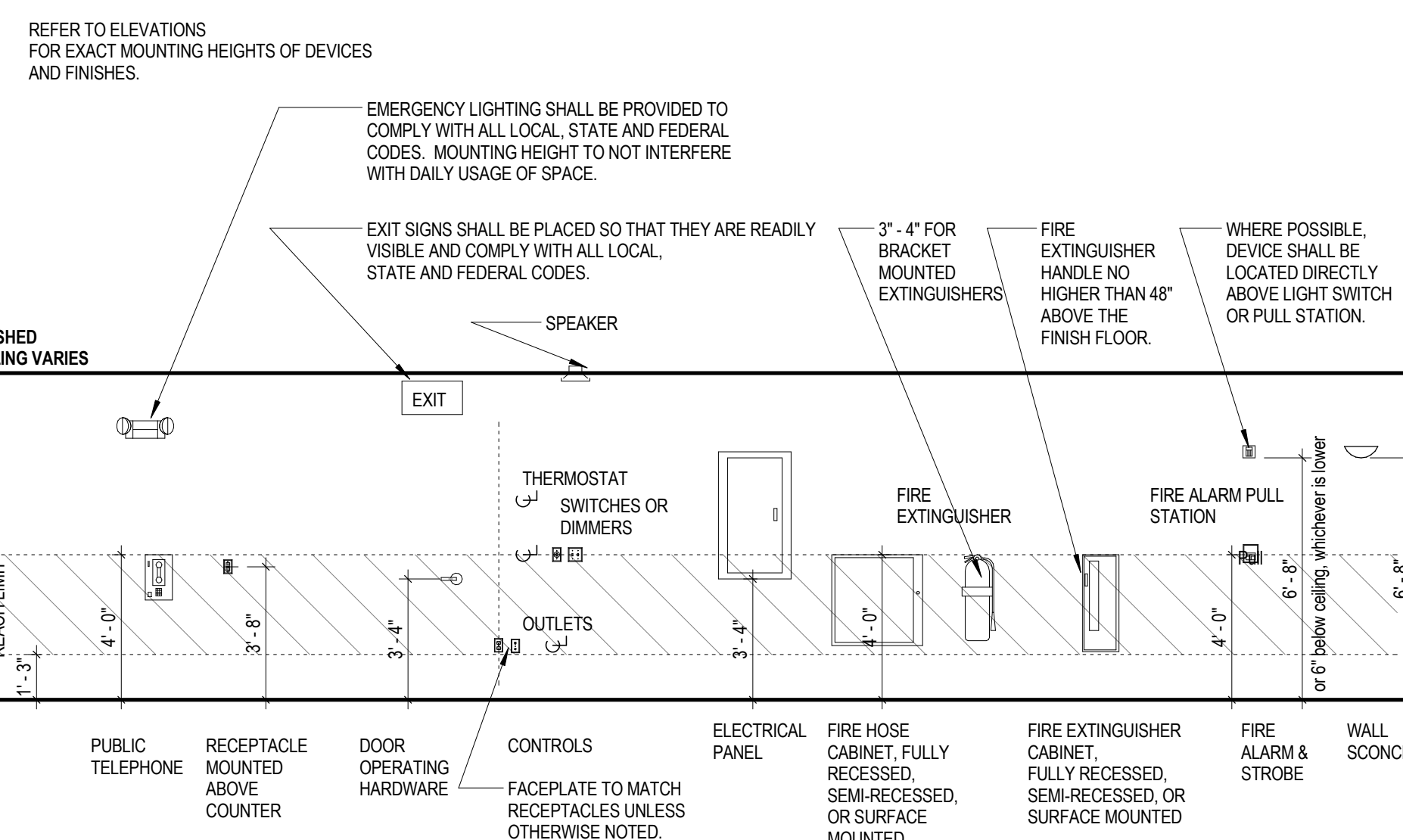


HIGH FORWARD REACH LIMIT

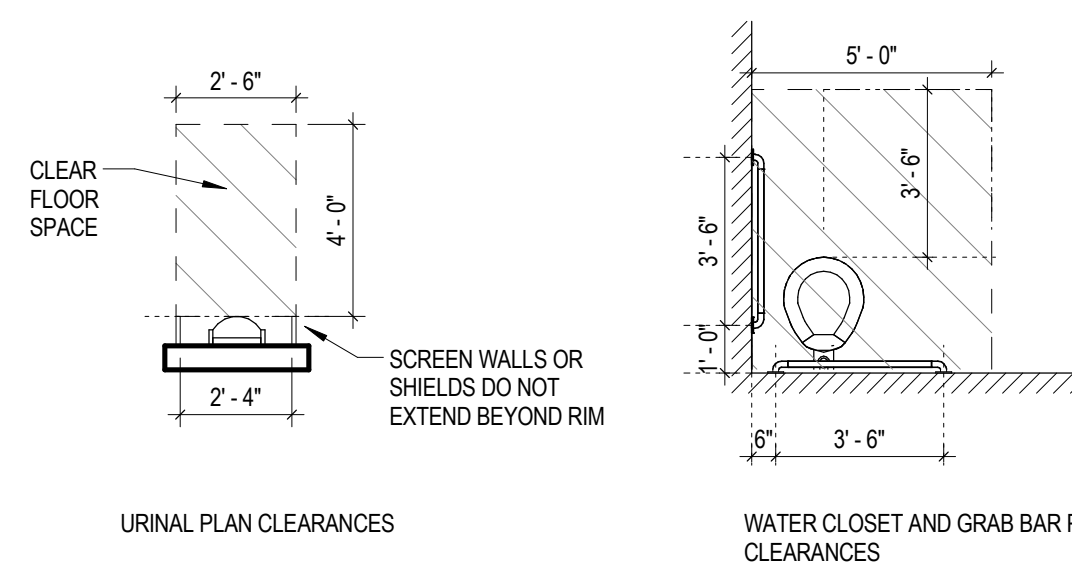


HIGH AND LOW SIDE REACH LIMIT

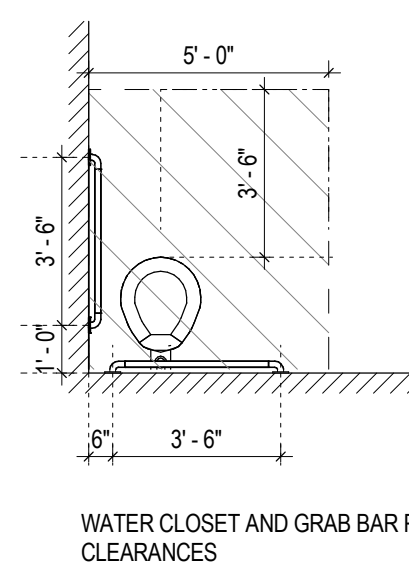
**4 REACH RANGES**



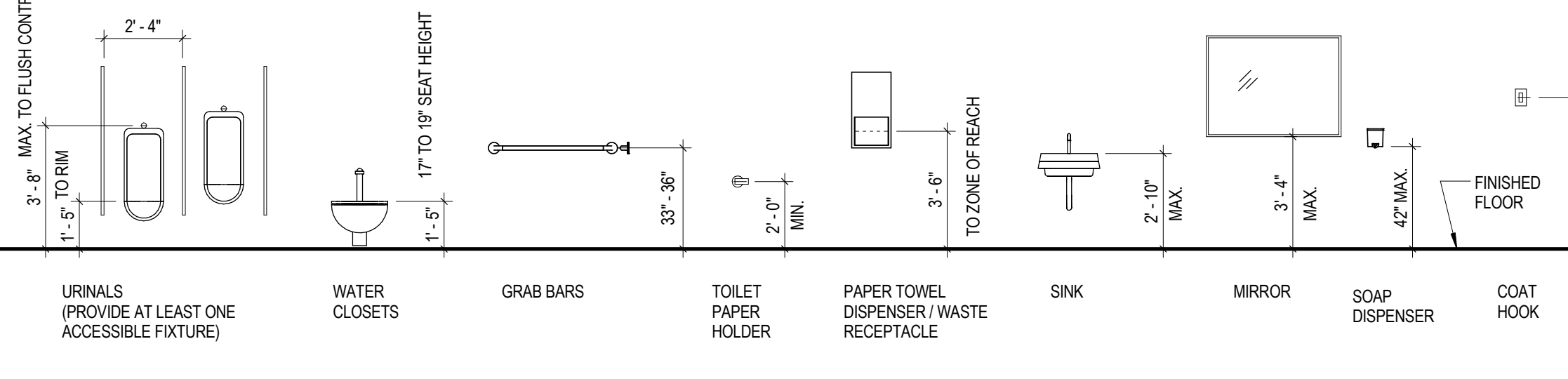
**10 MOUNTING HEIGHTS**



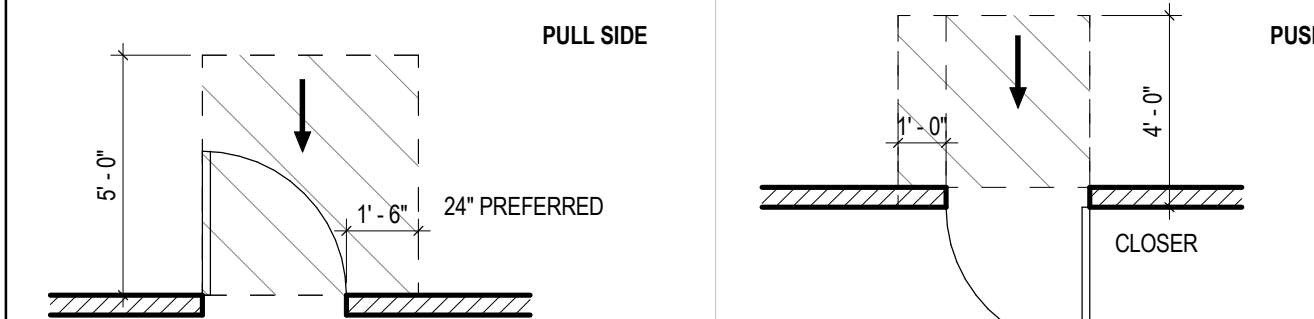
URINAL PLAN CLEARANCES



WATER CLOSET AND GRAB BAR PLAN CLEARANCES

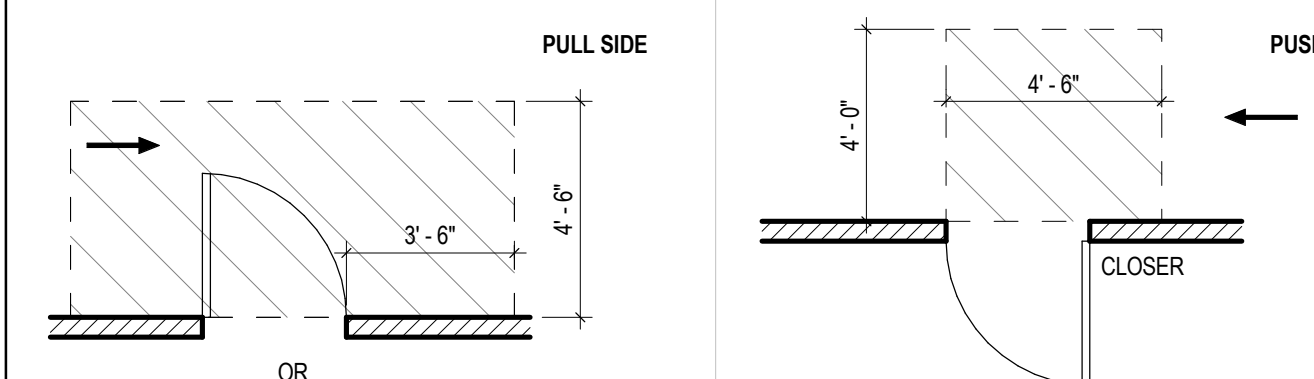


**7 FIXTURE AND ACCESSORY MOUNTING HEIGHTS**

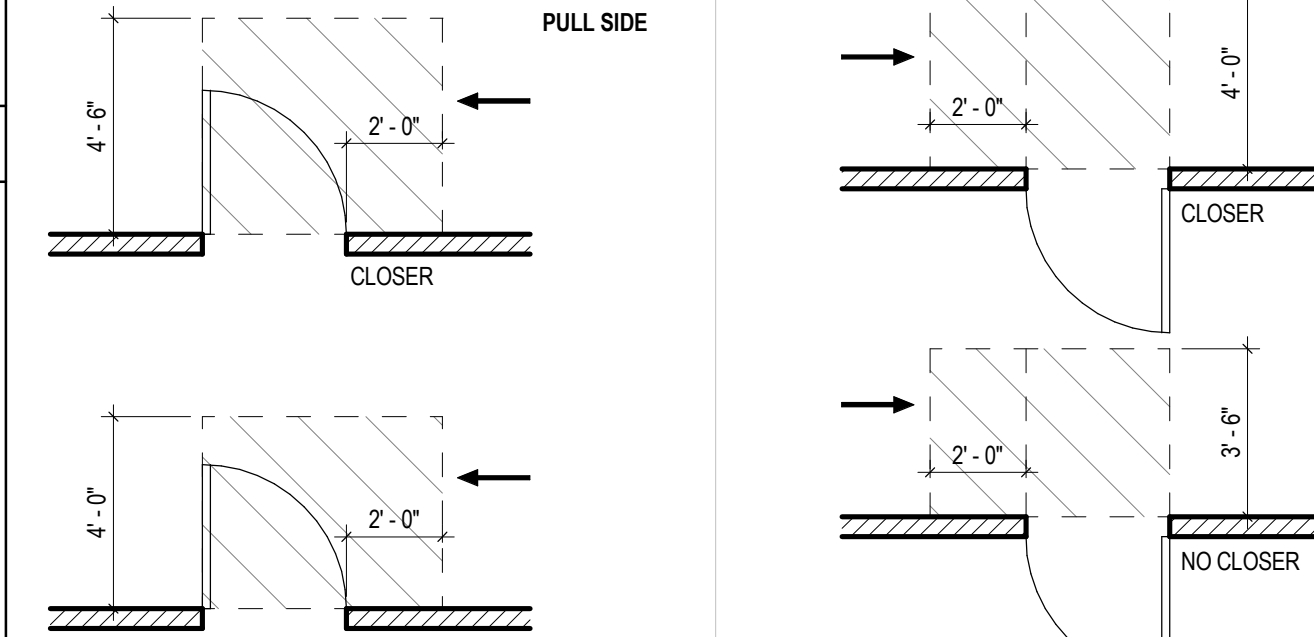


NOTE: ALL DOORS AT ALCOVES SHALL COMPLY WITH THE CLEARANCES FOR FRONT APPROACHES.

**FRONT APPROACHES**



**HINGE SIDE APPROACHES**



**LATCH SIDE APPROACHES**

**3 MANEUVERING CLEARANCES AT SWINGING DOORS**



FRONT APPROACH

SLIDE SIDE APPROACH

LATCH SIDE APPROACH

NOTE: ALL DOORS AT ALCOVES SHALL COMPLY WITH THE CLEARANCES FOR FRONT APPROACHES.

**2 MANEUVERING CLEAR. AT SLIDING / FOLDING DOORS**

**1 GENERAL NOTES**

NOTE:  
THE CONDITIONS ILLUSTRATED ON THIS SHEET CONSTITUTE LEGAL STANDARDS FOR HANDICAPPED ACCESSIBILITY. THEY DO NOT CONSTITUTE ACTUAL ARCHITECTURAL CONDITIONS FOR CONSTRUCTION IN THE COURSE OF THIS WORK.  
SEE ENCLOSED ARCHITECTURAL DRAWINGS FOR ACTUAL EXTENT OF WORK. NOT ALL CONDITIONS SHOWN HERE NECESSARILY OCCUR IN THIS PROJECT.  
CONTRACTOR TO INFORM ARCHITECT WHEN DUE TO FIELD CONDITIONS, ETC., ACTUAL CONSTRUCTION WILL NOT CONFORM TO THESE STANDARDS.  
REFER TO ICC A117.1 FOR ALL ACCESSIBILITY REQUIREMENTS.

**REVISIONS**

**BANK OF AMERICA - 9TH & 10TH FLOORS**

BANK OF AMERICA  
1 MONUMENT SQUARE  
Portland, ME

**TITLE**  
ACCESSIBILITY REQUIREMENTS

**DATE** May 11, 2015  
**JOB NO.** 15051.00

**DRAWING NO.** **A0.05**

ISSUED FOR CONSTRUCTION