

DOOR SCHEDULE												
NO.	DOOR TYPE	MAT.	FIN.	WIDTH	HEIGHT	THICK.	FRAME TYPE	MAT.	FIN.	HWDR.	FIRE RATING	NOTES
701	2	WD-SC	NAT	3'-0"	7'-0"	1 3/4"	A	HM	NAT	HW-1	--	5
702	3	WD-SC	NAT	3'-0"	7'-0"	1 3/4"	A	HM	NAT	HW-2	--	
703	3	WD-SC	NAT	3'-0"	7'-0"	1 3/4"	A	HM	NAT	HW-2	--	
704	2	WD-SC	NAT	3'-0"	7'-0"	1 3/4"	A	HM	NAT	HW-2	--	
705	2	WD-SC	NAT	3'-0"	7'-0"	1 3/4"	A	HM	NAT	HW-1	--	5
706	2	WD-SC	NAT	3'-0"	7'-0"	1 3/4"	A	HM	NAT	HW-2	--	
707	2	WD-SC	NAT	3'-0"	7'-0"	1 3/4"	A	HM	NAT	HW-2	--	
708	2	WD-SC	NAT	3'-0"	7'-0"	1 3/4"	A	HM	NAT	HW-2	--	
709	2	WD-SC	NAT	3'-0"	7'-0"	1 3/4"	A	HM	NAT	HW-2	--	
710	2	WD-SC	NAT	3'-0"	7'-0"	1 3/4"	A	HM	NAT	HW-2	--	
711	2	WD-SC	NAT	3'-0"	7'-0"	1 3/4"	A	HM	NAT	HW-2	--	
712	4	WD-SC	NAT	PR-3'-0"	7'-0"	1 3/4"	A	HM	NAT	HW-3	1 HR	
717	3	WD-SC	NAT	3'-0"	7'-0"	1 3/4"	A	HM	NAT	HW-3	--	
718	2	WD-SC	NAT	3'-0"	7'-0"	1 3/4"	A	HM	NAT	HW-4	--	
719	3	WD-SC	NAT	3'-0"	7'-0"	1 3/4"	A	HM	NAT	HW-4	--	
720	3	WD-SC	NAT	3'-0"	7'-0"	1 3/4"	A	HM	NAT	HW-4	--	
721	3	WD-SC	NAT	3'-0"	7'-0"	1 3/4"	A	HM	NAT	HW-4	--	
722	3	WD-SC	NAT	3'-0"	7'-0"	1 3/4"	A	HM	NAT	HW-4	--	
723	EXIST	--	--	--	--	--	--	--	--	--	--	6
725	2	WD-SC	NAT	3'-0"	7'-0"	1 3/4"	A	HM	NAT	HW-2	--	
801	1	GL	FF	3'-6"	8'-0"	--	--	--	--	HW-5	--	7, 8
802	2	WD-SC	NAT	3'-0"	7'-0"	1 3/4"	A	HM	NAT	HW-2	--	
803	1	GL	FF	3'-6"	8'-0"	--	--	--	--	HW-5	--	7, 8
804	2	WD-SC	NAT	3'-0"	7'-0"	1 3/4"	A	HM	NAT	HW-2	--	
805	2	WD-SC	NAT	3'-0"	7'-0"	1 3/4"	A	HM	NAT	HW-2	--	
806	2	WD-SC	NAT	3'-0"	7'-0"	1 3/4"	A	HM	NAT	HW-2	--	
807	2	WD-SC	NAT	3'-0"	7'-0"	1 3/4"	A	HM	NAT	HW-2	--	
808	2	WD-SC	NAT	3'-0"	7'-0"	1 3/4"	A	HM	NAT	HW-2	--	
809	2	WD-SC	NAT	3'-0"	7'-0"	1 3/4"	A	HM	NAT	HW-2	--	
810	4	WD-SC	NAT	PR-3'-0"	7'-0"	1 3/4"	A	HM	NAT	HW-3	1 HR	
811	2	WD-SC	NAT	3'-0"	7'-0"	1 3/4"	A	HM	NAT	HW-4	--	
812	3	WD-SC	NAT	3'-0"	7'-0"	1 3/4"	A	HM	NAT	HW-4	--	
813	3	WD-SC	NAT	3'-0"	7'-0"	1 3/4"	A	HM	NAT	HW-6	--	
816	3	WD-SC	NAT	3'-0"	7'-0"	1 3/4"	A	HM	NAT	HW-4	--	
819	2	WD-SC	NAT	3'-0"	7'-0"	1 3/4"	A	HM	NAT	HW-2	--	

MATERIAL/FINISH ABBREVIATIONS

HM HOLLOW METAL
 NAT NATURAL CLEAR FINISH
 PT PAINT
 SC SOLID CORE
 WD WOOD

HARDWARE

HW-1 PUSH-PULL SET
 MAGNETIC LOCK
 ACCESS CARD SYSTEM
 HINGES
 CLOSER
 STOP
 HW-2 LOCKSET
 HINGES
 STOP
 HW-3 LOCKSET
 HINGES
 CLOSER
 MAGNETIC HOLDER
 PASSAGE SET
 HINGES
 STOP
 HW-5 BUILDING STANDARD HARDWARE
 INCLUDING HINGES, PUSH-PULL,
 CLOSER, MAGNETIC LOCK, CARD
 READER, AND PROXIMITY SENSOR.
 HW-6 PRIVACY SET
 HINGES
 STOP

NOTES

- ALL DOORS TO BE PREFINISHED STAINED BIRCH SOLID CORE WOOD. GLASS WHERE NOTED. LOCK AND LATCHSETS TO BE SARGENT 10 LINE. LEVER HANDLES ONLY.
- HARDWARE FINISH TO BE BRUSHED CHROME.
- ALL DOORS TO BE ON OWNER'S MASTER KEY SYSTEM.
- COORDINATE PROGRAMMING OF SWIPE CARD SYSTEM WITH OWNER'S VENDOR.
- ADJUST OR REPLACE CLOSER TO PERMIT 170 DEGREE SWING.
- PROVIDE LOCKING DEVICE THAT UNLOCKS WHEN FIRE ALARM ACTIVATES.
- BUILDING STANDARD FRAMELESS GLASS DOOR WITH GLASS SIDELIGHT

ROOM FINISH SCHEDULE

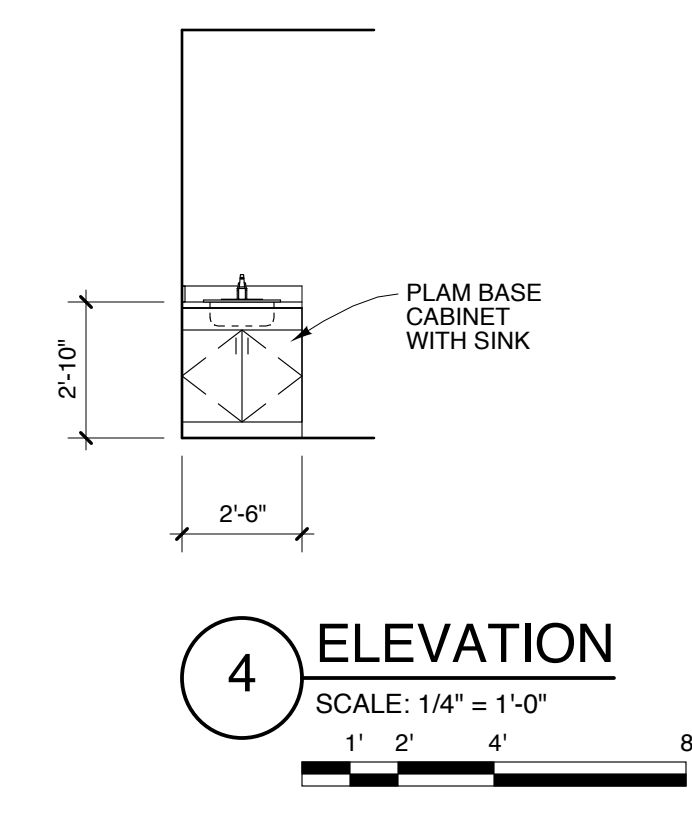
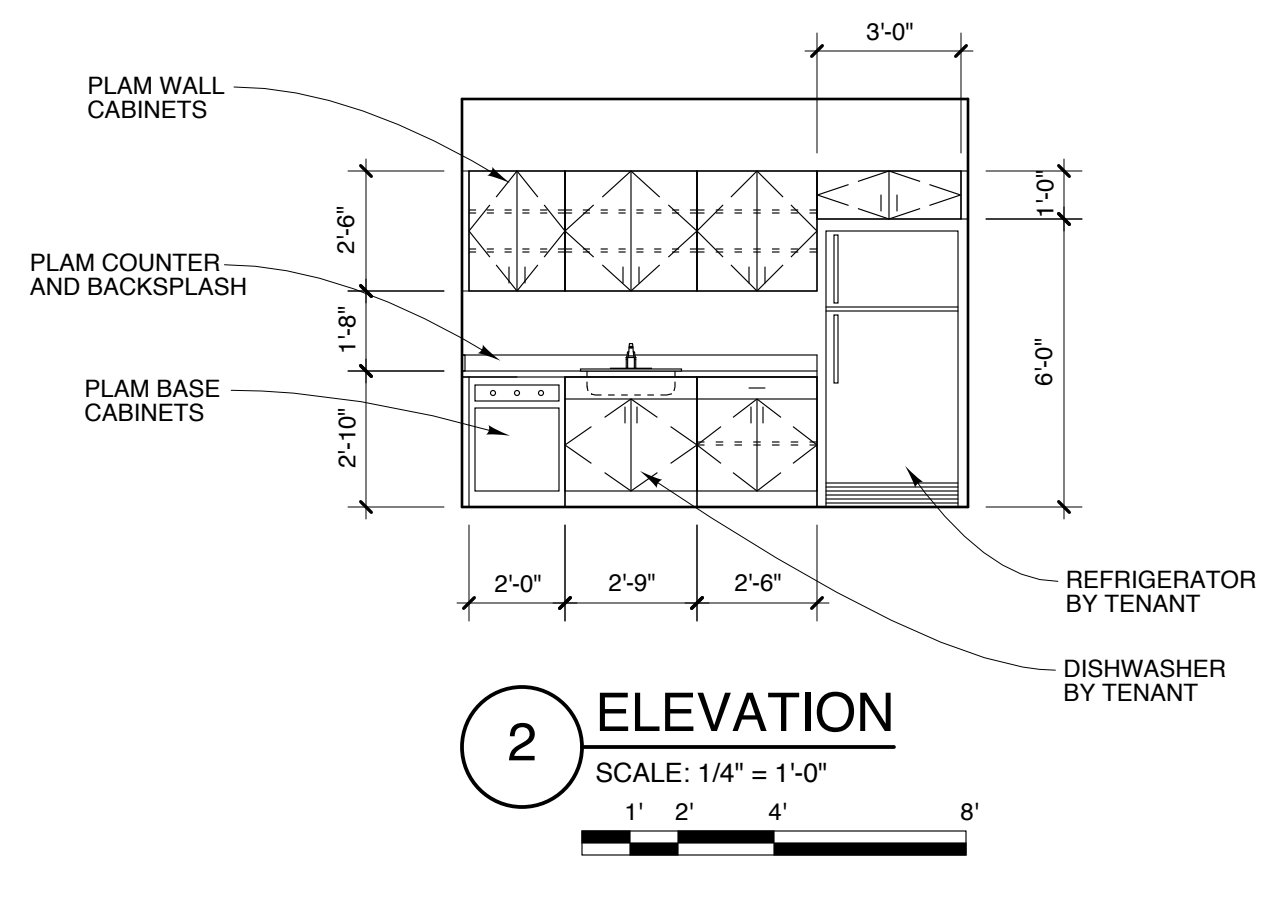
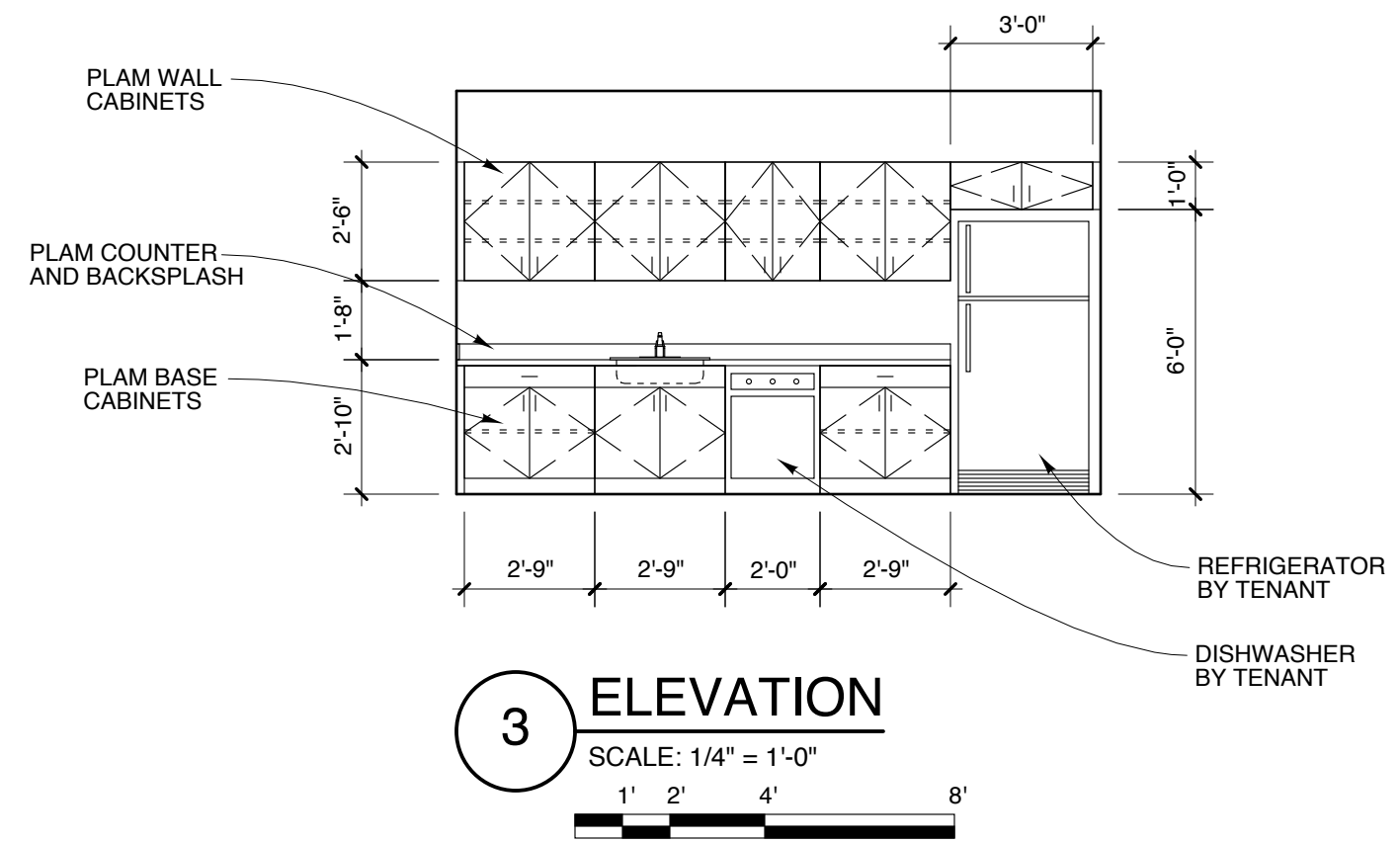
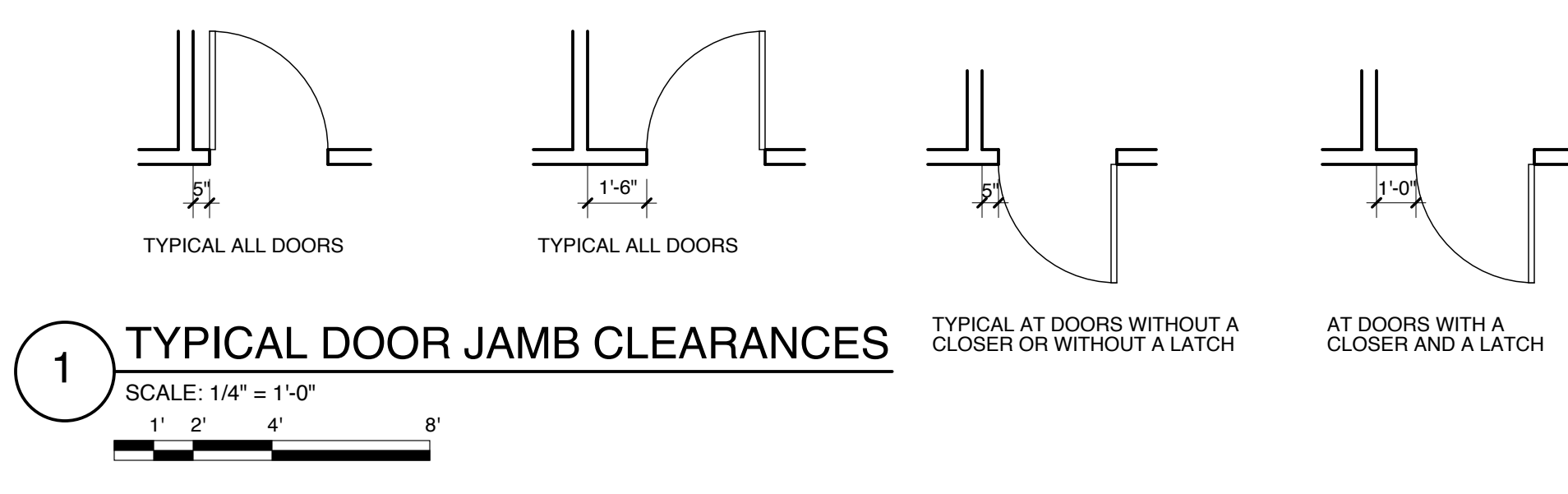
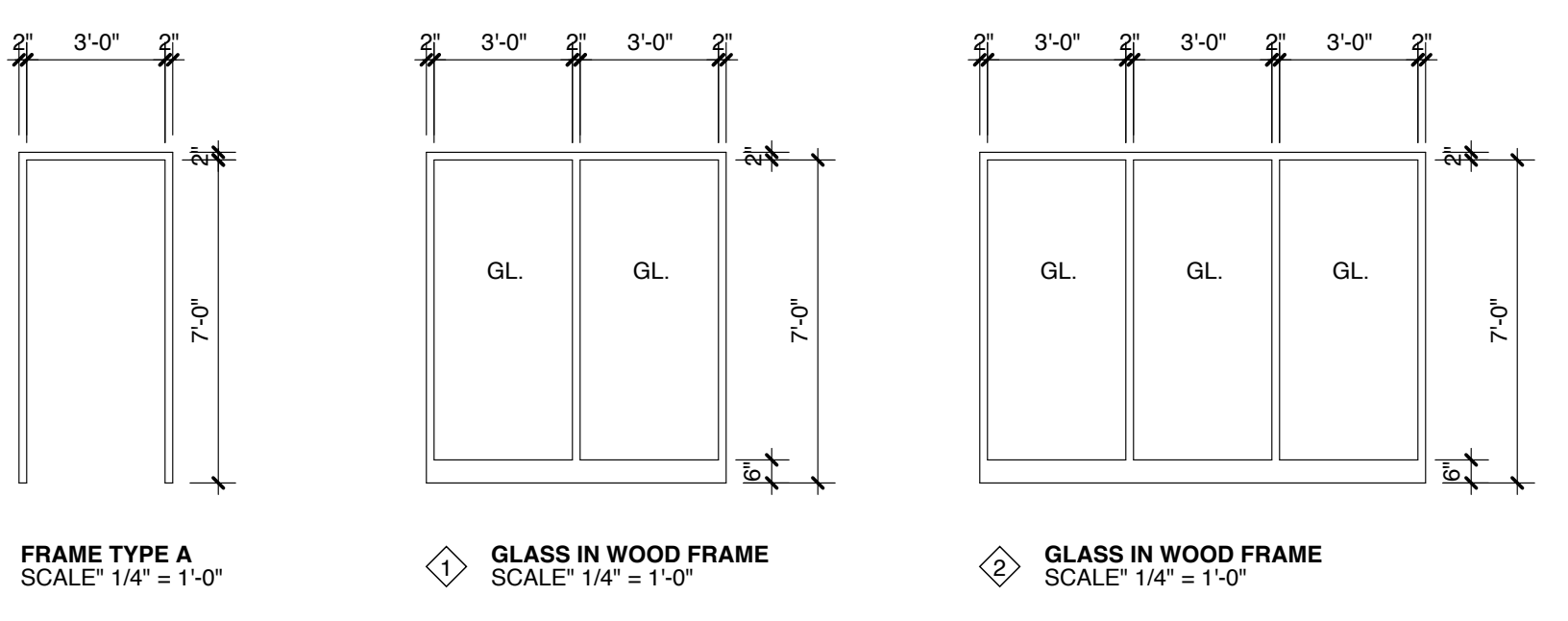
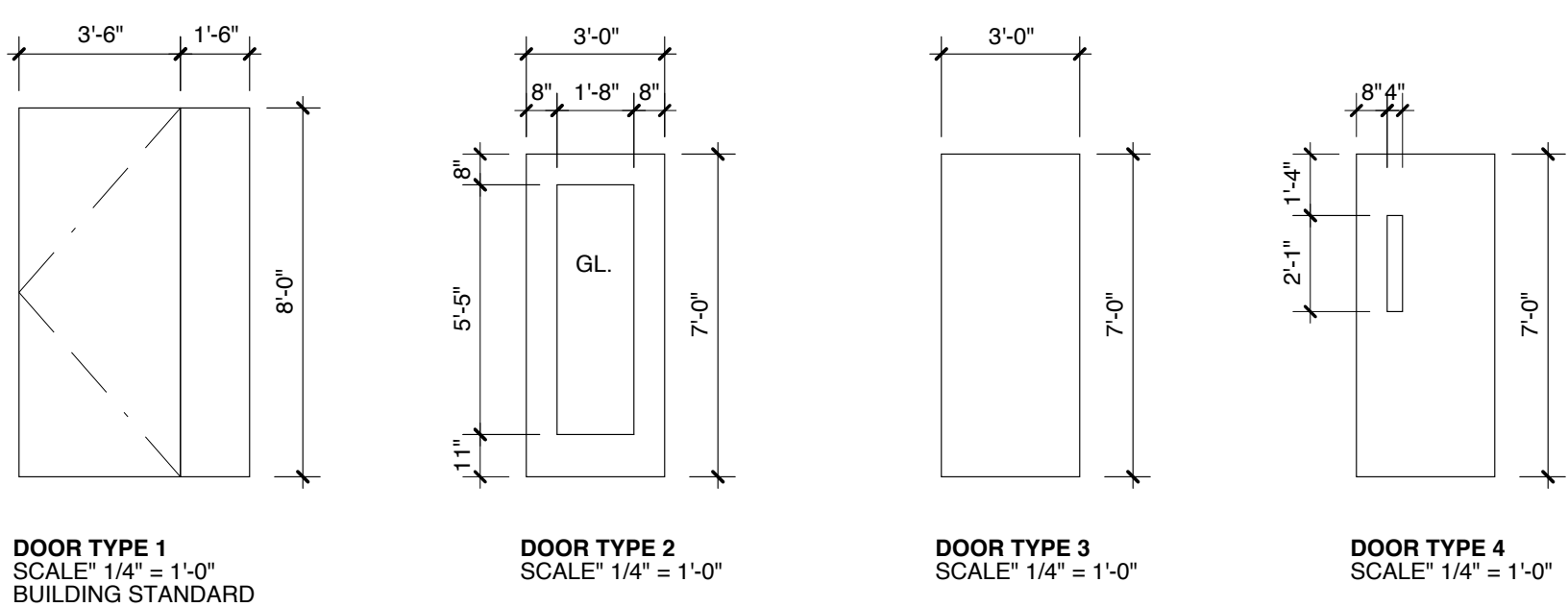
NO.	NAME	FLOORS							
		BASE	WALLS	TRIM	CEILING				NOTES
701	LOBBY	CPT	VB	PT	PT	8'-6"	ACT	1	
702	OFFICE	CPT	VB	PT	PT	8'-6"	ACT	1	
703	OFFICE	CPT	VB	PT	PT	8'-6"	ACT	1	
704	OFFICE	CPT	VB	PT	PT	8'-6"	ACT	1	
705	OPEN OFFICE	CPT	VB	PT	PT	8'-6"	ACT	1	
706	OFFICE	CPT	VB	PT	PT	8'-6"	ACT	1	
707	OFFICE	CPT	VB	PT	PT	8'-6"	ACT	1	
708	OFFICE	CPT	VB	PT	PT	8'-6"	ACT	1	
709	BREAK ROOM	CPT	VB	PT	PT	8'-6"	ACT	1	
710	OFFICE	CPT	VB	PT	PT	8'-6"	ACT	1	
711	OFFICE	CPT	VB	PT	PT	8'-6"	ACT	1	
712	PASSAGE	CPT	VB	PT	PT	8'-6"	ACT	1	
713	ALCOVE	CPT	VB	PT	PT	8'-6"	ACT	1	
714	ALCOVE	CPT	VB	PT	PT	8'-6"	ACT	1	
715	ALCOVE	CPT	VB	PT	PT	8'-6"	ACT	1	
716	ALCOVE	CPT	VB	PT	PT	8'-6"	ACT	1	
717	SERVER	VCT	VB	PT	PT	8'-6"	ACT	1	
718	CONFERENCE	CPT	VB	PT	PT	8'-6"	ACT	1	
719	STORAGE	CPT	VB	PT	PT	8'-6"	ACT	1	
720	STORAGE	CPT	VB	PT	PT	8'-6"	ACT	1	
721	KITCHEN	VCT	VB	PT	PT	8'-6"	ACT	1	
722	STORAGE	CPT	VB	PT	PT	8'-6"	ACT	1	
723	HALL	CPT	VB	PT	PT	8'-6"	ACT	1	
724	OPEN OFFICE	CPT	VB	PT	PT	8'-6"	ACT	1	
725	OFFICE	CPT	VB	PT	PT	8'-6"	ACT	1	
S1	STAIR	CPT	VB	PT	PT	8'-6"	ACT	2	
801	RECEPTION	CPT	VB	PT	PT	8'-6"	ACT	1	
802	OFFICE	CPT	VB	PT	PT	8'-6"	ACT	1	
803	OPEN OFFICE	CPT	VB	PT	PT	8'-6"	ACT	1	
804	OFFICE	CPT	VB	PT	PT	8'-6"	ACT	1	
805	OFFICE	CPT	VB	PT	PT	8'-6"	ACT	1	
806	OFFICE	CPT	VB	PT	PT	8'-6"	ACT	1	
807	CONFERENCE	CPT	VB	PT	PT	8'-6"	ACT	1	
808	OFFICE	CPT	VB	PT	PT	8'-6"	ACT	1	
809	OFFICE	CPT	VB	PT	PT	8'-6"	ACT	1	
810	PASSAGE	CPT	VB	PT	PT	8'-6"	ACT	1	
811	CONFERENCE	CPT	VB	PT	PT	8'-6"	ACT	1	
812	KITCHEN	VCT	VB	PT	PT	8'-6"	ACT	1	
813	NURSING	CPT	VB	PT	PT	8'-6"	ACT	1	
814	ALCOVE	CPT	VB	PT	PT	8'-6"	ACT	1	
815	ALCOVE	CPT	VB	PT	PT	8'-6"	ACT	1	
816	STORAGE	CPT	VB	PT	PT	8'-6"	ACT	1	
817	HALL	CPT	VB	PT	PT	8'-6"	ACT	1	
818	OPEN OFFICE	CPT	VB	PT	PT	8'-6"	ACT	1	
819	OFFICE	CPT	VB	PT	PT	8'-6"	ACT	1	
S1	STAIR	CPT	VB	PT	PT	8'-6"	ACT	2	

MATERIAL/FINISH ABBREVIATIONS

ACT SUSPENDED ACOUSTICAL TILE
 CPT CARPET TILE
 PT PAINT
 VB VINYL BASE
 VCT VINYL COMPOSITION TILE

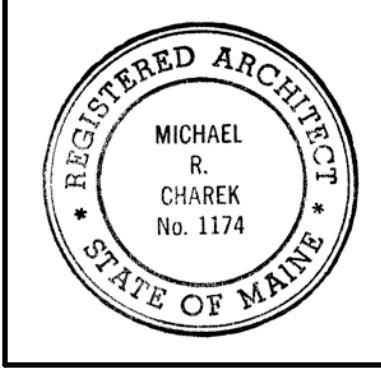
FINISH NOTES

- FINISH AND COLOR SELECTION BY TENANT FROM OWNER'S SAMPLES.
- VINYL NOSING ON STAIR TREADS.



Michael Charek Architects

25 Hartley Street
 Portland, Maine 04103
 (207) 761-0556



Offices for BlueTarp Financial

Seventh and Eighth Floor
 One Monument Square
 Portland, Maine

Title
 SCHEDULES AND DETAILS

Scale: AS NOTED

Date: 4/10/15

Revisions

Sheet
A5