

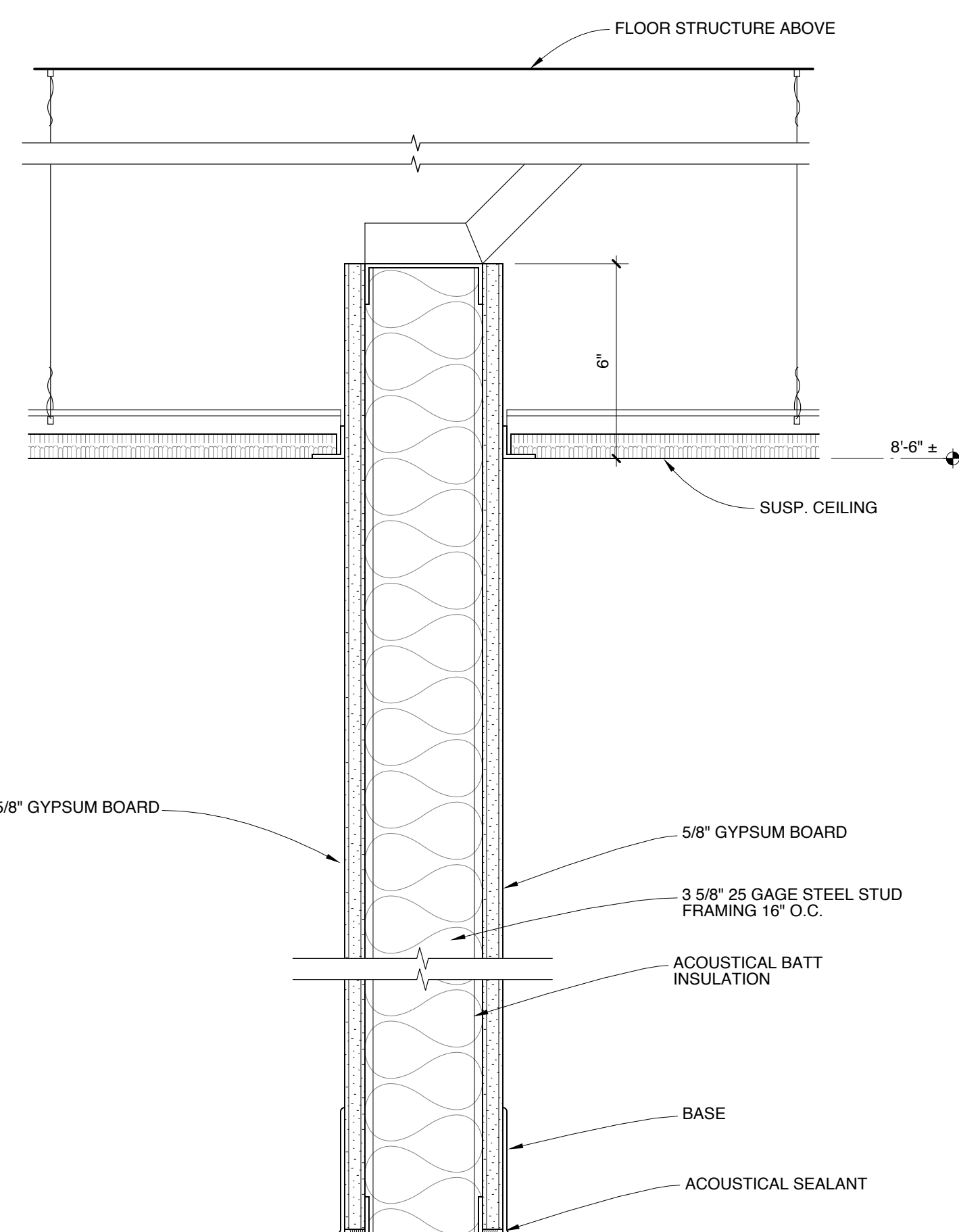
**NEW WORK KEYNOTES -- SHEET A1 & A2**

- N01** CLEAN AND REINSTALL WINDOW BLINDS.
- N02** FURR OUT AND FINISH EXISTING PARTITION ENCLLOSING EXISTING STAIR WITH STEEL STUDS AND GYPSUM BOARD AS SHOWN. STAIR ENCLOSURE TO BE ONE HOUR FIRE RATED.

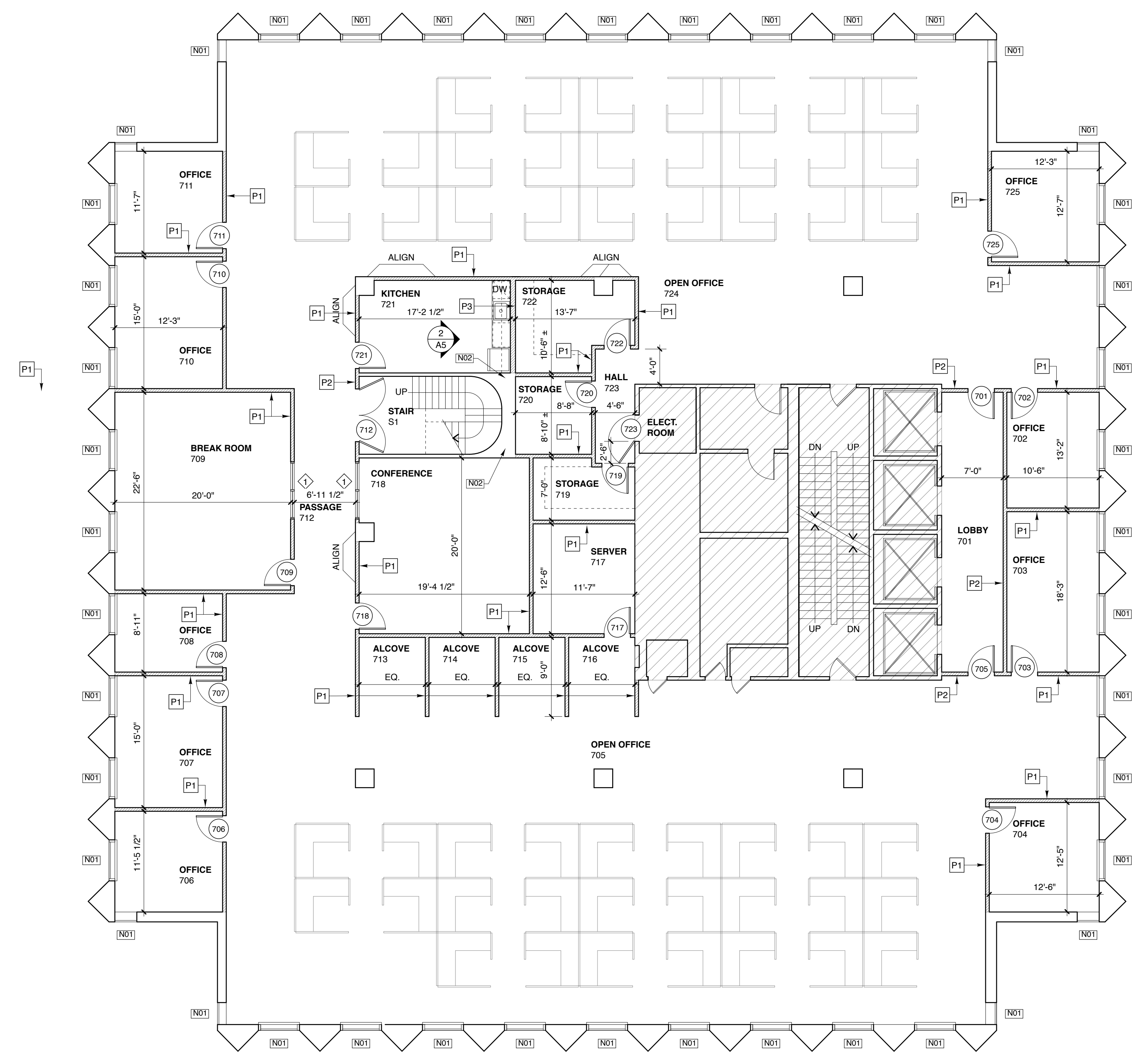
**PARTITION TYPES - SEE DETAIL SECTIONS ON SHEET A1 AND A2**

- P1** 3 5/8" STEEL STUD FRAMING 16" O.C.  
5/8" GYPSUM BOARD BOTH SIDES  
ACOUSTIC INSULATION FULL HEIGHT  
PARTITION HEAD AT 9'-0" A.F.F. - BRACE TO STRUCTURE ABOVE  
ACOUSTICAL SEALANT AT FLOOR TRACK
- P2** 3 5/8" STEEL STUD FRAMING 16" O.C.  
5/8" GYPSUM BOARD BOTH SIDES  
ACOUSTIC INSULATION FULL HEIGHT  
PARTITION HEAD UP TO UNDERSIDE OF SLAB ABOVE.  
ACOUSTICAL SEALANT AT FLOOR TRACK
- P3** 6" STEEL STUD FRAMING 16" O.C.  
5/8" GYPSUM BOARD BOTH SIDES  
ACOUSTIC INSULATION FULL HEIGHT  
PARTITION HEAD AT 9'-0" A.F.F. - BRACE TO STRUCTURE ABOVE  
ACOUSTICAL SEALANT AT FLOOR TRACK

NOTE: PARTITIONS AND WALLS NOT OTHERWISE NOTED BY PARTITION TYPE OR BY NEW WORK KEYNOTE ARE EXISTING TO REMAIN. PATCH AS NECESSARY AND PAINT.



**1 PARTITION TYPE P1**  
SCALE: 3" = 1'-0"  
1" 2" 4" 8"



**1 FLOOR PLAN**  
SCALE: 1/8" = 1'-0"  
2' 4' 8' 16'

**PARTITIONS/WALLS KEY**  
 - - - - - EXISTING TO REMAIN  
 = = = = = NEW PARTITION  
 [Hatched Box] AREA N.I.C.

