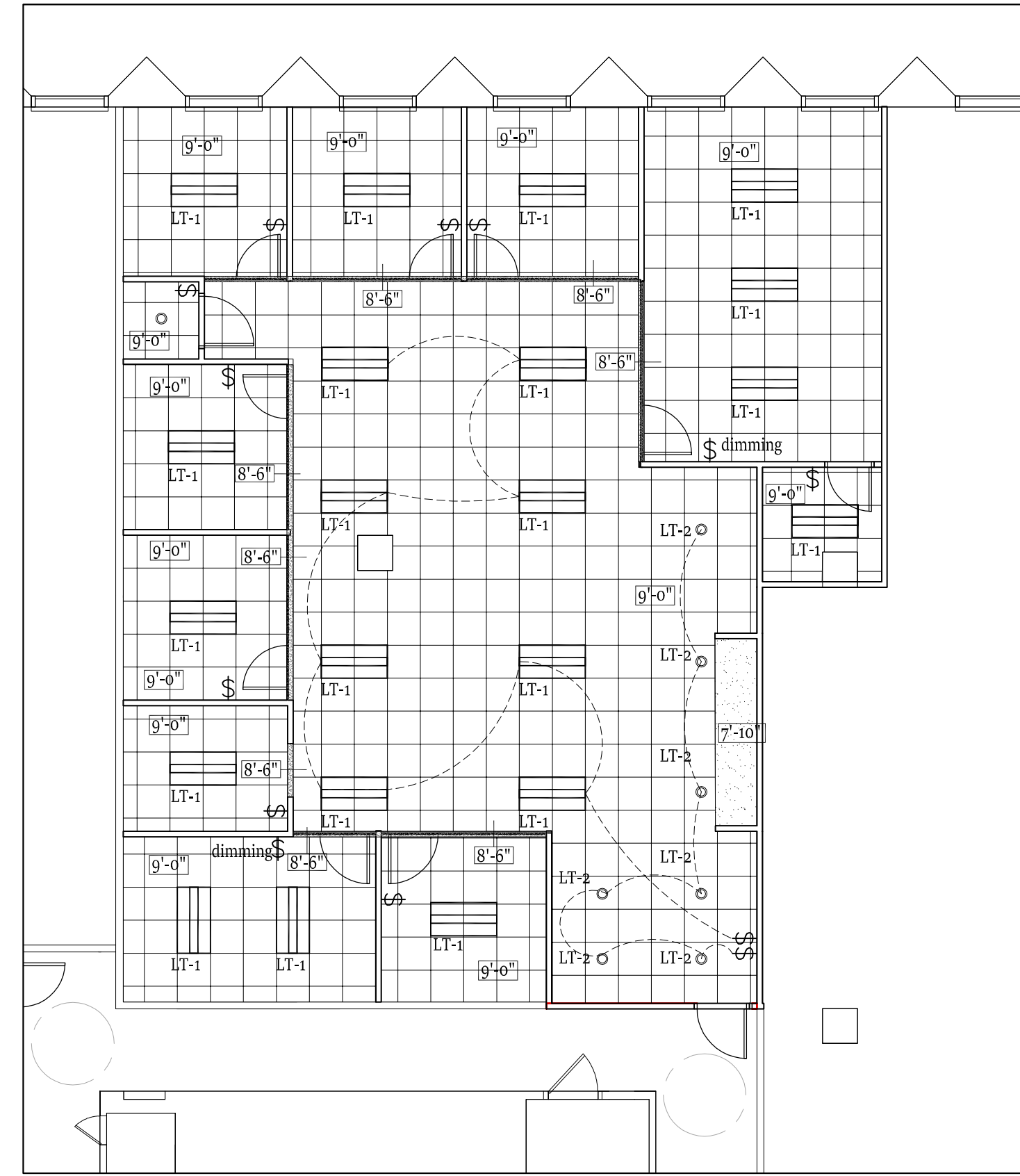
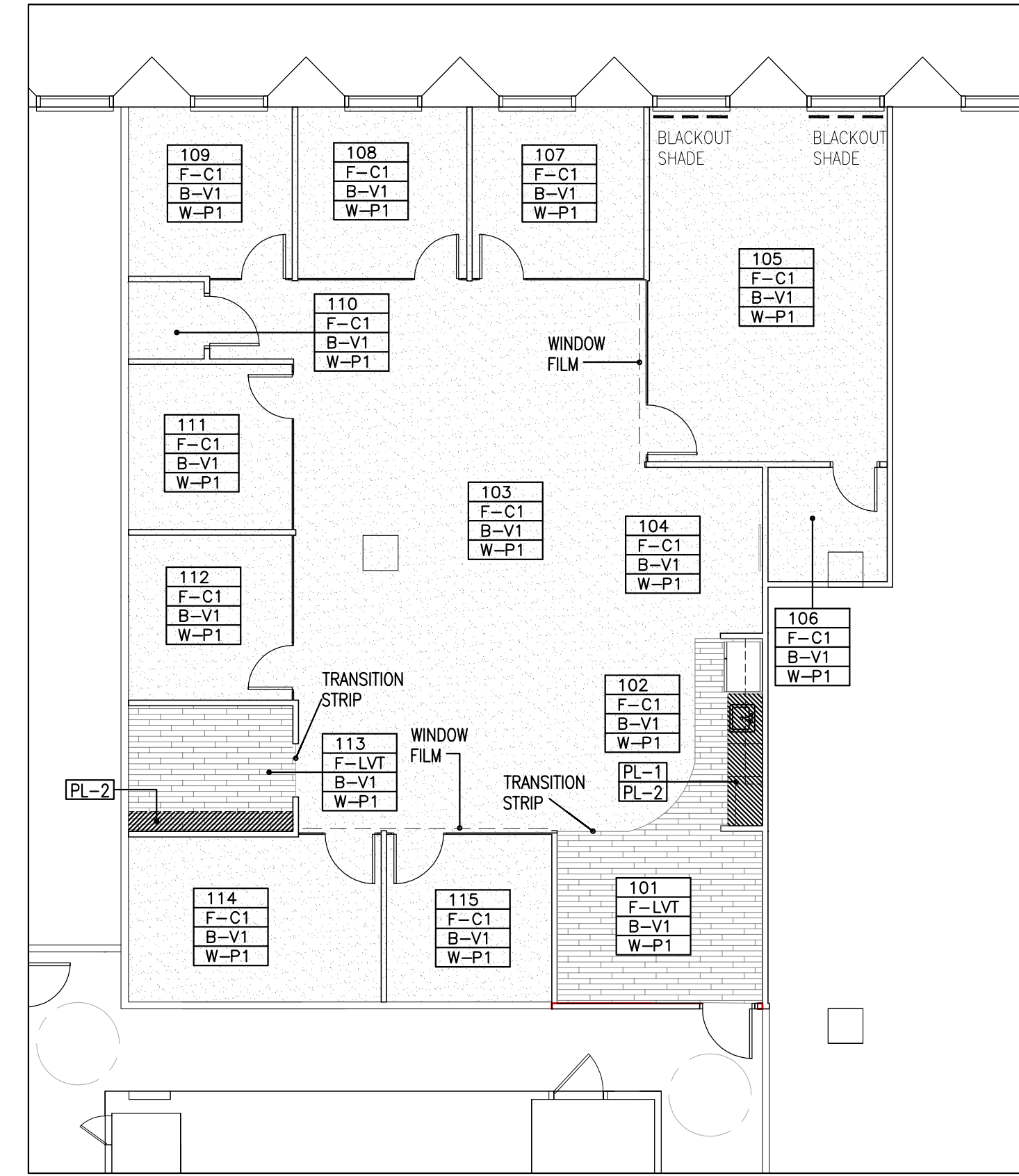


1 TEL/DATA LOCATION PLAN  
1/8" = 1'-0"



2 REFLECTED CEILING PLAN  
1/8" = 1'-0"



3 FINISH PLAN  
1/8" = 1'-0"

**ELECTRIC/TELEPHONE LEGEND:**

- ⊕ INDICATES COUNTER HEIGHT, COORDINATE WITH TENANT EQUIPMENT
- ⊕ INDICATES A GROUND FAULT CIRCUIT INTERRUPTER
- ⊕ WALL MOUNTED DUPLEX ELECTRICAL OUTLET MOUNT 18" AFF UNLESS OTHERWISE NOTED
- ⊕ WALL MOUNTED DEDICATED CIRCUIT ELECTRICAL OUTLET MOUNT 18" AFF UNLESS OTHERWISE NOTED
- ⊕ WALL MOUNTED QUADRAPLEX ELECTRICAL OUTLET MOUNT 18" AFF UNLESS OTHERWISE NOTED
- ⊕ WALL MOUNTED TELEPHONE/DATA LOCATION - THE G.C. SHALL PROVIDE SINGLE GANG BOX AND PLASTER RING WITH CONDUIT TO PLENUM AND PULL STRING FOR FUTURE CABLING.
- ⊕ FLUSH FLOOR CORE POWER (QUAD) AND COMMUNICATION LOCATION TO BE BUILDING STANDARD PONE THRU DEVICE. SEE PLAN FOR LOCATIONS AND ENGINEERING FOR SPECS. LOCATE W/ THE ARCHITECT, THE G.C. SHALL COORDINATE AND INSTALL TABLE MOUNT UNIT (SUPPLIED BY AV CONTRACTOR) INTO FURNITURE TABLES.
- ⊕ FLOOR MOUNTED FURNITURE INEED LOCATION FOR POWER AND TELECOMMUNICATION CABLING. SEE PLAN FOR LOCATIONS AND ENGINEERING FOR SPECS. THE G.C. SHALL COORDINATE WITH FURNITURE VENDOR FOR ALL REQUIREMENTS. SEE PLAN FOR REQUIRED WIREWOLD.

**ELECTRIC/TELEPHONE NOTES:**

1. THE INTENT OF THIS DRAWING IS TO SHOW LOCATIONS OF ELECTRICAL AND TELEPHONE/ DATA DEVICES ONLY. REFER TO SUBCONTRACTOR DOCUMENTS FOR WIRING/CIRCUITING OF ALL ELEMENTS. IT IS THE RESPONSIBILITY OF THE G.C. TO MAKE SURE ALL SUBS RECEIVE ALL DRAWINGS FOR PRICING AND COORDINATION.
2. PRIOR TO CORING THE SLAB FOR ELECTRIC AND DATA LOCATIONS, THE CONTRACTOR SHALL PROVIDE A COORDINATION DRAWING FOR THE ARCHITECT'S REVIEW. IT SHALL BE DONE USING LOCATIONS AS SHOWN ON THE PLAN, THE REQUIREMENTS OF THE SYSTEMS FURNITURE AND FREE STANDING DESKS, CLEARANCE OF EXISTING STRUCTURAL STEEL AND EXISTING OR NEW MECHANICAL, ELECTRICAL AND PLUMBING/FIRE PROTECTION CONSTRUCTION.
3. GENERAL CONTRACTOR SHALL COORDINATE WITH ALL VENDORS INCLUDING, BUT NOT LIMITED TO, TELEPHONE/DATA, AUDIO/VISUAL, MOVERS AND SECURITY CONTRACTORS.
4. SEE ENGINEERING FOR ALL LOCATIONS OF LIFE SAFETY RELATED EQUIPMENT SUCH AS PULL STATIONS, FIRE STROBES, ETC. RELOCATE WHERE NECESSARY DUE TO LAYOUT, BCD RESERVES THE RIGHT TO REVIEW AND MOVE PRIOR TO INSTALLATION AT NO ADDITIONAL COST TO THE TENANT. G.C. COORDINATE SITE MEETING FOR REVIEW.
5. ALL SWITCHING AND RECEPTACLES SHALL BE BUILDING STANDARD WHITE. THE G.C. TO SUBMIT SAMPLES TO ARCHITECT FOR APPROVAL.
6. GANG ALL MULTIPLE SWITCHES AT ONE LOCATION, TOGETHER WITH A COMMON FACE PLATE.
7. ALL WALL MOUNTED OUTLETS SHALL BE INSTALLED AT 18" A.F.F. UNLESS NOTED OTHERWISE.
8. ALL WALL MOUNTED OUTLETS SHOWN BACK-TO-BACK ON PLANS SHALL BE INSTALLED OFF-SET TO PREVENT SOUND TRANSMISSION.
9. ALL WALL MOUNTED SWITCHES SHALL BE INSTALLED AT 48" A.F.F. TO MEET ADA/AA8, UNLESS NOTED OTHERWISE.
10. THE G.C. SHALL OPEN PERIMETER G.W.B AS NEEDED AT NEW POWER OR TEL/DATA AND COORDINATE W/ DRYWALL SUB FOR PATCHING AS REQUIRED. THE ELECTRICIAN SHALL ALSO REMOVE ANY EXISTING LOCATIONS NOT SHOWN ON THIS PLAN AND THE DRYWALL SUB SHALL PATCH AS NEEDED - VERIFY IN FIELD.

**CEILING LEGEND:**

- ⊕ INDICATES NEW CEILING: ARMSTRONG ULTIMA LAY IN CEILING TILES, WHITE CLASS A FIRE RATING ARMSTRONG PRELUDE XL 15/16" Exposed Tee LAY-IN 1/2" GRID, WHITE
- DRYWALL SOFFIT
- LT-1 FINELITE, HIGH PERFORMANCE RECESSED 2x4 LED HPR-LED-A-2x4-DC0-S-835- VOLT-SC-CT
- LT-2 FINELITE 4" DOWN LIGHT- RECESSED LED HP- 4 Recessed (DOUBLE FACE CEILING - NO ARROW) The EU Series- Edgelit Exit
- ⊕ (SINGLE FACE CEILING - SINGLE ARROW) The EU Series- Edgelit Exit
- ⊕ WALL SWITCH LOCATION. PROVIDE SEPARATE SWITCH FOR EACH LIGHT FIXTURE TYPE WITH A GANG COVER PLATE. WHITE

**CEILING NOTES:**

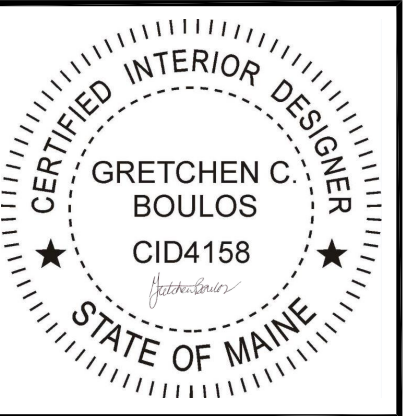
1. CEILING HEIGHTS TO BE BLDG STD. THE G.C. SHALL COORDINATE IN FIELD WITH BCD AND LASER LEVEL WITH NEW G.W.B SOFFIT/POCKET WINDOW CONDITIONS, UNLESS OTHERWISE NOTED. G.C. TO COORDINATE AND NOTIFY ARCHITECT FOR ANY CLEARANCE ISSUES FOR LIGHTING, HVAC, SPRINKLER, ETC. RELOCATE AS REQUIRED. SEE ENGINEERING AND VCA DOCUMENTS.
2. THE G.C. SHALL COORDINATE WITH ALL REQUIRED SUBS TO RELOCATE SYSTEM ABOVE CEILING AT ALL REQUIRED RAISED CEILING AREAS (IE - COVES, ETC) SHALL BE COORDINATED BY THE G.C. AND SHALL HAVE ALL HVAC, PIPING, ETC. MOVED AS NEEDED. COORDINATE THIS WORK WITH THE BUILDING RULES AND REGULATIONS.
3. ALL LIGHT FIXTURES AT CONFERENCE ROOMS TO BE ON DIMMING SYSTEM. ALL VARYING LIGHT FIXTURE TYPES SHALL BE SWITCHED SEPARATE, UNDER SINGLE COVER PLATE.
4. LEVEL CEILING TO WITHIN 1/8" IN 12 FEET IN ANY DIRECTION. LEVEL WITH HANGER WIRE TAUT AND PLUMB, WITHOUT KINKING OR BENDING HANGER WIRES. CEILING HEIGHT SHALL MATCH EXISTING BLDG STANDARD AND SHALL TIE INTO EXISTING PERIMETER METAL SOFFIT AS REQUIRED UNLESS OTHERWISE NOTED.
5. SPRINKLER CONTRACTOR SHALL MODIFY AND/OR RELOCATE SPRINKLER MAINS, BRANCHES AND HEADS TO COORDINATE WITH ARCHITECTURAL REFLECTED CEILING PLANS AND MECHANICAL AIR DISTRIBUTION PLANS TO PROVIDE COVERAGE PER TENANT SPECIFICATIONS. CENTER HEADS IN 2x2 TILE - TYP.
6. BCD SHALL APPROVE ALL LOCATIONS PRIOR TO INSTALLATION, FOR EXIT SIGN, STROBES, T-STATS AND SPRINKLER LOCATIONS. ALL SWITCHING, T-STATS AND STROBES SHALL ALIGN VERTICALLY AND SHALL BE INSTALLED LEVEL.
7. IT IS THE RESPONSIBILITY OF THE G.C. AND ALL RELATED SUBS TO MAKE SURE ALL LIGHT FIXTURES ARE ORDERED WITH THE PROPER TRIMS PER THE REQUIRED CEILING TYPE.
8. WHERE APPLICABLE, IN MEETING ROOMS AND CONFERENCE ROOMS, ALIGN HORN AND STROBE (FIRE PROTECTION DEVICES) WITH LIGHT SWITCH, SO THAT FIRE PROTECTION DEVICES ARE NOT LOCATED IN THE MIDDLE OF THE WALL. CONFIRM LOCATIONS OF SUCH DEVICES WITH ARCHITECT PRIOR TO INSTALLATION.

**FINISH LEGEND:**

- |      |              |  |  |
|------|--------------|--|--|
| 1114 | ROOM NO.     |  |  |
| F-C1 | FLOOR FINISH |  |  |
| B-V1 | BASE MATL    |  |  |
| W-P1 | WALL FINISH  |  |  |
- FLOORING FINISHES**
- |     |                    |                |                    |
|-----|--------------------|----------------|--------------------|
| C1  | CARPET             | COMPANY:       | TANDUS CENTIVA     |
|     |                    | STYLE/PATTERN: | TBD                |
|     |                    | COLOR:         | TBD                |
|     |                    | REMARKS:       | ASTM E84           |
| LVT | LUXURY VINYL PLANK | COMPANY:       | ARMSTRONG FLOORING |
|     |                    | STYLE/PATTERN: | TBD                |
|     |                    | COLOR:         | TBD                |
|     |                    | REMARKS:       | ASTM E84           |
- WALL FINISHES**
- |    |       |          |                |
|----|-------|----------|----------------|
| P1 | PAINT | COMPANY: | BENJAMIN MOORE |
|    |       | COLOR:   | TBD            |
|    |       | FINISH:  | EGG-SHELL      |
|    |       | REMARKS: | TBD            |
| P2 | PAINT | COMPANY: | BENJAMIN MOORE |
|    |       | COLOR:   | TBD            |
|    |       | FINISH:  | EGG-SHELL      |
|    |       | REMARKS: | TBD            |
- BASE FINISHES**
- |    |              |          |                |
|----|--------------|----------|----------------|
| V1 | VINYL BASE 1 | COMPANY: | BENJAMIN MOORE |
|    |              | COLOR:   | TBD            |
|    |              | REMARKS: | ASTM E84       |
- MILLWORK FINISHES**
- |     |                  |                |          |
|-----|------------------|----------------|----------|
| PL1 | PLASTIC LAMINATE | COMPANY:       | LAMINART |
|     |                  | PATTERN/STYLE: | TBD      |
|     |                  | COLOR:         | TBD      |
|     |                  | REMARKS:       |          |
| PL2 | PLASTIC LAMINATE | COMPANY:       | LAMINATE |
|     |                  | PATTERN/STYLE: | TBD      |
|     |                  | COLOR:         | TBD      |
|     |                  | REMARKS:       |          |
- WINDOW SHADES**
- |               |       |                            |
|---------------|-------|----------------------------|
| ROLLER SHADES | ----- | MANUAL BLACKOUT SHADE      |
|               |       | ROLLER SHADE               |
|               |       | MECHO-SHADE BRAND OR EQUAL |

**FINISH NOTES:**

1. ALL FLOORING AND CEILING MATERIALS MUST MEET NFPA 255 / ASTM E84 WHEN REQUIRED.
2. WALL SURFACES BEING PREPARED FOR PAINT SHALL HAVE PAINT APPLIED IN ACCORDANCE WITH MANUFACTURER'S SPECIFICATIONS. PROVIDE A MINIMUM OF (2) FINISH COATS OVER PRIME AS REQUIRED.
3. PAINT ALL DRYWALL CEILINGS AND BOTTOMS OF SOFFITS WITH (2) COATS OF FLAT PAINT.
4. IF REQUIRED, CONTRACTOR TO PROVIDE ALL TEST DATA FOR MATERIALS SPECIFIED TO THE CITY BUILDING DEPARTMENT.
5. WHERE CARPETING OCCURS IN DOORWAYS; INSTALLER TO LOCATE SEAM UNDER THE CENTER OF THE DOOR (ALIGNMENT OF PATTERN IS CRITICAL).
6. CLOSETS ARE TO RECEIVE SAME FINISHES AS SPECIFIED FOR THE ROOM ONTO WHICH THEY OPEN, U.O.N.
7. PROVIDE RUBBER REDUCER STRIPS AT FLOOR MATERIAL JUNCTIONS, COLOR TO BE APPROVED BY THE ARCHITECT.
8. THE G.C. AND THE CARPET SUB-CONTRACTOR SHALL SUBMIT PRIOR TO PURCHASE AND ORDER OF CARPET GOODS A SEAMING DIAGRAM FOR REVIEW AND APPROVAL. ALL ABUTTING PATTERNED REPEAT CARPET SHALL RUN IN SAME DIRECTION.
9. ANY CARPET INSTALLED PRIOR TO OTHER TRADES BEING COMPLETE SHALL PROVIDE ADEQUATE PROTECTION FOR INSTALLED GOODS. THE SUB SHALL HAVE THE EDGES TRIMMED AND SEALED ACCORDING TO THE MANUFACTURER'S SPECIFICATIONS. ANY EDGES NOT SEALED THAT RAVEL WILL BE REPAIRED/REPLACED AT THE SUB-CONTRACTORS EXPENSE.
10. G.C. TO SUBMIT SAMPLES OF ALL FINISHES TO ARCHITECT FOR APPROVAL.
11. G.C. SHALL COORDINATE SANDING AND REPAINTING ALL PERIMETER DRYWALL SILL, SKIM COAT AND REPAIR AS (GENERAL WALL COLOR) U.O.N.
12. G.C. SHALL COORDINATE WITH FLOORING SUB ALL REQUIRED FLOOR PREP FOR ALL MATERIALS AND INCLUDE IN PROJECT COST.



PROJECT  
PENOBSCOT FINANCIAL ADVISORS  
1 MONUMENT SQ. FLOOR 5  
PORTLAND, ME 04101

REVISION NO.	DATE

TITLE	TEL DATA LOCATION PLAN REFLECTED CEILING PLAN FINISH PLAN
SCALE	AS NOTED
DATE	01-11-2018
PROJECT NO.	2017.009
DRWN	CHK

DRAWING NO.  
**A3**