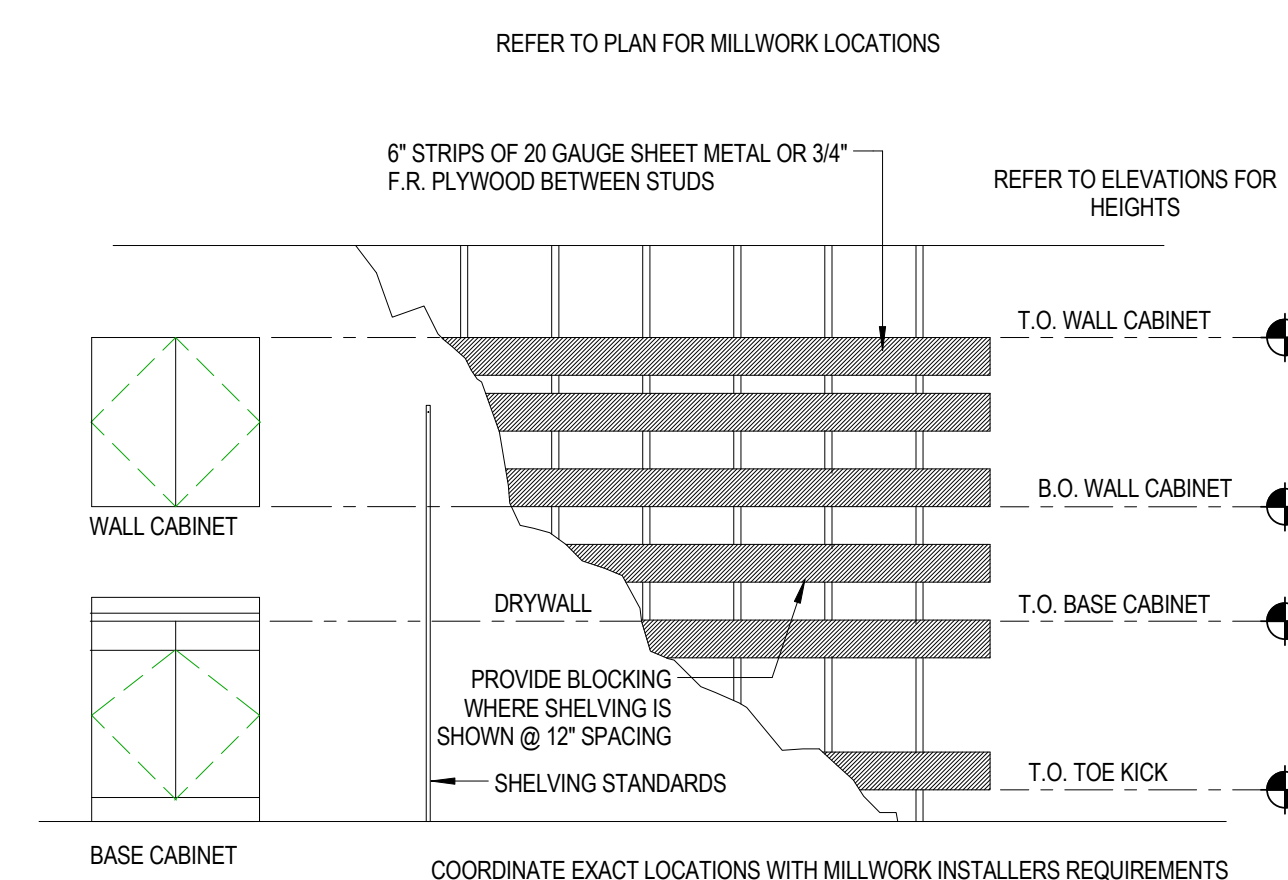
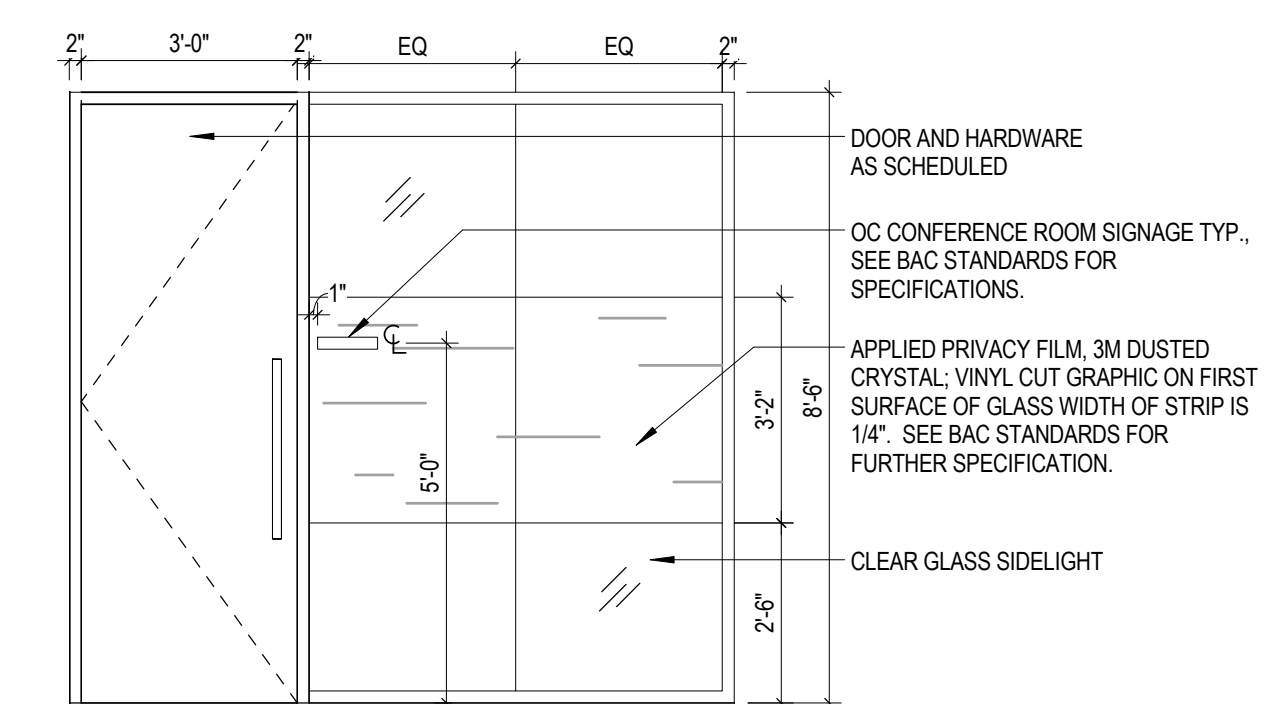


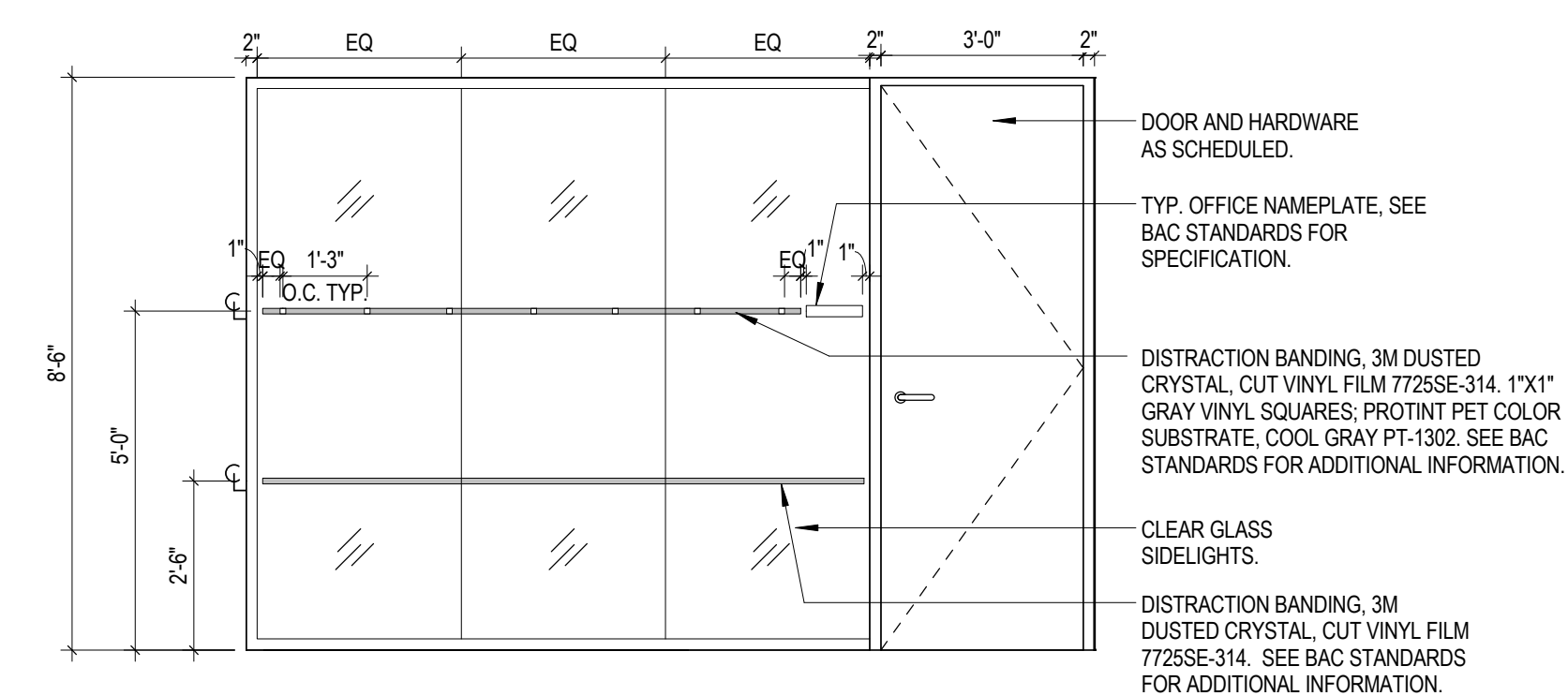
4 MERRILL LYNCH ENTRANCE - FROSTED GLASS
3/8" = 1'-0"



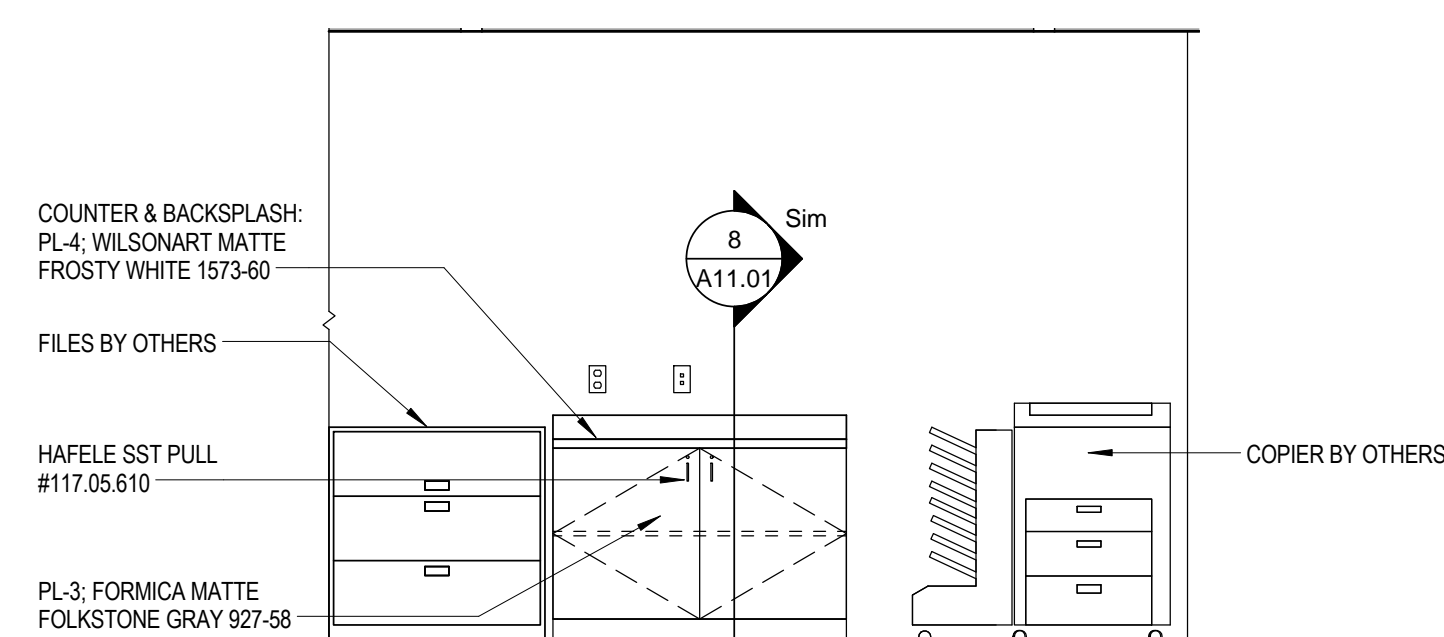
7 BLOCKING DETAIL AT MILLWORK & SHELVING
3" = 1'-0"



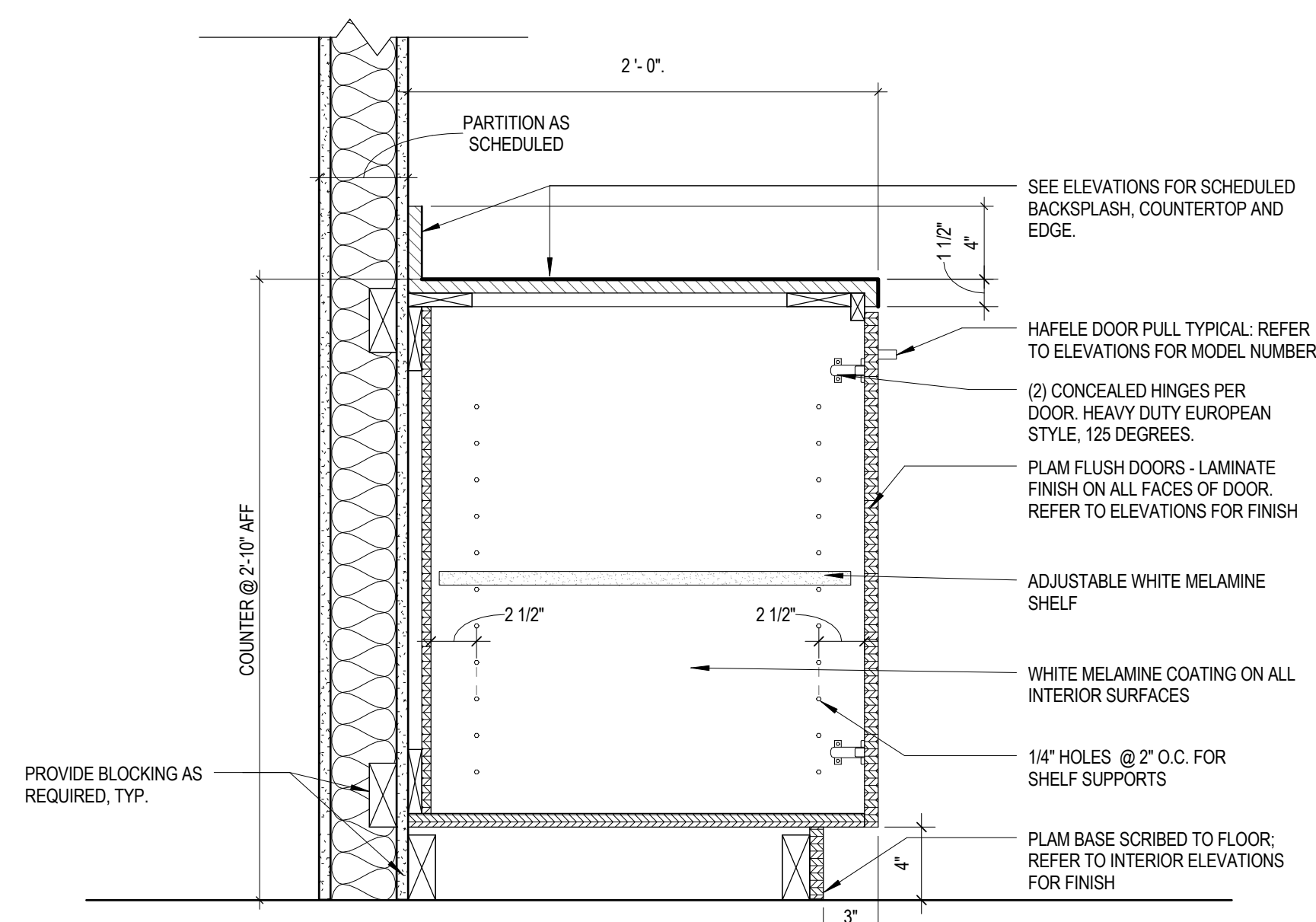
3 HOME LOANS APPLICATION ROOM FRONT
3/8" = 1'-0"



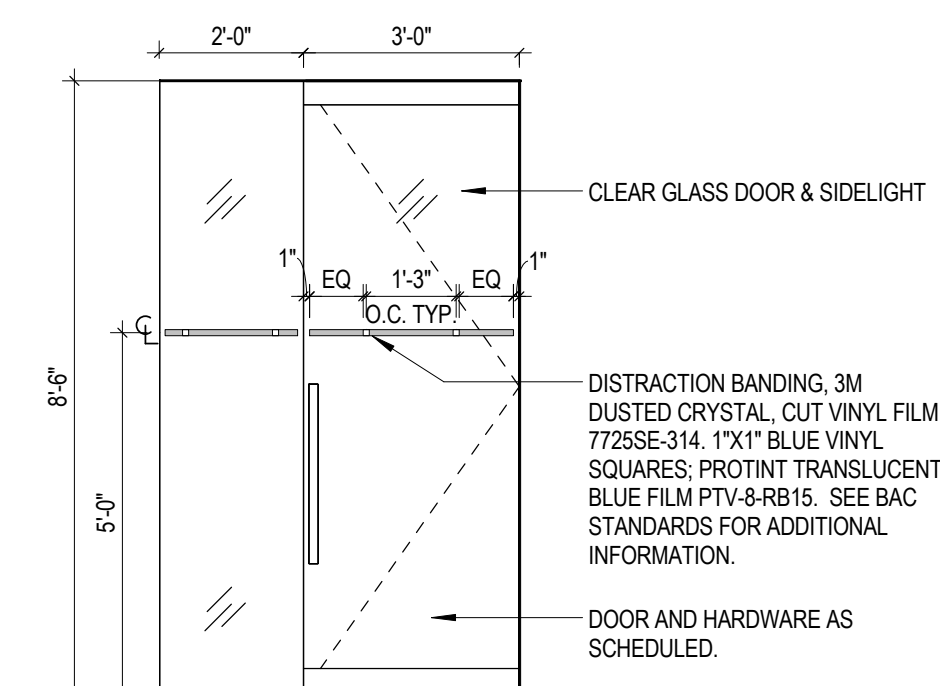
2 HOME LOANS TYP. OFFICE FRONT
3/8" = 1'-0"



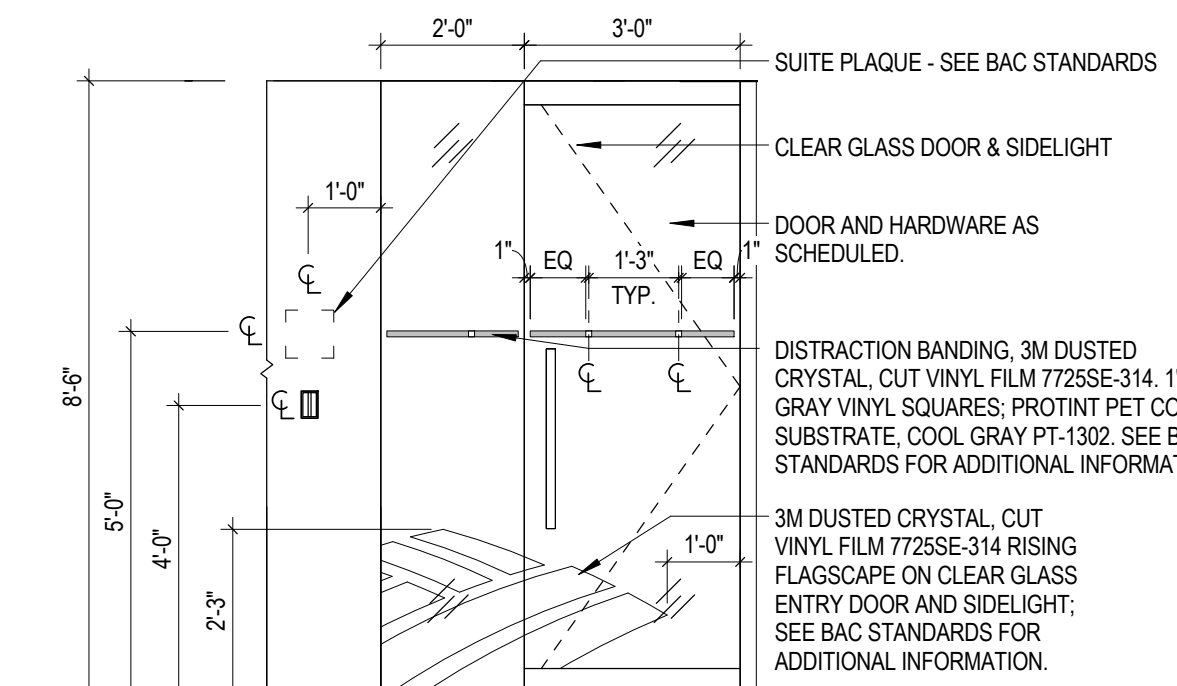
6 COPY/PRINT ELEVATION
3/8" = 1'-0"



8 BASE CABINET WITH FLUSH DOOR
1 1/2" = 1'-0"



5 MERRILL LYNCH ENTRANCE - CLEAR GLASS
3/8" = 1'-0"



1 HOME LOANS ENTRANCE
3/8" = 1'-0"



REVISIONS

CONSTRUCTION DOCUMENTS

BANK OF AMERICA - HOME LOANS

BANK OF AMERICA
1 MONUMENT SQUARE, PORTLAND ME

TITLE
ELEVATIONS/DETAILS

DATE JOB NO.
06/29/17 17.0239

DRAWING NO.

A11.01

ISSUED FOR CONSTRUCTION