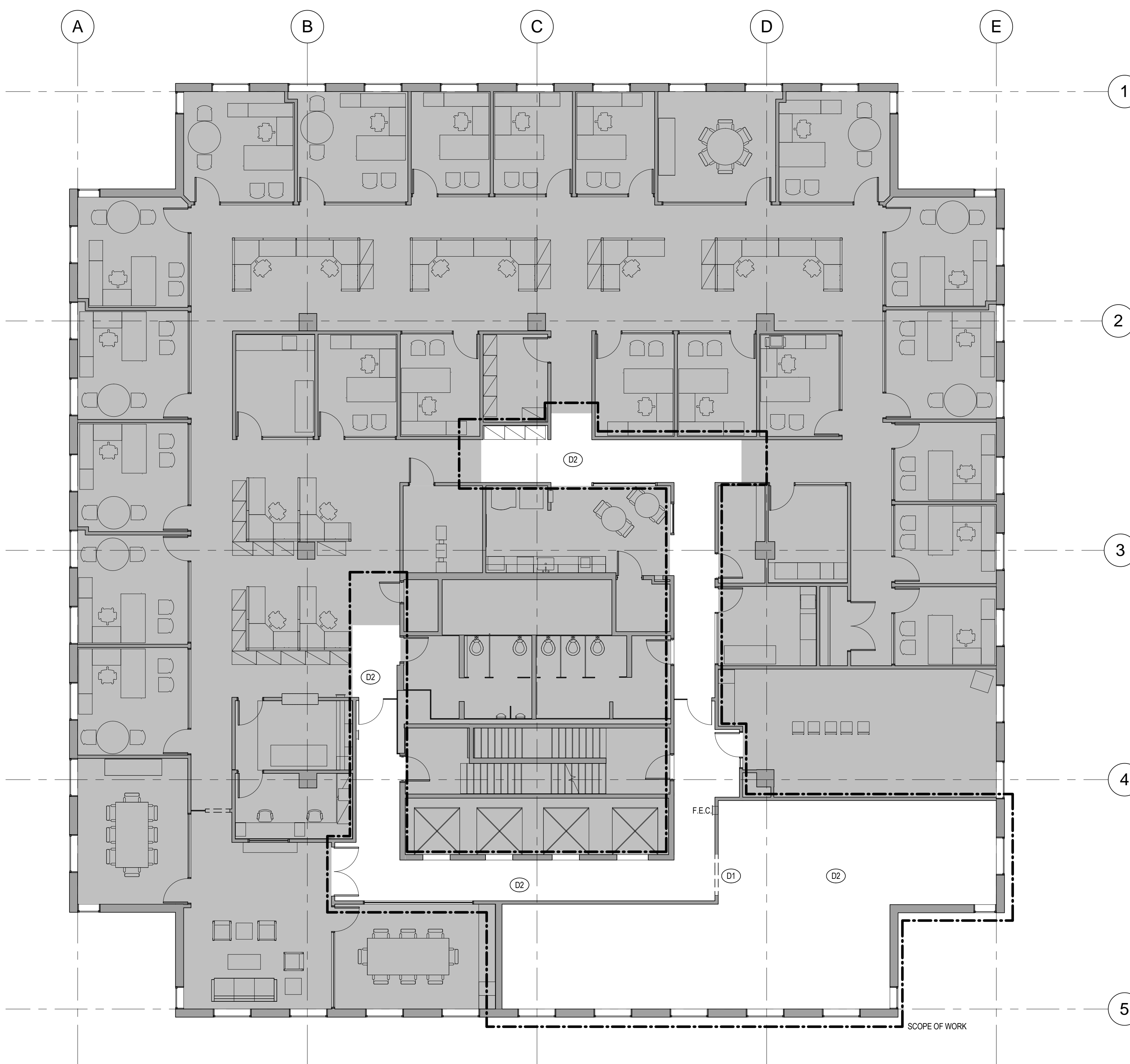


- DEMOLITION NOTES**
- DEMOLITION NOTES BELOW APPLY TO THE ENTIRE PLAN AREA SHOWN WITHIN THE SCOPE OF WORK LINE.
  - COORDINATE DEMOLITION WITH NEW WORK. G.C. TO REVIEW CONSTRUCTION DOCUMENTS WITH EXISTING CONDITIONS AND NOTIFY ARCHITECT IMMEDIATELY OF ANY CONFLICTS.
  - CONTRACTOR TO MAINTAIN SECURITY OF ALL SPACES DURING TO DEMOLITION AND THROUGHOUT CONSTRUCTION.
  - EXISTING APPLIED FLOORING, TILES, BASE, CARPETING, ACT GRID, AND LIGHT FIXTURES, ETC, TO REMAIN UNLESS NOTED OTHERWISE.
  - EXISTING DOORS TO REMAIN UNLESS NOTED OTHERWISE.
  - THRESHOLDS TO REMAIN UNLESS NOTED OTHERWISE.
  - WINDOW TREATMENTS AND HARDWARE TO REMAIN. CONFIRM EXISTING TREATMENTS MATCH ADJACENT SUITE CONDITIONS. ADVISE ARCHITECT OF ANY CONFLICTS.
  - SALVAGE ALL FIRE EXTINGUISHERS AND CABINETS FOR POSSIBLE REUSE.
  - PROTECT EXISTING RADIATOR COVERS TO REMAIN.
  - FIRE ALARM SYSTEM SHALL REMAIN IN OPERATION DURING CONSTRUCTION.
  - EXISTING ELECTRICAL PANELS TO REMAIN.
  - COORDINATE REMOVAL AND OR RELOCATION OF FIRE ALARM EQUIPMENT WITH ARCHITECT AND ENGINEER.
  - IF CIRCUIT IS IN DEMOLITION SCOPE, REMOVE WIRING BACK TO PANEL.
  - REFER TO A04.01 FOR RCP NOTES AND SCOPE.

**DEMOLITION PLAN KEYNOTES**

NOTE	DESCRIPTION
D1	REMOVE EXISTING ENTRY DOOR, SIDELIGHT, AND PARTIAL WALL AS REQUIRED TO ACCOMMODATE NEW GLASS DOOR/SIDELIGHT. COORDINATE WITH INSTALLATION OF NEW ENTRY DOOR TO MAINTAIN SECURITY.
D2	ALL EXISTING FINISHES TO REMAIN.



1 10TH FLOOR DEMOLITION PLAN  
 1/8" = 1'-0"



**REVISIONS**

**CONSTRUCTION DOCUMENTS**

**BANK OF AMERICA - HOME LOANS**

BANK OF AMERICA  
 1 MONUMENT SQUARE, PORTLAND ME

**TITLE**  
 10TH FLOOR DEMOLITION PLAN

**DATE** 06/29/17 **JOB NO.** 17.0239

**DRAWING NO.** **A01.00**

ISSUED FOR CONSTRUCTION