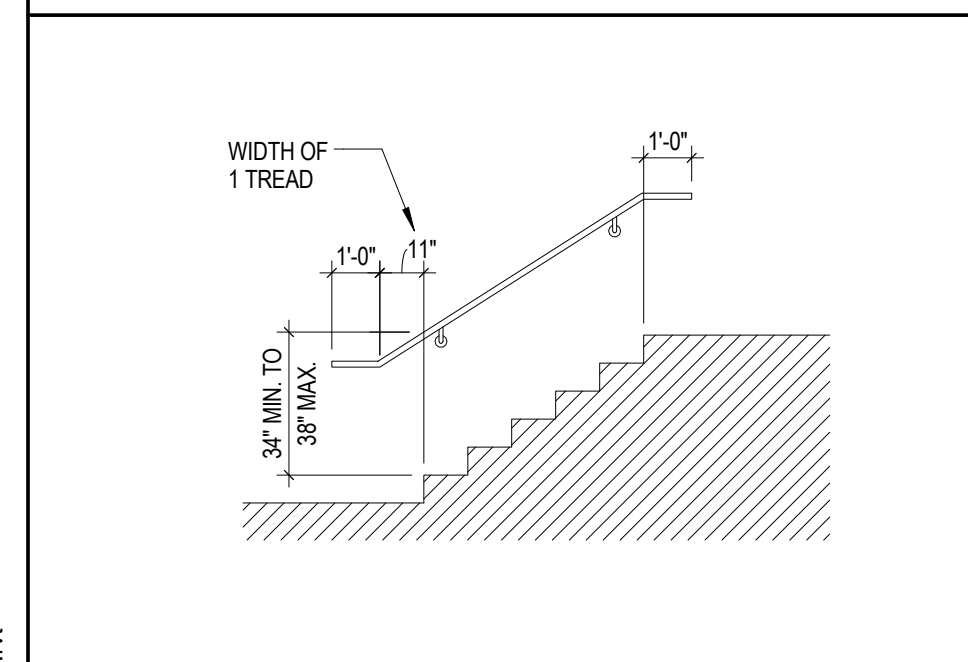
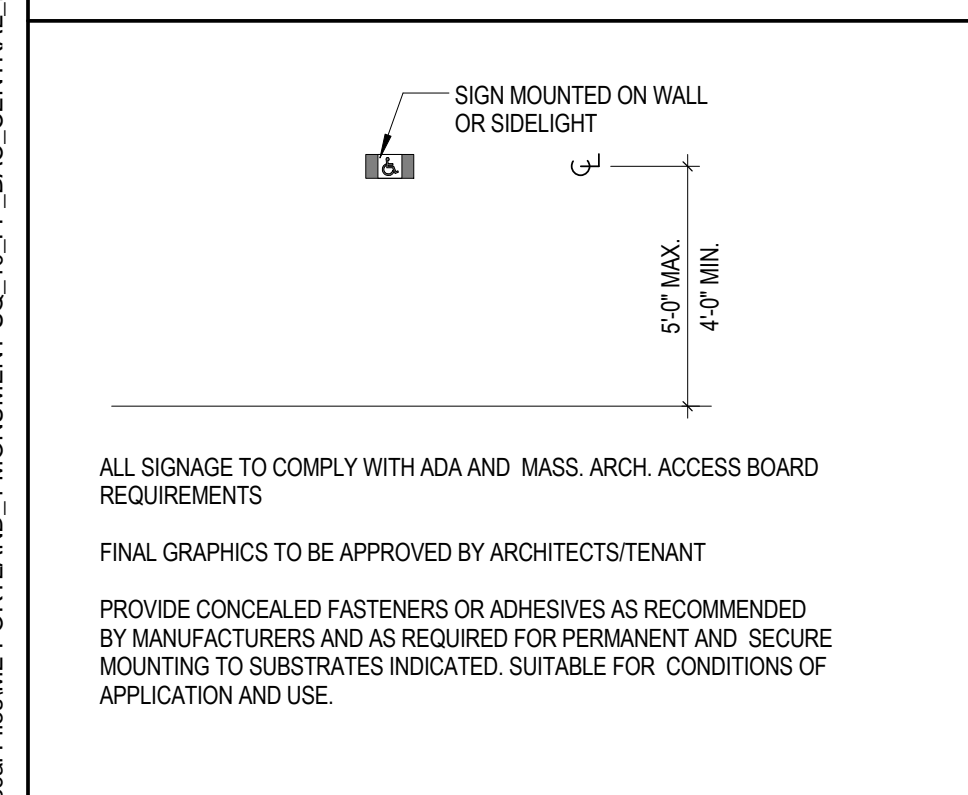


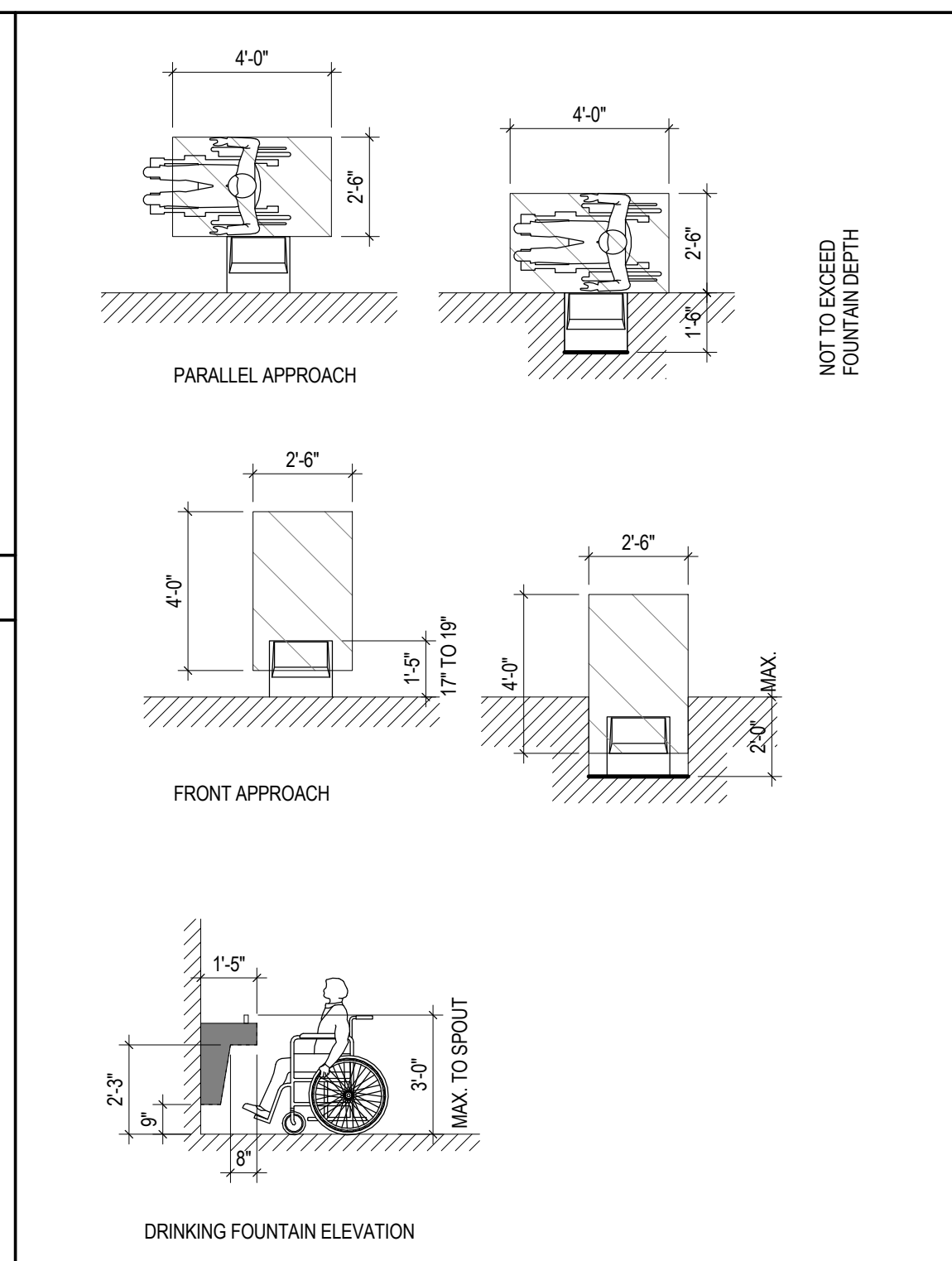
**13 RAMP / HANDRAILS**



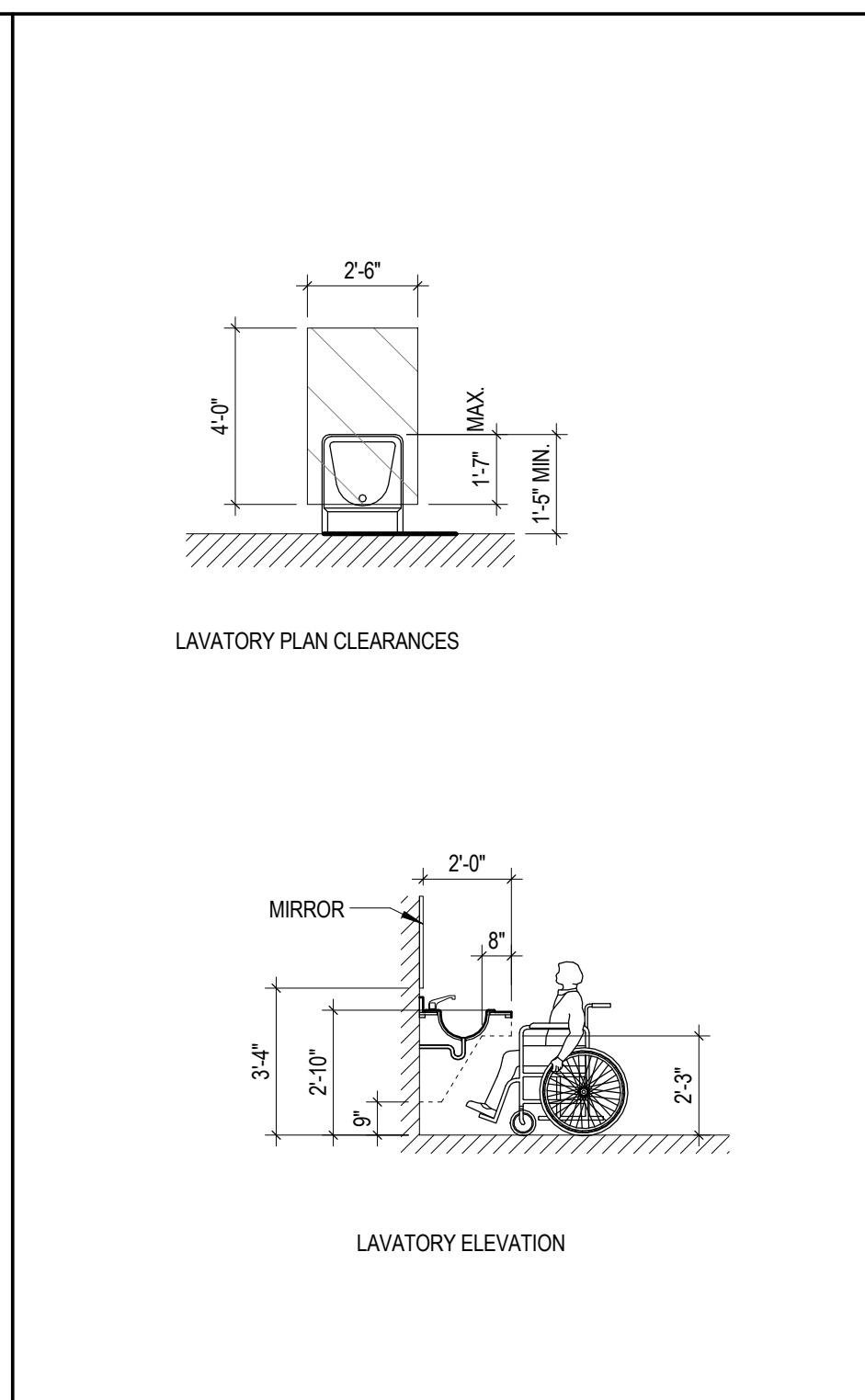
**12 STAIR RAILING DETAIL**



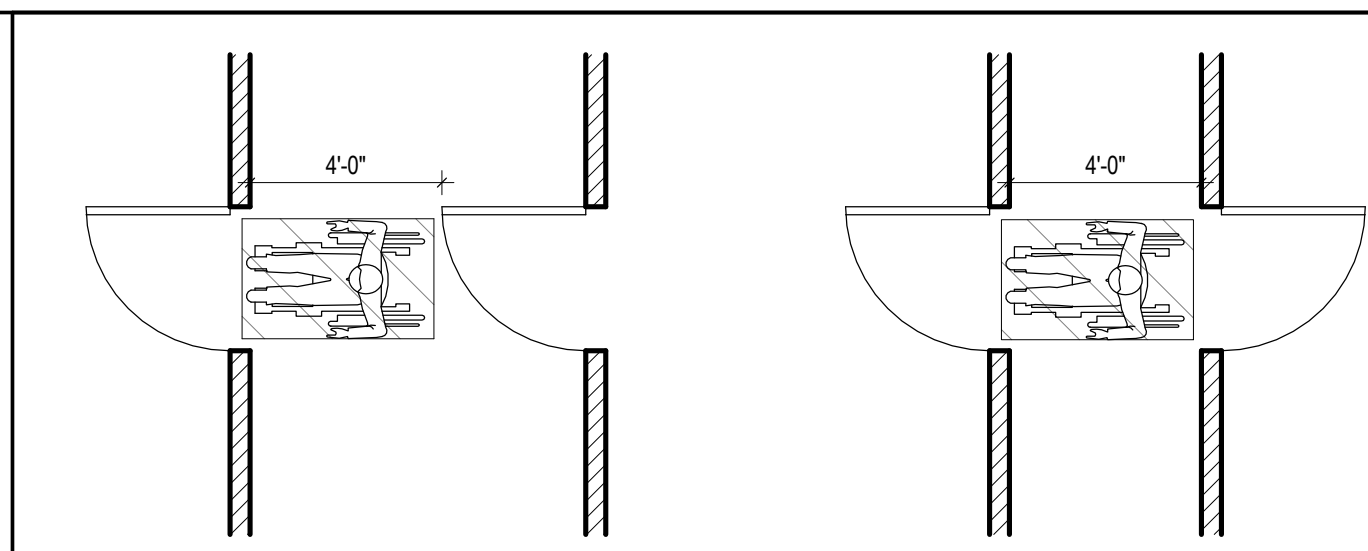
**11 INTERIOR TENANT SPACE SIGNAGE**



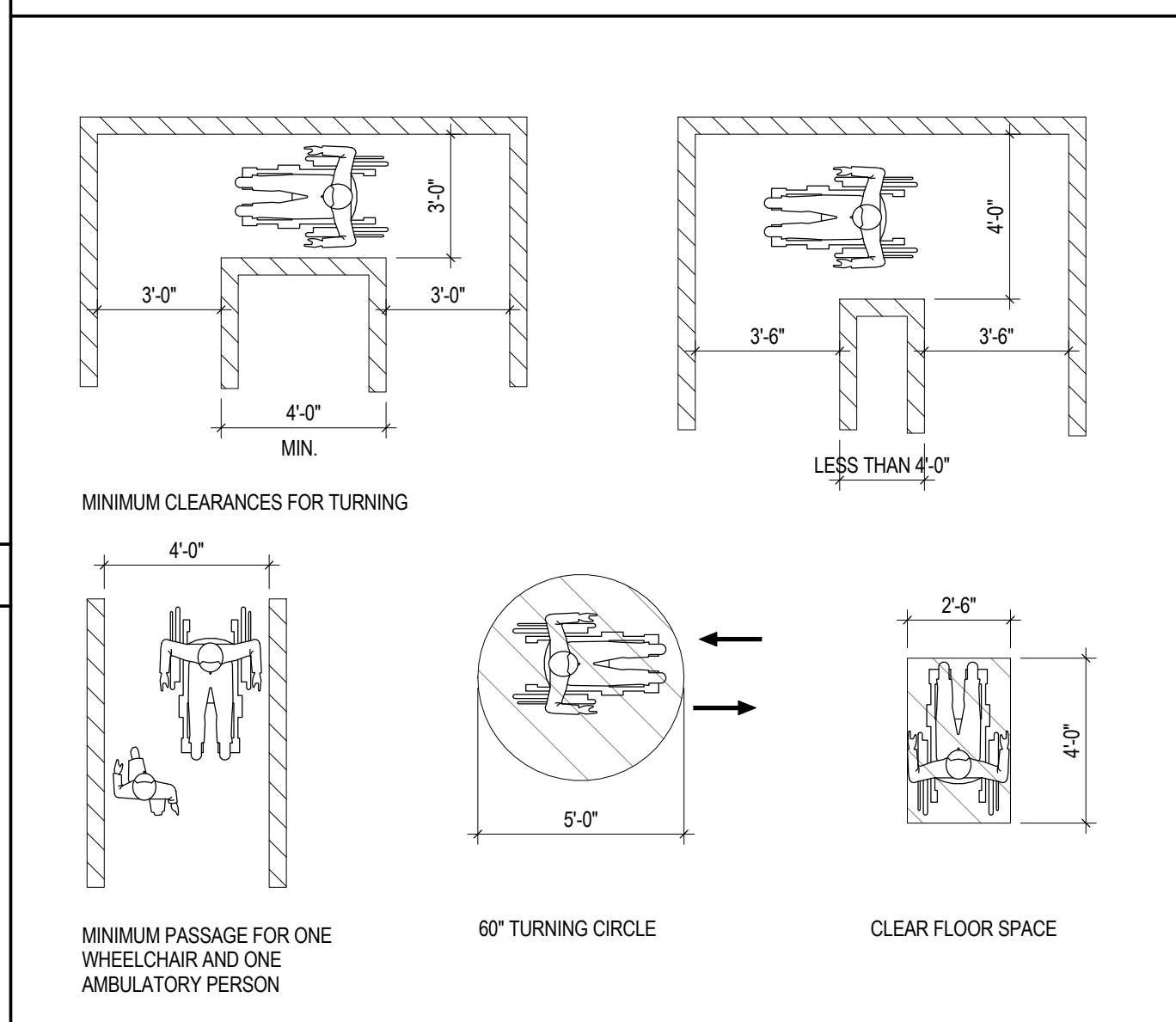
**9 DRINKING FOUNTAINS**



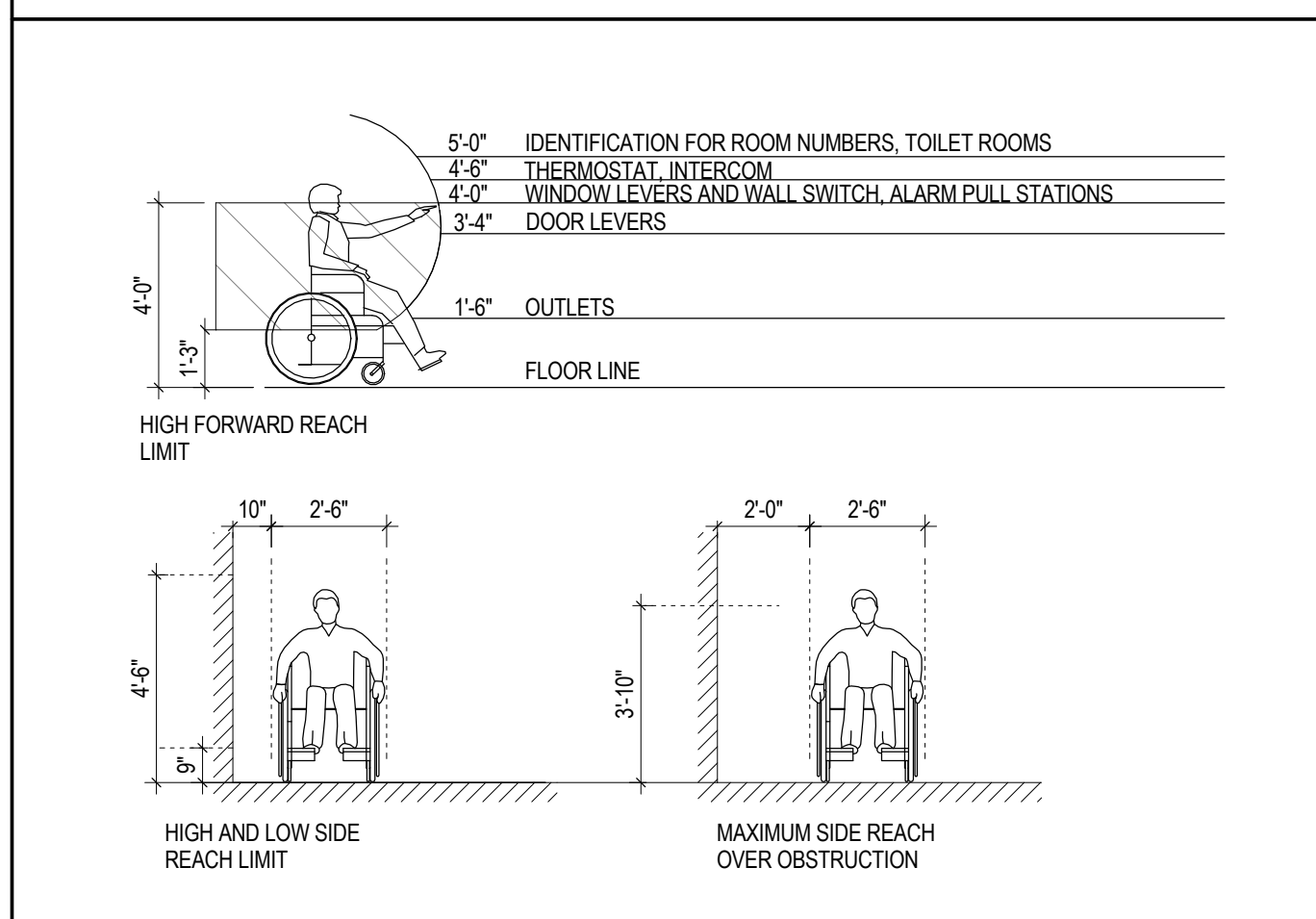
**8 LAVATORIES**



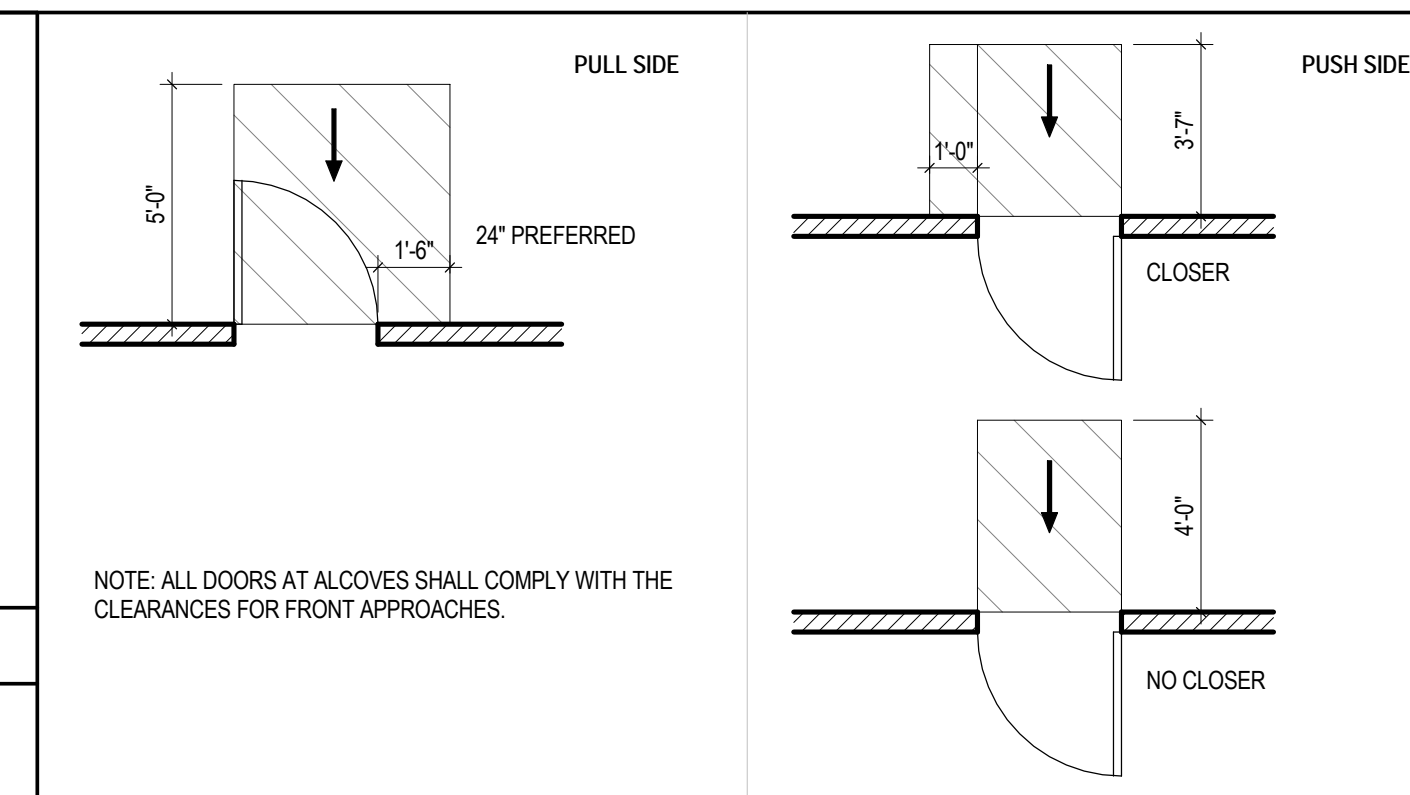
**6 TWO HINGED DOORS IN SERIES**



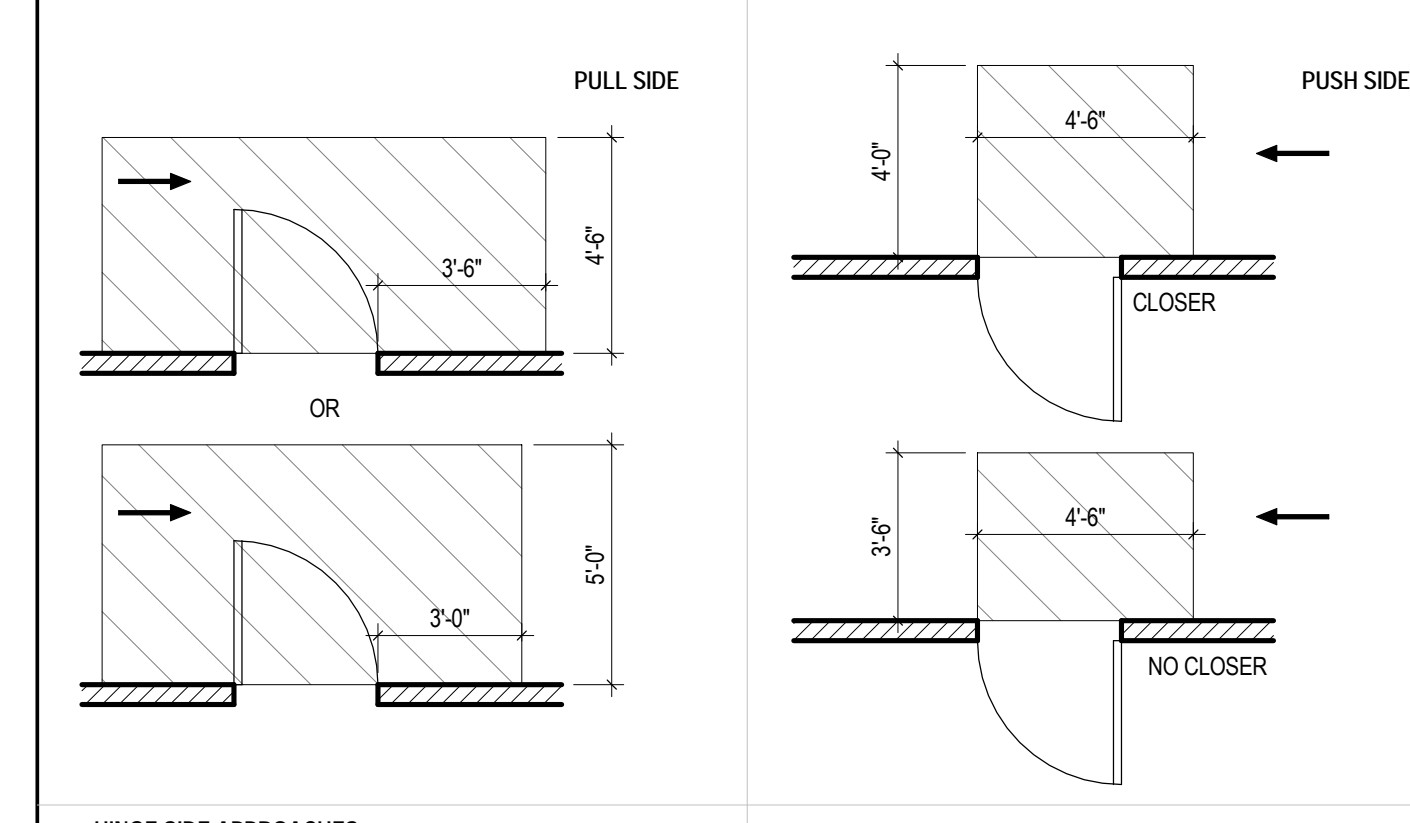
**5 ACCESSIBLE ROUTES**



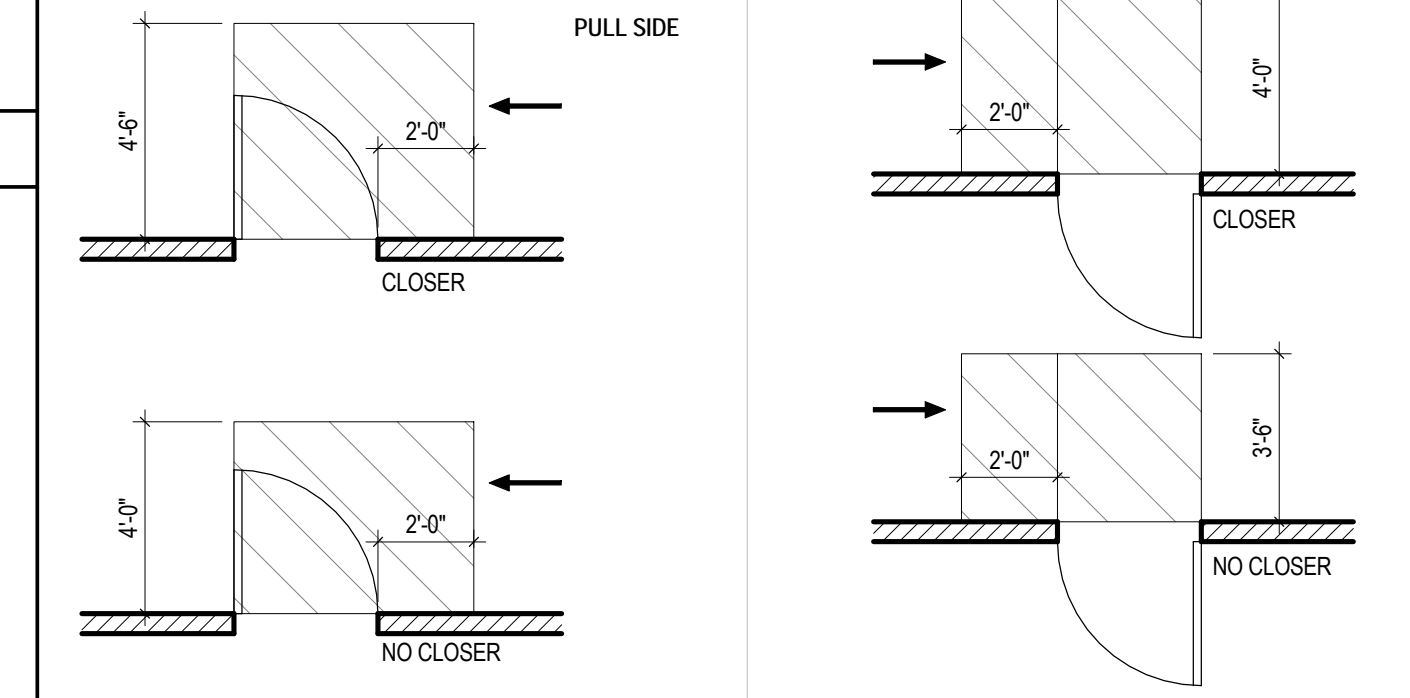
**4 REACH RANGES**



**FRONT APPROACHES**

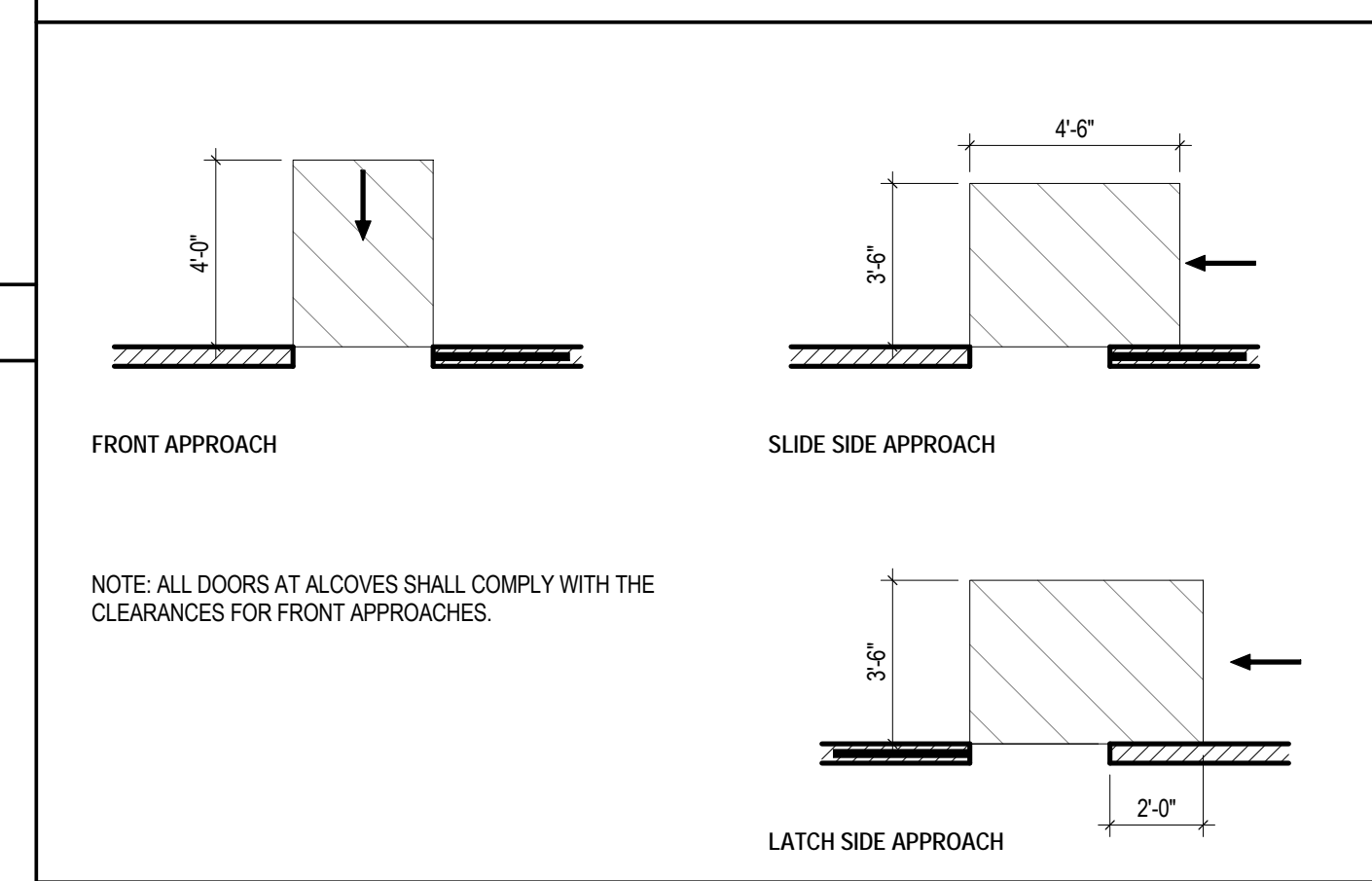


**HINGE SIDE APPROACHES**

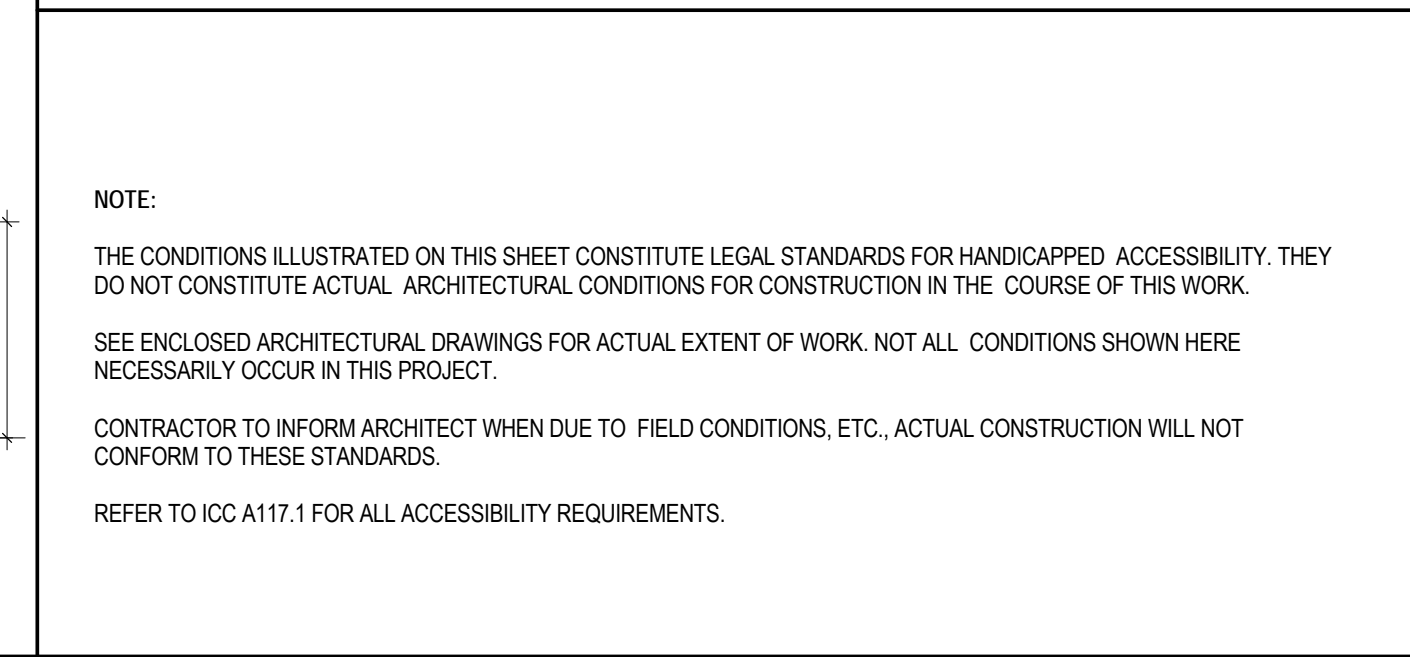


**LATCH SIDE APPROACHES**

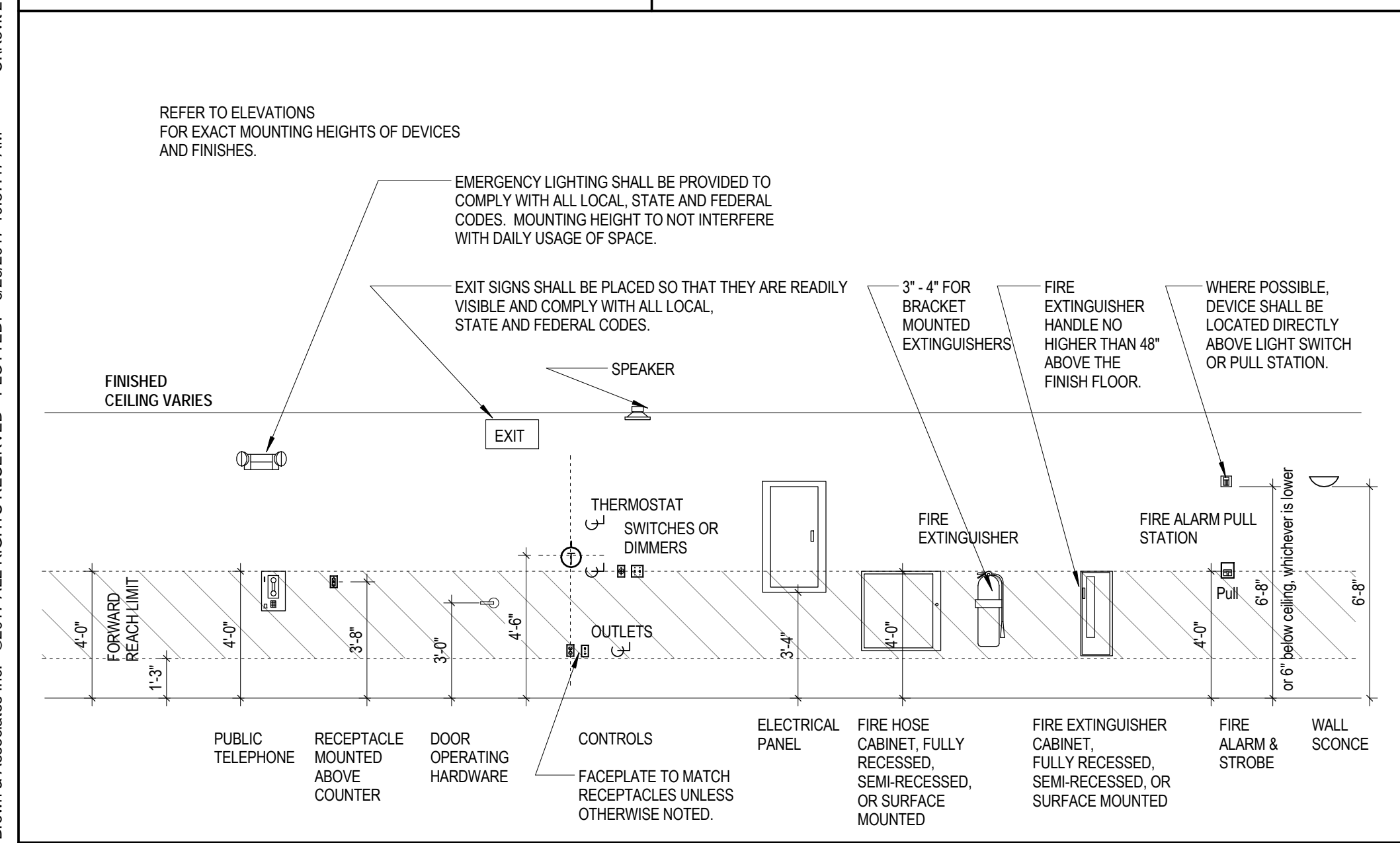
**3 MANEUVERING CLEARANCES AT SWINGING DOORS**



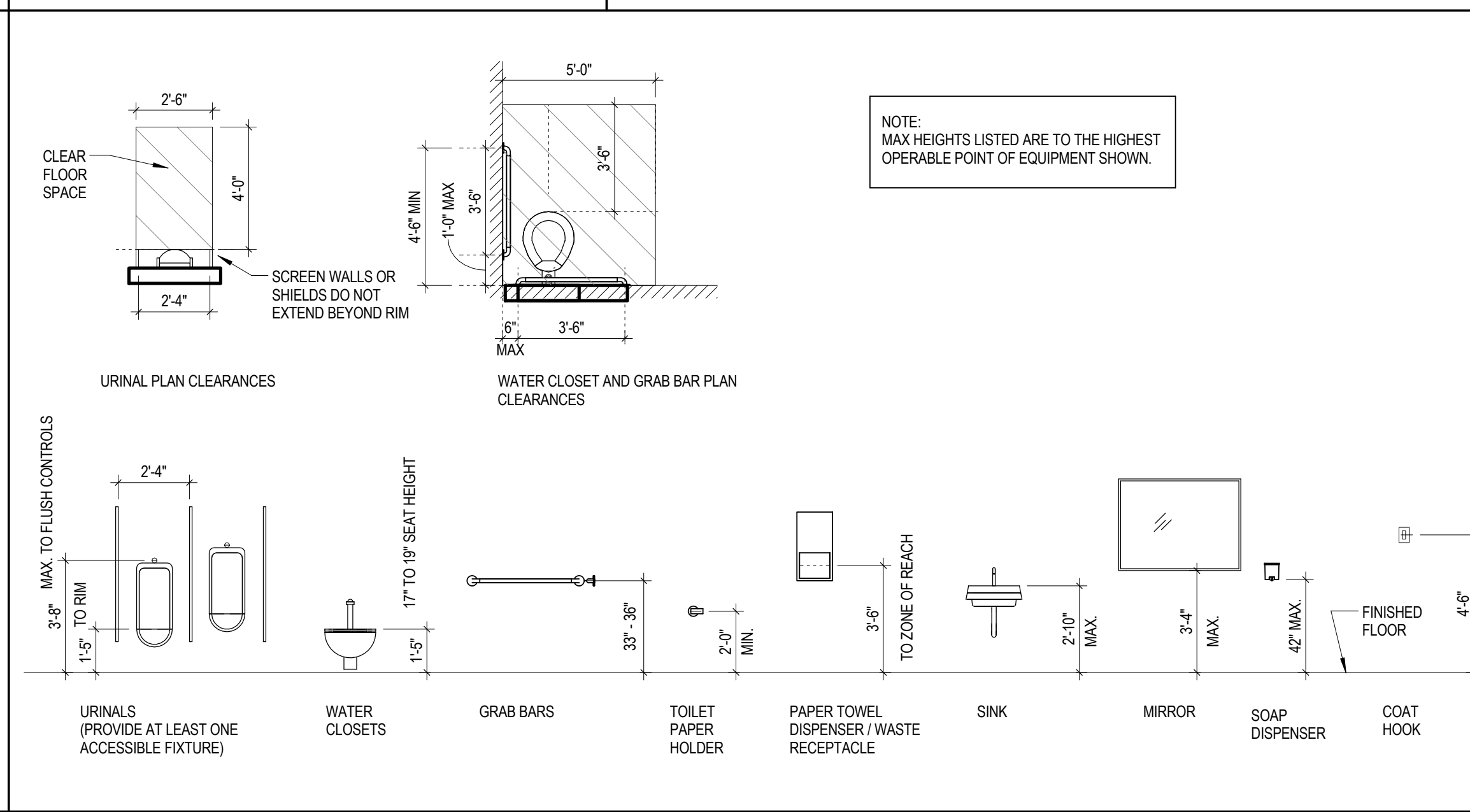
**2 MANEUVERING CLEAR. AT SLIDING / FOLDING DOORS**



**1 GENERAL NOTES**



**10 MOUNTING HEIGHTS**



**7 FIXTURE AND ACCESSORY MOUNTING HEIGHTS**

**REVISIONS**

**CONSTRUCTION DOCUMENTS**

**BANK OF AMERICA - HOME LOANS**

BANK OF AMERICA  
11 MONUMENT SQUARE, PORTLAND ME

**TITLE**  
ACCESSIBILITY REQUIREMENTS

**DATE** 06/29/17 **JOB NO.** 17.0239

**DRAWING NO.** **A00.06**

ISSUED FOR CONSTRUCTION