

DOOR SCHEDULE												
NO.	TYPE	MAT.	FIN.	WIDTH	HEIGHT	THICK.	FRAME TYPE	MAT.	FIN.	HWWR.	FIRE RATING	NOTES
201	3	WD-SC	NAT	3'-0"	7'-0"	1 3/4"	A	HM	PT	HW-1	--	--
202	EXISTING	--	--	--	--	--	--	--	--	--	--	6
203	--	--	--	--	--	--	C	WD	NAT	--	--	8
204	1	WD-SC	NAT	3'-0"	7'-0"	1 3/4"	A	HM	PT	HW-1	--	--
205	1	WD-SC	NAT	3'-0"	7'-0"	1 3/4"	A	HM	PT	HW-1	--	--
206	3	WD-SC	NAT	3'-0"	7'-0"	1 3/4"	B	WD	NAT	HW-1	--	5
207	3	WD-SC	NAT	3'-0"	7'-0"	1 3/4"	A	HM	PT	HW-1	--	--
208	3	WD-SC	NAT	3'-0"	7'-0"	1 3/4"	A	HM	PT	HW-1	--	--
209	3	WD-SC	NAT	3'-0"	7'-0"	1 3/4"	A	HM	PT	HW-1	--	--
210	3	WD-SC	NAT	3'-0"	7'-0"	1 3/4"	A	HM	PT	HW-1	--	--
211	3	WD-SC	NAT	3'-0"	7'-0"	1 3/4"	A	HM	PT	HW-1	--	--
212	3	WD-SC	NAT	3'-0"	7'-0"	1 3/4"	--	--	PT	--	--	7
213	3	WD-SC	NAT	3'-0"	7'-0"	1 3/4"	A	HM	PT	HW-1	--	--
214	3	WD-SC	NAT	3'-0"	7'-0"	1 3/4"	A	HM	PT	HW-1	--	--
215	1	WD-SC	NAT	3'-0"	7'-0"	1 3/4"	--	--	PT	--	--	7
216	2	WD-SC	NAT	3'-0"	7'-0"	1 3/4"	--	--	PT	--	1 HR	7
217	3	WD-SC	NAT	3'-0"	7'-0"	1 3/4"	A	HM	PT	HW-1	--	--
218	EXISTING	--	--	--	--	--	--	--	--	--	--	--
219	1	WD-SC	NAT	3'-0"	7'-0"	1 3/4"	--	--	PT	--	--	7
220	2	WD-SC	NAT	3'-0"	7'-0"	1 3/4"	--	--	PT	--	1 HR	7
221	1	WD-SC	NAT	3'-0"	7'-0"	1 3/4"	A	HM	PT	HW-2	--	--

MATERIAL/FINISH ABBREVIATIONS

HM HOLLOW METAL
 NAT NATURAL CLEAR FINISH
 PT PAINT
 SC SOLID CORE
 WD WOOD

HARDWARE

HW-1 HINGES
 PASSAGE SET
 STOP
 HW-2 HINGES
 LOCKSET
 STOP

NOTES

- ALL DOORS TO BE PREFINISHED STAINED BIRCH SOLID CORE WOOD. GLASS WHERE NOTED.
- LOCK AND LATCHSETS TO BE SARGENT 10 LINE. LEVER HANDLES ONLY.
- HARDWARE FINISH TO BE BRUSHED CHROME.
- ALL DOORS TO BE ON OWNER'S MASTER KEY SYSTEM.
- WOOD JAMB AND CASINGS.
- COORDINATE PROGRAMMING OF SWIPE CARD SYSTEM WITH OWNER'S VENDOR.
- NEW DOOR IN EXISTING FRAME WITH EXISTING HARDWARE.
- NO DOOR - GLASS ONLY IN WOOD FRAME.

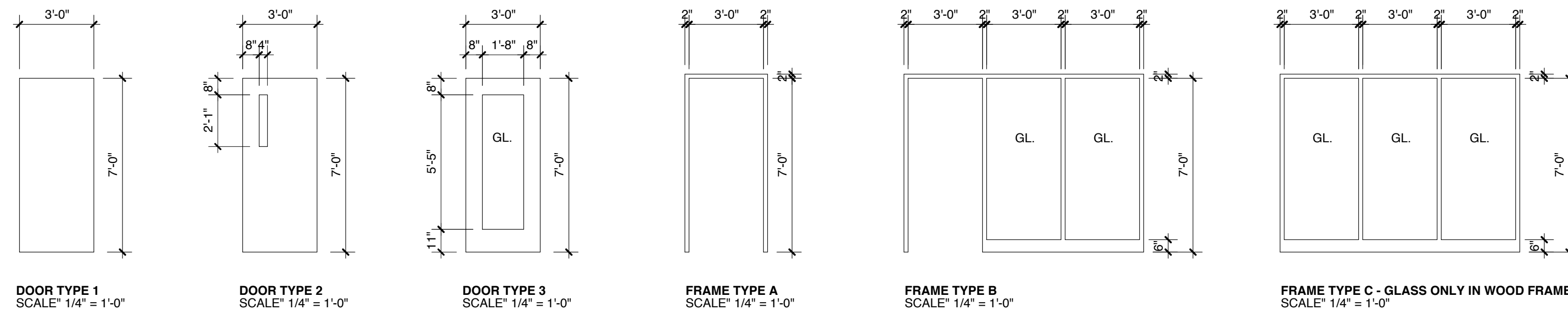
ROOM FINISH SCHEDULE											
NO.	NAME	FLOORS		BASE		WALLS		TRIM		CEILING	
		MAT.	HT.	MAT.	HT.	MAT.	HT.	MAT.	HT.	MAT.	HT.
201	CONFERENCE	CPT	VB	PT	PT	PT	PT	PT	PT	8'-6"	ACT 3
202	RECEPTION	CPT	VB	PT	PT	PT	PT	PT	PT	8'-6"	ACT 3
203	CORRIDOR	CPT	VB	PT	PT	PT	PT	PT	PT	8'-6"	ACT 3
204	STORAGE	CPT	VB	PT	PT	PT	PT	PT	PT	8'-6"	ACT 3
205	WORKROOM	VCT	VB	PT	PT	PT	PT	PT	PT	8'-6"	ACT 3
206	CONFERENCE	CPT	VB	PT	PT	PT	PT	PT	PT	8'-6"	ACT 3
207	OFFICE	CPT	VB	PT	PT	PT	PT	PT	PT	8'-6"	ACT 3
208	OFFICE	CPT	VB	PT	PT	PT	PT	PT	PT	8'-6"	ACT 3
209	OFFICE	CPT	VB	PT	PT	PT	PT	PT	PT	8'-6"	ACT 3
210	OFFICE	CPT	VB	PT	PT	PT	PT	PT	PT	8'-6"	ACT 3
211	OFFICE	CPT	VB	PT	PT	PT	PT	PT	PT	8'-6"	ACT 3
212	OFFICE	CPT	VB	PT	PT	PT	PT	PT	PT	8'-6"	ACT 3
213	OFFICE	CPT	VB	PT	PT	PT	PT	PT	PT	8'-6"	ACT 3
214	OFFICE	CPT	VB	PT	PT	PT	PT	PT	PT	8'-6"	ACT 3
215	ELECTRICAL	--	--	--	--	--	--	--	--	--	2
216	OPEN OFFICE	CPT	VB	PT	PT	PT	PT	PT	PT	8'-6"	ACT 3
217	BREAK ROOM	VCT	VB	PT	PT	PT	PT	PT	PT	8'-6"	ACT 3
218	ELECTRICAL	--	--	--	--	--	--	--	--	--	2
219	STORAGE	--	--	PT	PT	PT	PT	PT	PT	8'-6"	ACT 3, 4
220	HALL	CPT	VB	PT	PT	PT	PT	PT	PT	8'-6"	ACT 3
221	DATA	CPT	VB	PT	PT	PT	PT	PT	PT	8'-6"	ACT 3

MATERIAL/FINISH ABBREVIATIONS

ACT SUSPENDED ACOUSTICAL TILE
 CPT CARPET
 PT PAINT
 VB VINYL BASE
 VCT VINYL COMPOSITION TILE

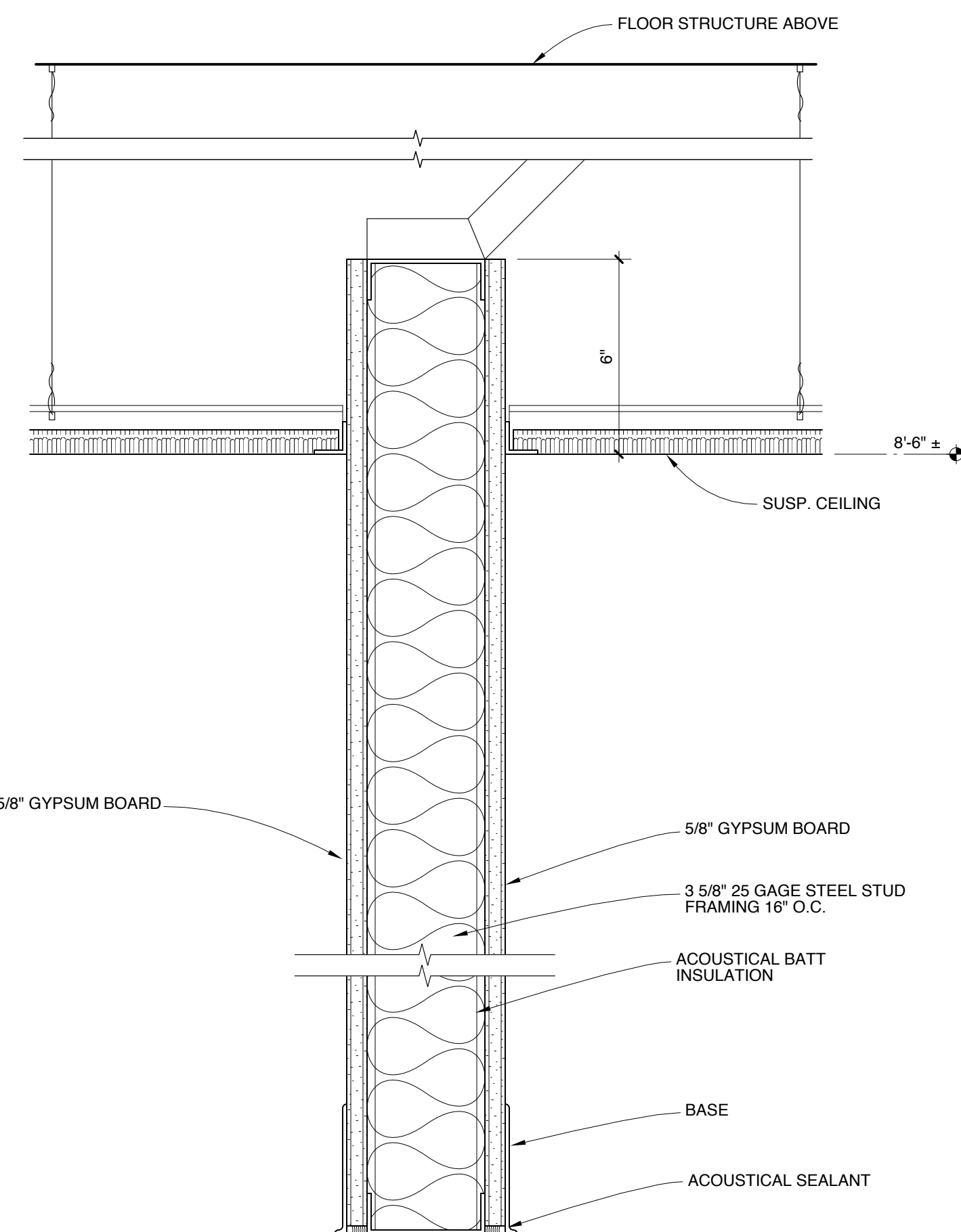
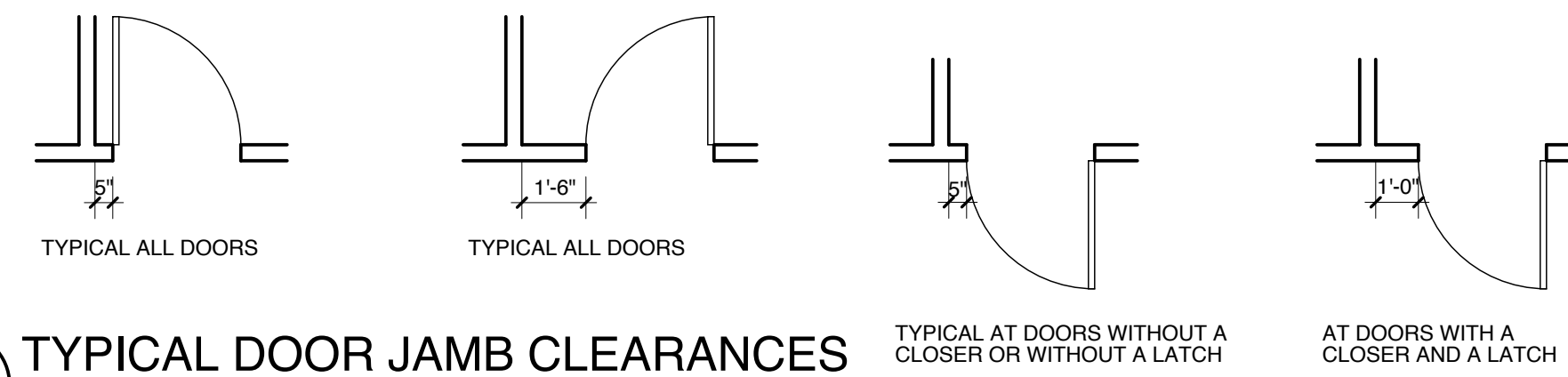
FINISH NOTES

- FINISH AND COLOR SELECTION BY TENANT.
- EXISTING FINISHES TO REMAIN. PATCH AS NEEDED, REPLACE ACOUSTICAL PANELS.
- EXISTING FLOORING AND BASE TO REMAIN.



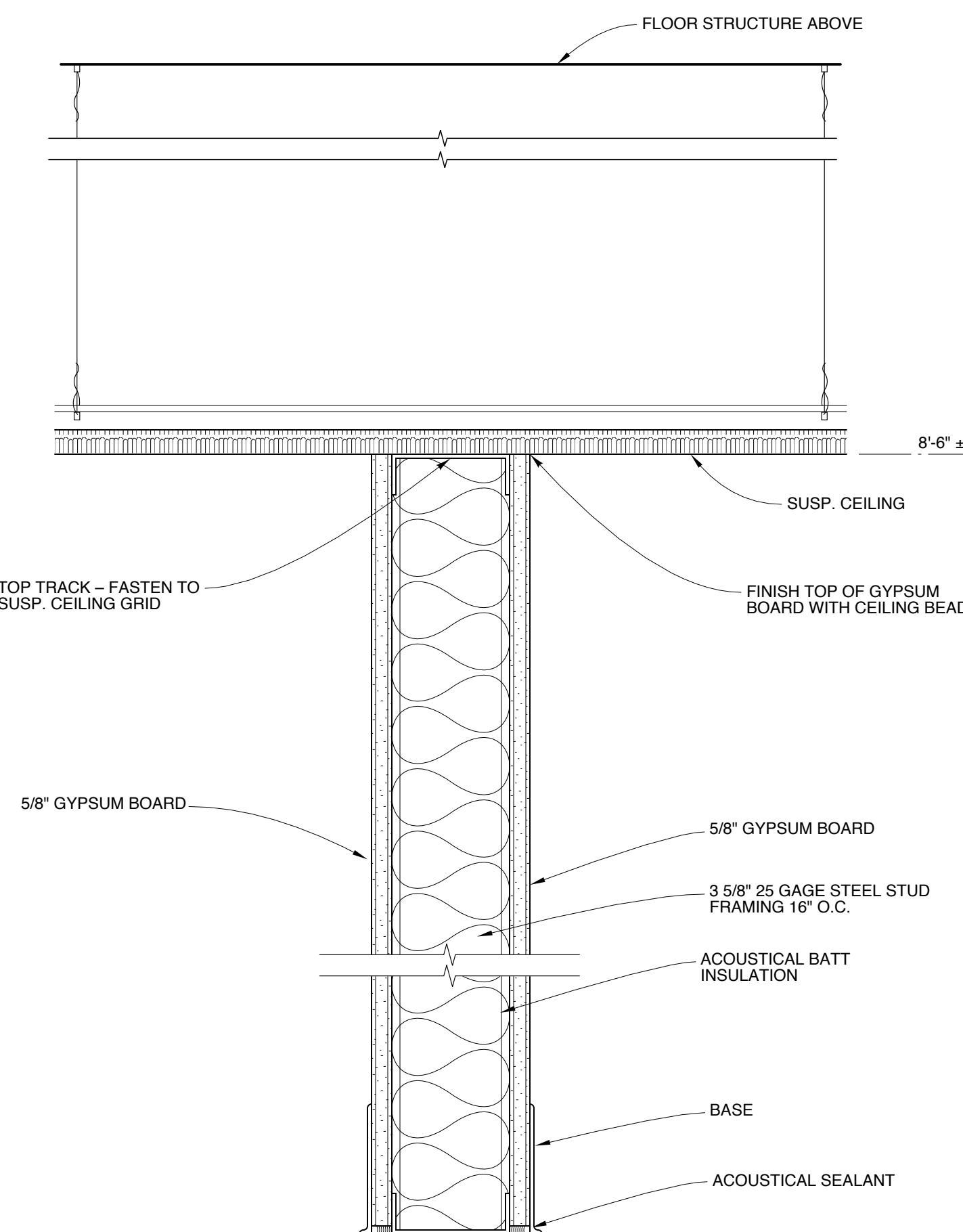
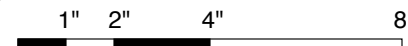
5 TYPICAL DOOR JAMB CLEARANCES

SCALE: 1/4" = 1'-0"



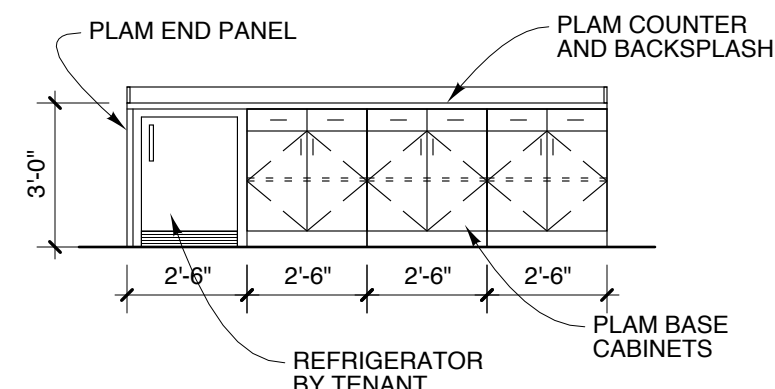
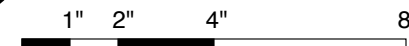
1 PARTITION TYPE P1

SCALE: 3" = 1'-0"



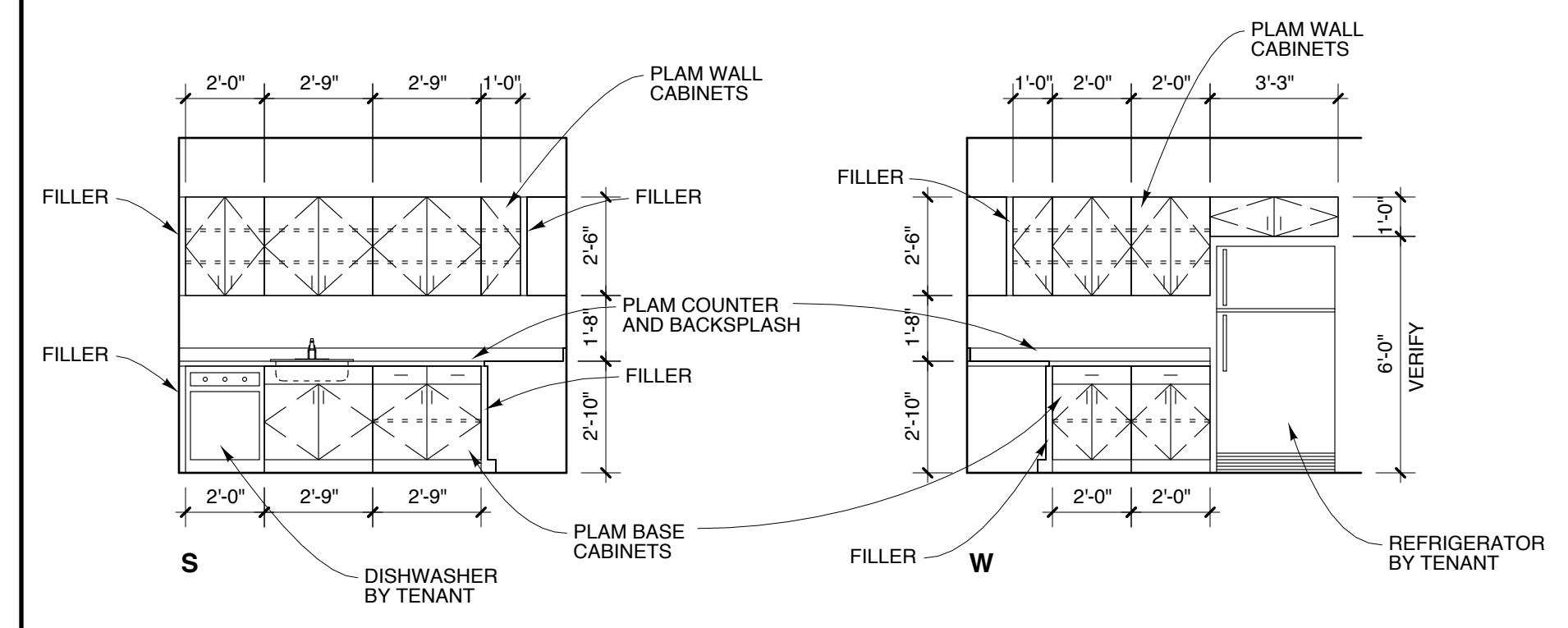
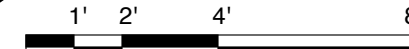
2 PARTITION TYPE P2

SCALE: 3" = 1'-0"



4 ELEVATION

SCALE: 1/4" = 1'-0"



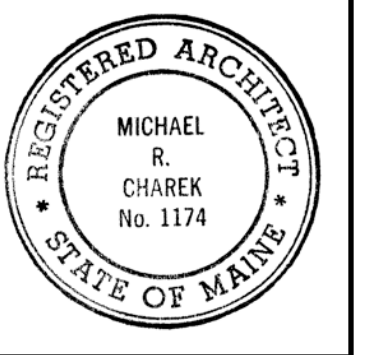
3 ELEVATION

SCALE: 1/4" = 1'-0"



Michael Charek Architects

25 Hartley Street
 Portland, Maine 04103
 (207) 761-0556



Offices for Professional Disability Associates

Second Floor
 One Monument Square
 Portland, Maine

Title

SCHEDULES AND DETAILS

Scale: AS NOTED

Date: 7/10/13

Revisions

Sheet

A4