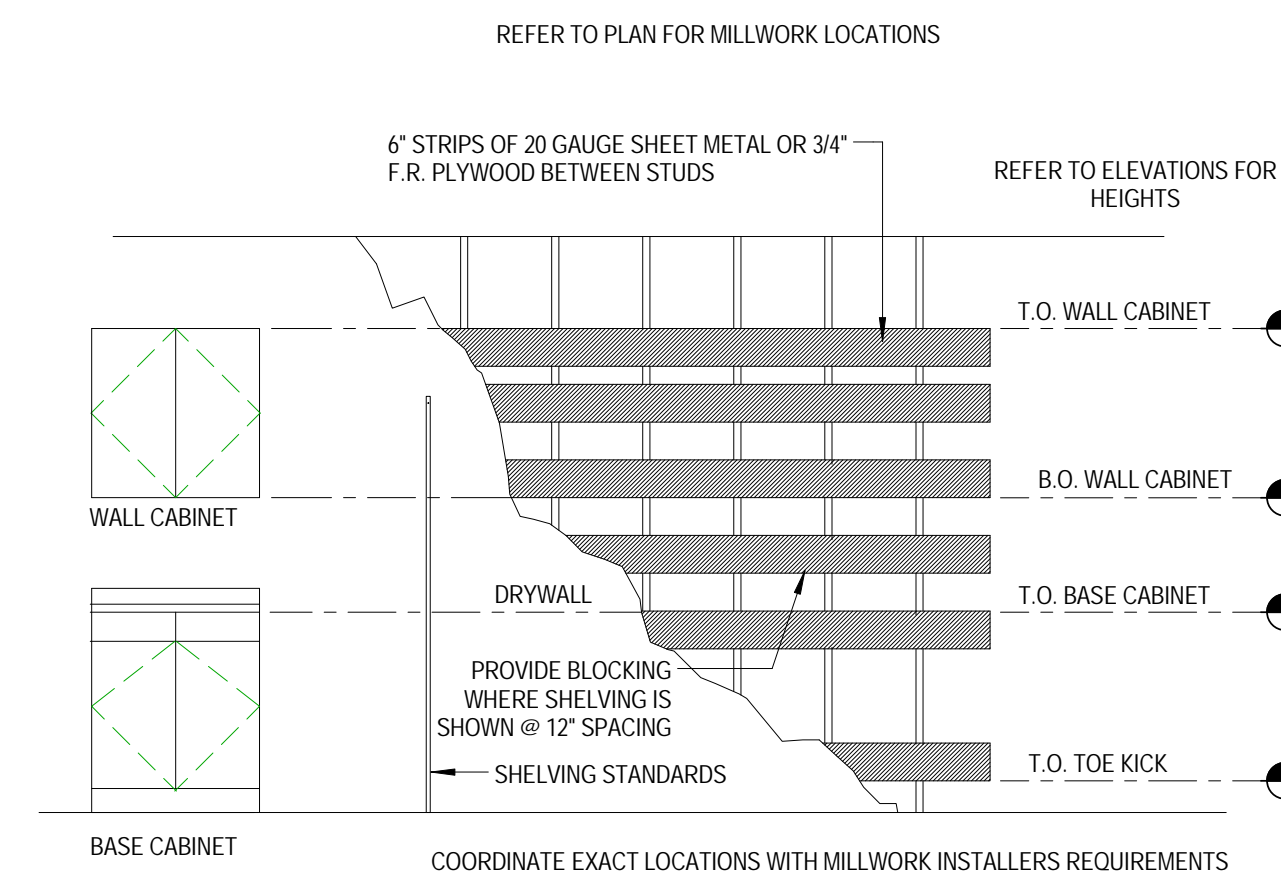
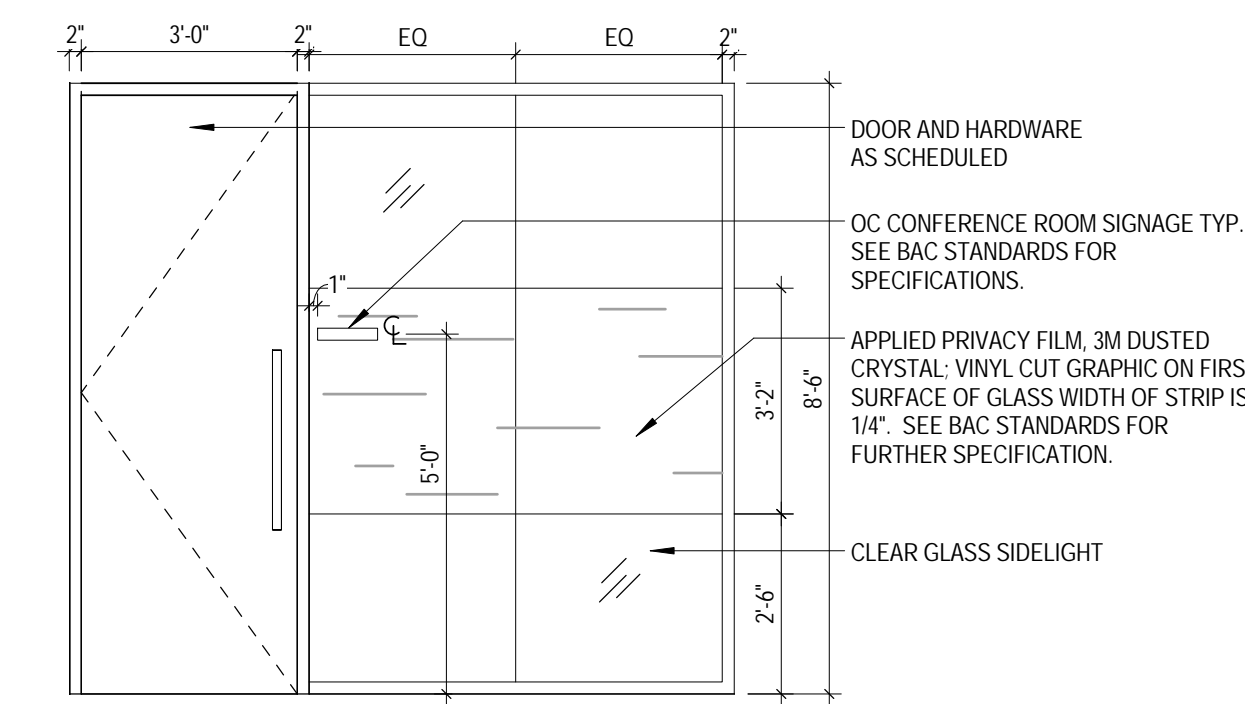


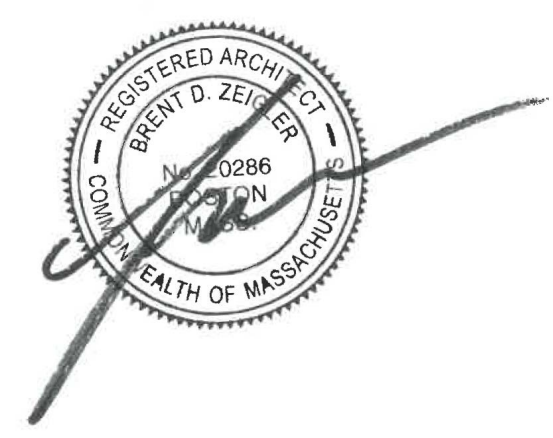
4 MERRILL LYNCH ENTRANCE - FROSTED GLASS
 3/8" = 1'-0"



7 BLOCKING DETAIL AT MILLWORK & SHELVING
 3\"/>



3 HOME LOANS APPLICATION ROOM FRONT
 3/8" = 1'-0"



REVISIONS

CONSTRUCTION DOCUMENTS

BANK OF AMERICA - HOME LOANS

BANK OF AMERICA
 1 MONUMENT SQUARE, PORTLAND ME

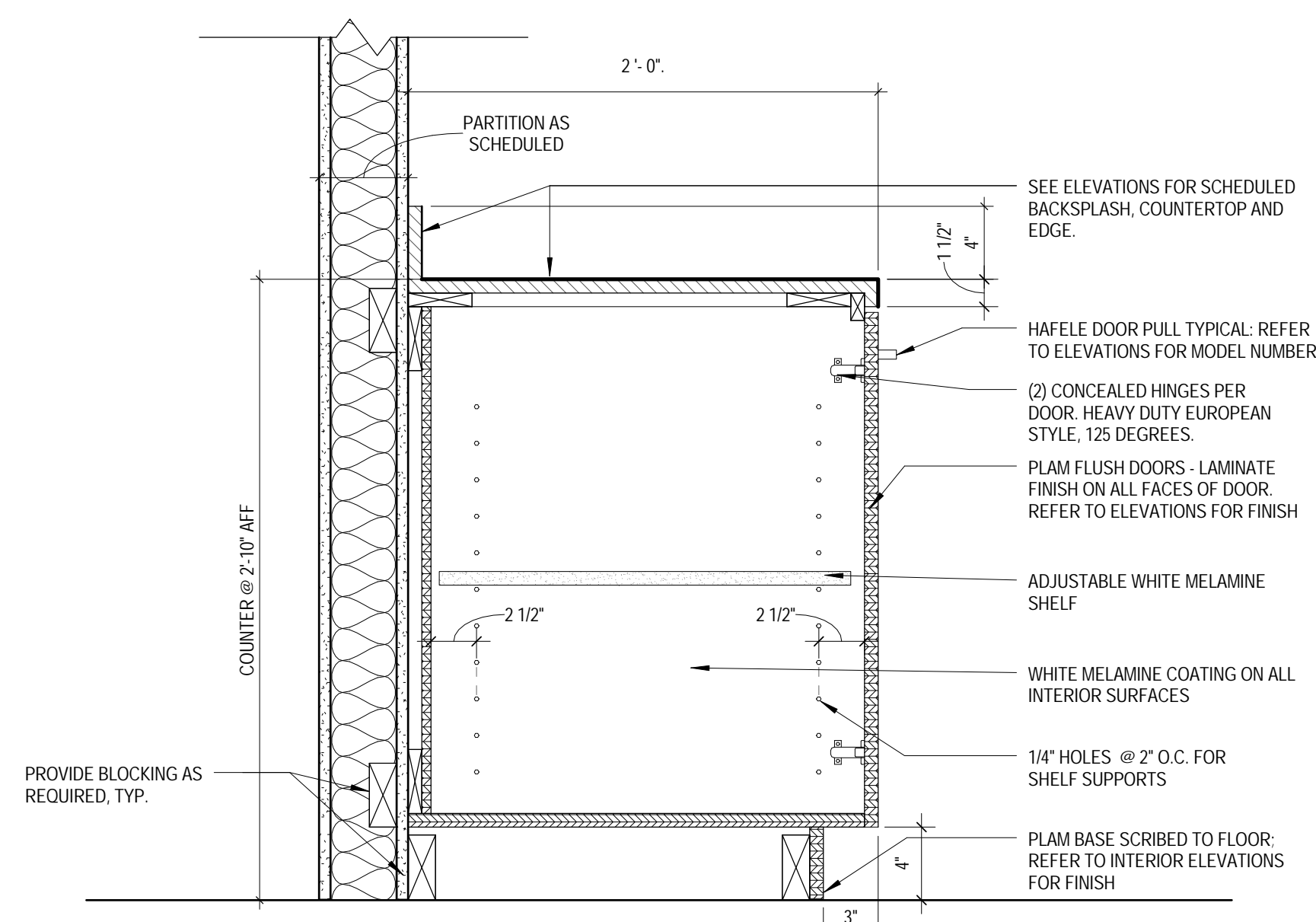
TITLE
 ELEVATIONS/DETAILS

DATE: 06/29/17
 JOB NO.: 17.0239

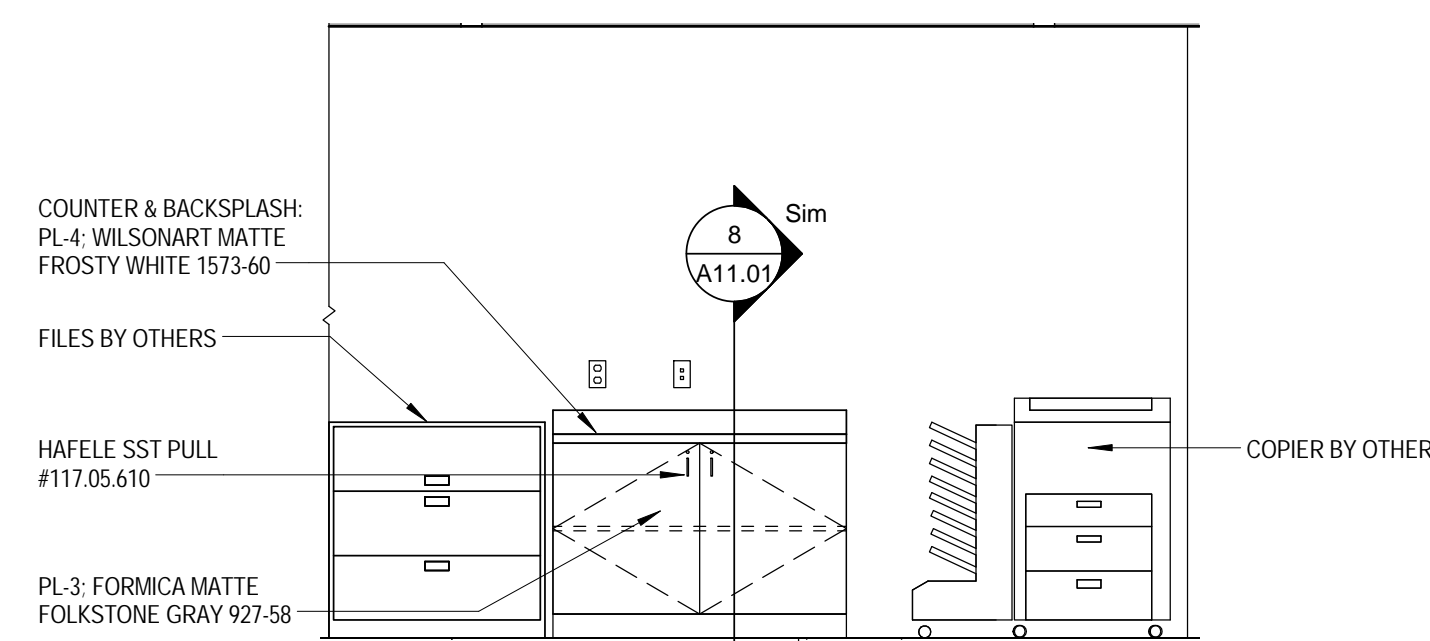
DRAWING NO.

A11.01

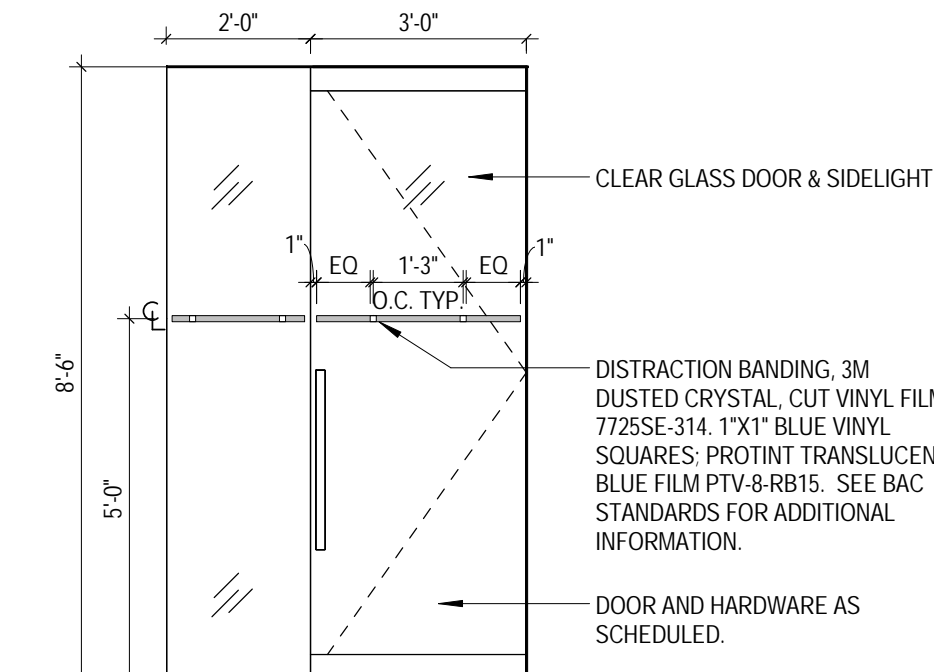
ISSUED FOR CONSTRUCTION



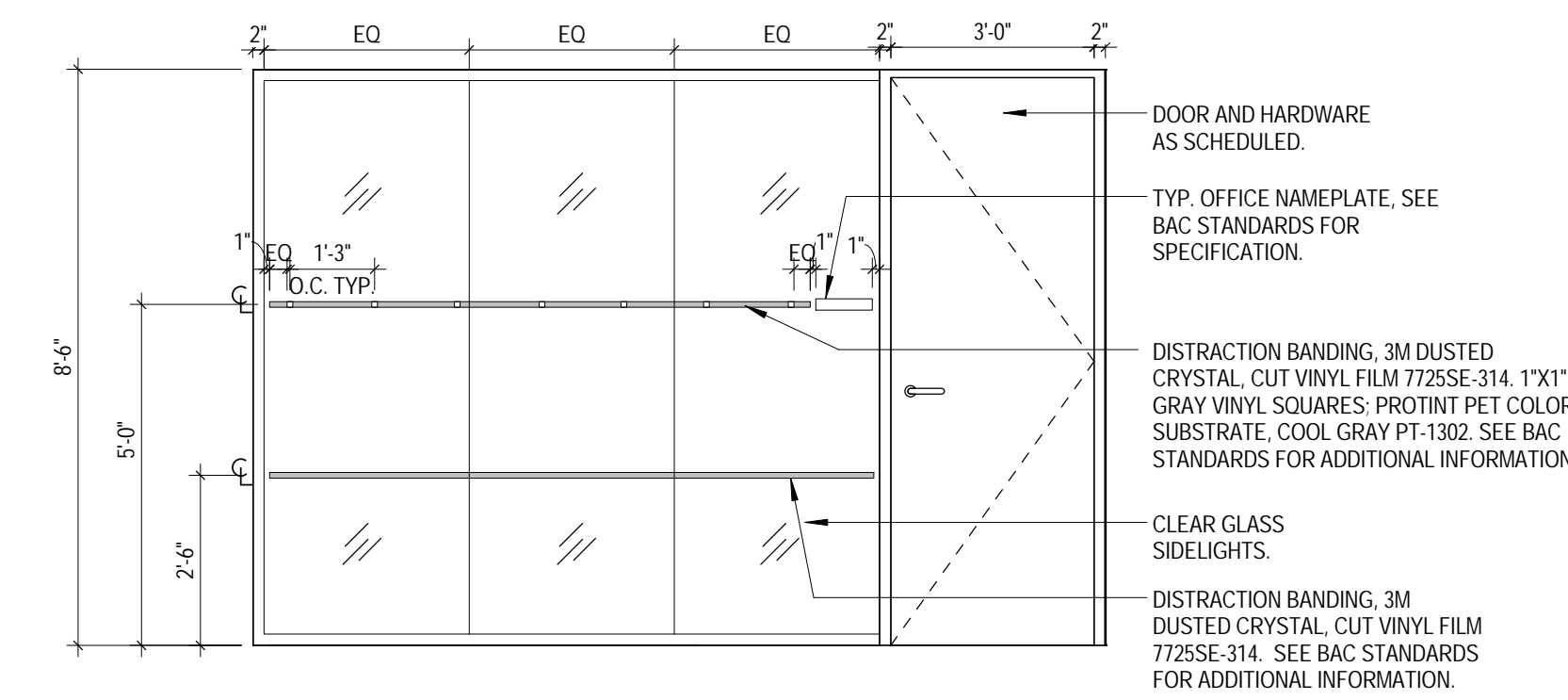
8 BASE CABINET WITH FLUSH DOOR
 1 1/2" = 1'-0"



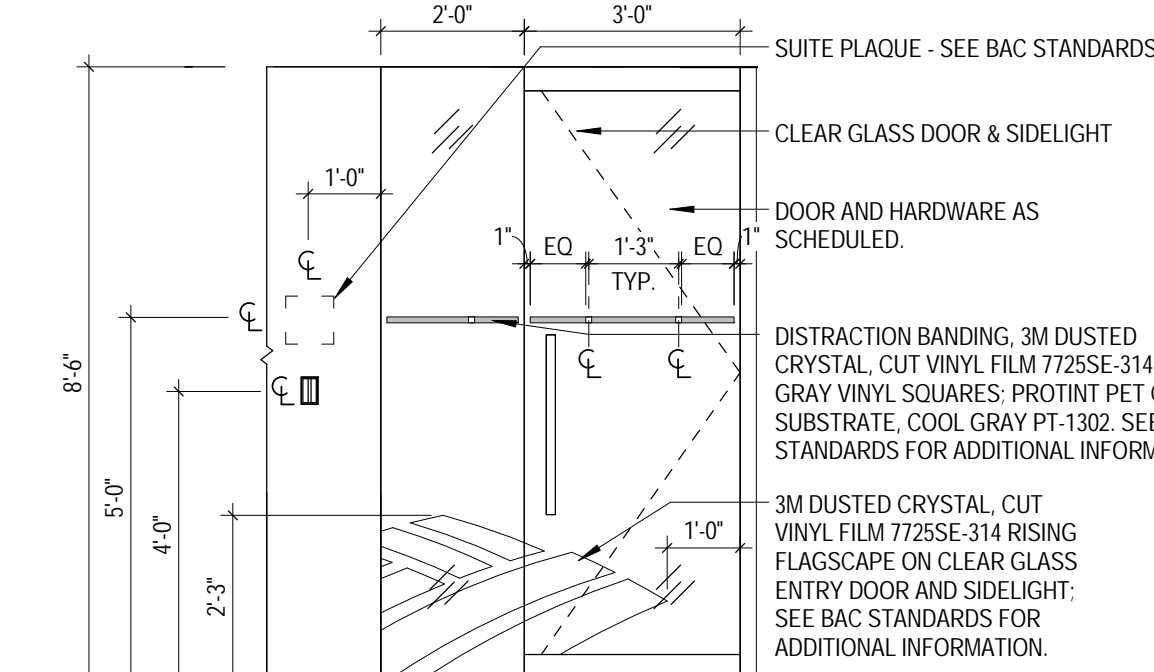
6 COPY/PRINT ELEVATION
 3/8" = 1'-0"



5 MERRILL LYNCH ENTRANCE - CLEAR GLASS
 3/8" = 1'-0"



2 HOME LOANS TYP. OFFICE FRONT
 3/8" = 1'-0"



1 HOME LOANS ENTRANCE
 3/8" = 1'-0"