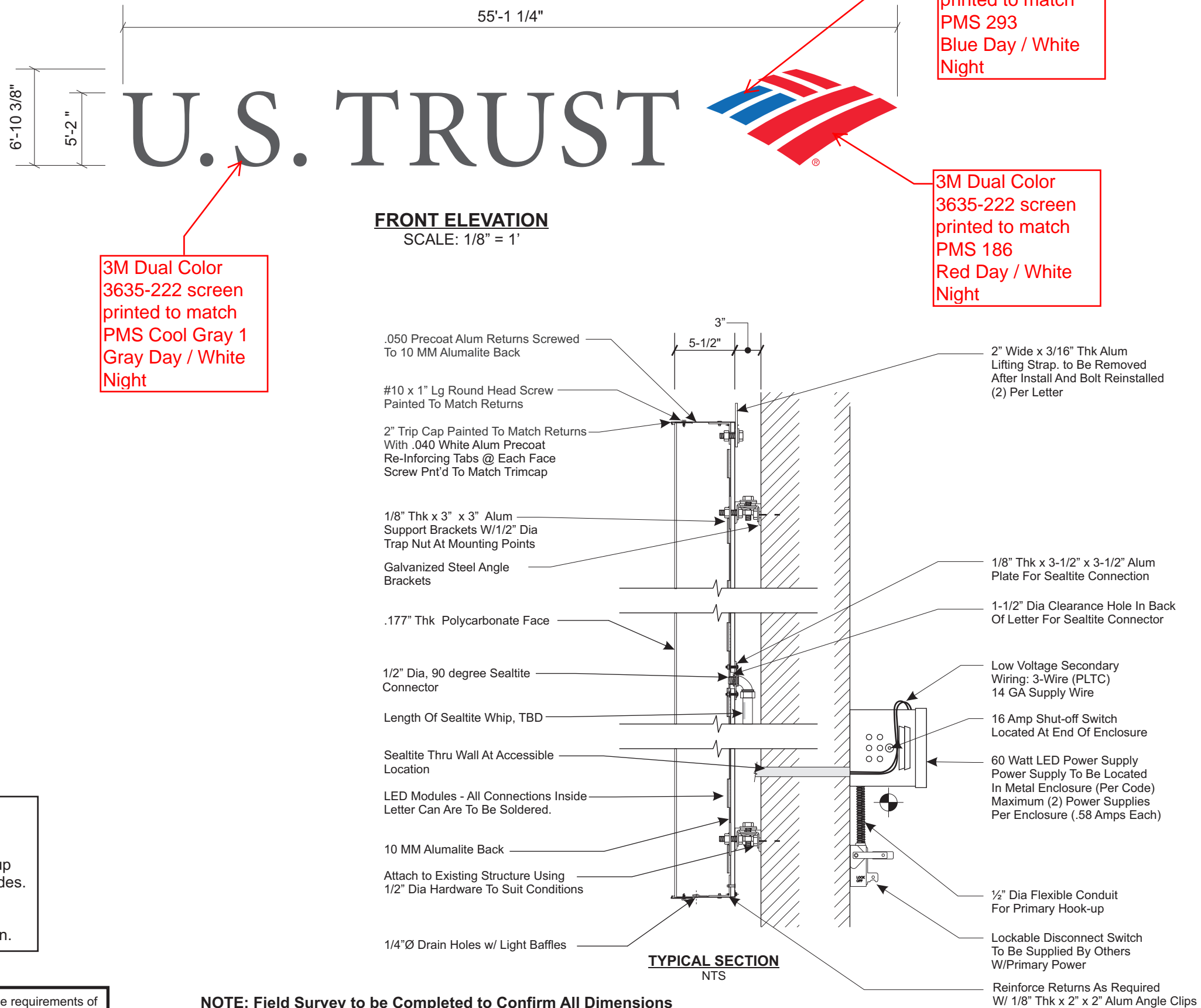


ENGINEERING
SHOP
VINYL / LAYOUT
ROUTING / KNIFE



**PERMITS
ONLY**

Approx Electrical Load
(15.66) Amps @ 120 Volts
Electrical Req'mts
(1) 20 Amp/120 Volt Circuits

STANDARD LETTER NOTES:

1. Sufficient Primary Circuit In Vicinity Of Sign By Others.
2. Letter To Letter Wiring & Final Primary Hook-up By Sign Installer, Where Allowed By Local Codes.
3. Sign Shall Be U.L. Listed.
4. Mounting Hardware By Sign Installer.
5. Full Size Drilling Template Furnished With Sign.

Note: This sign is intended to be installed in accordance with the requirements of Article 600 of the National Electrical Code and/or other applicable local codes. This includes proper grounding and bonding of the sign.

NOTE: Field Survey to be Completed to Confirm All Dimensions and Install Conditions before Fabrication of Signage is to Begin



PHILADELPHIASIGN
BRINGING THE WORLD'S BRANDS TO LIFE

707 West Spring Garden Street
Palmyra, New Jersey 08065

Phone: 856.829.1460
Fax: 856.829.8549
www.philadelphiasign.com

CUSTOMER:
BANK OF AMERICA

JOB NUMBER:

SIGN TYPE:
HIGHRISE CHANNEL LETTERS

LOCATION:
**ONE MONUMENT WAY
PORTLAND, ME 04101**

DATE:
7/16/15

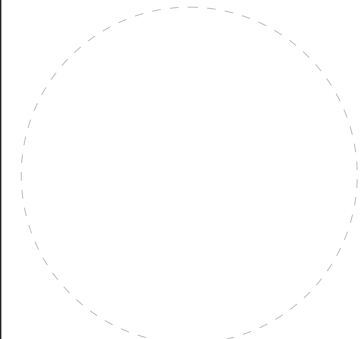
DRAWN BY:
JJM

REVISION:
Number: Date: By:

SHEET: ENG DEPT
1 OF 3

DWG NUMBER:
B63396

ENGINEER SEAL:



MAX DESIGN WIND SPEED 90 MPH
EXPOSURE C

THIS IS AN ORIGINAL UNPUBLISHED DRAWING CREATED BY PSCO. IT IS SUBMITTED FOR YOUR PERSONAL USE IN CONJUNCTION WITH A PROJECT BEING PLANNED FOR YOU BY PSCO. IT IS NOT TO BE SHOWN TO ANYONE OUTSIDE YOUR ORGANIZATION NOR IS IT TO BE USED, COPIED, REPRODUCED, OR EXHIBITED IN ANY FASHION.