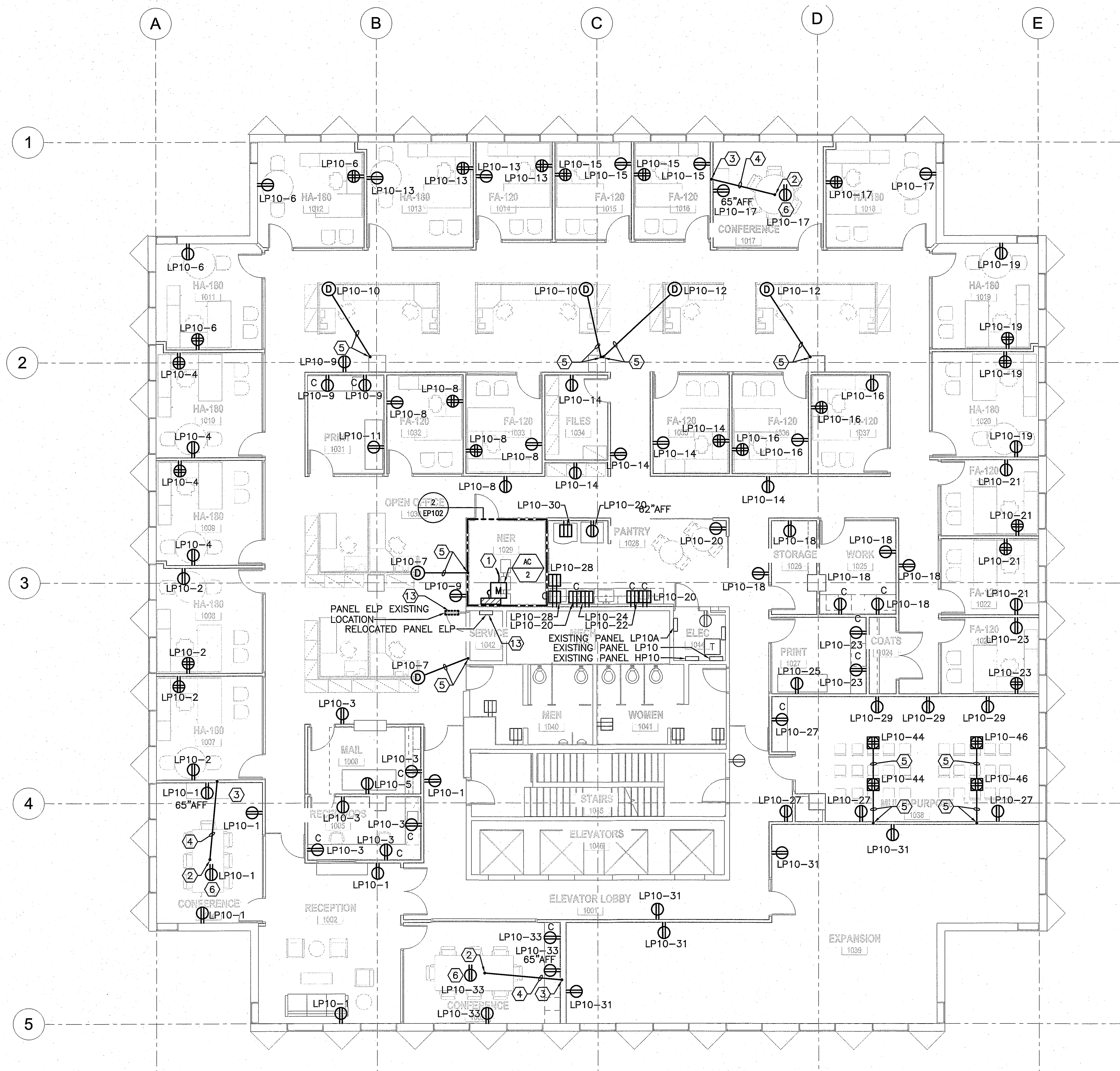


NOTE:

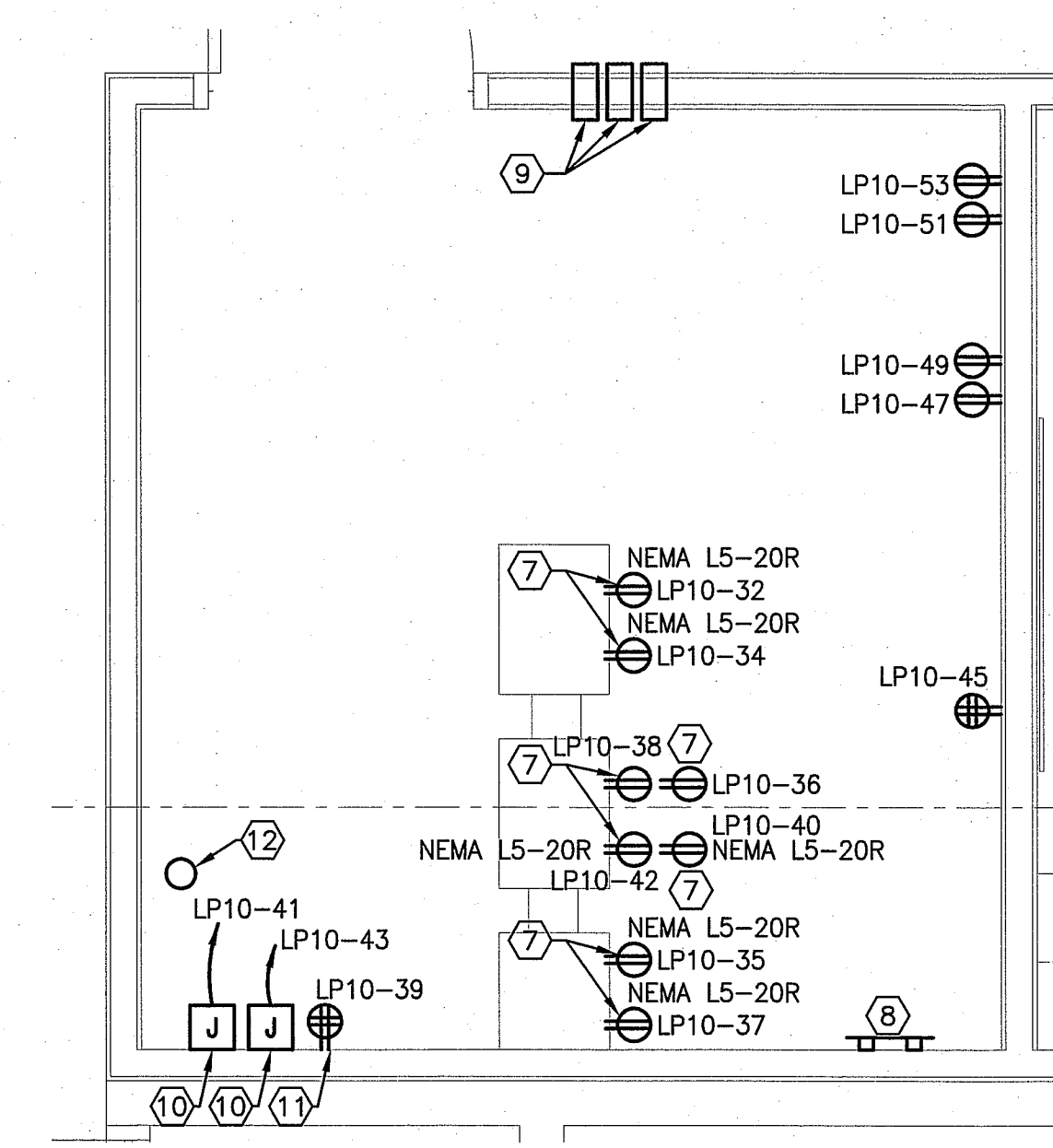
- SEE SHEET E-001 FOR LEGEND AND GENERAL NOTES.

KEYED NOTE:

- TO AC-2 CONDENSING UNIT MOUNTED ON ROOF.
- PROVIDE CORE TO ACCOMMODATE 3/4" TO CONFERENCE TABLE. COORDINATE CORE LOCATION WITH FURNITURE VENDOR. CORE TO BE INSIDE CONFERENCE TABLE LEG.
- PROVIDE CORE TO ACCOMMODATE 3/4" IN WALL SPACE.
- PROVIDE 3/4" CORE FROM CONFERENCE TABLE, THROUGH 9TH FLOOR CEILING SPACE, TO 10TH FLOOR CEILING SPACE FOR POWER TO CONFERENCE TABLE.
- PROVIDE 3/4" TO FLOOR BOX. PROVIDE CORE TO ACCOMMODATE CONDUIT IN WALL SPACE.
- PROVIDE RECEPTACLE MOUNTED FLUSH WITHIN CONFERENCE TABLE LEG. COORDINATE INSTALLATION WITH CONFERENCE TABLE MANUFACTURER.
- PROVIDE RECEPTACLE AT 96" AFF FOR USE WITH IT EQUIPMENT. COORDINATE FINAL MOUNTING HEIGHT WITH BANK OF AMERICA IT INSTALLER. MOUNT RECEPTACLE TO UNITSTRUT SUPPORT, MOUNTED TO CEILING.
- PROVIDE TELECOMMUNICATIONS GROUND BAR AT 18" AFF. COORDINATE REQUIREMENTS WITH BANK OF AMERICA IT INSTALLER.
- PROVIDE EZ-PATH SERIES 33 FIRE STOPPING DEVICE.
- PROVIDE POWER FOR SECURITY SYSTEM ACCESS CONTROL POWER SUPPLY. COORDINATE MOUNTING WITH SECURITY VENDOR.
- PROVIDE QUAD RECEPTACLE FOR SECURITY SYSTEM CAMERA DVR. COORDINATE MOUNTING WITH SECURITY VENDOR.
- PROVIDE 4" SLEEVE FOR FLOOR PENETRATION. COORDINATE EXACT LOCATION WITH BANK OF AMERICA IT INSTALLER.
- RELOCATE EXISTING 480/277V LIFE SAFETY PANEL "ELP" TO SERVICE ROOM 1042. RECONNECT FEEDERS (ESTIMATED #2 COPPER & # 6 GND IN 1-1/2" EMT) AND BRANCH CIRCUITS. SPLICE AND EXTEND CONDUIT AND CONDUCTORS AS NECESSARY. PROVIDE NEW FLOOR CORE WITHIN SERVICE ROOM, UNDER PANEL. FOR FEEDER. CONTRACTOR TO MINIMIZE DOWNTIME. COORDINATE RELOCATION WITH FACILITIES.



1 TENTH FLOOR PLAN
 1/8" = 1'-0"



2 NETWORK ROOM 1029 ENLARGED PLAN
 1/2" = 1'-0"

REVISIONS

BANK OF AMERICA - 9TH & 10TH FLOORS

BANK OF AMERICA
 1 MONUMENT SQUARE
 Portland, ME

TITLE
 TENTH FLOOR ELECTRICAL POWER PLAN

DATE **JOB NO.**
 May 11, 2015 15051.00

DRAWING NO. **EP102**

ISSUED FOR CONSTRUCTION

