



Title

DEMOLITION PLAN

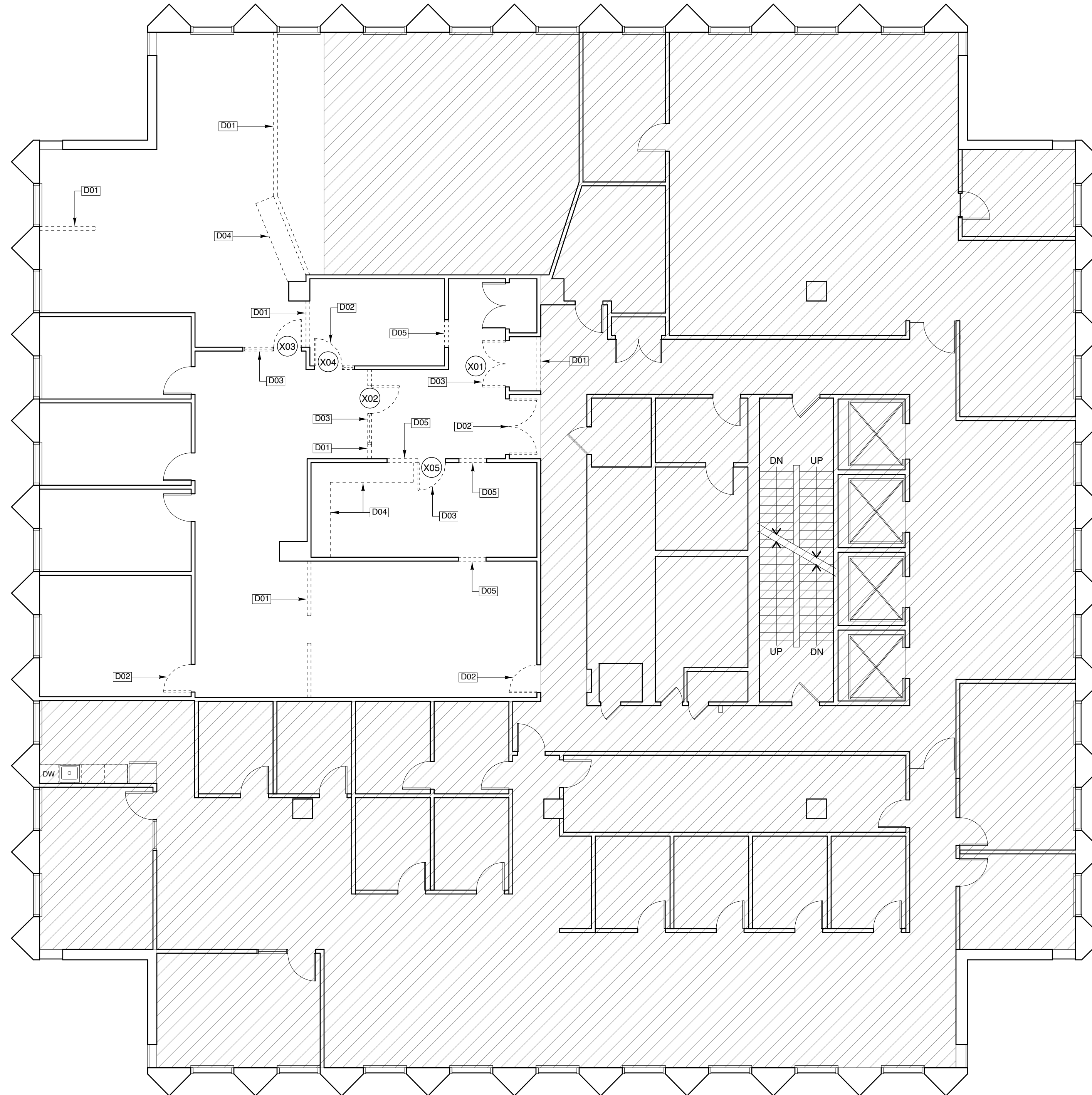
Scale: 1/8" = 1'-0"

Date: 8/8/14

Revisions

Sheet

D1



DEMOLITION GENERAL NOTES

- A. ITEMS INDICATED TO BE REMOVED AND SALVAGED REMAIN OWNER'S PROPERTY. REMOVE, CLEAN, AND DELIVER TO OWNER'S DESIGNATED STORAGE AREA.
- B. COMPLY WITH EPA REGULATIONS AND HAULING AND DISPOSAL REGULATIONS OF AUTHORITIES HAVING JURISDICTION.
- C. OWNER WILL OCCUPY PORTIONS OF BUILDING IMMEDIATELY ADJACENT TO SELECTIVE DEMOLITION AREA. CONDUCT SELECTIVE DEMOLITION SO OWNER'S OPERATIONS WILL NOT BE DISRUPTED.
- D. IT IS NOT EXPECTED THAT HAZARDOUS MATERIALS WILL BE ENCOUNTERED IN THE WORK. IF MATERIALS SUSPECTED OF CONTAINING HAZARDOUS MATERIALS ARE ENCOUNTERED, DO NOT DISTURB. IMMEDIATELY NOTIFY ARCHITECT AND OWNER. OWNER WILL REMOVE HAZARDOUS MATERIALS UNDER A SEPARATE CONTRACT.
- E. MAINTAIN SERVICES/SYSTEMS INDICATED TO REMAIN AND PROTECT THEM AGAINST DAMAGE DURING SELECTIVE DEMOLITION OPERATIONS. BEFORE PROCEEDING WITH DEMOLITION, PROVIDE TEMPORARY SERVICES/SYSTEMS THAT BYPASS AREA OF SELECTIVE DEMOLITION AND THAT MAINTAIN CONTINUITY OF SERVICES/SYSTEMS TO OTHER PARTS OF THE BUILDING.
- F. LOCATE, IDENTIFY, SHUT OFF, DISCONNECT, AND CAP OFF UTILITY SERVICES AND MECHANICAL/ELECTRICAL SYSTEMS SERVING AREAS TO BE SELECTIVELY DEMOLISHED.
- G. PROVIDE TEMPORARY BARRICADES AND OTHER PROTECTION REQUIRED TO PREVENT INJURY TO PEOPLE AND DAMAGE TO ADJACENT BUILDINGS AND FACILITIES TO REMAIN.
- H. PROVIDE AND MAINTAIN SHORING, BRACING, AND STRUCTURAL SUPPORTS AS REQUIRED TO PRESERVE STABILITY AND PREVENT MOVEMENT, SETTLEMENT, OR COLLAPSE OF CONSTRUCTION AND FINISHES TO REMAIN OR CONSTRUCTION BEING DEMOLISHED.
- I. PROVIDE TEMPORARY WEATHER PROTECTION TO PREVENT WATER LEAKAGE AND DAMAGE TO STRUCTURE AND INTERIOR AREAS.
- J. PROTECT WALLS, CEILINGS, FLOORS, AND OTHER EXISTING FINISH WORK THAT ARE TO REMAIN. ERECT AND MAINTAIN DUSTPROOF PARTITIONS. COVER AND PROTECT FURNITURE, FURNISHINGS, AND EQUIPMENT THAT HAVE NOT BEEN REMOVED.
- K. NEATLY CUT OPENINGS AND HOLES PLUMB, SQUARE, AND TRUE TO DIMENSIONS REQUIRED. USE CUTTING METHODS LEAST LIKELY TO DAMAGE CONSTRUCTION TO REMAIN OR ADJOINING CONSTRUCTION.
- L. PROMPTLY REMOVE DEMOLISHED MATERIALS FROM OWNER'S PROPERTY AND LEGALLY DISPOSE OF THEM. DO NOT BURN DEMOLISHED MATERIALS.
- M. ITEMS TO BE REMOVED:
 - 1. SPECIFIC ITEMS AS INDICATED BY KEYNOTE AND LEGEND.
 - 2. FINISH FLOORING AND BASE IN ALL AREAS.
 - 3. CEILING TILE AND GRID AS INDICATED ON CEILING PLAN.
 - 4. LIGHT FIXTURES AS INDICATED ON CEILING PLAN.
 - 5. HVAC DIFFUSERS AND GRILLES AS NECESSARY.
- N. ITEMS TO BE SALVAGED FOR REUSE:
 - 1. LIGHT FIXTURES - PARABOLIC TYPE ONLY.
 - 2. HVAC DIFFUSERS AND GRILLES.
 - 3. DOORS AND FRAMES AS INDICATED WITH NUMBER.
 - 4. ITEMS OF CASEWORK AS INDICATED OR AS DIRECTED BY TENANT.

DEMOLITION KEYNOTES -- THIS SHEET ONLY

- D01 REMOVE EXISTING PARTITION.
- D02 REMOVE DOOR & FRAME
- D03 REMOVE DOOR & FRAME - SAVE FOR REUSE
- D04 REMOVE CASEWORK - SAVE FOR REUSE
- D05 CUT NEW DOOR OPENING

1 DEMOLITION PLAN
SCALE: 1/8" = 1'-0"
2' 4' 8' 16'

PARTITIONS/WALLS KEY
 ——— EXISTING TO REMAIN
 PARTITION/WALL TO BE REMOVED
 [Hatched Box] AREA N.I.C.

