

DOOR SCHEDULE												
NO.	DOOR TYPE	MAT.	FIN.	WIDTH	HEIGHT	THICK.	FRAME TYPE	MAT.	FIN.	HW.	FIRE RATING	NOTES
501	1	GL	FF	3'-6"	8'-0"	--	--	--	--	HW-1		1
502	--	--	--	--	--	--	--	--	--	--		2
503	--	--	--	--	--	--	--	--	--	HW-2		3
504	2	WD-SC	NAT	3'-0"	7'-0"	1 3/4"	A	HM	PT	HW-3		9
505	--	--	--	3'-0"	7'-0"	--	--	--	--	--		9
506	--	--	--	3'-0"	7'-0"	--	--	--	--	--		4
507	1	WD-SC	NAT	3'-0"	7'-0"	1 3/4"	A	HM	HM	HW-4		5
509	--	--	--	--	--	--	--	--	--	HW-2		7
510	1	WD-SC	NAT	3'-0"	7'-0"	1 3/4"	A	HM	PT	HW-4		6,8
511	NOT USED	--	--	--	--	--	--	--	--	--		2,8
512	--	--	--	--	--	--	--	--	--	HW-2		2,8
513	--	--	--	--	--	--	--	--	--	--		2,8
514	3	WD-SC	NAT	3'-0"	7'-0"	1 3/4"	A	HM	PT	HW-4		2,8
515	--	--	--	--	--	--	--	--	--	--		2,8
516	--	--	--	--	--	--	--	--	--	--		2,8
517	3	WD-SC	NAT	3'-0"	7'-0"	1 3/4"	A	HM	PT	HW-4		2,8
518	--	--	--	--	--	--	--	--	--	--		

MATERIAL/FINISH ABBREVIATIONS

FF	FACTORY FINISH
GL	GLASS
HM	HOLLOW METAL
NAT	NATURAL CLEAR FINISH
PT	PAINT
SC	SOLID CORE
WD	WOOD

HARDWARE

HW-1	BUILDING STANDARD HARDWARE INCLUDING HINGES, PUSH-PULL, CLOSER, MAGNETIC LOCK, CARD READER, AND PROXIMITY SENSOR.
HW-2	REUSE EXISTING HARDWARE
HW-3	HINGES
	PASSAGE SET
	STOP
HW-4	HINGES
	LOCKSET
	STOP

- NOTES**
- BUILDING STANDARD FRAMELESS GLASS DOOR WITH SIDELIGHT. EXISTING DOOR, FRAME, AND HARDWARE TO REMAIN
 - REUSE EXISTING DOOR & FRAME X01
 - REUSE EXISTING DOOR & FRAME X02
 - REUSE EXISTING DOOR & FRAME X03
 - REUSE EXISTING DOOR & FRAME X04
 - REUSE EXISTING DOOR & FRAME X05
 - PROVIDE LIGHT KIT IN EXISTING DOOR
 - GYPSON BOARD WRAPPED CASED OPENING

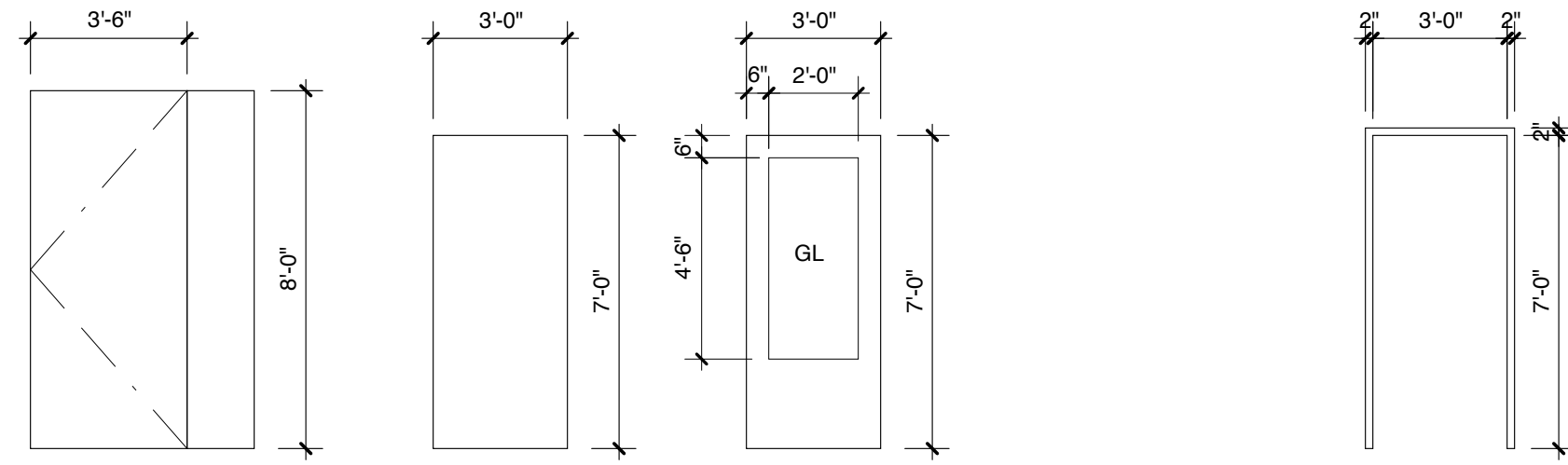
FINISH SCHEDULE									
NO.	NAME	FLOORS	WALLS	BASE	TRIM	CEILING	MATERIAL	NOTES	
501	ENTRY	CPT	PT	VB	PT	8'-6"	ACT	2	
502	CLOSET	CPT	PT	VB	PT	8'-6"	ACT	2	
503	CLOSET	CPT	PT	VB	PT	8'-6"	ACT	2	
504	BREAK ROOM	CPT	PT	VB	PT	8'-6"	ACT	2	
505	STORAGE / SERVER	VCT	PT	VB	PT	8'-6"	ACT	2	
506	OPEN OFFICE	VCT	PT	VB	PT	8'-6"	ACT	2	
507	OFFICE	CPT	PT	VB	PT	8'-6"	ACT	2	
508	WAITING	CPT	PT	VB	PT	8'-6"	ACT	2	
509	OPEN OFFICE	CPT	PT	VB	PT	8'-6"	ACT	2	
510	WAITING	CPT	PT	VB	PT	8'-6"	ACT	2	
511	OPEN OFFICE	CPT	PT	VB	PT	8'-6"	ACT	2	
512	CONFERENCE	CPT	PT	VB	PT	8'-6"	ACT	2	
513	OFFICE	CPT	PT	VB	PT	8'-6"	ACT	2	
514	OFFICE	SDT	PT	VB	PT	8'-6"	ACT	2	
515	OFFICE	CPT	PT	VB	PT	8'-6"	ACT	2	
516	OFFICE	CPT	PT	VB	PT	8'-6"	ACT	2	
517	OFFICE	LVT	PT	VB	PT	8'-6"	ACT	2	
518	OFFICE	CPT	PT	VB	PT	8'-6"	ACT	2	

MATERIAL/FINISH ABBREVIATIONS

ACT	SUSPENDED ACOUSTICAL TILE
CPT	CARPET
PT	PAINT
VB	VINYL BASE
VCT	VINYL COMPOSITION TILE

NOTES

- FINISH AND COLOR SELECTION BY TENANT.
- EXISTING GRID TO REMAIN. REPLACE CEILING TILES.

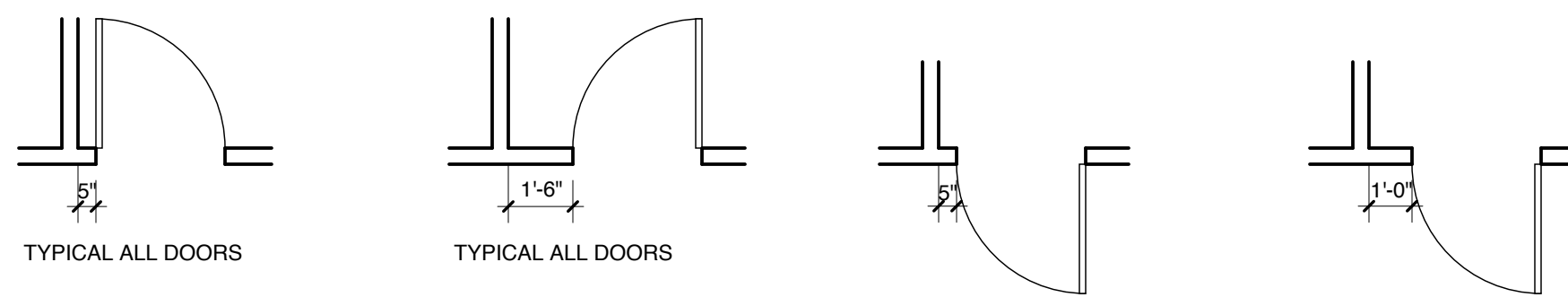


DOOR TYPE 1
SCALE: 1/4" = 1'-0"
BUILDING STANDARD FRAMELESS GLASS DOOR & SIDELIGHT (VERIFY DIMENSIONS)

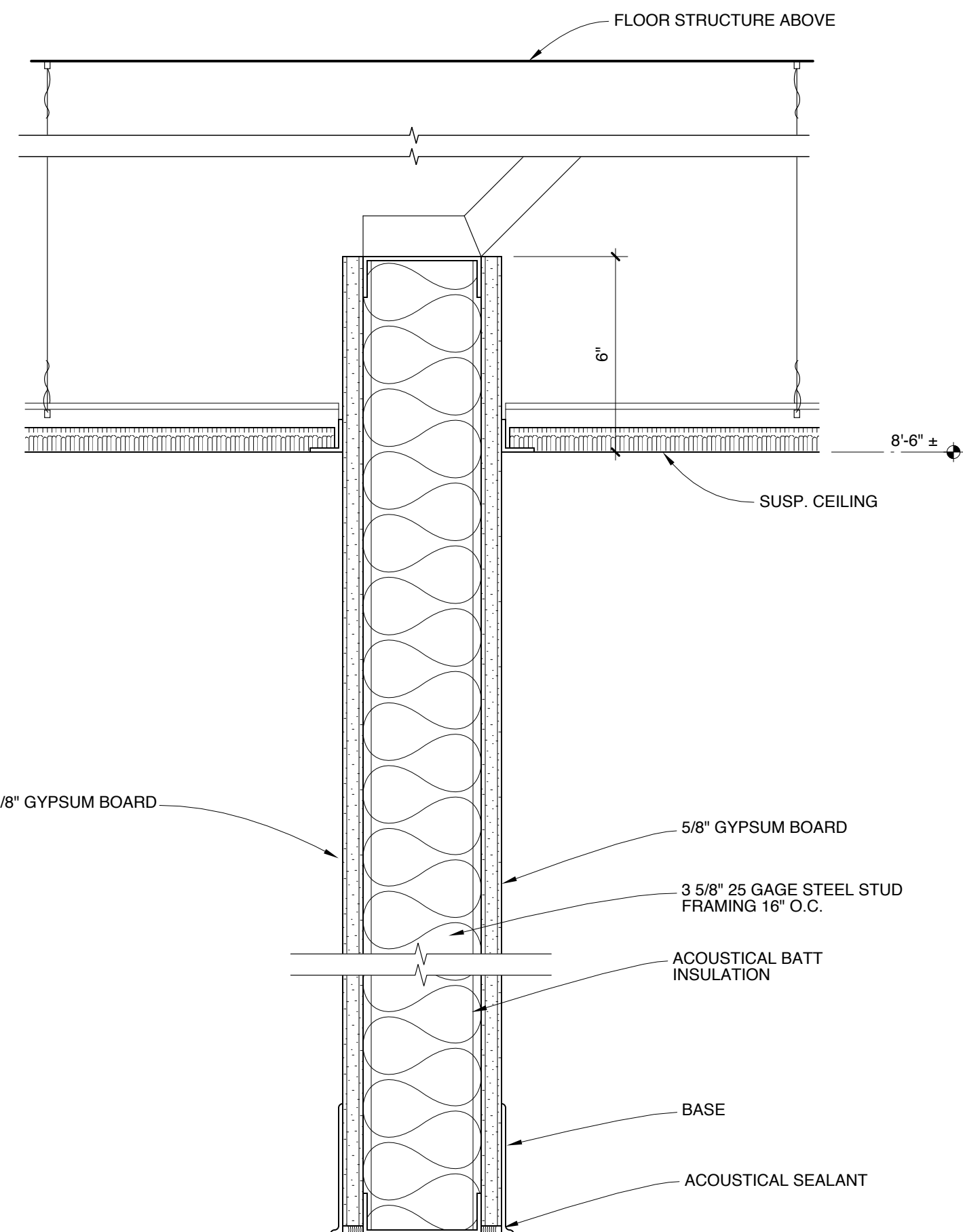
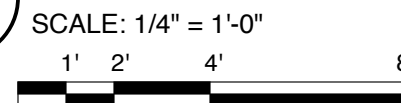
DOOR TYPE 2
SCALE: 1/4" = 1'-0"

DOOR TYPE 3
SCALE: 1/4" = 1'-0"

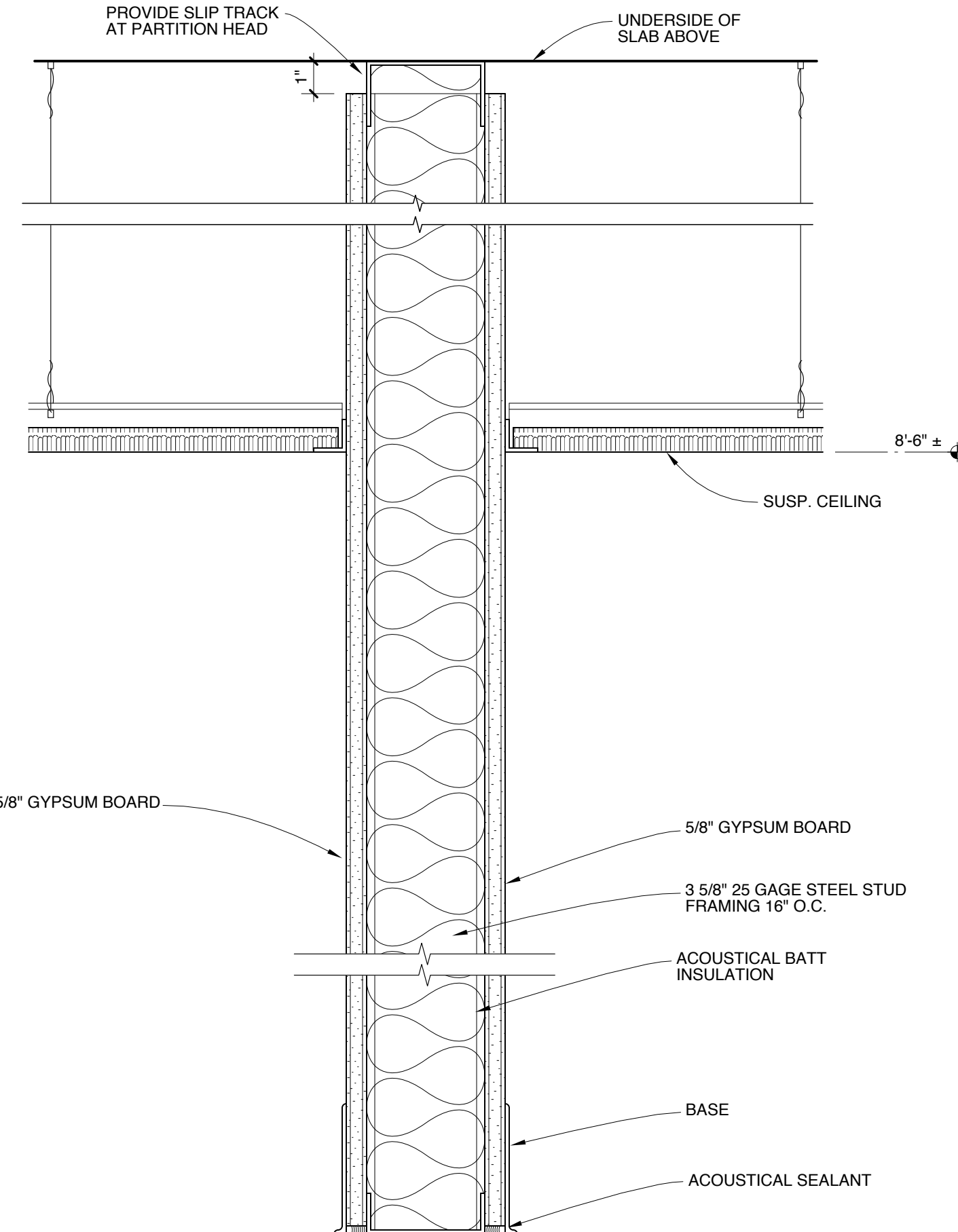
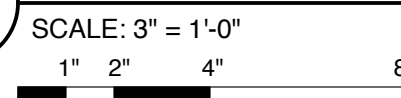
FRAME TYPE A
SCALE: 1/4" = 1'-0"



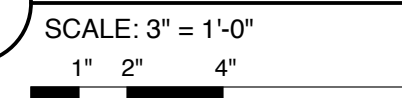
5 TYPICAL DOOR JAMB CLEARANCES



1 PARTITION TYPE P1



2 PARTITION TYPE P2



Michael Charek Architects

25 Hartley Street
Portland, Maine 04103
(207) 761-0556



Offices for Robinson Smith Wealth Advisors and Anne M. Romano, CPA

Fifth Floor
One Monument Square
Portland, Maine

Title
SCHEDULES AND DETAILS

Scale: AS NOTED

Date: 8/8/14

Revisions

Sheet

A4