

SQUARE ONE

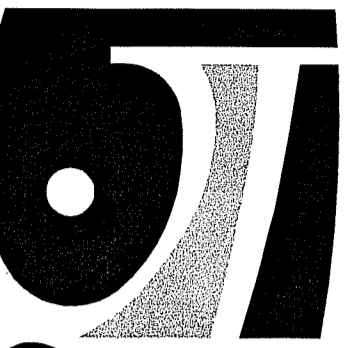
One Monument Square

Second and Fifth floor common area lighting

Portland, Maine

DRAWING INDEX

NO.	DESCRIPTION	DATE
G101	TITLE SHEET & DRAWING INDEX	06-26-12
A300	ENLARGED PARTIAL REFLECTED CEILING PLAN - SECOND FLOOR	
A301	ENLARGED PARTIAL REFLECTED CEILING PLAN - FIFTH FLOOR	



**Gawron
Turgeon**
ARCHITECTS

29 Black Point Road
Scarborough, Maine 04074
www.gawronturgeon.com
207-883-6307 tel 207-883-0361 fax

SQUARE ONE
ONE MONUMENT SQUARE
PORTLAND, MAINE

REVISIONS

#	DATE	DESCRIPTION

DATE:	06-26-12
PROJECT #:	020612.04
DRAWN BY:	DLP
CHECKED BY:	MET/SWG
DRAWING SCALE:	AS NOTED

SHEET TITLE

TITLE SHEET & DRAWING INDEX

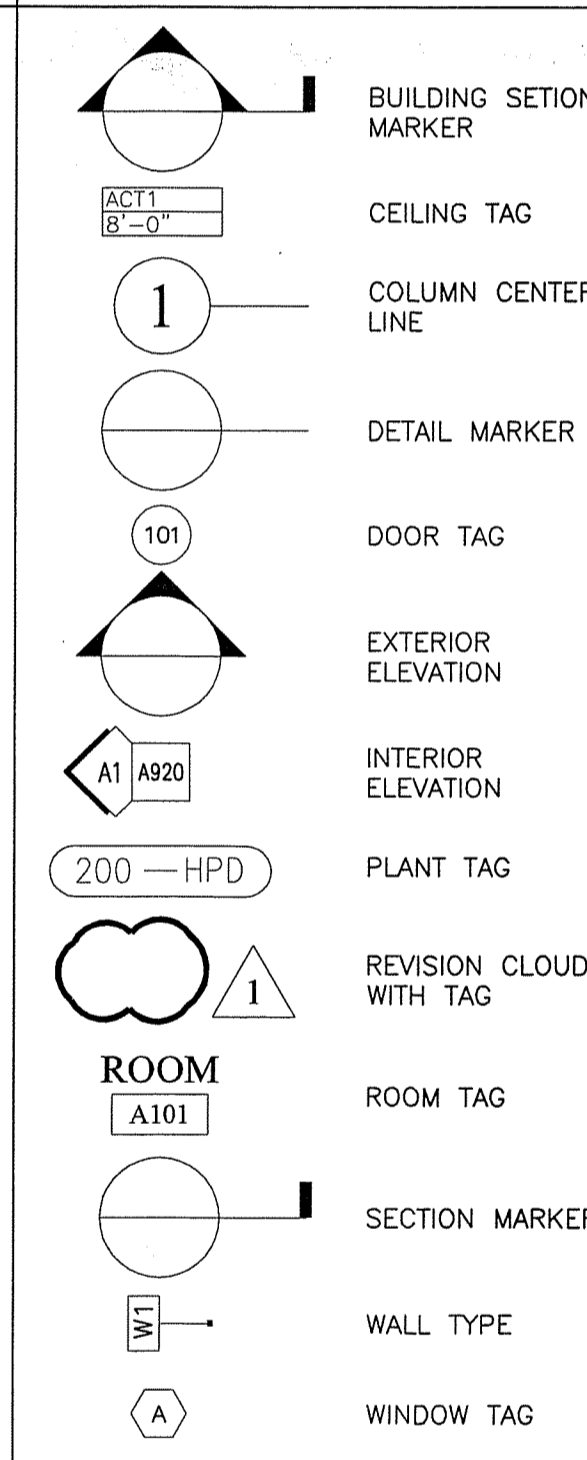
G101

© COPYRIGHT 1985-2008
REPRODUCTION OR USE OF THIS
DOCUMENT WITHOUT WRITTEN
PERMISSION OF GAWRON TURGEON
ARCHITECTS IS PROHIBITED

ABBREVIATIONS

ALUM OR AL ALUMINUM	GALV GALVANIZED	S SOUTH
AWP ACOUSTICAL WALL PANEL	GB GRAB BARS	SC SHOWER CURTAIN
ACT ACOUSTICAL CEILING TILE	GC GENERAL CONTRACTOR	SD SCHEDULE
BIT BITUMINOUS	GWB GYPSUM WALL BOARD	SECT SECTION
BM BENCH MARK	HC HANDICAP	SHT SHEET
BOT BOTTOM	HD WD HARDWOOD	SIM SIMILAR
BRG BEARING	HDR HARDWARE	SND SANITARY NAPKIN DISPOSAL
BRK BRICK	HM HOLLOW METAL	SO SQUARE
C CABINET	HORZ HORIZONTAL	SSS SYNTHETIC SPORTS SURFACE
CB CHALK BOARD	HT HEIGHT	STD STANDARD
CC CENTER TO CENTER	ID INSIDE DIAMETER	STL STEEL
CH CONCRETE HARDENER	IF INSIDE FACE	STRUC STRUCTURAL
CJ CONTROL JOINT	IN INCHES	SV SHEET VINYL
CL CENTER LINE	INSUL INSULATION	T TEMPERED (GLASS)
CLG CEILING	INT INTERIOR	TB TACK BOARD
CMU CONCRETE MASONRY UNITS	LOC LOCATION	THK THICKNESS
CONC CONCRETE	M MARBLE	TO TO
CONT CONTINUOUS	MAS MASONRY	TOB TOP OF BEAM
CONST CONSTRUCTION	MAX MAXIMUM	TOM TOP OF MASONRY
CONTR CONTRACTOR	MB MARKER BOARD	TOW TOP OF WALL
CT CERAMIC TILE	MECH MECHANICAL	TPP TOILET PAPER DISPENSER
DBL DOUBLE	MFR MANUFACTURER	TYP TYPICAL
DF DRINKING FOUNTAIN	MIN MINIMUM	UNO UNLESS NOTED OTHERWISE
DIA DIAMETER	MISC MISCELLANEOUS	VB VAPOR BARRIER
DIM DIMENSION	MO MASONRY OPENING	VCT VINYL COMPOSITION TILE
DNA DOES NOT APPLY	MR MOP RECEPTOR	VERT VERTICAL
DTL DETAIL	MRGB MOISTURE RESISTANT GYPSUM/WC	VVNT VINYL WALL COVERING
DWG DRAWING	MTL METAL	WEST WEST
E EAST	N NORTH	W WITH
EA EACH	NA NOT APPLICABLE	WC WATER CLOSET
EJ EXPANSION JOINT	NIC NOT IN CONTACT	WD WOOD
EL ELEVATION	NO NUMBER	
ELEC ELECTRICAL	NOM NOMINAL	
ELEV ELEVATOR	NTS NOT TO SCALE	
EMHO ELECTROMAGNETIC HOLD OPEN	OC OVERALL	
EQ EQUAL	ON CENTER	
EW EACH WAY	OD OUTSIDE DIAMETER	
EWC ELECTRIC WATER COOLER	OPNG OPENING	
EXIT OR (E) EXISTING	OPP OPPOSITE	
EXP EXPANSION	OF OUTSIDE FACE	
EXT EXTERIOR	P PAINT	
FD FLOOR DRAIN	PTD PAINTED	
FBN FOUNDATION	PL PLATE	
FE FIRE EXTINGUISHER	PLY WD PLYWOOD	
FFE FINISH FLOOR ELEVATION	PNL PANEL	
FIN FINISH	PT & D PRESSURE TREATED PAPER TOWEL AND WASTE DISPENSER	
FIN FL OR FF FINISH FLOOR	PTN PARTITION	
FIN GR FINISH GRADE	RD ROOF DRAIN	
FL FLOOR	RE REFER	
FR FIRE RATING	REF REFRIGERATOR	
FRMG FRAMING	REIN REINFORCED	
FT FEET (FOOT)	REO REQUIRED	
FV FIELD VERIFY	ROOM ROOM	
FWC FABRIC WALL COVERING	RO ROUGH OPENING	
G GRANITE		
GA GAUGE		

LEGEND



GENERAL NOTES:

1. THE GENERAL CONTRACTOR SHALL VERIFY ALL EXISTING CONDITIONS AND DIMENSIONS, AND REPORT ANY DISCREPANCIES TO THE ARCHITECT. CONTRACTOR SHALL PROCEED WITH THE WORK ONLY AFTER DISCREPANCY HAS BEEN RESOLVED WITH THE ARCHITECT.
2. DO NOT ALTER OR PENETRATE ANY EXISTING STRUCTURAL ELEMENTS, EXTERIOR WALL COMPONENTS, OR FIRE RATED WALLS.
3. THE LOCATIONS OF DOORS NOT DIMENSIONED SHALL BE 6 INCHES FROM ADJACENT WALL.
4. THE BUILDING SHALL BE CONSTRUCTED TO CONFORM WITH ALL APPLICABLE CODES INCLUDING, BUT NOT LIMITED TO, THE LATEST EDITIONS OF IBC 2009, BOCA, NFPA 101, & ANSI.
5. ALL WOOD IN CONTACT WITH CONCRETE SHALL BE PRESSURE PRESERVATIVE TREATED & ALL CONNECTIONS TO BE STAINLESS STEEL.
6. CONTRACTOR SHALL WORK FROM GIVEN DIMENSIONS AND LARGE SCALE DETAILS ONLY. DO NOT SCALE THE DRAWINGS.
7. NOT USED
8. EXISTING BUILDING COMPONENTS WHICH ARE AFFECTED BY NEW WORK AND DEMOLITION, OR WHICH MAY BE DAMAGED BY THE CONTRACTOR OR ANY SUBCONTRACTORS SHALL BE REPLACED OR RESTORED TO ORIGINAL CONDITION AND COLOR BY METHODS DESCRIBED IN THIS CONTRACT OR AS APPROVED BY THE ARCHITECT. THE GENERAL CONTRACTOR SHALL SEAL, PATCH AND FILL ANY FLOOR AND/OR WALL PENETRATIONS DUE TO DEMOLITION/CONSTRUCTION.
9. INSTALL BLOCKING BEHIND ALL SURFACE APPLIED FIXTURES, TRIM, CABINETS, COUNTER TOPS, AND GRAB BARS WHEN MOUNTED ON STUD WALLS.
10. AFTER HOUR WORK IS REQUIRED FOR ALL CORE DRILLS AND ACCESS TO THE SECOND FLOOR TENANT SUITE WILL NEED TO BE COORDINATED.
11. CONTRACTOR SHALL VERIFY SIZE AND LOCATION OF EXISTING MECHANICAL AND PLUMBING ELEMENTS. CONTRACTOR SHALL RENOVATE EXISTING ALARM SYSTEM TO MAINTAIN CONFORMANCE TO NFPA 13 & 101. CONTRACTOR SHALL VERIFY SIZE & LOCATION OF ALL ELECTRICAL SERVICES AND EQUIPMENT.
12. NOT USED
13. FINISHES: FINISHES OTHER THEN THE STANDARD FINISHES ARE ALL INDICATED ON THE DRAWINGS. CEILING FINISHES ARE SHOWN ON THE REFLECTED CEILING PLANS AND ALL OTHER FINISHES ARE SHOWN ON THE INTERIOR FINISH LEGEND AND SCHEDULE AND/OR INTERIOR ELEVATIONS. FINISHES INDICATED FOR A PARTICULAR ROOM OR SPACE ARE APPLICABLE FOR THE ENTIRE ROOM OR SPACE, UNLESS OTHERWISE NOTED.
14. ALL EXPOSED SURFACES ARE TO BE PAINTED, WHETHER OR NOT INDICATED ON THE DRAWINGS, EXCEPT AS FOLLOWS: WHERE SPECIAL COATINGS ARE INDICATED; PREFINISHED ITEMS, CONCEALED SURFACES, OPERATING PARTS, AND LABELS. IF PREFINISHED, PAINTING THE FOLLOWING: EXPOSED MECHANICAL DUCTWORK, WALL DIFFUSERS, GRILLES AND LOUVERS, ROOF TOP MECHANICAL EQUIPMENT, AND SPEAKER GRILLES. FINISHED METAL SURFACES, EXCEPT AS LISTED ABOVE. SEE SPECIFICATIONS ON DRAWINGS IDENTIFYING THE TYPES OF PAINTS AND SPECIALTY COATINGS TO BE USED IN ACCORDANCE WITH MATERIAL BEING PAINTED OR COATED.
15. BUILDING INSULATION: PROVIDE AS INDICATED ON WALL DETAILS AND IN ACCORDANCE WITH PARTITION TYPES, WHETHER OR NOT SHOWN IN DETAILS AND DRAWINGS. FOR DRAWING CLARITY, INSULATION MAY NOT BE SHOWN, EVEN IF IT IS PROVIDED.
16. CONTRACTOR SHALL SUBMIT SAMPLES OF ALL INTERIOR FINISHES FOR ARCHITECT'S REVIEW.
17. THE DESIGN AND INSTALLATION OF THE HVAC AND PLUMBING SYSTEMS, ELECTRICAL AND FIRE PROTECTION SYSTEMS, AND STRUCTURAL SYSTEMS SHALL BE PROVIDED THROUGH A DESIGN/BUILD CONTRACT UNDER THE GENERAL CONTRACTOR.

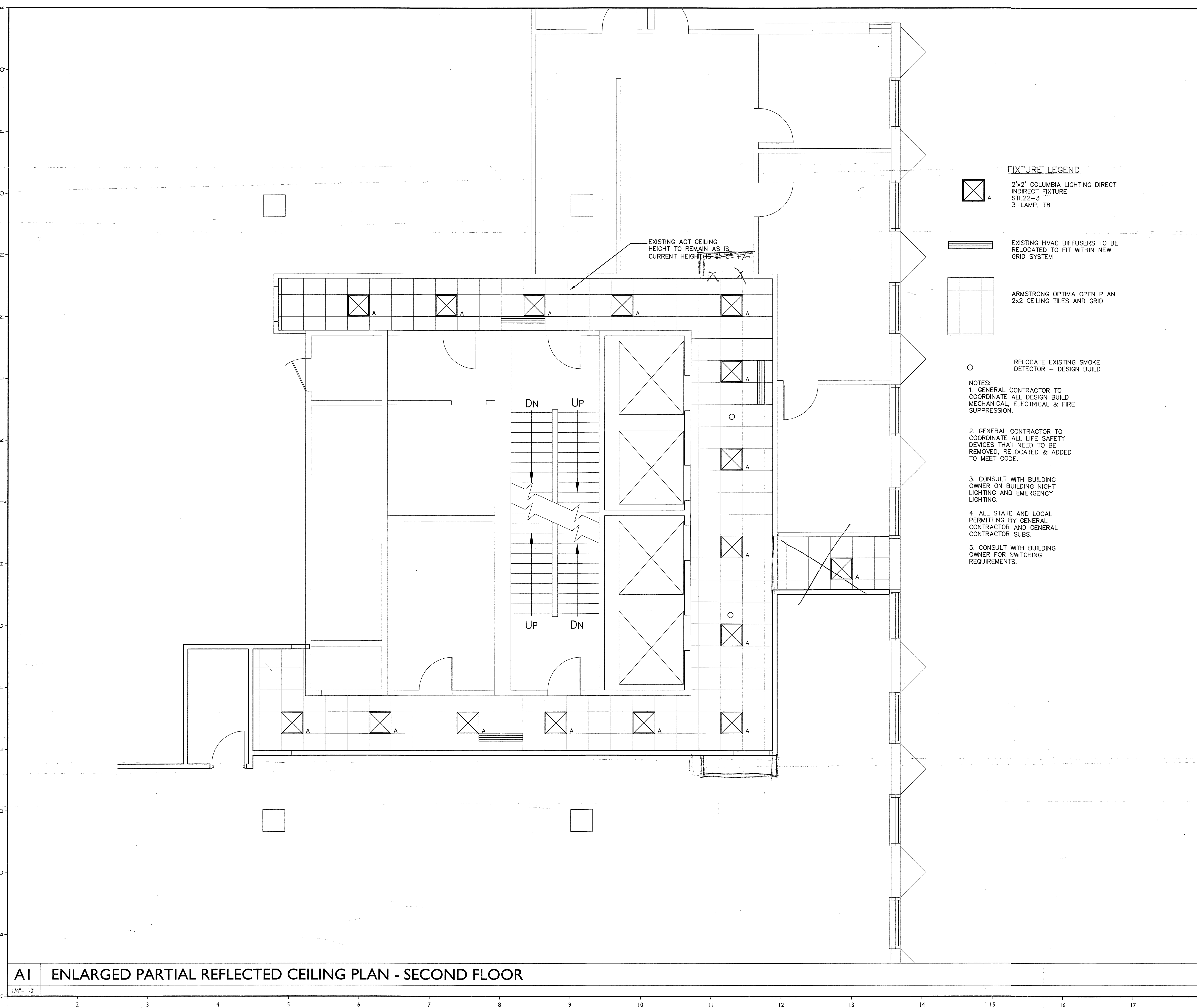
DEVELOPMENT DATA

LIFE SAFETY NOTES:
 TYPE OF CONSTRUCTION: TYPE II 0,0,0
 BUILDING IS SPRINKLED
 BUILDING TO HAVE A FULLY MONITORED FIRE DETECTION SYSTEM
 RENOVATED OCCUPANCY: BUSINESS "B" OCCUPANCY

BUILDING CODES:
 2009 International Building Code
 2009 NFPA 101

PROJECT DIRECTORY

OWNER: FINARD PROPERTIES LLC ONE MONUMENT SQUARE PORTLAND, ME 04101 207-321-6723	ARCHITECT: GAWRON TURGEON ARCHITECTS 29 BLACK POINT ROAD SCARBOROUGH, MAINE 04074 207-883-6307
CONTRACTOR: T.B.D.	MECHANICAL ENGINEER: DESIGN/BUILD
	ELECTRICAL ENGINEER: DESIGN/BUILD



FIXTURE LEGEND

☒ A
2'x2' COLUMBIA LIGHTING DIRECT
INDIRECT FIXTURE
STE22-3
3-LAMP, TB

▬▬▬
EXISTING HVAC DIFFUSERS TO BE
RELOCATED TO FIT WITHIN NEW
GRID SYSTEM

☐
ARMSTRONG OPTIMA OPEN PLAN
2x2 CEILING TILES AND GRID

○
RELOCATE EXISTING SMOKE
DETECTOR - DESIGN BUILD

NOTES:
1. GENERAL CONTRACTOR TO
COORDINATE ALL LIFE SAFETY
MECHANICAL, ELECTRICAL & FIRE
SUPPRESSION.

2. GENERAL CONTRACTOR TO
COORDINATE ALL LIFE SAFETY
DEVICES THAT NEED TO BE
REMOVED, RELOCATED & ADDED
TO MEET CODE.

3. CONSULT WITH BUILDING
OWNER ON BUILDING NIGHT
LIGHTING AND EMERGENCY
LIGHTING.

4. ALL STATE AND LOCAL
PERMITTING BY GENERAL
CONTRACTOR AND GENERAL
CONTRACTOR SUBS.

5. CONSULT WITH BUILDING
OWNER FOR SWITCHING
REQUIREMENTS.



SQUARE ONE
ONE MONUMENT SQUARE
PORTLAND, MAINE

REVISIONS

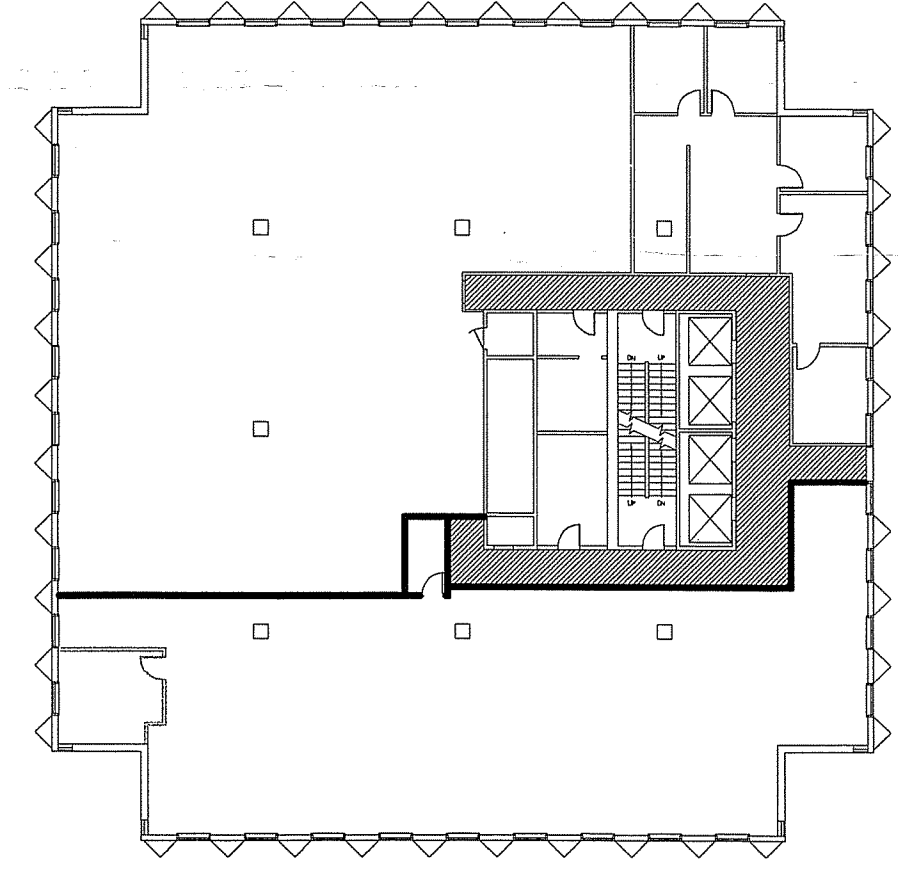
#	DATE	DESCRIPTION

DATE:	06-26-12
PROJECT #:	020612.04
DRAWN BY:	DLP
CHECKED BY:	MET
DRAWING SCALE:	AS NOTED

SHEET TITLE

ENLARGED PARTIAL
REFLECTED CEILING
PLAN
SECOND FLOOR
KEY PLAN

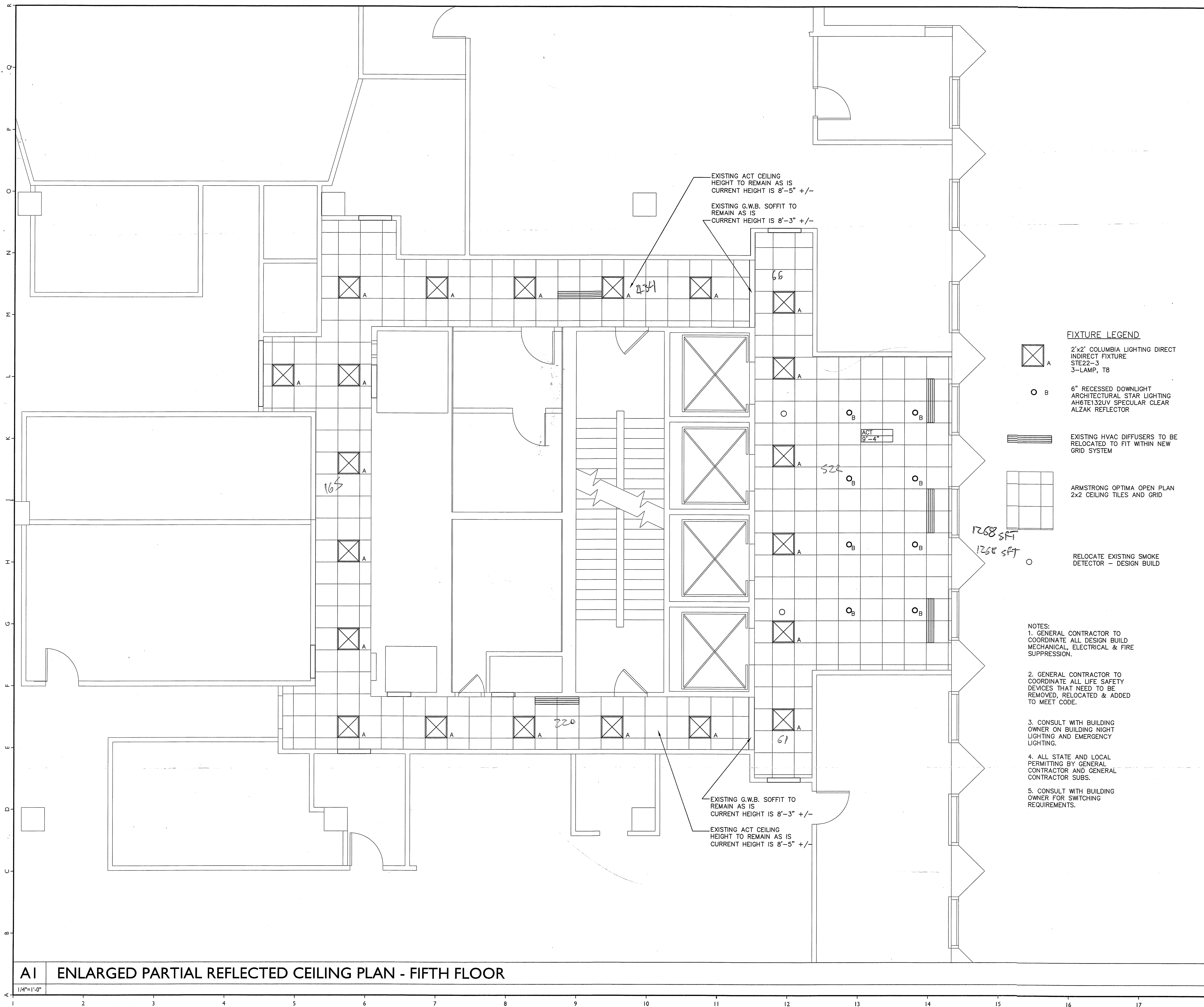
A300





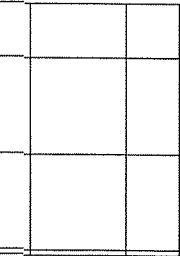

A1 ENLARGED PARTIAL REFLECTED CEILING PLAN - SECOND FLOOR

A18 KEY PLAN

© COPYRIGHT 1985-2008
REPRODUCTION OR USE OF THIS
DOCUMENT WITHOUT WRITTEN
PERMISSION OF GAWRON TURGEON
ARCHITECTS IS PROHIBITED

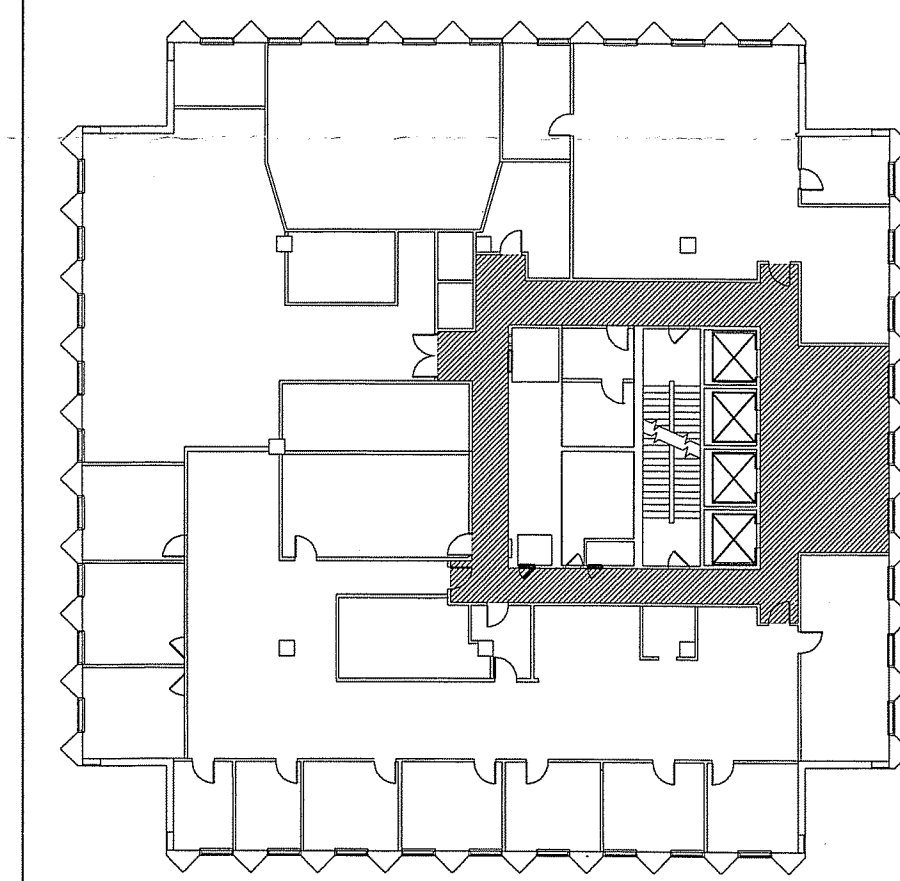


FIXTURE LEGEND

-  **A** 2'x2' COLUMBIA LIGHTING DIRECT INDIRECT FIXTURE STE22-3 3-LAMP, TB
- 6" RECESSED DOWNLIGHT ARCHITECTURAL STAR LIGHTING AH6TE132UV SPECULAR CLEAR ALZAK REFLECTOR
-  EXISTING HVAC DIFFUSERS TO BE RELOCATED TO FIT WITHIN NEW GRID SYSTEM
-  ARMSTRONG OPTIMA OPEN PLAN 2x2 CEILING TILES AND GRID
-  RELOCATE EXISTING SMOKE DETECTOR - DESIGN BUILD

NOTES:

1. GENERAL CONTRACTOR TO COORDINATE ALL DESIGN BUILD MECHANICAL, ELECTRICAL & FIRE SUPPRESSION.
2. GENERAL CONTRACTOR TO COORDINATE ALL LIFE SAFETY DEVICES THAT NEED TO BE REMOVED, RELOCATED & ADDED TO MEET CODE.
3. CONSULT WITH BUILDING OWNER ON BUILDING NIGHT LIGHTING AND EMERGENCY LIGHTING.
4. ALL STATE AND LOCAL PERMITTING BY GENERAL CONTRACTOR AND GENERAL CONTRACTOR SUBS.
5. CONSULT WITH BUILDING OWNER FOR SWITCHING REQUIREMENTS.



REVISIONS		
#	DATE	DESCRIPTION

DATE:	06-26-12
PROJECT #:	020612.04
DRAWN BY:	DLP
CHECKED BY:	MET
DRAWING SCALE:	AS NOTED

SHEET TITLE
 ENLARGED PARTIAL REFLECTED CEILING PLAN
 FIFTH FLOOR
 KEY PLAN

A301

A1 ENLARGED PARTIAL REFLECTED CEILING PLAN - FIFTH FLOOR

A18 KEY PLAN

