

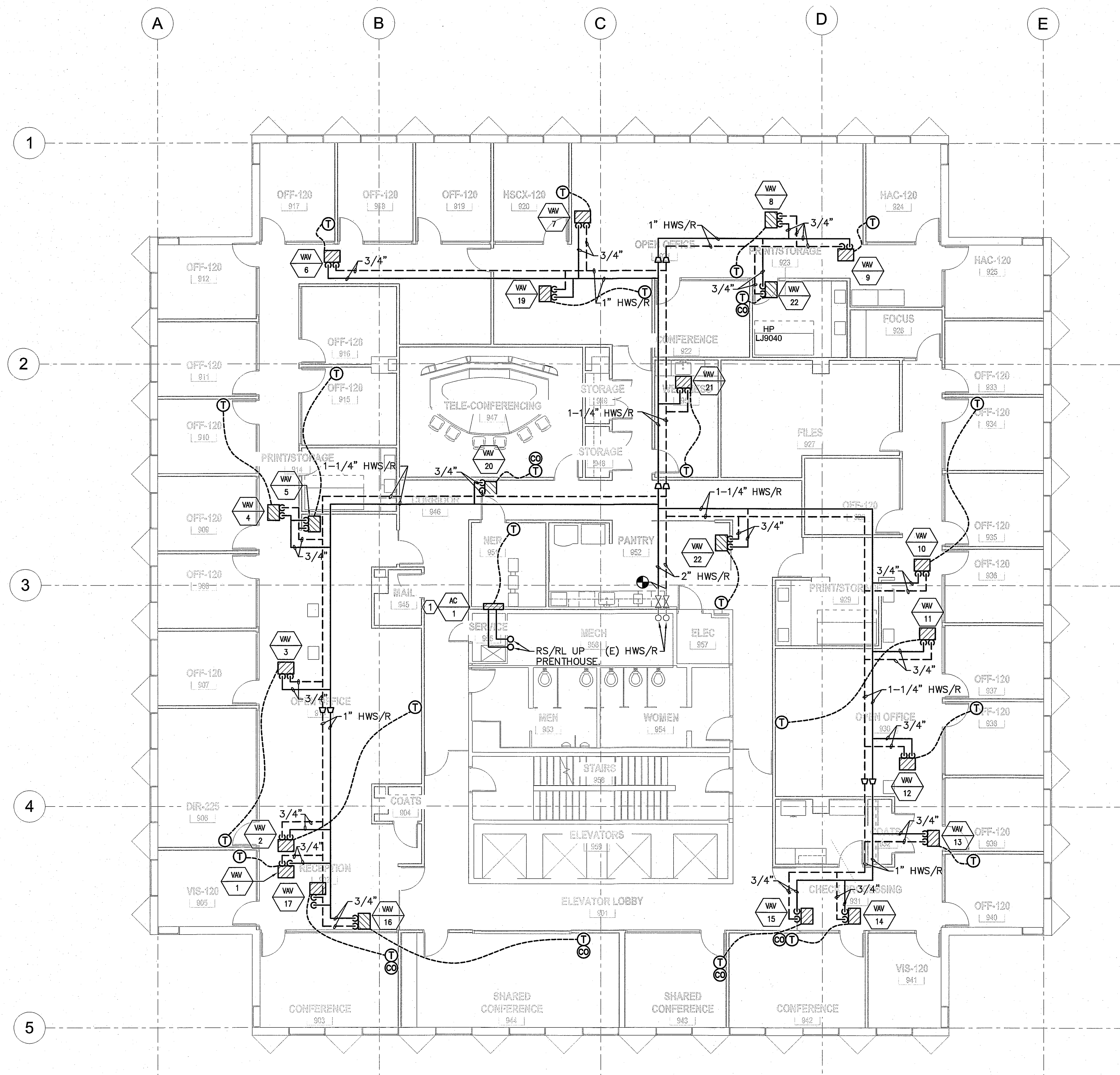
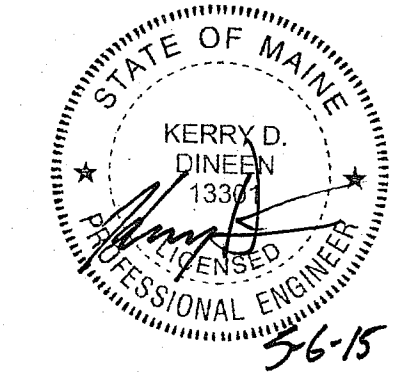
NOTES:

1. SEE SHEET M-001 FOR LEGEND AND ABBREVIATIONS.

KEYED NOTES:

① ROUTE 3/4" CONDENSATE DRAIN TO WITHIN 2" OF MOP SINK FLOOD RIM. TERMINATE AT DOWN TURNED ELBOW.

SMRT	ARCHITECTURE	144 Fore Street/P.O. Box 618
	ENGINEERING	Portland, Maine 04104
	PLANNING	tel. (207) 772-3846
	INTERIOR DESIGN	fax. (207) 772-1070
	COMMISSIONING	www.smrtinc.com
		SMRT PROJECT #15035



① **NINTH FLOOR PLAN**
 NOT TO SCALE

REVISIONS

BANK OF AMERICA - 9TH & 10TH FLOORS

BANK OF AMERICA
 1 MONUMENT SQUARE
 Portland, ME

TITLE
 NINTH FLOOR HVAC PIPING PLAN

DATE	JOB NO.
May 11, 2015	15051.00

DRAWING NO. **MPI01**

ISSUED FOR CONSTRUCTION

