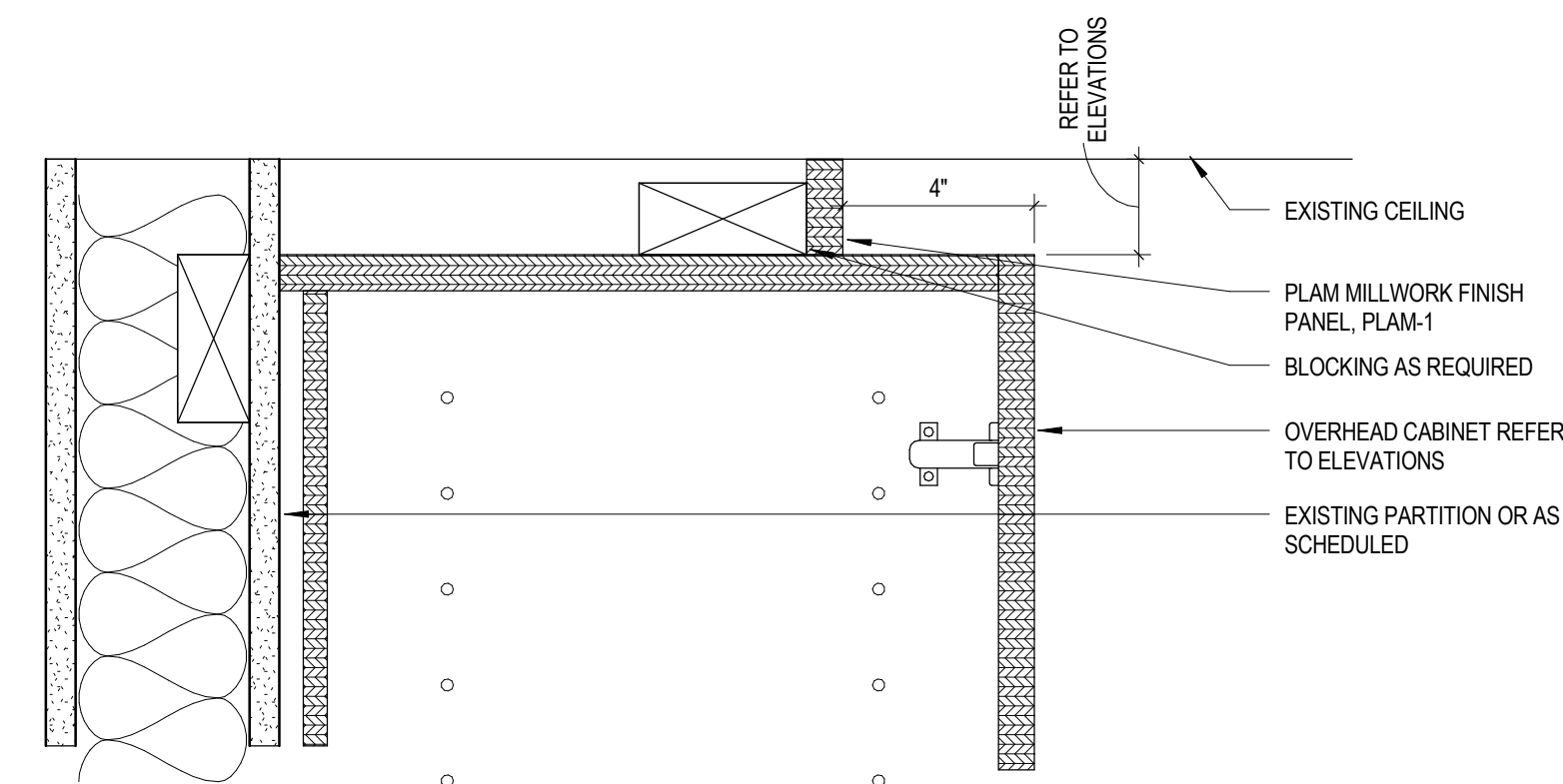
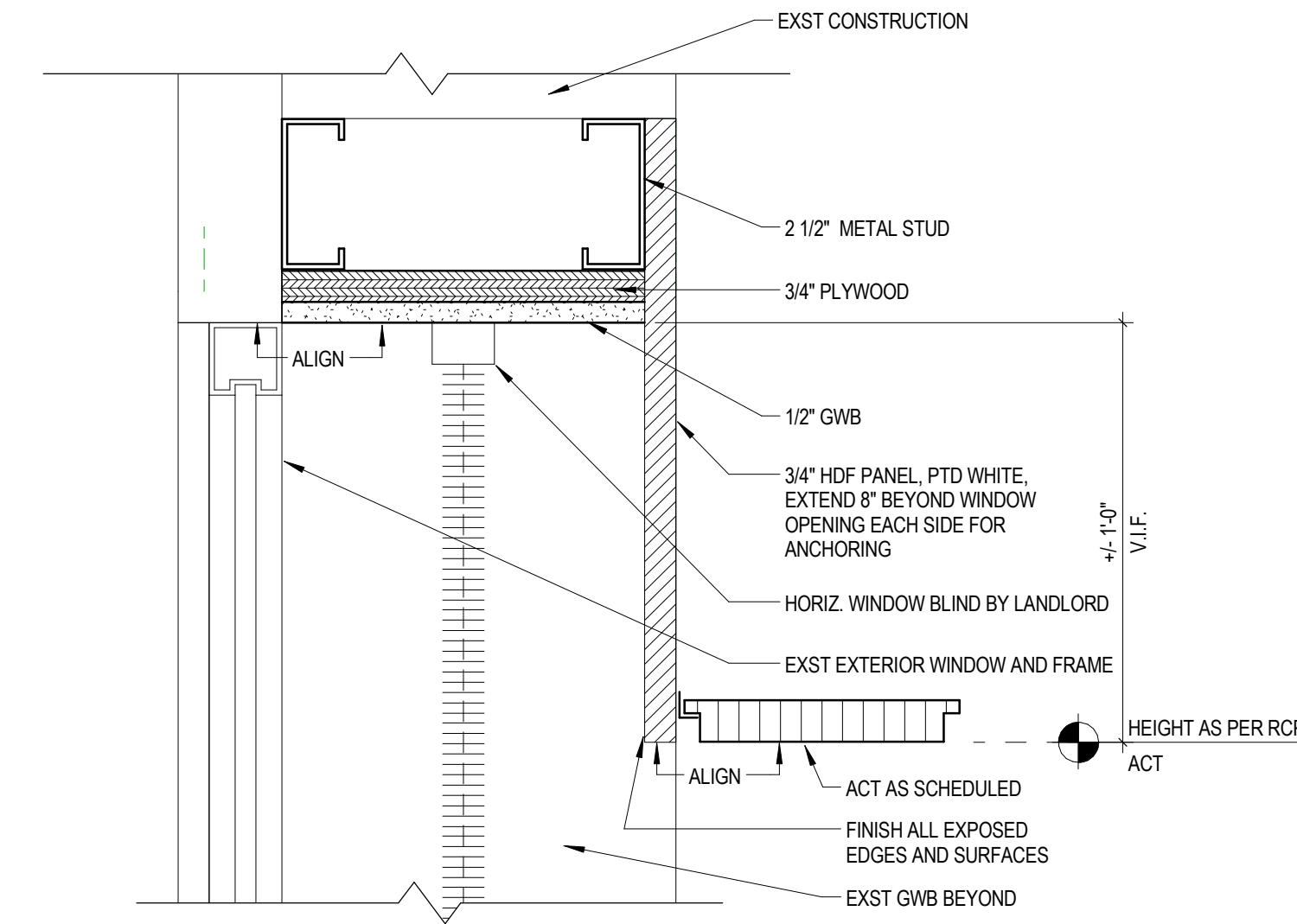




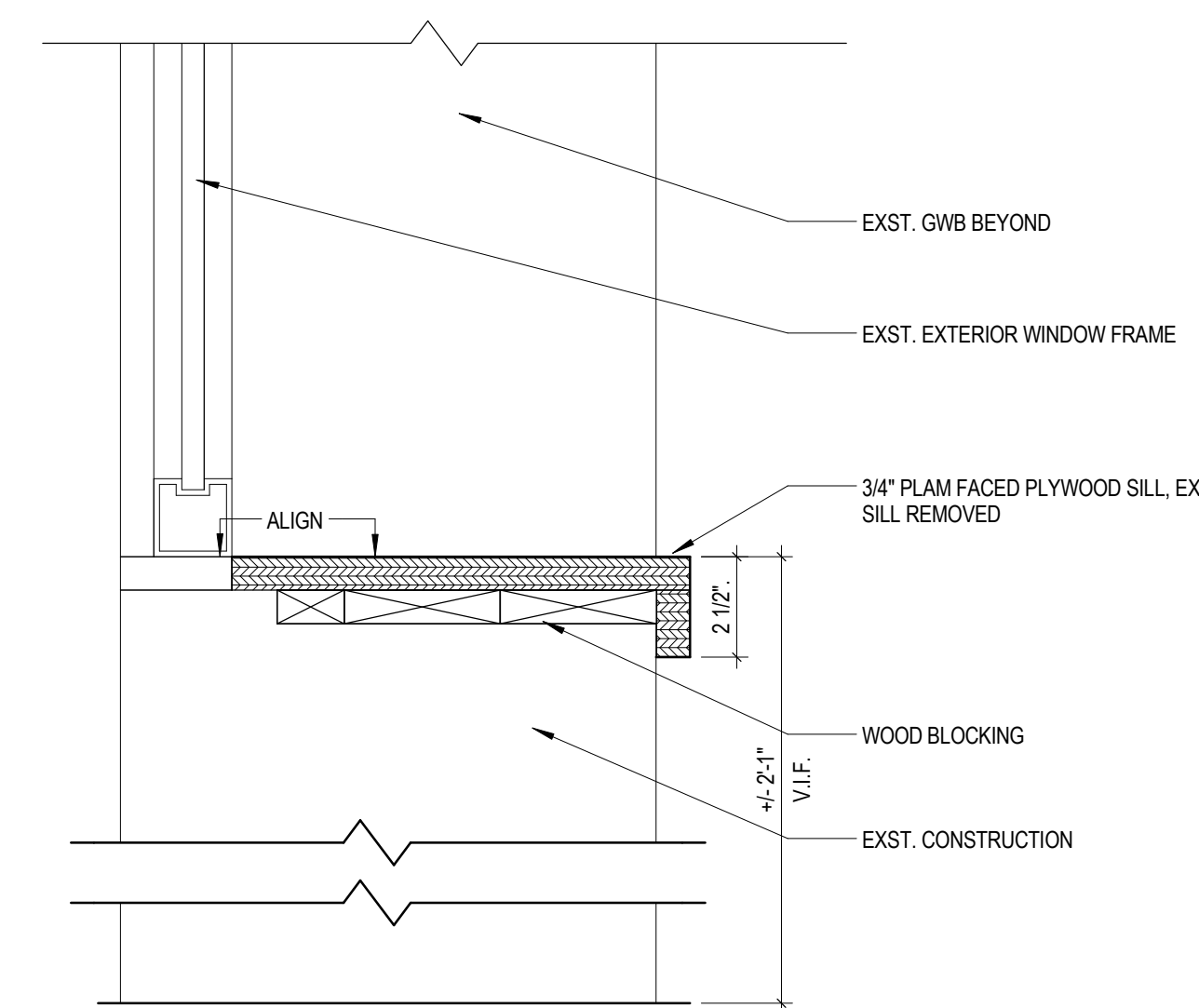
Brent D. Zeigler



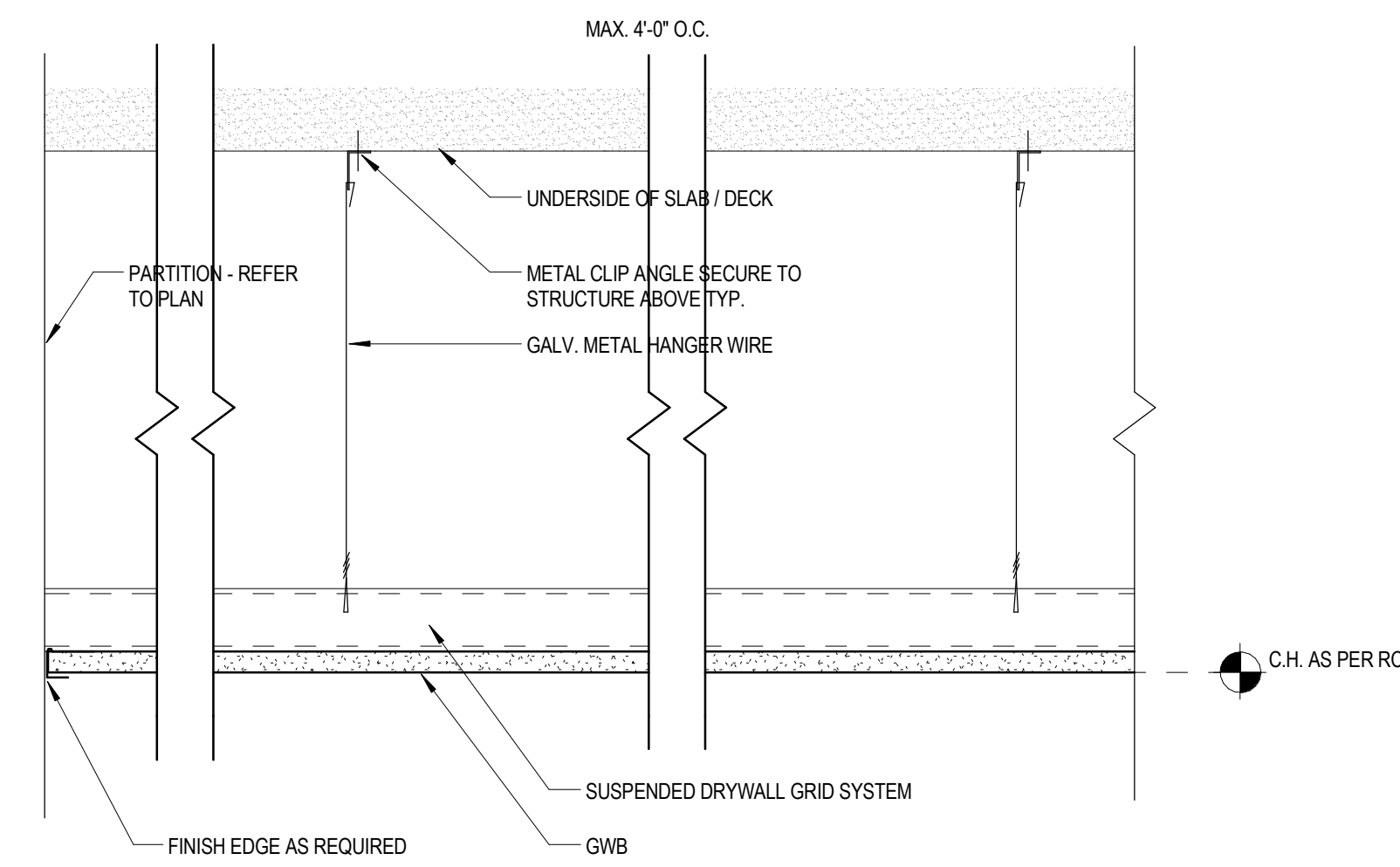
6 CABINET SOFFIT
3" = 1'-0"



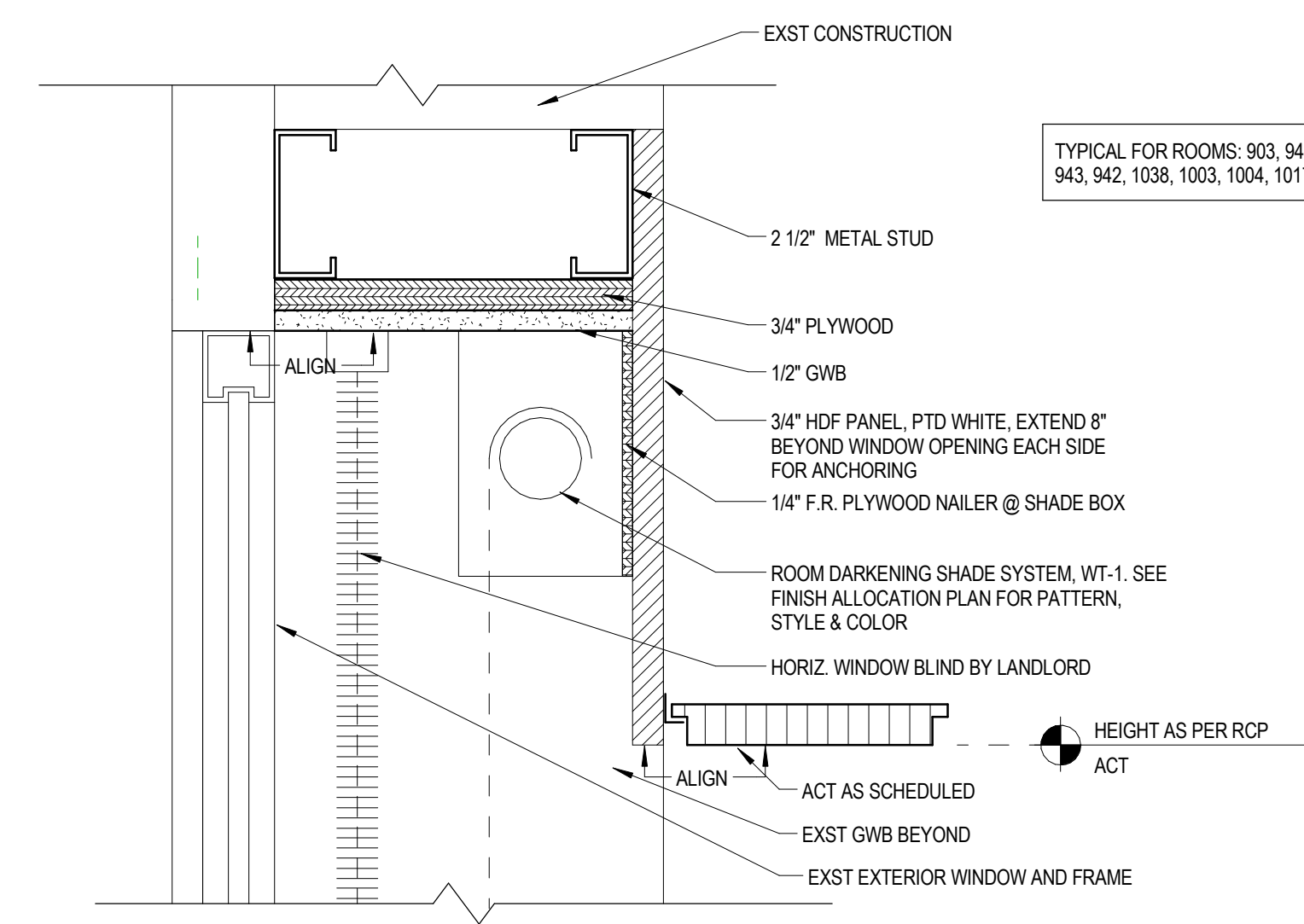
3 TYP. WINDOW HEAD DETAIL
3" = 1'-0"



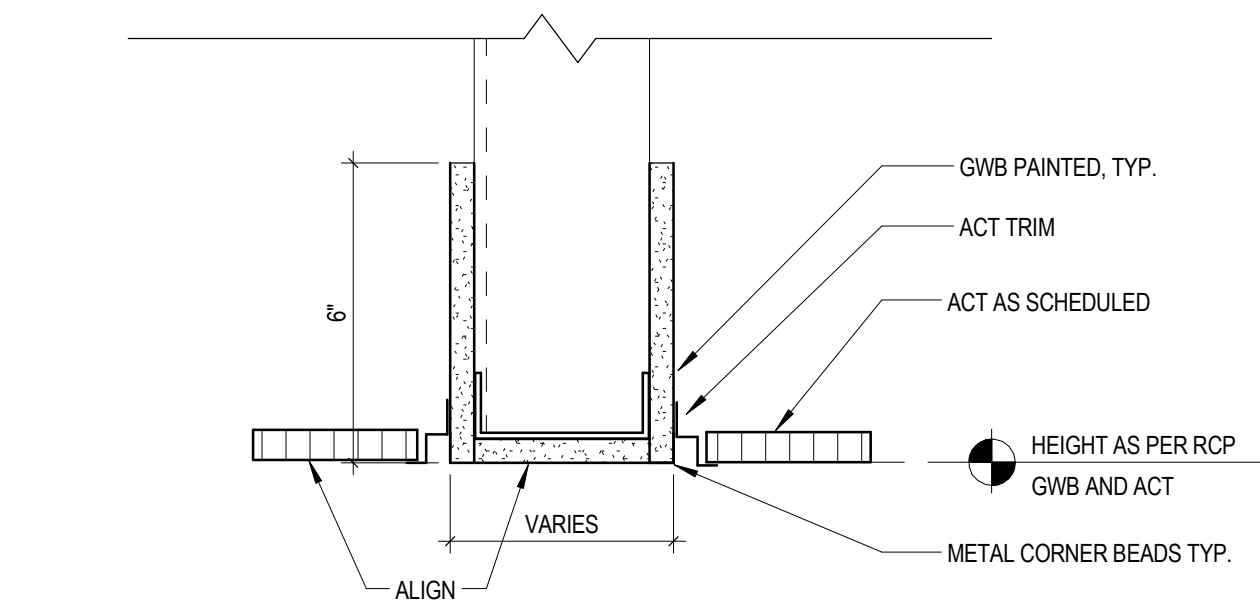
5 TYP. WINDOW SILL DETAIL
3" = 1'-0"



2 TYP. DETAIL AT GWB HUNG CEILING
3" = 1'-0"



4 TYP. WINDOW HEAD DETAIL AT CONFERENCE ROOMS
3" = 1'-0"



1 TYP. DRYWALL SOFFIT
3" = 1'-0"

REVISIONS

BANK OF AMERICA - 9TH & 10TH FLOORS

BANK OF AMERICA
1 MONUMENT SQUARE
Portland, ME

TITLE
CEILING DETAILS

DATE JOB NO.
May 11, 2015 15051.00

DRAWING NO. **A8.03**

ISSUED FOR CONSTRUCTION